

Converting Colors

XYZ(25.9243, 25.1615, 18.8781)

Have a look what the booklet for
XYZ(25.9243, 25.1615, 18.8781)
contains.

XYZ(25.9412, 25.0838, 18.8036)	3
<i>Conversions</i>	4
<i>Details</i>	6
<i>Harmonies</i>	12
<i>Previews</i>	24
<i>Color Blindness Simulation</i>	28
<i>CSS Examples</i>	31

Color

**XYZ(25.9412, 25.0838,
18.8036)**

Conversions

Conversions Part 1

Format	Color
Hex	A28370
RGB	162, 131, 112
RGB Percent	64%, 51%, 44%
CMY	0.3647, 0.4863, 0.5608
CMYK	0.00, 0.19, 0.31, 0.36
HSL	23°, 21%, 54%
HSV	23°, 31%, 64%
XYZ	25.9412, 25.0838, 18.8036
YIQ	138.1030, 24.5750, 0.6630

Conversions

Conversions Part 2

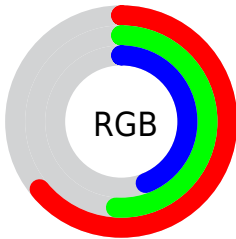
Format	Color
R _Y B	162, 143, 112
Decimal	10650480
CIE Lab	57.16, 9.00, 14.76
CIE LCh	57, 17.284, 58.627
Yxy	25.0838, 0.3715, 0.3592
Android (android.graphics.Color)	4288840560 (0xFFA28370)
YUV	138.1030, -12.8688, 20.9577
Hunter-Lab	50.0837, 4.8087, 12.7986

Details

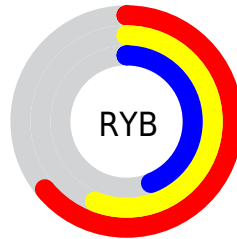
The XYZ color **25.9412, 25.0838, 18.8036** is a dark color, and the websafe version is hex **996666**. A complement of this color would be **23.0258, 25.6975, 37.9290**, and the grayscale version is **24.2383, 25.5006, 27.7701**.

A 20% lighter version of the original color is **52.7548, 51.8667, 42.3528**, and **10.2494, 9.6560, 6.1741** is the 20% darker color. If you saturate the color by 10%, you get **23.8351, 22.1876, 14.0447**, and if you desaturate by 10%, it is **28.3417, 28.3088, 24.4619**.

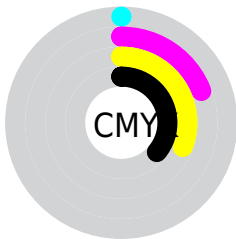
Distribution



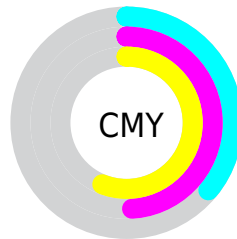
- Red (64%)
- Green (51%)
- Blue (44%)



- Red (64%)
- Yellow (56%)
- Blue (44%)



- Cyan (0%)
- Magenta (19%)
- Yellow (31%)
- Black (36%)



- Cyan (36%)
- Magenta (49%)
- Yellow (56%)

Brightness & Saturation Gradients

These gradients show how the XYZ color 25.9412, 25.0838, 18.8036 changes by changing the brightness by 10 percent. The first figure shows a shift by +10% for each color and the second figure -10%.

Similar to the brightness gradients but the following saturation gradients show a change of the XYZ color 25.9412, 25.0838, 18.8036 by changing the saturation by 10% instead.

■ 25.9412, 25.0838,
18.8036

■ 25.9412, 25.0838,
18.8036

274.7553,
278.2550, 257.7489

■ 16.9121, 16.1395,
11.3531

■ 52.6120, 51.7931,
42.2342

■ 10.2668, 9.6229,
6.1877

■ 70.9845, 70.3270,
59.0514

■ 5.6398, 5.1497,
2.8889

■ 93.2022, 92.8261,
79.8279

■ 2.6659, 2.3353,
1.0382

■ 119.6303,
119.6749, 104.9823

■ 0.9796, 0.7923,
0.0000

150.6344,
151.2578, 134.9330

■ 0.0000, 0.0000,
0.0000

186.5796,

187.9592, 170.0986

227.8315,
230.1635, 210.8977

■ 25.9412, 25.0838,
18.8036

■ 25.9412, 25.0838,
18.8036

■ 23.8351, 22.1876,
14.0447

■ 28.3417, 28.3088,
24.4619

■ 22.0091, 19.6057,
10.1366

■ 31.0462, 31.8695,
31.0616

■ 20.4504, 17.3280,
7.0284

■ 34.0663, 35.7767,
38.6441

■ 19.1443, 15.3418,
4.6629

■ 37.4124, 40.0400,
47.2477

■ 18.0745, 13.6340,
2.9754

■ 41.0944, 44.6684,
56.9086

■ 17.2223, 12.1896,
1.8897

■ 45.1218, 49.6706,
67.6614

■ 16.5997, 11.0802,
1.2638

■ 49.5034, 55.0549,
79.5389

■ 54.2481, 60.8296,
92.5727

■ 58.9099, 66.8206,
104.4005

Harmonies

Analogous

The Analogous color harmony consists of three colors that are next to each other on the color wheel.



27.4508, 25.0838, 22.2782



25.9412, 25.0838, 18.8036



23.9355, 25.0838, 17.5549

Triad

The Triadic color harmony groups three colors that are evenly spaced from another and form a triangle on the color wheel.



25.9412, 25.0838, 18.8036



20.1330, 25.0838, 27.0438



25.7694, 25.0838, 38.4002

Complementary

The Complementary color scheme is a pair of colors which are on the opposite of each other on the color wheel.



25.9412, 25.0838, 18.8036



23.0258, 25.6975, 37.9290

Split Complementary

Split-complementary colors differ from the complementary color scheme. The scheme consists of three colors, the original color and two neighbors of the complement color.



23.7476, 25.0838, 40.1444



25.9412, 25.0838, 18.8036



20.5631, 25.0838, 33.0521

Square

The Square scheme is like the rectangle color scheme, but the four colors are evenly spaced on the color wheel.



25.9412, 25.0838, 18.8036



20.6484, 25.0838, 21.8738



21.8581, 25.0838, 38.0635



27.3477, 25.0838, 33.5842

Rectangle

The Rectangle color scheme consists of four colors that form a rectangle on the color wheel.



25.9412, 25.0838, 18.8036



22.6110, 25.0838, 17.9941



21.8581, 25.0838, 38.0635



25.1156, 25.0838, 39.3930

Sweetspot

The Sweet Spot groups the original color and five complimentary colors.



25.9419, 25.0850, 18.8041



57.2493, 59.0126, 58.5925



25.7032, 21.2734, 29.0038



12.6932, 13.0394, 12.7505



78.6606, 82.7571, 90.1225



14.0027, 14.7319, 16.0430

Same Dimension

The Same Dimension uses a secret algorithm to generate beautiful new colors.



25.9419, 25.0850, 18.8041



44.4232, 41.8789, 28.0555



29.6020, 32.4052, 20.0241



7.2841, 7.5066, 7.4451



13.1166, 8.8071, 1.0086



0.3203, 0.2744, 0.0361

Inverse Universe

The Inverse Universe completely reimagines the original color for something new.



23.0258, 25.6975, 37.9290



38.2709, 43.1595, 68.3697



19.7611, 19.1681, 36.8408



7.0489, 7.5567, 8.9902



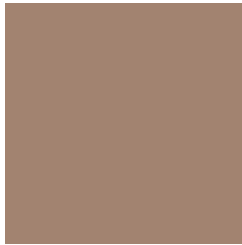
8.8031, 9.3856, 28.2774



0.2284, 0.2840, 0.6086

Previews

White Background



This preview shows how the XYZ color 25.9412, 25.0838, 18.8036 looks on a white background.

Color Contrast Check

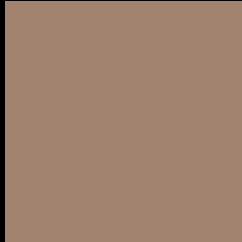
Large Text (above 18pt) WCAG AA ✓ Pass

Any Text WCAG AA × Fail

Large Text (above 18pt) WCAG AAA × Fail

Any Text WCAG AAA × Fail

Black Background



This preview shows how the XYZ color 25.9412, 25.0838, 18.8036 looks on a black background.

Color Contrast Check

Large Text (above 18pt) WCAG AA ✓ Pass

Any Text WCAG AA ✓ Pass

Large Text (above 18pt) WCAG AAA ✓ Pass

Any Text WCAG AAA × Fail

If you want to check with other color combinations, try the [Color Contrast Checker](#).

XYZ 25.9412, 25.0838, 18.8036

Background



This preview shows how black text looks on a background with the XYZ color 25.9412, 25.0838, 18.8036.



This preview shows how white text looks on a background with the XYZ color 25.9412, 25.0838,

Color Blindness Simulation

Color vision deficiency is a very complex topic, and I could not describe the different causes any better than Wikipedia does, so if you want to learn more, you should check out their [article about color blindness](#).

Dichromacy



Original Color

25.9412, 25.0838, 18.8036

Protanopia

23.7172, 25.1489, 19.8238

Deuteranopia

25.4740, 25.0433, 18.8205



Tritanopia

27.6218, 24.9842, 27.0335

Trichromacy



Original Color

25.9412, 25.0838, 18.8036

Protanomaly

24.4637, 25.1222, 19.4793

Deuteranomaly

25.6731, 25.1460, 18.8298

Tritanomaly

26.9253, 24.8894, 23.8071

Monochromacy



Original Color

25.9412, 25.0838, 18.8036

Achromatopsia

24.1572, 25.4152, 27.6772

Achromatomaly

24.6590, 25.1160, 24.3171

CSS Examples

Text

The CSS property to change the color of the text to XYZ 25.9412, 25.0838, 18.8036 is called "color". The color property can be set on classes, ids or directly on the HTML element.

This example shows how text in the color `rgb(162, 131, 112)` looks like.

```
.text, #text, p{  
    color:rgb(162, 131, 112)  
}
```

If you want to add a text shadow in that color use the text-shadow property, you can generate a text shadow directly with our [CSS Text Shadow Generator](#).

Here you see how black text with a 4 pixel rgb(162, 131, 112) colored shadow looks like.

```
.shadow{ text-shadow: 4px 4px 2px rgb(162, 131, 112) }
```

Border

The CSS property to change the border of an element to XYZ 25.9412, 25.0838, 18.8036 is called "border". The border property can be set on classes, ids or directly on the HTML element.

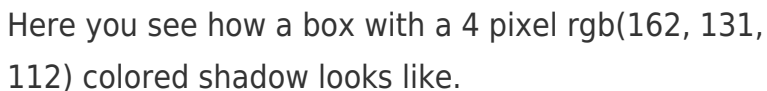
This example shows the color as border, it can be applied via the CSS property "border" or "border-color".

```
.border, #border, table{ border:4px solid rgb(162, 131, 112) }
```


If only the border color should be changed use the property `border-color`.

```
.border{ border-color:rgb(162, 131, 112) }
```

If you want to add a box shadow in that color use:



Here you see how a box with a 4 pixel `rgb(162, 131, 112)` colored shadow looks like.

```
.boxshadow{ -moz-box-shadow:4px 4px 4px 4px rgb(162, 131, 112); -webkit-box-shadow:4px 4px 4px 4px rgb(162, 131, 112); box-shadow:4px 4px 4px 4px rgb(162, 131, 112) }
```

Background

The CSS property to change the background color of an element to XYZ 25.9412, 25.0838, 18.8036 is called "background". The background property can be set on classes, ids or directly on the HTML element.

```
.background, #background, body{  
background: rgb(162, 131, 112) }
```

If only the background color should be changed can be used:

```
.background{ background-color: rgb(162,  
131, 112) }
```

This example shows the color as background, it is applied via the CSS property "background".

To optimize and compress your CSS code, you can use our [online CSS compressor and optimizer](#) based on csstidy. If you want to create a linear or radial gradient as background or border, check our [CSS Gradient Generator](#).

Hey! You found this booklet interesting? Support Converting Colors with the new Membership Option!

The pro membership hides all ads, plus gives you double the colors in the color bucket, and more awesome pro features!

[Learn more, Memberships starting at \\$2.50/m!](#)

**Follow me
on Twitter!**

@ConvertingColor