

Converting Colors

XYZ(26.0661, 25.5444, 19.1795)

Have a look what the booklet for
XYZ(26.0661, 25.5444, 19.1795)
contains.

XYZ(26.0661, 25.5444, 19.1795)	3
<i>Conversions</i>	4
<i>Details</i>	6
<i>Harmonies</i>	12
<i>Previews</i>	24
<i>Color Blindness Simulation</i>	28
<i>CSS Examples</i>	31

Color

**XYZ(26.0661, 25.5444,
19.1795)**

Conversions

Conversions Part 1

Format	Color
Hex	A18571
RGB	161, 133, 113
RGB Percent	63%, 52%, 44%
CMY	0.3686, 0.4784, 0.5569
CMYK	0.00, 0.17, 0.30, 0.37
HSL	25°, 20%, 54%
HSV	25°, 30%, 63%
XYZ	26.0661, 25.5444, 19.1795
YIQ	139.0920, 23.1080, -0.2840

Conversions

Conversions Part 2

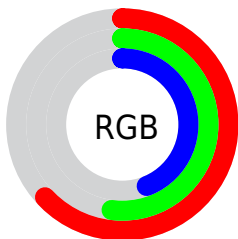
Format	Color
R_{YB}	161, 147, 113
Decimal	10585457
CIE _{Lab}	57.60, 7.60, 14.79
CIE _{LCh}	58, 16.626, 62.800
Yxy	25.5444, 0.3682, 0.3608
Android (android.graphics.Color)	4288775537 (0xFFA18571)
YUV	139.0920, -12.8634, 19.2133
Hunter-Lab	50.5415, 3.6115, 12.8796

Details

The XYZ color **26.0661, 25.5444, 19.1795** is a dark color, and the websafe version is hex **996666**. A complement of this color would be **22.7676, 25.1328, 37.3694**, and the grayscale version is **24.6184, 25.9004, 28.2056**.

A 20% lighter version of the original color is **52.6693, 52.4334, 42.9420**, and **10.4311, 9.9735, 6.3763** is the 20% darker color. If you saturate the color by 10%, you get **24.0104, 22.7570, 14.4121**, and if you desaturate by 10%, it is **28.3990, 28.6284, 24.8332**.

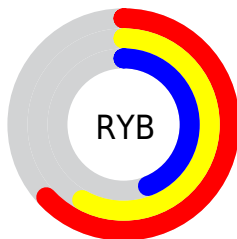
Distribution



Red (63%)

Green (52%)

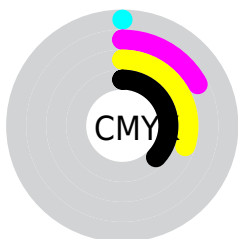
Blue (44%)



Red (63%)

Yellow (58%)

Blue (44%)

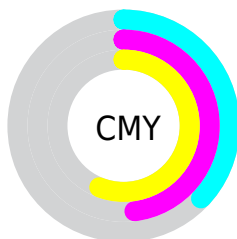


Cyan (0%)

Magenta (17%)

Yellow (30%)

Black (37%)



Cyan (37%)

Magenta (48%)

Yellow (56%)

Brightness & Saturation Gradients

These gradients show how the XYZ color 26.0661, 25.5444, 19.1795 changes by changing the brightness by 10 percent. The first figure shows a shift by +10% for each color and the second figure -10%.

Similar to the brightness gradients but the following saturation gradients show a change of the XYZ color 26.0661, 25.5444, 19.1795 by changing the saturation by 10% instead.

■ 26.0661, 25.5444,
19.1795

■ 26.0661, 25.5444,
19.1795

275.3572,
280.5383, 259.8936

■ 17.0060, 16.4831,
11.6219

■ 52.8121, 52.5390,
42.8779

■ 10.3341, 9.8667,
6.3674

■ 71.2288, 71.2412,
59.8559

■ 5.6850, 5.3106,
2.9974

■ 93.4950, 93.9257,
80.8110

■ 2.6933, 2.4307,
1.0933

■ 119.9761,
120.9771, 106.1619

■ 0.9937, 0.8416,
0.0000

151.0376,
152.7796, 136.3270

■ 0.0000, 0.0000,
0.0000

187.0447,

189.7177, 171.7250

228.3627,
232.1758, 212.7743

■ 26.0661, 25.5444,
19.1795

■ 26.0661, 25.5444,
19.1795

■ 24.0104, 22.7570,
14.4121

■ 28.3990, 28.6284,
24.8332

■ 22.2182, 20.2533,
10.4838

■ 31.0177, 32.0144,
31.4140

■ 20.6780, 18.0244,
7.3450

■ 33.9332, 35.7121,
38.9623

■ 19.3761, 16.0598,
4.9404

■ 37.1549, 39.7296,
47.5152

■ 18.2975, 14.3480,
3.2075

■ 40.6921, 44.0747,
57.1082

■ 17.4248, 12.8762,
2.0730

■ 44.5535, 48.7550,
67.7750

■ 16.7229, 11.6243,
1.3710

■ 48.7475, 53.7778,
79.5476

■ 16.7108, 11.6027,
1.3588

■ 53.2822, 59.1501,
92.4567

■ 57.6947, 64.6905,
104.0534

Harmonies

Analogous

The Analogous color harmony consists of three colors that are next to each other on the color wheel.



27.6311, 25.5444, 22.3020



26.0661, 25.5444, 19.1795



24.0932, 25.5444, 18.2612

Triad

The Triadic color harmony groups three colors that are evenly spaced from another and form a triangle on the color wheel.



26.0661, 25.5444, 19.1795



20.6627, 25.5444, 28.3510



26.4062, 25.5444, 38.0516

Complementary

The Complementary color scheme is a pair of colors which are on the opposite of each other on the color wheel.



26.0661, 25.5444, 19.1795



22.7676, 25.1328, 37.3694

Split Complementary

Split-complementary colors differ from the complementary color scheme. The scheme consists of three colors, the original color and two neighbors of the complement color.



24.4661, 25.5444, 40.2235



26.0661, 25.5444, 19.1795



21.2099, 25.5444, 34.1656

Square

The Square scheme is like the rectangle color scheme, but the four colors are evenly spaced on the color wheel.



26.0661, 25.5444, 19.1795



21.0400, 25.5444, 23.1098



22.5759, 25.5444, 38.7135



27.8349, 25.5444, 33.1157

Rectangle

The Rectangle color scheme consists of four colors that form a rectangle on the color wheel.



26.0661, 25.5444, 19.1795



22.8298, 25.5444, 18.9040



22.5759, 25.5444, 38.7135



25.7886, 25.5444, 39.1573

Sweetspot

The Sweet Spot groups the original color and five complimentary colors.



26.0668, 25.5456, 19.1800



55.8702, 57.7446, 57.0775



25.4110, 21.3107, 27.9736



12.1039, 12.4731, 12.1370



76.7382, 80.7346, 87.9200



13.3056, 13.9985, 15.2444

Same Dimension

The Same Dimension uses a secret algorithm to generate beautiful new colors.



26.0668, 25.5456, 19.1800



44.1039, 42.2668, 28.3237



29.7357, 32.8834, 20.4030



7.3050, 7.5483, 7.4520



13.3849, 9.3437, 1.0981



0.3274, 0.2886, 0.0385

Inverse Universe

The Inverse Universe completely reimagines the original color for something new.



22.7676, 25.1328, 37.3694



37.1911, 41.3955, 66.4165



19.6046, 18.8068, 36.3151



7.0275, 7.5140, 8.9830



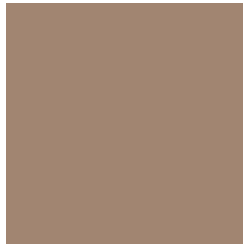
8.3688, 8.5170, 28.1326



0.2210, 0.2692, 0.6062

Previews

White Background



This preview shows how the XYZ color 26.0661, 25.5444, 19.1795 looks on a white background.

Color Contrast Check

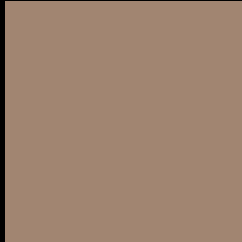
Large Text (above 18pt) WCAG AA ✓ Pass

Any Text WCAG AA × Fail

Large Text (above 18pt) WCAG AAA × Fail

Any Text WCAG AAA × Fail

Black Background



This preview shows how the XYZ color 26.0661, 25.5444, 19.1795 looks on a black background.

Color Contrast Check

Large Text (above 18pt) WCAG AA ✓ Pass

Any Text WCAG AA ✓ Pass

Large Text (above 18pt) WCAG AAA ✓ Pass

Any Text WCAG AAA × Fail

If you want to check with other color combinations, try the [Color Contrast Checker](#).

XYZ 26.0661, 25.5444, 19.1795

Background



This preview shows how black text looks on a background with the XYZ color 26.0661, 25.5444, 19.1795.



This preview shows how white text looks on a background with the XYZ color 26.0661, 25.5444,

Color Blindness Simulation

Color vision deficiency is a very complex topic, and I could not describe the different causes any better than Wikipedia does, so if you want to learn more, you should check out their [article about color blindness](#).

Dichromacy



Original Color

26.0661, 25.5444, 19.1795

Protanopia

24.0949, 25.5489, 20.1845

Deuteranopia

26.0661, 25.5444, 19.1795



Tritanopia

27.8203, 25.4571, 27.8735

Trichromacy



Original Color

26.0661, 25.5444, 19.1795

Protanomaly

24.6612, 25.4254, 19.8275

Deuteranomaly

26.0661, 25.5444, 19.1795

Tritanomaly

27.1162, 25.3635, 24.5856

Monochromacy



Original Color

26.0661, 25.5444, 19.1795

Achromatopsia

24.5403, 25.8183, 28.1161

Achromatomaly

25.0075, 25.7061, 24.7628

CSS Examples

Text

The CSS property to change the color of the text to XYZ 26.0661, 25.5444, 19.1795 is called "color". The color property can be set on classes, ids or directly on the HTML element.

This example shows how text in the color `rgb(161, 133, 113)` looks like.

```
.text, #text, p{  
    color:rgb(161, 133, 113)  
}
```

If you want to add a text shadow in that color use the text-shadow property, you can generate a text shadow directly with our [CSS Text Shadow Generator](#).

Here you see how black text with a 4 pixel rgb(161, 133, 113) colored shadow looks like.

```
.shadow{ text-shadow: 4px 4px 2px rgb(161, 133, 113) }
```

Border

The CSS property to change the border of an element to XYZ 26.0661, 25.5444, 19.1795 is called "border". The border property can be set on classes, ids or directly on the HTML element.

This example shows the color as border, it can be applied via the CSS property "border" or "border-color".

```
.border, #border, table{ border:4px solid rgb(161, 133, 113) }
```


If only the border color should be changed use the property `border-color`.

```
.border{ border-color:rgb(161, 133, 113) }
```

If you want to add a box shadow in that color use:

Here you see how a box with a 4 pixel `rgb(161, 133, 113)` colored shadow looks like.

```
.boxshadow{ -moz-box-shadow:4px 4px 4px 4px rgb(161, 133, 113); -webkit-box-shadow:4px 4px 4px 4px rgb(161, 133, 113); box-shadow:4px 4px 4px 4px rgb(161, 133, 113) }
```

Background

The CSS property to change the background color of an element to XYZ 26.0661, 25.5444, 19.1795 is called "background". The background property can be set on classes, ids or directly on the HTML element.

```
.background, #background, body{  
background: rgb(161, 133, 113) }
```

If only the background color should be changed can be used:

```
.background{ background-color: rgb(161,  
133, 113) }
```

This example shows the color as background, it is applied via the CSS property "background".

To optimize and compress your CSS code, you can use our [online CSS compressor and optimizer](#) based on csstidy. If you want to create a linear or radial gradient as background or border, check our [CSS Gradient Generator](#).

Hey! You found this booklet interesting? Support Converting Colors with the new Membership Option!

The pro membership hides all ads, plus gives you double the colors in the color bucket, and more awesome pro features!

[Learn more, Memberships starting at \\$2.50/m!](#)

**Follow me
on Twitter!**

@ConvertingColor