

Converting Colors

XYZ(26.2657, 24.4990, 10.7260)

Have a look what the booklet for
XYZ(26.2657, 24.4990, 10.7260)
contains.

XYZ(26.3277, 24.4849, 10.7356)	3
<i>Conversions</i>	4
<i>Details</i>	6
<i>Harmonies</i>	12
<i>Previews</i>	24
<i>Color Blindness Simulation</i>	28
<i>CSS Examples</i>	31

Color

**XYZ(26.3277, 24.4849,
10.7356)**

Conversions

Conversions Part 1

Format	Color
Hex	AE7E4F
RGB	174, 126, 79
RGB Percent	68%, 49%, 31%
CMY	0.3176, 0.5059, 0.6902
CMYK	0.00, 0.28, 0.55, 0.32
HSL	30°, 38%, 50%
HSV	30°, 55%, 68%
XYZ	26.3277, 24.4849, 10.7356
YIQ	134.9940, 43.6950, -4.4410

Conversions

Conversions Part 2

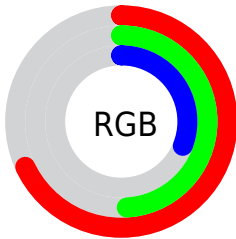
Format	Color
RYB	174, 172, 79
Decimal	11435599
CIELab	56.57, 13.13, 32.73
CIELCh	57, 35.261, 68.137
Yxy	24.4849, 0.4278, 0.3978
Android (android.graphics.Color)	4289625679 (0xFFAE7E4F)
YUV	134.9940, -27.6050, 34.2083
Hunter-Lab	49.4822, 8.3795, 21.7741

Details

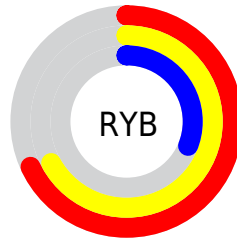
The XYZ color **26.3277, 24.4849, 10.7356** is a dark color, and the websafe version is hex **996633**. A complement of this color would be **18.4534, 19.8961, 42.9120**, and the grayscale version is **23.1153, 24.3191, 26.4835**.

A 20% lighter version of the original color is **53.3613, 50.9810, 27.7967**, and **10.5223, 9.3340, 2.6135** is the 20% darker color. If you saturate the color by 10%, you get **24.7003, 22.1146, 7.4670**, and if you desaturate by 10%, it is **28.2208, 27.1215, 14.9111**.

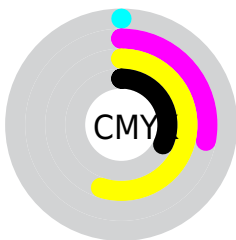
Distribution



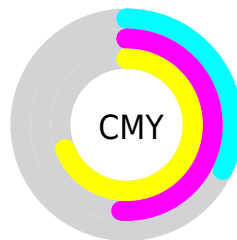
- Red (68%)
- Green (49%)
- Blue (31%)



- Red (68%)
- Yellow (67%)
- Blue (31%)



- Cyan (0%)
- Magenta (28%)
- Yellow (55%)
- Black (32%)



- Cyan (32%)
- Magenta (51%)
- Yellow (69%)

Brightness & Saturation Gradients

These gradients show how the XYZ color 26.3277, 24.4849, 10.7356 changes by changing the brightness by 10 percent. The first figure shows a shift by +10% for each color and the second figure -10%.

Similar to the brightness gradients but the following saturation gradients show a change of the XYZ color 26.3277, 24.4849, 10.7356 by changing the saturation by 10% instead.

■ 26.3277, 24.4849,
10.7356

■ 26.3277, 24.4849,
10.7356

276.6143,
275.2629, 206.5164

■ 17.2029, 15.6937,
5.7774

■ 53.2307, 50.8203,
27.7993

■ 10.4755, 9.3077,
2.6436

■ 71.7396, 69.1334,
40.7420

■ 5.7800, 4.9424,
0.9148

■ 94.1073, 91.3891,
57.1832

■ 2.7512, 2.2135,
0.0000

■ 120.6990,
117.9721, 77.5414

■ 1.0236, 0.7273,
0.0000

■ 151.8803,
149.2665, 102.2354

■ 0.0000, 0.0000,
0.0000

188.0163,

185.6568, 131.6835

229.4726,
227.5275, 166.3043

■ 26.3277, 24.4849,
10.7356

■ 26.3277, 24.4849,
10.7356

■ 24.7003, 22.1146,
7.4670

■ 28.2208, 27.1215,
14.9111

■ 23.3212, 19.9966,
5.0334

■ 30.3922, 30.0305,
20.0550

■ 22.1730, 18.1208,
3.3539

■ 32.8554, 33.2219,
26.2252

■ 21.2345, 16.4743,
2.3307

■ 35.6228, 36.7043,
33.4744

■ 20.7906, 15.6689,
1.9286

■ 38.7056, 40.4859,
41.8516

■ 42.1145, 44.5742,
51.4031

■ 45.8599, 48.9767,
62.1723

■ 49.9515, 53.7006,
74.2004

■ 54.3984, 58.7527,
87.5268

Harmonies

Analogous

The Analogous color harmony consists of three colors that are next to each other on the color wheel.



30.0274, 24.4849, 15.0226



26.3277, 24.4849, 10.7356



22.1759, 24.4849, 9.9931

Triad

The Triadic color harmony groups three colors that are evenly spaced from another and form a triangle on the color wheel.



26.3277, 24.4849, 10.7356



16.3183, 24.4849, 29.9790



28.4785, 24.4849, 48.6081

Complementary

The Complementary color scheme is a pair of colors which are on the opposite of each other on the color wheel.



26.3277, 24.4849, 10.7356



18.4534, 19.8961, 42.9120

Split Complementary

Split-complementary colors differ from the complementary color scheme. The scheme consists of three colors, the original color and two neighbors of the complement color.



24.4040, 24.4849, 55.7763



26.3277, 24.4849, 10.7356



17.6146, 24.4849, 43.1420

Square

The Square scheme is like the rectangle color scheme, but the four colors are evenly spaced on the color wheel.



26.3277, 24.4849, 10.7356



16.7055, 24.4849, 19.1164



20.4627, 24.4849, 53.5265



31.3671, 24.4849, 35.9651

Rectangle

The Rectangle color scheme consists of four colors that form a rectangle on the color wheel.



26.3277, 24.4849, 10.7356



19.7546, 24.4849, 11.3142



20.4627, 24.4849, 53.5265



27.1844, 24.4849, 51.8845

Sweetspot

The Sweet Spot groups the original color and five complimentary colors.



26.3283, 24.4861, 10.7361



63.7305, 65.4755, 58.3607



24.1534, 16.1515, 22.2956



13.9345, 14.2646, 12.3627



84.5950, 89.0005, 96.9216



16.2198, 17.0645, 18.5832

Same Dimension

The Same Dimension uses a secret algorithm to generate beautiful new colors.



26.3283, 24.4861, 10.7361



44.1190, 39.0826, 12.2698



33.6987, 39.2270, 13.1929



8.3202, 8.6452, 8.4435



15.1389, 11.4833, 1.4186



0.4760, 0.4291, 0.0577

Inverse Universe

The Inverse Universe completely reimagines the original color for something new.



18.4534, 19.8961, 42.9120



28.2968, 29.8574, 76.9085



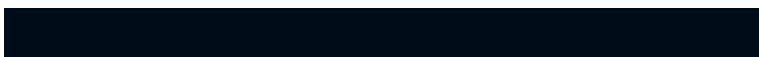
13.7762, 10.5417, 41.3529



7.9007, 8.4008, 10.1578



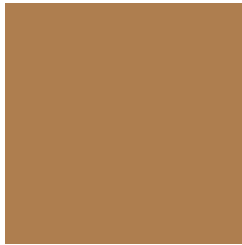
8.1265, 7.3868, 30.0420



0.2808, 0.3149, 0.8540

Previews

White Background



This preview shows how the XYZ color 26.3277, 24.4849, 10.7356 looks on a white background.

Color Contrast Check

Large Text (above 18pt) WCAG AA ✓ Pass

Any Text WCAG AA × Fail

Large Text (above 18pt) WCAG AAA × Fail

Any Text WCAG AAA × Fail

Black Background



This preview shows how the XYZ color 26.3277, 24.4849, 10.7356 looks on a black background.

Color Contrast Check

Large Text (above 18pt) WCAG AA ✓ Pass

Any Text WCAG AA ✓ Pass

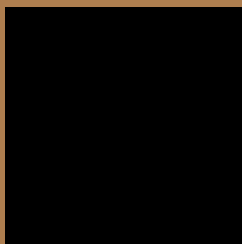
Large Text (above 18pt) WCAG AAA ✓ Pass

Any Text WCAG AAA × Fail

If you want to check with other color combinations, try the [Color Contrast Checker](#).

XYZ 26.3277, 24.4849, 10.7356

Background



This preview shows how black text looks on a background with the XYZ color 26.3277, 24.4849, 10.7356.



This preview shows how white text looks on a background with the XYZ color 26.3277, 24.4849,

Color Blindness Simulation

Color vision deficiency is a very complex topic, and I could not describe the different causes any better than Wikipedia does, so if you want to learn more, you should check out their [article about color blindness](#).

Dichromacy



Original Color

26.3277, 24.4849, 10.7356

Protanopia

22.7599, 24.6224, 11.7366

Deuteranopia

25.0837, 24.6223, 10.6383



Tritanopia

29.0390, 24.4829, 23.9640

Trichromacy



Original Color

26.3277, 24.4849, 10.7356

Protanomaly

23.8748, 24.3808, 11.4303

Deuteranomaly

25.5876, 24.6856, 10.6239

Tritanomaly

27.9602, 24.4139, 18.2776

Monochromacy



Original Color

26.3277, 24.4849, 10.7356

Achromatopsia

23.0288, 24.2281, 26.3844

Achromatomaly

23.7402, 24.1299, 19.6259

CSS Examples

Text

The CSS property to change the color of the text to XYZ 26.3277, 24.4849, 10.7356 is called "color". The color property can be set on classes, ids or directly on the HTML element.

This example shows how text in the color `rgb(174, 126, 79)` looks like.

```
.text, #text, p{  
    color:rgb(174, 126, 79)  
}
```

If you want to add a text shadow in that color use the text-shadow property, you can generate a text shadow directly with our [CSS Text Shadow Generator](#).

Here you see how black text with a 4 pixel rgb(174, 126, 79) colored shadow looks like.

```
.shadow{ text-shadow: 4px 4px 2px rgb(174, 126, 79) }
```

Border

The CSS property to change the border of an element to XYZ 26.3277, 24.4849, 10.7356 is called "border". The border property can be set on classes, ids or directly on the HTML element.

This example shows the color as border, it can be applied via the CSS property "border" or "border-color".

```
.border, #border, table{ border:4px solid rgb(174, 126, 79) }
```


If only the border color should be changed use the property `border-color`.

```
.border{ border-color:rgb(174, 126, 79) }
```

If you want to add a box shadow in that color use:

Here you see how a box with a 4 pixel `rgb(174, 126, 79)` colored shadow looks like.

```
.boxshadow{ -moz-box-shadow:4px 4px 4px  
4px rgb(174, 126, 79); -webkit-box-  
shadow:4px 4px 4px 4px rgb(174, 126, 79);  
box-shadow:4px 4px 4px 4px rgb(174, 126,  
79) }
```

Background

The CSS property to change the background color of an element to XYZ 26.3277, 24.4849, 10.7356 is called "background". The background property can be set on classes, ids or directly on the HTML element.

```
.background, #background, body{  
background: rgb(174, 126, 79) }
```

If only the background color should be changed can be used:

```
.background{ background-color: rgb(174,  
126, 79) }
```

This example shows the color as background, it is applied via the CSS property "background".

To optimize and compress your CSS code, you can use our [online CSS compressor and optimizer](#) based on csstidy. If you want to create a linear or radial gradient as background or border, check our [CSS Gradient Generator](#).

Hey! You found this booklet interesting? Support Converting Colors with the new Membership Option!

The pro membership hides all ads, plus gives you double the colors in the color bucket, and more awesome pro features!

[Learn more, Memberships starting at \\$2.50/m!](#)

**Follow me
on Twitter!**

@ConvertingColor