

Converting Colors

XYZ(26.2942, 25.2721, 11.1939)

Have a look what the booklet for
XYZ(26.2942, 25.2721, 11.1939)
contains.

XYZ(26.2624, 25.2173, 11.2678)	3
<i>Conversions</i>	4
<i>Details</i>	6
<i>Harmonies</i>	12
<i>Previews</i>	24
<i>Color Blindness Simulation</i>	28
<i>CSS Examples</i>	31

Color

**XYZ(26.2624, 25.2173,
11.2678)**

Conversions

Conversions Part 1

Format	Color
Hex	AB8251
RGB	171, 130, 81
RGB Percent	67%, 51%, 32%
CMY	0.3294, 0.4902, 0.6823
CMYK	0.00, 0.24, 0.53, 0.33
HSL	33°, 36%, 49%
HSV	33°, 53%, 67%
XYZ	26.2624, 25.2173, 11.2678
YIQ	136.6730, 40.1650, -6.5470

Conversions

Conversions Part 2

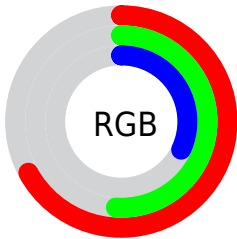
Format	Color
R _Y B	156, 171, 81
Decimal	11240017
CIE Lab	57.29, 9.77, 32.46
CIE LCh	57, 33.897, 73.243
Yxy	25.2173, 0.4185, 0.4019
Android (android.graphics.Color)	4289430097 (0xFFAB8251)
YUV	136.6730, -27.4468, 30.1048
Hunter-Lab	50.2168, 5.4725, 21.8481

Details

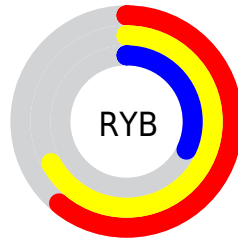
The XYZ color **26.2624, 25.2173, 11.2678** is a dark color, and the websafe version is hex **CC9966**. A complement of this color would be **17.7031, 18.6077, 41.1864**, and the grayscale version is **23.7446, 24.9812, 27.2045**.

A 20% lighter version of the original color is **53.0251, 51.9996, 28.7149**, and **10.4336, 9.7134, 2.8383** is the 20% darker color. If you saturate the color by 10%, you get **24.7031, 22.9990, 7.9730**, and if you desaturate by 10%, it is **28.0628, 27.6595, 15.4401**.

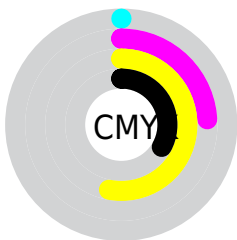
Distribution



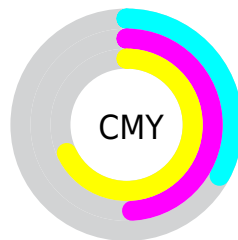
- Red (67%)
- Green (51%)
- Blue (32%)



- Red (61%)
- Yellow (67%)
- Blue (32%)



- Cyan (0%)
- Magenta (24%)
- Yellow (53%)
- Black (33%)



- Cyan (33%)
- Magenta (49%)
- Yellow (68%)

Brightness & Saturation Gradients

These gradients show how the XYZ color 26.2624, 25.2173, 11.2678 changes by changing the brightness by 10 percent. The first figure shows a shift by +10% for each color and the second figure -10%.

Similar to the brightness gradients but the following saturation gradients show a change of the XYZ color 26.2624, 25.2173, 11.2678 by changing the saturation by 10% instead.

■ 26.2624, 25.2173,
11.2678

■ 26.2624, 25.2173,
11.2678

276.3009,
278.9184, 210.2987

■ 17.1538, 16.2390,
6.1308

■ 53.1262, 52.0095,
28.7985

■ 10.4402, 9.6935,
2.8547

■ 71.6122, 70.5923,
42.0293

■ 5.7563, 5.1962,
1.0209

■ 93.9545, 93.1453,
58.7952

■ 2.7367, 2.3628,
0.0000

■ 120.5188,
120.0530, 79.5146

■ 1.0161, 0.8067,
0.0000

■ 151.6701,
151.6997, 104.6061

■ 0.0000, 0.0000,
0.0000

187.7741,

188.4700, 134.4882

229.1959,
230.7481, 169.5796

■ 26.2624, 25.2173,
11.2678

■ 26.2624, 25.2173,
11.2678

■ 24.7031, 22.9990,
7.9730

■ 28.0628, 27.6595,
15.4401

■ 23.3691, 20.9926,
5.4887

■ 30.1153, 30.3298,
20.5474

■ 22.2450, 19.1900,
3.7400

■ 32.4322, 33.2366,
26.6440

■ 21.3121, 17.5809,
2.6376

■ 35.0245, 36.3868,
33.7794

■ 20.7183, 16.5056,
2.0939

■ 37.9022, 39.7870,
41.9999

■ 41.0752, 43.4434,
51.3490

■ 44.5525, 47.3619,
61.8677

■ 48.3428, 51.5484,
73.5951

■ 52.4546, 56.0084,
86.5683

Harmonies

Analogous

The Analogous color harmony consists of three colors that are next to each other on the color wheel.



30.0398, 25.2173, 14.9301



26.2624, 25.2173, 11.2678



22.2438, 25.2173, 11.0753

Triad

The Triadic color harmony groups three colors that are evenly spaced from another and form a triangle on the color wheel.



26.2624, 25.2173, 11.2678



17.2147, 25.2173, 32.8371



29.6526, 25.2173, 46.9053

Complementary

The Complementary color scheme is a pair of colors which are on the opposite of each other on the color wheel.



26.2624, 25.2173, 11.2678



17.7031, 18.6077, 41.1864

Split Complementary

Split-complementary colors differ from the complementary color scheme. The scheme consists of three colors, the original color and two neighbors of the complement color.



25.7797, 25.2173, 55.0736



26.2624, 25.2173, 11.2678



18.7755, 25.2173, 45.5495

Square

The Square scheme is like the rectangle color scheme, but the four colors are evenly spaced on the color wheel.



26.2624, 25.2173, 11.2678



17.3131, 25.2173, 21.5664



21.8118, 25.2173, 54.5178



32.1418, 25.2173, 34.3339

Rectangle

The Rectangle color scheme consists of four colors that form a rectangle on the color wheel.



26.2624, 25.2173, 11.2678



19.9824, 25.2173, 12.8123



21.8118, 25.2173, 54.5178



28.4518, 25.2173, 50.3957

Sweetspot

The Sweet Spot groups the original color and five complimentary colors.



26.2630, 25.2185, 11.2683



60.9736, 63.0555, 55.6092



23.3122, 15.9730, 20.5935



13.3904, 13.8104, 11.8308



82.5889, 86.8899, 94.6231



15.4596, 16.2647, 17.7123

Same Dimension

The Same Dimension uses a secret algorithm to generate beautiful new colors.



26.2630, 25.2185, 11.2683



43.8631, 40.6336, 13.5307



32.1964, 38.0445, 13.4312



8.3530, 8.7108, 8.4545



15.6718, 12.5492, 1.5962



0.4898, 0.4567, 0.0623

Inverse Universe

The Inverse Universe completely reimagines the original color for something new.



17.7031, 18.6077, 41.1864



26.8919, 27.5438, 72.9010



13.9494, 10.7102, 39.8599



7.8681, 8.3357, 10.1469



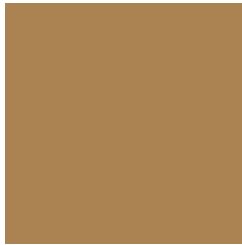
7.6407, 6.4153, 29.8801



0.2677, 0.2887, 0.8496

Previews

White Background



This preview shows how the XYZ color 26.2624, 25.2173, 11.2678 looks on a white background.

Color Contrast Check

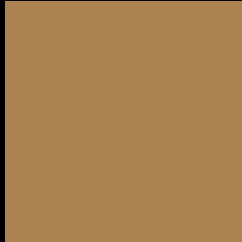
Large Text (above 18pt) WCAG AA ✓ Pass

Any Text WCAG AA × Fail

Large Text (above 18pt) WCAG AAA × Fail

Any Text WCAG AAA × Fail

Black Background



This preview shows how the XYZ color 26.2624, 25.2173, 11.2678 looks on a black background.

Color Contrast Check

Large Text (above 18pt) WCAG AA ✓ Pass

Any Text WCAG AA ✓ Pass

Large Text (above 18pt) WCAG AAA ✓ Pass

Any Text WCAG AAA × Fail

If you want to check with other color combinations, try the [Color Contrast Checker](#).

XYZ 26.2624, 25.2173, 11.2678

Background



This preview shows how black text looks on a background with the XYZ color 26.2624, 25.2173, 11.2678.



This preview shows how white text looks on a background with the XYZ color 26.2624, 25.2173,

Color Blindness Simulation

Color vision deficiency is a very complex topic, and I could not describe the different causes any better than Wikipedia does, so if you want to learn more, you should check out their [article about color blindness](#).

Dichromacy



Original Color

26.2624, 25.2173, 11.2678

Protanopia

23.4512, 25.3964, 12.0535

Deuteranopia

25.8849, 25.4214, 11.3271



Tritanopia

29.1205, 25.2227, 25.5240

Trichromacy



Original Color

26.2624, 25.2173, 11.2678

Protanomaly

24.3259, 25.2216, 11.7698

Deuteranomaly

25.9637, 25.2617, 11.2921

Tritanomaly

27.9537, 25.1353, 19.2979

Monochromacy



Original Color

26.2624, 25.2173, 11.2678

Achromatopsia

23.7775, 25.0158, 27.2422

Achromatomaly

24.1304, 24.7241, 20.3300

CSS Examples

Text

The CSS property to change the color of the text to XYZ 26.2624, 25.2173, 11.2678 is called "color". The color property can be set on classes, ids or directly on the HTML element.

This example shows how text in the color `rgb(171, 130, 81)` looks like.

```
.text, #text, p{  
    color:rgb(171, 130, 81)  
}
```

If you want to add a text shadow in that color use the text-shadow property, you can generate a text shadow directly with our [CSS Text Shadow Generator](#).

Here you see how black text with a 4 pixel rgb(171, 130, 81) colored shadow looks like.

```
.shadow{ text-shadow: 4px 4px 2px rgb(171, 130, 81) }
```

Border

The CSS property to change the border of an element to XYZ 26.2624, 25.2173, 11.2678 is called "border". The border property can be set on classes, ids or directly on the HTML element.

This example shows the color as border, it can be applied via the CSS property "border" or "border-color".

```
.border, #border, table{ border:4px solid rgb(171, 130, 81) }
```


If only the border color should be changed use the property `border-color`.

```
.border{ border-color:rgb(171, 130, 81) }
```

If you want to add a box shadow in that color use:

Here you see how a box with a 4 pixel `rgb(171, 130, 81)` colored shadow looks like.

```
.boxshadow{ -moz-box-shadow:4px 4px 4px  
4px rgb(171, 130, 81); -webkit-box-  
shadow:4px 4px 4px 4px rgb(171, 130, 81);  
box-shadow:4px 4px 4px 4px rgb(171, 130,  
81) }
```

Background

The CSS property to change the background color of an element to XYZ 26.2624, 25.2173, 11.2678 is called "background". The background property can be set on classes, ids or directly on the HTML element.

```
.background, #background, body{  
background: rgb(171, 130, 81) }
```

If only the background color should be changed can be used:

```
.background{ background-color: rgb(171,  
130, 81) }
```

This example shows the color as background, it is applied via the CSS property "background".

To optimize and compress your CSS code, you can use our [online CSS compressor and optimizer](#) based on csstidy. If you want to create a linear or radial gradient as background or border, check our [CSS Gradient Generator](#).

Hey! You found this booklet interesting? Support Converting Colors with the new Membership Option!

The pro membership hides all ads, plus gives you double the colors in the color bucket, and more awesome pro features!

[Learn more, Memberships starting at \\$2.50/m!](#)

**Follow me
on Twitter!**

@ConvertingColor