

Converting Colors

XYZ(26.3351, 24.6101, 14.1302)

Have a look what the booklet for
XYZ(26.3351, 24.6101, 14.1302)
contains.

XYZ(26.4495, 24.6629, 14.1928)	3
<i>Conversions</i>	4
<i>Details</i>	6
<i>Harmonies</i>	12
<i>Previews</i>	24
<i>Color Blindness Simulation</i>	28
<i>CSS Examples</i>	31

Color

**XYZ(26.4495, 24.6629,
14.1928)**

Conversions

Conversions Part 1

Format	Color
Hex	AB7F5F
RGB	171, 127, 95
RGB Percent	67%, 50%, 37%
CMY	0.3294, 0.5019, 0.6274
CMYK	0.00, 0.26, 0.44, 0.33
HSL	25°, 31%, 52%
HSV	25°, 44%, 67%
XYZ	26.4495, 24.6629, 14.1928
YIQ	136.5080, 36.4960, -0.6240

Conversions

Conversions Part 2

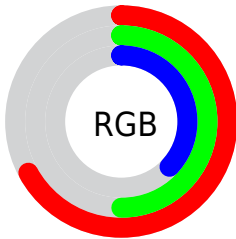
Format	Color
RYB	171, 150, 95
Decimal	11239263
CIELab	56.75, 12.88, 24.02
CIELCh	57, 27.251, 61.802
Yxy	24.6629, 0.4050, 0.3777
Android (android.graphics.Color)	4289429343 (0xFFAB7F5F)
YUV	136.5080, -20.4634, 30.2495
Hunter-Lab	49.6618, 8.1598, 17.8188

Details

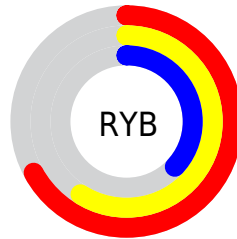
The XYZ color **26.4495, 24.6629, 14.1928** is a dark color, and the websafe version is hex **CC9966**. A complement of this color would be **21.3022, 23.8373, 42.0063**, and the grayscale version is **23.6579, 24.8899, 27.1051**.

A 20% lighter version of the original color is **53.5045, 51.2118, 34.2590**, and **10.5940, 9.4441, 4.0608** is the 20% darker color. If you saturate the color by 10%, you get **24.5397, 21.9537, 10.1333**, and if you desaturate by 10%, it is **28.6568, 27.6940, 19.1938**.

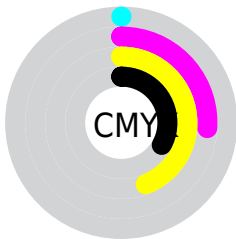
Distribution



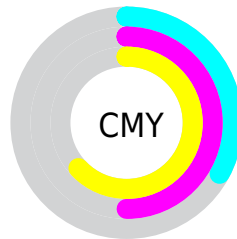
- Red (67%)
- Green (50%)
- Blue (37%)



- Red (67%)
- Yellow (59%)
- Blue (37%)



- Cyan (0%)
- Magenta (26%)
- Yellow (44%)
- Black (33%)





- Cyan (33%)
- Magenta (50%)
- Yellow (63%)

Brightness & Saturation Gradients

These gradients show how the XYZ color 26.4495, 24.6629, 14.1928 changes by changing the brightness by 10 percent. The first figure shows a shift by +10% for each color and the second figure -10%.


Similar to the brightness gradients but the following saturation gradients show a change of the XYZ color 26.4495, 24.6629, 14.1928 by changing the saturation by 10% instead.


 26.4495, 24.6629,
14.1928


 26.4495, 24.6629,
14.1928


277.1981,
276.1550, 229.8970


 17.2947, 15.8261,
8.1146


 53.4254, 51.1098,
34.1528


 10.5414, 9.4012,
4.0795


 71.9771, 69.4887,
48.8716

 5.8244, 5.0038,
1.6691

 94.3918, 91.8171,
67.3078

 2.7782, 2.2495,
0.3394

 121.0350,
118.4793, 89.8798

 1.0376, 0.7468,
0.0000

152.2718,
149.8599, 117.0061

 0.0000, 0.0000,
0.0000

188.4677,

186.3430, 149.1054

229.9880,
228.3133, 186.5962

■ 26.4495, 24.6629,
14.1928

■ 26.4495, 24.6629,
14.1928

■ 24.5397, 21.9537,
10.1333

■ 28.6568, 27.6940,
19.1938

■ 22.9107, 19.5512,
6.9531

■ 31.1734, 31.0544,
25.1901

■ 21.5467, 17.4438,
4.5849

■ 34.0129, 34.7558,
32.2329

■ 20.4291, 15.6179,
2.9507

■ 37.1871, 38.8081,
40.3697

■ 19.5363, 14.0580,
1.9566

■ 40.7074, 43.2207,
49.6450

■ 19.1125, 13.2938,
1.5586

■ 44.5847, 48.0029,
60.1007

■ 48.8291, 53.1633,
71.7766

■ 53.4505, 58.7104,
84.7108

■ 58.4585, 64.6523,
98.9395

Harmonies

Analogous

The Analogous color harmony consists of three colors that are next to each other on the color wheel.



29.0287, 24.6629, 18.6454



26.4495, 24.6629, 14.1928



23.2497, 24.6629, 12.8830

Triad

The Triadic color harmony groups three colors that are evenly spaced from another and form a triangle on the color wheel.



26.4495, 24.6629, 14.1928



17.8479, 24.6629, 27.4079



26.8119, 24.6629, 44.6455

Complementary

The Complementary color scheme is a pair of colors which are on the opposite of each other on the color wheel.



26.4495, 24.6629, 14.1928



21.3022, 23.8373, 42.0063

Split Complementary

Split-complementary colors differ from the complementary color scheme. The scheme consists of three colors, the original color and two neighbors of the complement color.



23.6341, 24.6629, 48.4229



26.4495, 24.6629, 14.1928



18.6213, 24.6629, 37.1743

Square

The Square scheme is like the rectangle color scheme, but the four colors are evenly spaced on the color wheel.



26.4495, 24.6629, 14.1928



18.4570, 24.6629, 19.4029



20.6704, 24.6629, 45.4224



29.2509, 24.6629, 36.0027

Rectangle

The Rectangle color scheme consists of four colors that form a rectangle on the color wheel.



26.4495, 24.6629, 14.1928



21.2439, 24.6629, 13.6601



20.6704, 24.6629, 45.4224



25.7853, 24.6629, 46.6042

Sweetspot

The Sweet Spot groups the original color and five complimentary colors.



26.4501, 24.6641, 14.1933



61.5733, 63.0932, 59.3906



25.5715, 18.7164, 26.8190



13.4716, 13.7355, 12.5893



82.5889, 86.8899, 94.6231



15.4596, 16.2647, 17.7123

Same Dimension

The Same Dimension uses a secret algorithm to generate beautiful new colors.



26.4501, 24.6641, 14.1933



44.1106, 39.5507, 18.4778



32.2552, 36.2743, 16.1283



8.2720, 8.5489, 8.4275



14.4579, 10.1213, 1.1916



0.4571, 0.3914, 0.0514

Inverse Universe

The Inverse Universe completely reimagines the original color for something new.



21.3022, 23.8373, 42.0063



33.7215, 37.8582, 74.5319



16.7563, 14.7456, 40.4910



7.9494, 8.4982, 10.1740



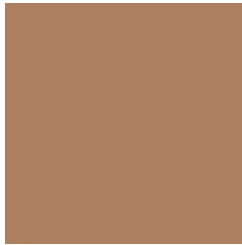
8.9572, 9.0482, 30.3189



0.3018, 0.3569, 0.8610

Previews

White Background



This preview shows how the XYZ color 26.4495, 24.6629, 14.1928 looks on a white background.

Color Contrast Check

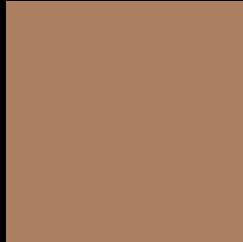
Large Text (above 18pt) WCAG AA ✓ Pass

Any Text WCAG AA × Fail

Large Text (above 18pt) WCAG AAA × Fail

Any Text WCAG AAA × Fail

Black Background



This preview shows how the XYZ color 26.4495, 24.6629, 14.1928 looks on a black background.

Color Contrast Check

Large Text (above 18pt) WCAG AA ✓ Pass

Any Text WCAG AA ✓ Pass

Large Text (above 18pt) WCAG AAA ✓ Pass

Any Text WCAG AAA × Fail

If you want to check with other color combinations, try the [Color Contrast Checker](#).

XYZ 26.4495, 24.6629, 14.1928

Background



This preview shows how black text looks on a background with the XYZ color 26.4495, 24.6629, 14.1928.



This preview shows how white text looks on a background with the XYZ color 26.4495, 24.6629,

Color Blindness Simulation

Color vision deficiency is a very complex topic, and I could not describe the different causes any better than Wikipedia does, so if you want to learn more, you should check out their [article about color blindness](#).

Dichromacy



Original Color

26.4495, 24.6629, 14.1928

Protanopia

23.0889, 24.7122, 15.3574

Deuteranopia

25.2409, 24.8273, 14.0515



Tritanopia

28.5118, 24.5564, 24.7099

Trichromacy



Original Color

26.4495, 24.6629, 14.1928

Protanomaly

24.3024, 24.7248, 15.0468

Deuteranomaly

25.7289, 24.8804, 14.0360

Tritanomaly

27.7112, 24.6075, 20.4287

Monochromacy



Original Color

26.4495, 24.6629, 14.1928

Achromatopsia

23.7775, 25.0158, 27.2422

Achromatomaly

24.2948, 24.5698, 21.8743

CSS Examples

Text

The CSS property to change the color of the text to XYZ 26.4495, 24.6629, 14.1928 is called "color". The color property can be set on classes, ids or directly on the HTML element.

This example shows how text in the color `rgb(171, 127, 95)` looks like.

```
.text, #text, p{  
    color:rgb(171, 127, 95)  
}
```

If you want to add a text shadow in that color use the text-shadow property, you can generate a text shadow directly with our [CSS Text Shadow Generator](#).

Here you see how black text with a 4 pixel rgb(171, 127, 95) colored shadow looks like.

```
.shadow{ text-shadow: 4px 4px 2px rgb(171, 127, 95) }
```

Border

The CSS property to change the border of an element to XYZ 26.4495, 24.6629, 14.1928 is called "border". The border property can be set on classes, ids or directly on the HTML element.

This example shows the color as border, it can be applied via the CSS property "border" or "border-color".

```
.border, #border, table{ border:4px solid rgb(171, 127, 95) }
```


If only the border color should be changed use the property `border-color`.

```
.border{ border-color:rgb(171, 127, 95) }
```

If you want to add a box shadow in that color use:

Here you see how a box with a 4 pixel `rgb(171, 127, 95)` colored shadow looks like.

```
.boxshadow{ -moz-box-shadow:4px 4px 4px  
4px rgb(171, 127, 95); -webkit-box-  
shadow:4px 4px 4px 4px rgb(171, 127, 95);  
box-shadow:4px 4px 4px 4px rgb(171, 127,  
95) }
```

Background

The CSS property to change the background color of an element to XYZ 26.4495, 24.6629, 14.1928 is called "background". The background property can be set on classes, ids or directly on the HTML element.

```
.background, #background, body{  
background: rgb(171, 127, 95) }
```

If only the background color should be changed can be used:

```
.background{ background-color: rgb(171,  
127, 95) }
```

This example shows the color as background, it is applied via the CSS property "background".

To optimize and compress your CSS code, you can use our [online CSS compressor and optimizer](#) based on csstidy. If you want to create a linear or radial gradient as background or border, check our [CSS Gradient Generator](#).

Hey! You found this booklet interesting? Support Converting Colors with the new Membership Option!

The pro membership hides all ads, plus gives you double the colors in the color bucket, and more awesome pro features!

[Learn more, Memberships starting at \\$2.50/m!](#)

**Follow me
on Twitter!**

@ConvertingColor