

Converting Colors

XYZ(26.5570, 26.1573, 16.8791)

Have a look what the booklet for
XYZ(26.5570, 26.1573, 16.8791)
contains.

XYZ(26.7308, 26.3472, 17.0413)	3
<i>Conversions</i>	4
<i>Details</i>	6
<i>Harmonies</i>	12
<i>Previews</i>	24
<i>Color Blindness Simulation</i>	28
<i>CSS Examples</i>	31

Color

**XYZ(26.7308, 26.3472,
17.0413)**

Conversions

Conversions Part 1

Format	Color
Hex	A58769
RGB	165, 135, 105
RGB Percent	65%, 53%, 41%
CMY	0.3529, 0.4706, 0.5882
CMYK	0.00, 0.18, 0.36, 0.35
HSL	30°, 25%, 53%
HSV	30°, 36%, 65%
XYZ	26.7308, 26.3472, 17.0413
YIQ	140.5500, 27.5100, -2.9700

Conversions

Conversions Part 2

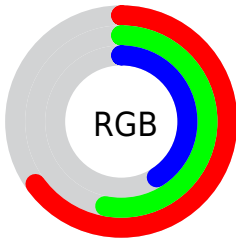
Format	Color
R_{YB}	165, 165, 105
Decimal	10848105
CIE _{Lab}	58.37, 7.05, 20.43
CIE _{LCh}	58, 21.616, 70.969
Yxy	26.3472, 0.3812, 0.3757
Android (android.graphics.Color)	4289038185 (0xFFA58769)
YUV	140.5500, -17.5261, 21.4427
Hunter-Lab	51.3295, 3.1305, 16.2465

Details

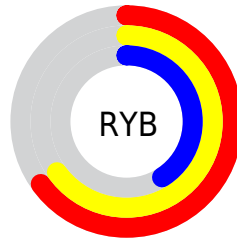
The XYZ color **26.7308, 26.3472, 17.0413** is a dark color, and the websafe version is hex **999966**. A complement of this color would be **21.2809, 23.0470, 38.9241**, and the grayscale version is **25.2007, 26.5131, 28.8728**.

A 20% lighter version of the original color is **53.8028, 53.7389, 38.9894**, and **10.6943, 10.2472, 5.4172** is the 20% darker color. If you saturate the color by 10%, you get **24.8571, 23.8279, 12.6309**, and if you desaturate by 10%, it is **28.8596, 29.1132, 22.3491**.

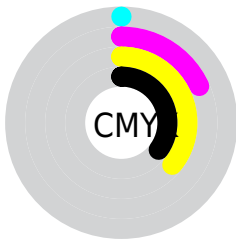
Distribution



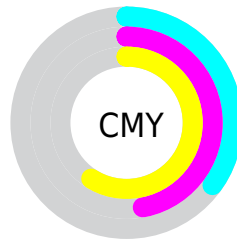
- Red (65%)
- Green (53%)
- Blue (41%)



- Red (65%)
- Yellow (65%)
- Blue (41%)



- Cyan (0%)
- Magenta (18%)
- Yellow (36%)
- Black (35%)



- Cyan (35%)
- Magenta (47%)
- Yellow (59%)

Brightness & Saturation Gradients

These gradients show how the XYZ color 26.7308, 26.3472, 17.0413 changes by changing the brightness by 10 percent. The first figure shows a shift by +10% for each color and the second figure -10%.

Similar to the brightness gradients but the following saturation gradients show a change of the XYZ color 26.7308, 26.3472, 17.0413 by changing the saturation by 10% instead.

■ 26.7308, 26.3472,
17.0413

■ 26.7308, 26.3472,
17.0413

278.5427,
284.4823, 247.4623

■ 17.5067, 17.0836,
10.1017

■ 53.8745, 53.8345,
39.1884

■ 10.6939, 10.2941,
5.3599

■ 72.5249, 72.8270,
55.2329

■ 5.9272, 5.5944,
2.3976

■ 95.0480, 95.8313,
75.1495

■ 2.8411, 2.6000,
0.7851

■ 121.8092,
123.2316, 99.3567

■ 1.0703, 0.9267,
0.0000

153.1740,
155.4125, 128.2731

■ 0.0000, 0.0000,
0.0000

189.5076,

■ 0.0000, 0.0000,

192.7583, 162.3171

0.0000

231.1753,
235.6535, 201.9073

■ 26.7308, 26.3472,
17.0413

■ 26.7308, 26.3472,
17.0413

■ 24.8571, 23.8279,
12.6309

■ 28.8596, 29.1132,
22.3491

■ 23.2250, 21.5437,
9.0654

■ 31.2522, 32.1296,
28.5997

■ 21.8224, 19.4875,
6.2891

■ 33.9193, 35.4046,
35.8373

■ 20.6355, 17.6502,
4.2388

■ 36.8705, 38.9450,
44.1026

■ 19.6481, 16.0219,
2.8416

■ 40.1147, 42.7572,
53.4343

■ 18.8387, 14.5902,
1.9956

■ 43.6604, 46.8473,
63.8688

■ 18.5729, 14.1111,
1.7448

■ 47.5159, 51.2214,
75.4411

■ 51.6890, 55.8853,
88.1844

■ 56.1872, 60.8444,
102.1305

Harmonies

Analogous

The Analogous color harmony consists of three colors that are next to each other on the color wheel.



29.0656, 26.3472, 20.1874



26.7308, 26.3472, 17.0413



24.0906, 26.3472, 16.6709

Triad

The Triadic color harmony groups three colors that are evenly spaced from another and form a triangle on the color wheel.



26.7308, 26.3472, 17.0413



20.3906, 26.3472, 31.5379



28.5129, 26.3472, 41.0968

Complementary

The Complementary color scheme is a pair of colors which are on the opposite of each other on the color wheel.



26.7308, 26.3472, 17.0413



21.2809, 23.0470, 38.9241

Split Complementary

Split-complementary colors differ from the complementary color scheme. The scheme consists of three colors, the original color and two neighbors of the complement color.



26.0186, 26.3472, 45.4194



26.7308, 26.3472, 17.0413



21.4084, 26.3472, 39.2909

Square

The Square scheme is like the rectangle color scheme, but the four colors are evenly spaced on the color wheel.



26.7308, 26.3472, 17.0413



20.5518, 26.3472, 24.2118



23.4263, 26.3472, 44.7060



30.1433, 26.3472, 33.6836

Rectangle

The Rectangle color scheme consists of four colors that form a rectangle on the color wheel.



26.7308, 26.3472, 17.0413



22.5247, 26.3472, 17.9585



23.4263, 26.3472, 44.7060



27.7407, 26.3472, 43.0136

Sweetspot

The Sweet Spot groups the original color and five complimentary colors.



26.7315, 26.3484, 17.0418



58.3735, 60.5106, 57.6847



24.9419, 19.8520, 25.4391



12.6296, 13.0666, 12.2535



78.6606, 82.7571, 90.1225



14.0027, 14.7319, 16.0430

Same Dimension

The Same Dimension uses a secret algorithm to generate beautiful new colors.



26.7315, 26.3484, 17.0418



45.0109, 43.3486, 23.7488



31.5220, 35.9295, 18.6387



7.3527, 7.6437, 7.4680



14.1007, 10.7753, 1.3366



0.3435, 0.3209, 0.0438

Inverse Universe

The Inverse Universe completely reimagines the original color for something new.



21.2809, 23.0470, 38.9241



33.7338, 36.5180, 69.0231



17.6691, 15.8234, 37.7202



6.9793, 7.4176, 8.9670



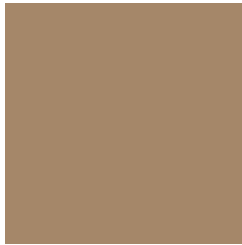
7.4985, 6.7764, 27.8426



0.2048, 0.2369, 0.6008

Previews

White Background



This preview shows how the XYZ color 26.7308, 26.3472, 17.0413 looks on a white background.

Color Contrast Check

Large Text (above 18pt) WCAG AA ✓ Pass

Any Text WCAG AA × Fail

Large Text (above 18pt) WCAG AAA × Fail

Any Text WCAG AAA × Fail

Black Background



This preview shows how the XYZ color 26.7308, 26.3472, 17.0413 looks on a black background.

Color Contrast Check

Large Text (above 18pt) WCAG AA ✓ Pass

Any Text WCAG AA ✓ Pass

Large Text (above 18pt) WCAG AAA ✓ Pass

Any Text WCAG AAA × Fail

If you want to check with other color combinations, try the [Color Contrast Checker](#).

XYZ 26.7308, 26.3472, 17.0413

Background



This preview shows how black text looks on a background with the XYZ color 26.7308, 26.3472, 17.0413.



This preview shows how white text looks on a background with the XYZ color 26.7308, 26.3472,

Color Blindness Simulation

Color vision deficiency is a very complex topic, and I could not describe the different causes any better than Wikipedia does, so if you want to learn more, you should check out their [article about color blindness](#).

Dichromacy



Original Color

26.7308, 26.3472, 17.0413

Protanopia

24.6096, 26.3017, 17.6896

Deuteranopia

26.9397, 26.4549, 17.0510



Tritanopia

29.0784, 26.2937, 28.3535

Trichromacy



Original Color

26.7308, 26.3472, 17.0413

Protanomaly

25.2076, 26.1861, 17.3615

Deuteranomaly

26.9397, 26.4549, 17.0510

Tritanomaly

28.2305, 26.3597, 23.6787

Monochromacy



Original Color

26.7308, 26.3472, 17.0413

Achromatopsia

25.3171, 26.6356, 29.0061

Achromatomaly

25.7066, 26.5078, 24.1837

CSS Examples

Text

The CSS property to change the color of the text to XYZ 26.7308, 26.3472, 17.0413 is called "color". The color property can be set on classes, ids or directly on the HTML element.

This example shows how text in the color `rgb(165, 135, 105)` looks like.

```
.text, #text, p{  
    color:rgb(165, 135, 105)  
}
```

If you want to add a text shadow in that color use the text-shadow property, you can generate a text shadow directly with our [CSS Text Shadow Generator](#).

Here you see how black text with a 4 pixel rgb(165, 135, 105) colored shadow looks like.

```
.shadow{ text-shadow: 4px 4px 2px rgb(165, 135, 105) }
```

Border

The CSS property to change the border of an element to XYZ 26.7308, 26.3472, 17.0413 is called "border". The border property can be set on classes, ids or directly on the HTML element.

This example shows the color as border, it can be applied via the CSS property "border" or "border-color".

```
.border, #border, table{ border:4px solid rgb(165, 135, 105) }
```


If only the border color should be changed use the property `border-color`.

```
.border{ border-color:rgb(165, 135, 105) }
```

If you want to add a box shadow in that color use:

Here you see how a box with a 4 pixel `rgb(165, 135, 105)` colored shadow looks like.

```
.boxshadow{ -moz-box-shadow:4px 4px 4px  
4px rgb(165, 135, 105); -webkit-box-  
shadow:4px 4px 4px 4px rgb(165, 135, 105);  
box-shadow:4px 4px 4px 4px rgb(165, 135,  
105) }
```

Background

The CSS property to change the background color of an element to XYZ 26.7308, 26.3472, 17.0413 is called "background". The background property can be set on classes, ids or directly on the HTML element.

```
.background, #background, body{  
background: rgb(165, 135, 105) }
```

If only the background color should be changed can be used:

```
.background{ background-color: rgb(165,  
135, 105) }
```

This example shows the color as background, it is applied via the CSS property "background".

To optimize and compress your CSS code, you can use our [online CSS compressor and optimizer](#) based on csstidy. If you want to create a linear or radial gradient as background or border, check our [CSS Gradient Generator](#).

Hey! You found this booklet interesting? Support Converting Colors with the new Membership Option!

The pro membership hides all ads, plus gives you double the colors in the color bucket, and more awesome pro features!

[Learn more, Memberships starting at \\$2.50/m!](#)

**Follow me
on Twitter!**

@ConvertingColor