

Converting Colors

XYZ(26.5929, 25.2645, 17.4277)

Have a look what the booklet for
XYZ(26.5929, 25.2645, 17.4277)
contains.

XYZ(26.5728, 25.2423, 17.3816)	3
<i>Conversions</i>	4
<i>Details</i>	6
<i>Harmonies</i>	12
<i>Previews</i>	24
<i>Color Blindness Simulation</i>	28
<i>CSS Examples</i>	31

Color

**XYZ(26.5728, 25.2423,
17.3816)**

Conversions

Conversions Part 1

Format	Color
Hex	A7826B
RGB	167, 130, 107
RGB Percent	65%, 51%, 42%
CMY	0.3451, 0.4902, 0.5804
CMYK	0.00, 0.22, 0.36, 0.35
HSL	23°, 25%, 54%
HSV	23°, 36%, 65%
XYZ	26.5728, 25.2423, 17.3816
YIQ	138.4410, 29.4350, 0.6910

Conversions

Conversions Part 2

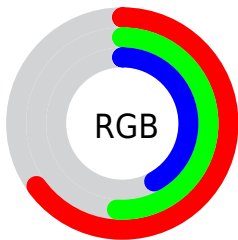
Format	Color
R_{YB}	167, 144, 107
Decimal	10977899
CIE _{Lab}	57.31, 10.95, 17.90
CIE _{LCh}	57, 20.985, 58.558
Yxy	25.2423, 0.3840, 0.3648
Android (android.graphics.Color)	4289167979 (0xFFA7826B)
YUV	138.4410, -15.5004, 25.0462
Hunter-Lab	50.2417, 6.4855, 14.6573

Details

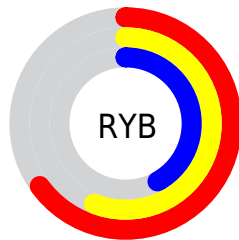
The XYZ color **26.5728, 25.2423, 17.3816** is a dark color, and the websafe version is hex **996666**. A complement of this color would be **23.0113, 25.8613, 40.3381**, and the grayscale version is **24.3761, 25.6456, 27.9281**.

A 20% lighter version of the original color is **53.5365, 52.0236, 39.5676**, and **10.6713, 9.7780, 5.4626** is the 20% darker color. If you saturate the color by 10%, you get **24.4759, 22.3214, 12.7586**, and if you desaturate by 10%, it is **28.9778, 28.5076, 22.9450**.

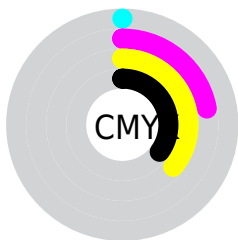
Distribution



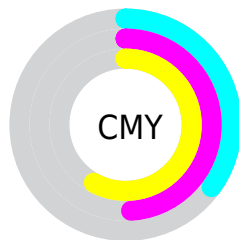
- Red (65%)
- Green (51%)
- Blue (42%)



- Red (65%)
- Yellow (56%)
- Blue (42%)



- Cyan (0%)
- Magenta (22%)
- Yellow (36%)
- Black (35%)





- Cyan (35%)
- Magenta (49%)
- Yellow (58%)

Brightness & Saturation Gradients


These gradients show how the XYZ color 26.5728, 25.2423, 17.3816 changes by changing the brightness by 10 percent. The first figure shows a shift by +10% for each color and the second figure -10%.

Similar to the brightness gradients but the following saturation gradients show a change of the XYZ color 26.5728, 25.2423, 17.3816 by changing the saturation by 10% instead.


 26.5728, 25.2423,
17.3816


 26.5728, 25.2423,
17.3816


277.7881,
279.0425, 249.4799


 17.3876, 16.2577,
10.3421


 53.6223, 52.0500,
39.7803


 10.6082, 9.7067,
5.5178


 72.2173, 70.6419,
55.9766

 5.8694, 5.2049,
2.4902

 94.6796, 93.2050,
76.0623

 2.8057, 2.3680,
0.8349

 121.3746,
120.1237, 100.4559

 1.0519, 0.8093,
0.0000

152.6676,
151.7824, 129.5759

 0.0000, 0.0000,
0.0000

188.9239,

188.5655, 163.8409

230.5090,
230.8574, 203.6693

■ 26.5728, 25.2423,
17.3816

■ 26.5728, 25.2423,
17.3816

■ 24.4759, 22.3214,
12.7586

■ 28.9778, 28.5076,
22.9450

■ 22.6714, 19.7295,
9.0216

■ 31.7018, 32.1251,
29.4962

■ 21.1449, 17.4550,
6.1127

■ 34.7575, 36.1067,
37.0809

■ 19.8798, 15.4841,
3.9664

■ 38.1564, 40.4627,
45.7418

■ 18.8574, 13.8021,
2.5074

■ 41.9093, 45.2028,
55.5189

■ 18.0541, 12.3914,
1.6355

■ 46.0265, 50.3365,
66.4504

■ 17.7713, 11.8854,
1.3575

■ 50.5180, 55.8730,
78.5726

■ 55.3932, 61.8209,
91.9200

■ 60.2885, 68.0398,
104.5632

Harmonies

Analogous

The Analogous color harmony consists of three colors that are next to each other on the color wheel.



28.4400, 25.2423, 21.4462



26.5728, 25.2423, 17.3816



24.1126, 25.2423, 15.9453

Triad

The Triadic color harmony groups three colors that are evenly spaced from another and form a triangle on the color wheel.



26.5728, 25.2423, 17.3816



19.5239, 25.2423, 27.1414



26.3503, 25.2423, 41.3469

Complementary

The Complementary color scheme is a pair of colors which are on the opposite of each other on the color wheel.



26.5728, 25.2423, 17.3816



23.0113, 25.8613, 40.3381

Split Complementary

Split-complementary colors differ from the complementary color scheme. The scheme consists of three colors, the original color and two neighbors of the complement color.



23.8719, 25.2423, 43.5664



26.5728, 25.2423, 17.3816



20.0338, 25.2423, 34.5617

Square

The Square scheme is like the rectangle color scheme, but the four colors are evenly spaced on the color wheel.



26.5728, 25.2423, 17.3816



20.1407, 25.2423, 20.9443



21.5840, 25.2423, 40.8961



28.3055, 25.2423, 35.2617

Rectangle

The Rectangle color scheme consists of four colors that form a rectangle on the color wheel.



26.5728, 25.2423, 17.3816



22.5027, 25.2423, 16.4425



21.5840, 25.2423, 40.8961



25.5457, 25.2423, 42.6117

Sweetspot

The Sweet Spot groups the original color and five complimentary colors.



26.5734, 25.2435, 17.3821



59.2883, 60.8235, 59.0133



26.2282, 20.7447, 29.0074



13.1107, 13.4063, 12.8176



80.6108, 84.8088, 92.3568



14.7206, 15.4872, 16.8656

Same Dimension

The Same Dimension uses a secret algorithm to generate beautiful new colors.



26.5734, 25.2435, 17.3821



44.5971, 41.0503, 24.4921



31.1610, 34.4187, 18.9113



7.7581, 7.9963, 7.9238



13.6432, 9.1837, 1.0536



0.3816, 0.3227, 0.0422

Inverse Universe

The Inverse Universe completely reimagines the original color for something new.



23.0113, 25.8613, 40.3381



37.2660, 42.3026, 71.6764



19.0560, 17.9507, 39.0196



7.5024, 8.0416, 9.5751



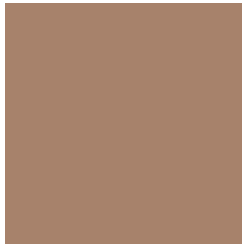
9.0952, 9.6506, 29.3589



0.2685, 0.3291, 0.7300

Previews

White Background



This preview shows how the XYZ color 26.5728, 25.2423, 17.3816 looks on a white background.

Color Contrast Check

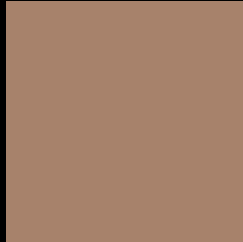
Large Text (above 18pt) WCAG AA ✓ Pass

Any Text WCAG AA × Fail

Large Text (above 18pt) WCAG AAA × Fail

Any Text WCAG AAA × Fail

Black Background



This preview shows how the XYZ color 26.5728, 25.2423, 17.3816 looks on a black background.

Color Contrast Check

Large Text (above 18pt) WCAG AA ✓ Pass

Any Text WCAG AA ✓ Pass

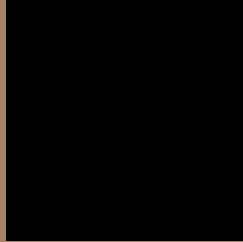
Large Text (above 18pt) WCAG AAA ✓ Pass

Any Text WCAG AAA × Fail

If you want to check with other color combinations, try the [Color Contrast Checker](#).

XYZ 26.5728, 25.2423, 17.3816

Background



This preview shows how black text looks on a background with the XYZ color 26.5728, 25.2423, 17.3816.



This preview shows how white text looks on a background with the XYZ color 26.5728, 25.2423,

Color Blindness Simulation

Color vision deficiency is a very complex topic, and I could not describe the different causes any better than Wikipedia does, so if you want to learn more, you should check out their [article about color blindness](#).

Dichromacy



Original Color

26.5728, 25.2423, 17.3816

Protanopia

23.8118, 25.4356, 18.6935

Deuteranopia

25.8054, 25.2454, 17.4227



Tritanopia

28.4824, 25.2453, 26.6642

Trichromacy



Original Color

26.5728, 25.2423, 17.3816

Protanomaly

24.8049, 25.3238, 18.3325

Deuteranomaly

26.0800, 25.1866, 17.3969

Tritanomaly

27.6532, 25.0944, 22.7883

Monochromacy



Original Color

26.5728, 25.2423, 17.3816

Achromatopsia

24.1572, 25.4152, 27.6772

Achromatomaly

24.8892, 25.2498, 23.6406

CSS Examples

Text

The CSS property to change the color of the text to XYZ 26.5728, 25.2423, 17.3816 is called "color". The color property can be set on classes, ids or directly on the HTML element.

This example shows how text in the color `rgb(167, 130, 107)` looks like.

```
.text, #text, p{  
    color:rgb(167, 130, 107)  
}
```

If you want to add a text shadow in that color use the text-shadow property, you can generate a text shadow directly with our [CSS Text Shadow Generator](#).

Here you see how black text with a 4 pixel rgb(167, 130, 107) colored shadow looks like.

```
.shadow{ text-shadow: 4px 4px 2px rgb(167, 130, 107) }
```

Border

The CSS property to change the border of an element to XYZ 26.5728, 25.2423, 17.3816 is called "border". The border property can be set on classes, ids or directly on the HTML element.

This example shows the color as border, it can be applied via the CSS property "border" or "border-color".

```
.border, #border, table{ border:4px solid rgb(167, 130, 107) }
```


If only the border color should be changed use the property `border-color`.

```
.border{ border-color:rgb(167, 130, 107) }
```

If you want to add a box shadow in that color use:

Here you see how a box with a 4 pixel `rgb(167, 130, 107)` colored shadow looks like.

```
.boxshadow{ -moz-box-shadow:4px 4px 4px 4px rgb(167, 130, 107); -webkit-box-shadow:4px 4px 4px 4px rgb(167, 130, 107); box-shadow:4px 4px 4px 4px rgb(167, 130, 107) }
```

Background

The CSS property to change the background color of an element to XYZ 26.5728, 25.2423, 17.3816 is called "background". The background property can be set on classes, ids or directly on the HTML element.

```
.background, #background, body{  
background: rgb(167, 130, 107) }
```

If only the background color should be changed can be used:

```
.background{ background-color: rgb(167,  
130, 107) }
```

This example shows the color as background, it is applied via the CSS property "background".

To optimize and compress your CSS code, you can use our [online CSS compressor and optimizer](#) based on csstidy. If you want to create a linear or radial gradient as background or border, check our [CSS Gradient Generator](#).

Hey! You found this booklet interesting? Support Converting Colors with the new Membership Option!

The pro membership hides all ads, plus gives you double the colors in the color bucket, and more awesome pro features!

[Learn more, Memberships starting at \\$2.50/m!](#)

**Follow me
on Twitter!**

@ConvertingColor