

Converting Colors

XYZ(26.7906, 24.1173, 12.6943)

Have a look what the booklet for
XYZ(26.7906, 24.1173, 12.6943)
contains.

XYZ(26.7906, 24.1173, 12.6943)	3
<i>Conversions</i>	4
<i>Details</i>	6
<i>Harmonies</i>	12
<i>Previews</i>	24
<i>Color Blindness Simulation</i>	28
<i>CSS Examples</i>	31

Color

**XYZ(26.7906, 24.1173,
12.6943)**

Conversions

Conversions Part 1

Format	Color
Hex	B07B59
RGB	176, 123, 89
RGB Percent	69%, 48%, 35%
CMY	0.3098, 0.5176, 0.6510
CMYK	0.00, 0.30, 0.49, 0.31
HSL	23°, 36%, 52%
HSV	23°, 49%, 69%
XYZ	26.7906, 24.1173, 12.6943
YIQ	134.9710, 42.5020, 0.6620

Conversions

Conversions Part 2

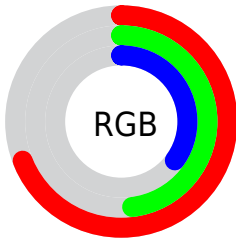
Format	Color
R _Y B	176, 145, 89
Decimal	11565913
CIE Lab	56.21, 16.60, 26.79
CIE LCh	56, 31.516, 58.208
Yxy	24.1173, 0.4212, 0.3792
Android (android.graphics.Color)	4289755993 (0xFFB07B59)
YUV	134.9710, -22.6637, 35.9824
Hunter-Lab	49.1094, 11.4356, 19.0507

Details

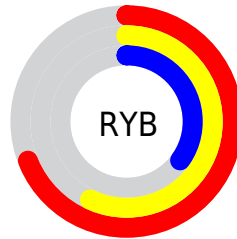
The XYZ color **26.7906, 24.1173, 12.6943** is a dark color, and the websafe version is hex **996633**. A complement of this color would be **21.6288, 24.6033, 44.6830**, and the grayscale version is **23.0893, 24.2917, 26.4537**.

A 20% lighter version of the original color is **54.1172, 50.4072, 31.3034**, and **10.7700, 9.1369, 3.4815** is the 20% darker color. If you saturate the color by 10%, you get **24.8802, 21.3413, 8.8369**, and if you desaturate by 10%, it is **29.0246, 27.2577, 17.5317**.

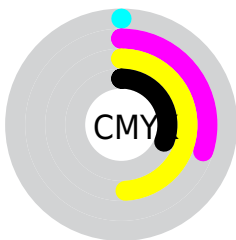
Distribution



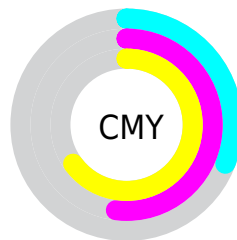
- Red (69%)
- Green (48%)
- Blue (35%)



- Red (69%)
- Yellow (57%)
- Blue (35%)



- Cyan (0%)
- Magenta (30%)
- Yellow (49%)
- Black (31%)





- Cyan (31%)
- Magenta (52%)
- Yellow (65%)

Brightness & Saturation Gradients


These gradients show how the XYZ color 26.7906, 24.1173, 12.6943 changes by changing the brightness by 10 percent. The first figure shows a shift by +10% for each color and the second figure -10%.


Similar to the brightness gradients but the following saturation gradients show a change of the XYZ color 26.7906, 24.1173, 12.6943 by changing the saturation by 10% instead.

 26.7906, 24.1173,
12.6943

 26.7906, 24.1173,
12.6943


278.8279,
273.4130, 220.0877


 17.5518, 15.4207,
7.0901


 53.9699, 50.2215,
31.4366


 10.7264, 9.1151,
3.4392


 72.6412, 68.3979,
45.4118


 5.9491, 4.8164,
1.3231


 95.1872, 90.5030,
63.0144

 2.8545, 2.1399,
0.0806

 121.9735,
116.9213, 84.6629

 1.0773, 0.6869,
0.0000

 153.3654,
148.0370, 110.7760

 0.0060, 0.0000,
0.0000

189.7282,

 0.0000, 0.0000,

184.2345, 141.7721

0.0000

231.4272,
225.8984, 178.0698

■ 26.7906, 24.1173,
12.6943

■ 26.7906, 24.1173,
12.6943

■ 24.8802, 21.3413,
8.8369

■ 29.0246, 27.2577,
17.5317

■ 23.2741, 18.9116,
5.8892

■ 31.5963, 30.7725,
23.4100

■ 21.9535, 16.8139,
3.7736

■ 34.5213, 34.6757,
30.3866

■ 20.8961, 15.0308,
2.3983

■ 37.8133, 38.9792,
38.5145

■ 20.0627, 13.5379,
1.5844

■ 41.4855, 43.6947,
47.8430

■ 20.0196, 13.4605,
1.5430

■ 45.5502, 48.8333,
58.4186

■ 50.0193, 54.4054,
70.2854

■ 54.9041, 60.4214,
83.4852

■ 60.2153, 66.8911,
98.0580

Harmonies

Analogous

The Analogous color harmony consists of three colors that are next to each other on the color wheel.



29.6232, 24.1173, 17.9159



26.7906, 24.1173, 12.6943



23.1412, 24.1173, 10.9445

Triad

The Triadic color harmony groups three colors that are evenly spaced from another and form a triangle on the color wheel.



26.7906, 24.1173, 12.6943



16.6433, 24.1173, 25.6411



26.3744, 24.1173, 48.0466

Complementary

The Complementary color scheme is a pair of colors which are on the opposite of each other on the color wheel.



26.7906, 24.1173, 12.6943



21.6288, 24.6033, 44.6830

Split Complementary

Split-complementary colors differ from the complementary color scheme. The scheme consists of three colors, the original color and two neighbors of the complement color.



22.7058, 24.1173, 51.6623



26.7906, 24.1173, 12.6943



17.3175, 24.1173, 36.8595

Square

The Square scheme is like the rectangle color scheme, but the four colors are evenly spaced on the color wheel.



26.7906, 24.1173, 12.6943



17.4987, 24.1173, 17.0919



19.4464, 24.1173, 47.1199



29.3657, 24.1173, 38.2299

Rectangle

The Rectangle color scheme consists of four colors that form a rectangle on the color wheel.



26.7906, 24.1173, 12.6943



20.8149, 24.1173, 11.5056



19.4464, 24.1173, 47.1199



25.1683, 24.1173, 50.1252

Sweetspot

The Sweet Spot groups the original color and five complimentary colors.



26.7912, 24.1185, 12.6948



65.0170, 66.0546, 60.9973



26.4084, 18.3476, 27.9975



13.8300, 13.9736, 12.5803



84.5950, 89.0005, 96.9216



16.2198, 17.0645, 18.5832

Same Dimension

The Same Dimension uses a secret algorithm to generate beautiful new colors.



26.7912, 24.1185, 12.6948



44.9341, 38.4234, 15.6602



33.3166, 37.1692, 14.8699



8.7597, 9.0320, 8.9342



14.7423, 9.9832, 1.1499



0.5215, 0.4294, 0.0554

Inverse Universe

The Inverse Universe completely reimagines the original color for something new.



21.6288, 24.6033, 44.6830



34.4772, 39.3470, 80.2729



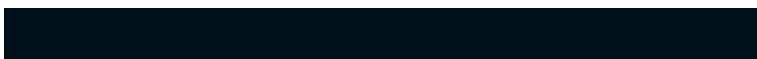
16.4326, 14.2108, 42.9509



8.4583, 9.0627, 10.8098



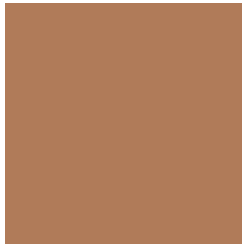
9.6816, 10.1637, 31.5885



0.3594, 0.4293, 1.0122

Previews

White Background



This preview shows how the XYZ color 26.7906, 24.1173, 12.6943 looks on a white background.

Color Contrast Check

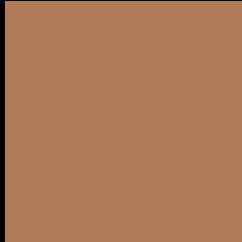
Large Text (above 18pt) WCAG AA ✓ Pass

Any Text WCAG AA × Fail

Large Text (above 18pt) WCAG AAA × Fail

Any Text WCAG AAA × Fail

Black Background



This preview shows how the XYZ color 26.7906, 24.1173, 12.6943 looks on a black background.

Color Contrast Check

Large Text (above 18pt) WCAG AA ✓ Pass

Any Text WCAG AA ✓ Pass

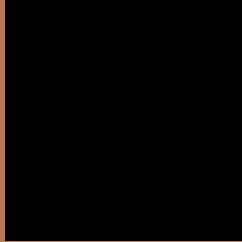
Large Text (above 18pt) WCAG AAA ✓ Pass

Any Text WCAG AAA × Fail

If you want to check with other color combinations, try the [Color Contrast Checker](#).

XYZ 26.7906, 24.1173, 12.6943

Background



This preview shows how black text looks on a background with the XYZ color 26.7906, 24.1173, 12.6943.



This preview shows how white text looks on a background with the XYZ color 26.7906, 24.1173,

Color Blindness Simulation

Color vision deficiency is a very complex topic, and I could not describe the different causes any better than Wikipedia does, so if you want to learn more, you should check out their [article about color blindness](#).

Dichromacy



Original Color

26.7906, 24.1173, 12.6943

Protanopia

22.5384, 24.2471, 14.0819

Deuteranopia

24.5120, 24.0865, 12.5898



Tritanopia

28.8996, 24.0729, 23.2020

Trichromacy



Original Color

26.7906, 24.1173, 12.6943

Protanomaly

23.9527, 24.1734, 13.5287

Deuteranomaly

25.2872, 24.0988, 12.5513

Tritanomaly

28.0572, 24.0902, 18.7939

Monochromacy



Original Color

26.7906, 24.1173, 12.6943

Achromatopsia

23.0288, 24.2281, 26.3844

Achromatomaly

23.9640, 24.0246, 20.5137

CSS Examples

Text

The CSS property to change the color of the text to XYZ 26.7906, 24.1173, 12.6943 is called "color". The color property can be set on classes, ids or directly on the HTML element.

This example shows how text in the color `rgb(176, 123, 89)` looks like.

```
.text, #text, p{  
    color:rgb(176, 123, 89)  
}
```

If you want to add a text shadow in that color use the text-shadow property, you can generate a text shadow directly with our [CSS Text Shadow Generator](#).

Here you see how black text with a 4 pixel rgb(176, 123, 89) colored shadow looks like.

```
.shadow{ text-shadow: 4px 4px 2px rgb(176, 123, 89) }
```

Border

The CSS property to change the border of an element to XYZ 26.7906, 24.1173, 12.6943 is called "border". The border property can be set on classes, ids or directly on the HTML element.

This example shows the color as border, it can be applied via the CSS property "border" or "border-color".

```
.border, #border, table{ border:4px solid rgb(176, 123, 89) }
```


If only the border color should be changed use the property border-color.

```
.border{ border-color:rgb(176, 123, 89) }
```

If you want to add a box shadow in that color use:

Here you see how a box with a 4 pixel rgb(176, 123, 89) colored shadow looks like.

```
.boxshadow{ -moz-box-shadow:4px 4px 4px  
4px rgb(176, 123, 89); -webkit-box-  
shadow:4px 4px 4px 4px rgb(176, 123, 89);  
box-shadow:4px 4px 4px 4px rgb(176, 123,  
89) }
```

Background

The CSS property to change the background color of an element to XYZ 26.7906, 24.1173, 12.6943 is called "background". The background property can be set on classes, ids or directly on the HTML element.

```
.background, #background, body{  
background: rgb(176, 123, 89) }
```

If only the background color should be changed can be used:

```
.background{ background-color: rgb(176,  
123, 89) }
```

This example shows the color as background, it is applied via the CSS property "background".

To optimize and compress your CSS code, you can use our [online CSS compressor and optimizer](#) based on csstidy. If you want to create a linear or radial gradient as background or border, check our [CSS Gradient Generator](#).

Hey! You found this booklet interesting? Support Converting Colors with the new Membership Option!

The pro membership hides all ads, plus gives you double the colors in the color bucket, and more awesome pro features!

[Learn more, Memberships starting at \\$2.50/m!](#)

**Follow me
on Twitter!**

@ConvertingColor