

Converting Colors

XYZ(26.8421, 26.1249, 20.4575)

Have a look what the booklet for
XYZ(26.8421, 26.1249, 20.4575)
contains.

XYZ(26.8402, 26.1211, 20.4569)	3
<i>Conversions</i>	4
<i>Details</i>	6
<i>Harmonies</i>	12
<i>Previews</i>	24
<i>Color Blindness Simulation</i>	28
<i>CSS Examples</i>	31

Color

**XYZ(26.8402, 26.1211,
20.4569)**

Conversions

Conversions Part 1

Format	Color
Hex	A38675
RGB	163, 134, 117
RGB Percent	64%, 53%, 46%
CMY	0.3608, 0.4745, 0.5412
CMYK	0.00, 0.18, 0.28, 0.36
HSL	22°, 20%, 55%
HSV	22°, 28%, 64%
XYZ	26.8402, 26.1211, 20.4569
YIQ	140.7330, 22.7410, 0.8610

Conversions

Conversions Part 2

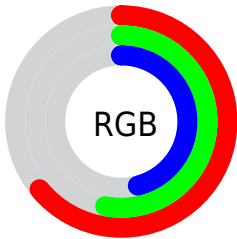
Format	Color
R_{YB}	163, 144, 117
Decimal	10716789
CIE _{Lab}	58.15, 8.41, 13.30
CIE _{LCh}	58, 15.738, 57.679
Yxy	26.1211, 0.3656, 0.3558
Android (android.graphics.Color)	4288906869 (0xFFA38675)
YUV	140.7330, -11.7004, 19.5282
Hunter-Lab	51.1088, 4.3003, 12.0446

Details

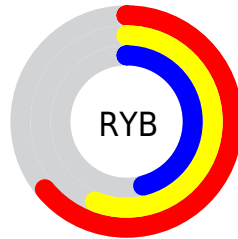
The XYZ color **26.8402, 26.1211, 20.4569** is a dark color, and the websafe version is hex **CC9999**. A complement of this color would be **24.2255, 26.9831, 38.5817**, and the grayscale version is **25.2516, 26.5666, 28.9310**.

A 20% lighter version of the original color is **54.1452, 53.4653, 45.0022**, and **10.6749, 10.0853, 7.0143** is the 20% darker color. If you saturate the color by 10%, you get **24.6124, 23.0679, 15.3906**, and if you desaturate by 10%, it is **29.3743, 29.5195, 26.4492**.

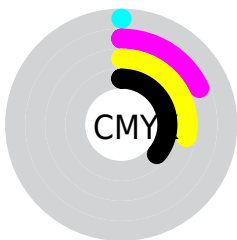
Distribution



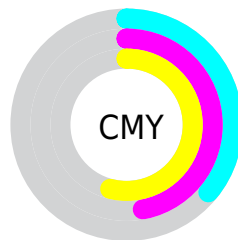
- Red (64%)
- Green (53%)
- Blue (46%)



- Red (64%)
- Yellow (56%)
- Blue (46%)



- Cyan (0%)
- Magenta (18%)
- Yellow (28%)
- Black (36%)



- Cyan (36%)
- Magenta (47%)
- Yellow (54%)

Brightness & Saturation Gradients

These gradients show how the XYZ color 26.8402, 26.1211, 20.4569 changes by changing the brightness by 10 percent. The first figure shows a shift by +10% for each color and the second figure -10%.

Similar to the brightness gradients but the following saturation gradients show a change of the XYZ color 26.8402, 26.1211, 20.4569 by changing the saturation by 10% instead.

■ 26.8402, 26.1211,
20.4569

■ 26.8402, 26.1211,
20.4569

279.0642,
283.3760, 267.0635

■ 17.5892, 16.9143,
12.5402

■ 54.0490, 53.4702,
45.0509

■ 10.7534, 10.1734,
6.9857

■ 72.7376, 72.3813,
62.5653

■ 5.9673, 5.5141,
3.3749

■ 95.3027, 95.2960,
84.1160

■ 2.8657, 2.5519,
1.2891

122.1097,
122.5985, 110.1216

■ 1.0831, 0.9026,
0.0528

153.5241,
154.6734, 141.0006

■ 0.0109, 0.0000,
0.0000

189.9110,

■ 0.0000, 0.0000,

191.9051, 177.1716

0.0000

231.6360,
234.6778, 219.0531

■ 26.8402, 26.1211,
20.4569

■ 26.8402, 26.1211,
20.4569

■ 24.6124, 23.0679,
15.3906

■ 29.3743, 29.5195,
26.4492

■ 22.6762, 20.3449,
11.2019

■ 32.2244, 33.2702,
33.4094

■ 21.0189, 17.9415,
7.8403

■ 35.4024, 37.3846,
41.3789

■ 19.6256, 15.8447,
5.2494

■ 38.9187, 41.8725,
50.3960

■ 18.4802, 14.0410,
3.3656

■ 42.7834, 46.7433,
60.4971

■ 17.5639, 12.5151,
2.1151

■ 47.0062, 52.0061,
71.7168

■ 16.8472, 11.2469,
1.3662

■ 51.5963, 57.6696,
84.0881

■ 16.7333, 11.0447,
1.2499

■ 56.5625, 63.7423,
97.6429

■ 60.4806, 69.6592,
104.8657

Harmonies

Analogous

The Analogous color harmony consists of three colors that are next to each other on the color wheel.



28.2187, 26.1211, 23.8362



26.8402, 26.1211, 20.4569



24.9761, 26.1211, 19.1848

Triad

The Triadic color harmony groups three colors that are evenly spaced from another and form a triangle on the color wheel.



26.8402, 26.1211, 20.4569



21.3403, 26.1211, 28.0182



26.5702, 26.1211, 38.7934

Complementary

The Complementary color scheme is a pair of colors which are on the opposite of each other on the color wheel.



26.8402, 26.1211, 20.4569



24.2255, 26.9831, 38.5817

Split Complementary

Split-complementary colors differ from the complementary color scheme. The scheme consists of three colors, the original color and two neighbors of the complement color.



24.6791, 26.1211, 40.2796



26.8402, 26.1211, 20.4569



21.7192, 26.1211, 33.6046

Square

The Square scheme is like the rectangle color scheme, but the four colors are evenly spaced on the color wheel.



26.8402, 26.1211, 20.4569



21.8553, 26.1211, 23.1873



22.9177, 26.1211, 38.2726



28.0572, 26.1211, 34.4347

Rectangle

The Rectangle color scheme consists of four colors that form a rectangle on the color wheel.



26.8402, 26.1211, 20.4569



23.7302, 26.1211, 19.5621



22.9177, 26.1211, 38.2726



25.9578, 26.1211, 39.6680

Sweetspot

The Sweet Spot groups the original color and five complimentary colors.



26.8409, 26.1223, 20.4574



57.7503, 59.6350, 59.9297



26.6644, 22.5889, 30.2034



12.7955, 13.1652, 13.0274



78.6606, 82.7571, 90.1225



14.0027, 14.7319, 16.0430

Same Dimension

The Same Dimension uses a secret algorithm to generate beautiful new colors.



26.8409, 26.1223, 20.4574



45.4501, 43.2070, 30.6352



30.3496, 33.1398, 21.6270



7.2782, 7.4948, 7.4431



13.0454, 8.6647, 0.9849



0.3183, 0.2704, 0.0354

Inverse Universe

The Inverse Universe completely reimagines the original color for something new.



24.2255, 26.9831, 38.5817



39.9618, 45.0031, 68.6364



21.0468, 20.6256, 37.5221



7.0550, 7.5689, 8.9922



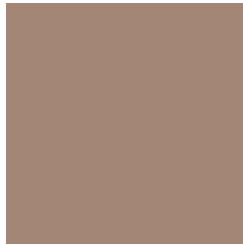
8.9324, 9.6441, 28.3205



0.2305, 0.2883, 0.6094

Previews

White Background



This preview shows how the XYZ color 26.8402, 26.1211, 20.4569 looks on a white background.

Color Contrast Check

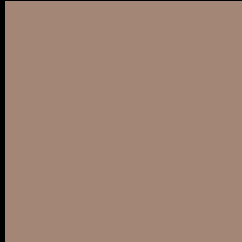
Large Text (above 18pt) WCAG AA ✓ Pass

Any Text WCAG AA × Fail

Large Text (above 18pt) WCAG AAA × Fail

Any Text WCAG AAA × Fail

Black Background



This preview shows how the XYZ color 26.8402, 26.1211, 20.4569 looks on a black background.

Color Contrast Check

Large Text (above 18pt) WCAG AA ✓ Pass

Any Text WCAG AA ✓ Pass

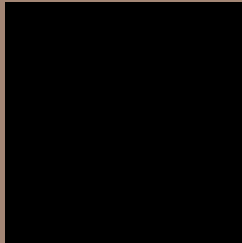
Large Text (above 18pt) WCAG AAA ✓ Pass

Any Text WCAG AAA × Fail

If you want to check with other color combinations, try the [Color Contrast Checker](#).

XYZ 26.8402, 26.1211, 20.4569

Background



This preview shows how black text looks on a background with the XYZ color 26.8402, 26.1211, 20.4569.



This preview shows how white text looks on a background with the XYZ color 26.8402, 26.1211,

Color Blindness Simulation

Color vision deficiency is a very complex topic, and I could not describe the different causes any better than Wikipedia does, so if you want to learn more, you should check out their [article about color blindness](#).

Dichromacy



Original Color

26.8402, 26.1211, 20.4569

Protanopia

24.8009, 26.3153, 21.5415

Deuteranopia

26.7752, 26.2937, 20.4936



Tritanopia

28.6499, 26.2627, 28.7585

Trichromacy



Original Color

26.8402, 26.1211, 20.4569

Protanomaly

25.5551, 26.2812, 21.1786

Deuteranomaly

26.7752, 26.2937, 20.4936

Tritanomaly

27.9332, 26.1678, 25.4084

Monochromacy



Original Color

26.8402, 26.1211, 20.4569

Achromatopsia

25.3171, 26.6356, 29.0061

Achromatomaly

25.6478, 26.2325, 25.5414

CSS Examples

Text

The CSS property to change the color of the text to XYZ 26.8402, 26.1211, 20.4569 is called "color". The color property can be set on classes, ids or directly on the HTML element.

This example shows how text in the color `rgb(163, 134, 117)` looks like.

```
.text, #text, p{  
    color:rgb(163, 134, 117)  
}
```

If you want to add a text shadow in that color use the text-shadow property, you can generate a text shadow directly with our [CSS Text Shadow Generator](#).

Here you see how black text with a 4 pixel rgb(163, 134, 117) colored shadow looks like.

```
.shadow{ text-shadow: 4px 4px 2px rgb(163, 134, 117) }
```

Border

The CSS property to change the border of an element to XYZ 26.8402, 26.1211, 20.4569 is called "border". The border property can be set on classes, ids or directly on the HTML element.

This example shows the color as border, it can be applied via the CSS property "border" or "border-color".

```
.border, #border, table{ border:4px solid rgb(163, 134, 117) }
```


If only the border color should be changed use the property `border-color`.

```
.border{ border-color:rgb(163, 134, 117) }
```

If you want to add a box shadow in that color use:

Here you see how a box with a 4 pixel `rgb(163, 134, 117)` colored shadow looks like.

```
.boxshadow{ -moz-box-shadow:4px 4px 4px  
4px rgb(163, 134, 117); -webkit-box-  
shadow:4px 4px 4px 4px rgb(163, 134, 117);  
box-shadow:4px 4px 4px 4px rgb(163, 134,  
117) }
```

Background

The CSS property to change the background color of an element to XYZ 26.8402, 26.1211, 20.4569 is called "background". The background property can be set on classes, ids or directly on the HTML element.

```
.background, #background, body{  
background: rgb(163, 134, 117) }
```

If only the background color should be changed can be used:

```
.background{ background-color: rgb(163,  
134, 117) }
```

This example shows the color as background, it is applied via the CSS property "background".

To optimize and compress your CSS code, you can use our [online CSS compressor and optimizer](#) based on csstidy. If you want to create a linear or radial gradient as background or border, check our [CSS Gradient Generator](#).

Hey! You found this booklet interesting? Support Converting Colors with the new Membership Option!

The pro membership hides all ads, plus gives you double the colors in the color bucket, and more awesome pro features!

[Learn more, Memberships starting at \\$2.50/m!](#)

**Follow me
on Twitter!**

@ConvertingColor