

Converting Colors

XYZ(26.9629, 26.2903, 14.9097)

Have a look what the booklet for
XYZ(26.9629, 26.2903, 14.9097)
contains.

XYZ(27.0450, 26.3483, 14.9696)	3
<i>Conversions</i>	4
<i>Details</i>	6
<i>Harmonies</i>	12
<i>Previews</i>	24
<i>Color Blindness Simulation</i>	28
<i>CSS Examples</i>	31

Color

**XYZ(27.0450, 26.3483,
14.9696)**

Conversions

Conversions Part 1

Format	Color
Hex	A98661
RGB	169, 134, 97
RGB Percent	66%, 53%, 38%
CMY	0.3373, 0.4745, 0.6196
CMYK	0.00, 0.21, 0.43, 0.34
HSL	31°, 30%, 52%
HSV	31°, 43%, 66%
XYZ	27.0450, 26.3483, 14.9696
YIQ	140.2470, 32.7370, -4.0870

Conversions

Conversions Part 2

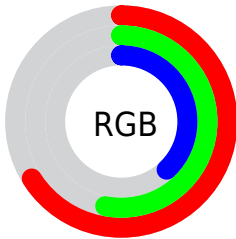
Format	Color
R_{YB}	165, 169, 97
Decimal	11109985
CIE _{Lab}	58.37, 8.32, 24.99
CIE _{LCh}	58, 26.343, 71.583
Yxy	26.3483, 0.3956, 0.3854
Android (android.graphics.Color)	4289300065 (0xFFA98661)
YUV	140.2470, -21.3208, 25.2164
Hunter-Lab	51.3306, 4.2193, 18.6406

Details

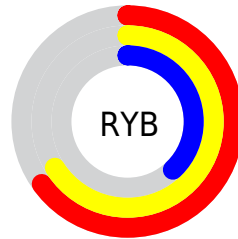
The XYZ color **27.0450, 26.3483, 14.9696** is a dark color, and the websafe version is hex **CC9966**. A complement of this color would be **20.3422, 21.9078, 40.6926**, and the grayscale version is **25.0954, 26.4023, 28.7521**.

A 20% lighter version of the original color is **54.4797, 53.8475, 35.5392**, and **10.8163, 10.2158, 4.4194** is the 20% darker color. If you saturate the color by 10%, you get **25.2480, 23.8838, 10.8884**, and if you desaturate by 10%, it is **29.0995, 29.0589, 19.9654**.

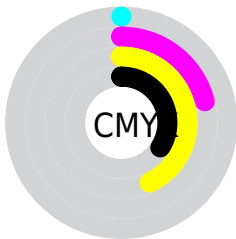
Distribution



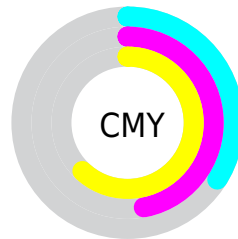
- Red (66%)
- Green (53%)
- Blue (38%)



- Red (65%)
- Yellow (66%)
- Blue (38%)



- Cyan (0%)
- Magenta (21%)
- Yellow (43%)
- Black (34%)



- Cyan (34%)
- Magenta (47%)
- Yellow (62%)

Brightness & Saturation Gradients

These gradients show how the XYZ color 27.0450, 26.3483, 14.9696 changes by changing the brightness by 10 percent. The first figure shows a shift by +10% for each color and the second figure -10%.

Similar to the brightness gradients but the following saturation gradients show a change of the XYZ color 27.0450, 26.3483, 14.9696 by changing the saturation by 10% instead.

■ 27.0450, 26.3483,
14.9696

■ 27.0450, 26.3483,
14.9696

280.0385,
284.4877, 234.8166

■ 17.7438, 17.0844,
8.6517

■ 54.3754, 53.8363,
35.5414

■ 10.8648, 10.2947,
4.4210

■ 73.1354, 72.8292,
50.6323

■ 6.0426, 5.5948,
1.8590

■ 95.7790, 95.8339,
69.4847

■ 2.9119, 2.6003,
0.4665

■ 122.6715,
123.2347, 92.5170

■ 1.1073, 0.9268,
0.0000

154.1784,
155.4161, 120.1478

■ 0.0313, 0.0000,
0.0000

190.6649,

■ 0.0000, 0.0000,

192.7625, 152.7956

0.0000

232.4965,
235.6582, 190.8790

■ 27.0450, 26.3483,
14.9696

■ 27.0450, 26.3483,
14.9696

■ 25.2480, 23.8838,
10.8884

■ 29.0995, 29.0589,
19.9654

■ 23.6936, 21.6533,
7.6629

■ 31.4211, 32.0196,
25.9266

■ 22.3686, 19.6492,
5.2297

■ 34.0215, 35.2390,
32.9019

■ 21.2569, 17.8616,
3.5159

■ 36.9110, 38.7241,
40.9365

■ 20.3401, 16.2797,
2.4344

■ 40.0991, 42.4816,
50.0727

■ 19.7588, 15.2281,
1.8979

■ 43.5952, 46.5179,
60.3504

■ 47.4080, 50.8393,
71.8076

■ 51.5458, 55.4516,
84.4806

■ 56.0168, 60.3606,
98.4040

Harmonies

Analogous

The Analogous color harmony consists of three colors that are next to each other on the color wheel.



29.9513, 26.3483, 18.4803



27.0450, 26.3483, 14.9696



23.8239, 26.3483, 14.6188

Triad

The Triadic color harmony groups three colors that are evenly spaced from another and form a triangle on the color wheel.



27.0450, 26.3483, 14.9696



19.4686, 26.3483, 32.3878



29.3688, 26.3483, 44.0522

Complementary

The Complementary color scheme is a pair of colors which are on the opposite of each other on the color wheel.



27.0450, 26.3483, 14.9696



20.3422, 21.9078, 40.6926

Split Complementary

Split-complementary colors differ from the complementary color scheme. The scheme consists of three colors, the original color and two neighbors of the complement color.



26.3036, 26.3483, 49.7319



27.0450, 26.3483, 14.9696



20.7030, 26.3483, 42.0981

Square

The Square scheme is like the rectangle color scheme, but the four colors are evenly spaced on the color wheel.



27.0450, 26.3483, 14.9696



19.6301, 26.3483, 23.4571



23.1428, 26.3483, 48.9488



31.3700, 26.3483, 34.6458

Rectangle

The Rectangle color scheme consists of four colors that form a rectangle on the color wheel.



27.0450, 26.3483, 14.9696



21.9468, 26.3483, 16.1079



23.1428, 26.3483, 48.9488



28.4182, 26.3483, 46.5428

Sweetspot

The Sweet Spot groups the original color and five complimentary colors.



27.0457, 26.3495, 14.9701



60.6222, 62.7339, 58.0834



24.8707, 18.6782, 24.4850



12.9889, 13.3983, 12.0511



80.6108, 84.8088, 92.3568



14.7206, 15.4872, 16.8656

Same Dimension

The Same Dimension uses a secret algorithm to generate beautiful new colors.



27.0457, 26.3495, 14.9701



45.4256, 43.0656, 19.9546



32.7079, 37.6741, 16.8576



7.8379, 8.1560, 7.9504



14.7799, 11.4571, 1.4325



0.4105, 0.3806, 0.0518

Inverse Universe

The Inverse Universe completely reimagines the original color for something new.



20.3422, 21.9078, 40.6926



31.8328, 34.0616, 72.1219



16.3662, 13.9557, 39.3673



7.4215, 7.8799, 9.5482



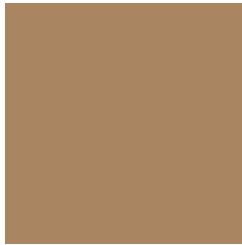
7.6475, 6.7552, 28.8763



0.2375, 0.2672, 0.7197

Previews

White Background



This preview shows how the XYZ color 27.0450, 26.3483, 14.9696 looks on a white background.

Color Contrast Check

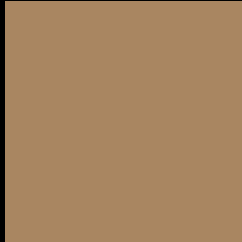
Large Text (above 18pt) WCAG AA ✓ Pass

Any Text WCAG AA × Fail

Large Text (above 18pt) WCAG AAA × Fail

Any Text WCAG AAA × Fail

Black Background



This preview shows how the XYZ color 27.0450, 26.3483, 14.9696 looks on a black background.

Color Contrast Check

Large Text (above 18pt) WCAG AA ✓ Pass

Any Text WCAG AA ✓ Pass

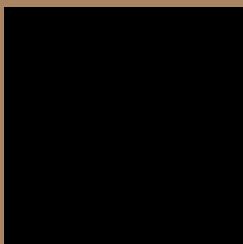
Large Text (above 18pt) WCAG AAA ✓ Pass

Any Text WCAG AAA × Fail

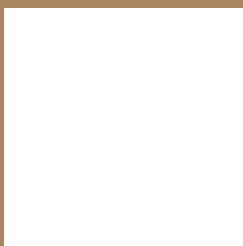
If you want to check with other color combinations, try the [Color Contrast Checker](#).

XYZ 27.0450, 26.3483, 14.9696

Background



This preview shows how black text looks on a background with the XYZ color 27.0450, 26.3483, 14.9696.



This preview shows how white text looks on a background with the XYZ color 27.0450, 26.3483,

Color Blindness Simulation

Color vision deficiency is a very complex topic, and I could not describe the different causes any better than Wikipedia does, so if you want to learn more, you should check out their [article about color blindness](#).

Dichromacy



Original Color

27.0450, 26.3483, 14.9696

Protanopia

24.6272, 26.3517, 15.8450

Deuteranopia

26.9701, 26.5158, 15.0059



Tritanopia

29.6713, 26.4197, 27.5804

Trichromacy



Original Color

27.0450, 26.3483, 14.9696

Protanomaly

25.4412, 26.3469, 15.5489

Deuteranomaly

26.9701, 26.5158, 15.0059

Tritanomaly

28.7047, 26.4333, 22.3281

Monochromacy



Original Color

27.0450, 26.3483, 14.9696

Achromatopsia

24.9269, 26.2251, 28.5591

Achromatomaly

25.4891, 26.2115, 22.7847

CSS Examples

Text

The CSS property to change the color of the text to XYZ 27.0450, 26.3483, 14.9696 is called "color". The color property can be set on classes, ids or directly on the HTML element.

This example shows how text in the color `rgb(169, 134, 97)` looks like.

```
.text, #text, p{  
    color:rgb(169, 134, 97)  
}
```

If you want to add a text shadow in that color use the text-shadow property, you can generate a text shadow directly with our [CSS Text Shadow Generator](#).

Here you see how black text with a 4 pixel rgb(169, 134, 97) colored shadow looks like.

```
.shadow{ text-shadow: 4px 4px 2px rgb(169, 134, 97) }
```

Border

The CSS property to change the border of an element to XYZ 27.0450, 26.3483, 14.9696 is called "border". The border property can be set on classes, ids or directly on the HTML element.

This example shows the color as border, it can be applied via the CSS property "border" or "border-color".

```
.border, #border, table{ border:4px solid rgb(169, 134, 97) }
```


If only the border color should be changed use the property `border-color`.

```
.border{ border-color:rgb(169, 134, 97) }
```

If you want to add a box shadow in that color use:

Here you see how a box with a 4 pixel `rgb(169, 134, 97)` colored shadow looks like.

```
.boxshadow{ -moz-box-shadow:4px 4px 4px  
4px rgb(169, 134, 97); -webkit-box-  
shadow:4px 4px 4px 4px rgb(169, 134, 97);  
box-shadow:4px 4px 4px 4px rgb(169, 134,  
97) }
```

Background

The CSS property to change the background color of an element to XYZ 27.0450, 26.3483, 14.9696 is called "background". The background property can be set on classes, ids or directly on the HTML element.

```
.background, #background, body{  
background: rgb(169, 134, 97) }
```

If only the background color should be changed can be used:

```
.background{ background-color: rgb(169,  
134, 97) }
```

This example shows the color as background, it is applied via the CSS property "background".

To optimize and compress your CSS code, you can use our [online CSS compressor and optimizer](#) based on csstidy. If you want to create a linear or radial gradient as background or border, check our [CSS Gradient Generator](#).

Hey! You found this booklet interesting? Support Converting Colors with the new Membership Option!

The pro membership hides all ads, plus gives you double the colors in the color bucket, and more awesome pro features!

[Learn more, Memberships starting at \\$2.50/m!](#)

**Follow me
on Twitter!**

@ConvertingColor