

Converting Colors

XYZ(27.0044, 24.8065, 11.9574)

Have a look what the booklet for
XYZ(27.0044, 24.8065, 11.9574)
contains.

XYZ(27.0050, 24.8077, 11.9594)	3
<i>Conversions</i>	4
<i>Details</i>	6
<i>Harmonies</i>	12
<i>Previews</i>	24
<i>Color Blindness Simulation</i>	28
<i>CSS Examples</i>	31

Color

**XYZ(27.0050, 24.8077,
11.9594)**

Conversions

Conversions Part 1

Format	Color
Hex	B07E55
RGB	176, 126, 85
RGB Percent	69%, 49%, 33%
CMY	0.3098, 0.5059, 0.6667
CMYK	0.00, 0.28, 0.52, 0.31
HSL	27°, 37%, 51%
HSV	27°, 52%, 69%
XYZ	27.0050, 24.8077, 11.9594
YIQ	136.2760, 42.9610, -2.1510

Conversions

Conversions Part 2

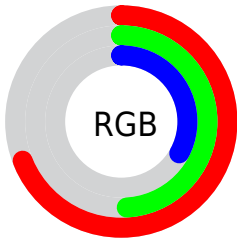
Format	Color
R_{YB}	176, 160, 85
Decimal	11566677
CIE _{Lab}	56.89, 14.53, 29.89
CIE _{LCh}	57, 33.234, 64.067
Yxy	24.8077, 0.4235, 0.3890
Android (android.graphics.Color)	4289756757 (0xFFB07E55)
YUV	136.2760, -25.2791, 34.8379
Hunter-Lab	49.8073, 9.6180, 20.6288

Details

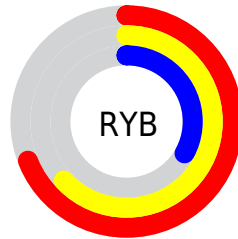
The XYZ color **27.0050, 24.8077, 11.9594** is a dark color, and the websafe version is hex **CC9966**. A complement of this color would be **20.2463, 22.3927, 44.3291**, and the grayscale version is **23.5864, 24.8147, 27.0232**.

A 20% lighter version of the original color is **54.4250, 51.4819, 29.9902**, and **10.9052, 9.5192, 3.1821** is the 20% darker color. If you saturate the color by 10%, you get **25.2137, 22.2084, 8.3313**, and if you desaturate by 10%, it is **29.0910, 27.7181, 16.5442**.

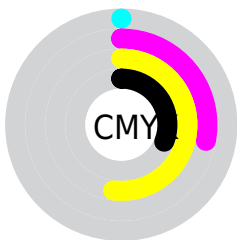
Distribution



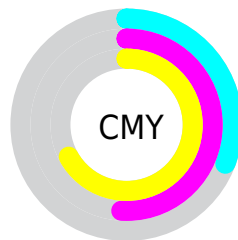
- Red (69%)
- Green (49%)
- Blue (33%)



- Red (69%)
- Yellow (63%)
- Blue (33%)



- Cyan (0%)
- Magenta (28%)
- Yellow (52%)
- Black (31%)



- Cyan (31%)
- Magenta (51%)
- Yellow (67%)

Brightness & Saturation Gradients

These gradients show how the XYZ color 27.0050, 24.8077, 11.9594 changes by changing the brightness by 10 percent. The first figure shows a shift by +10% for each color and the second figure -10%.

Similar to the brightness gradients but the following saturation gradients show a change of the XYZ color 27.0050, 24.8077, 11.9594 by changing the saturation by 10% instead.

■ 27.0050, 24.8077,
11.9594

■ 27.0050, 24.8077,
11.9594

279.8484,
276.8789, 215.1047

■ 17.7136, 15.9338,
6.5938

■ 54.3117, 51.3451,
30.0844

■ 10.8430, 9.4774,
3.1348

■ 73.0577, 69.7774,
43.6810

■ 6.0279, 5.0538,
1.1639

■ 95.6860, 92.1647,
60.8583

■ 2.9029, 2.2789,
0.0000

■ 122.5619,
118.8913, 82.0348

■ 1.1026, 0.7625,
0.0000

■ 154.0507,
150.3416, 107.6292

■ 0.0273, 0.0000,
0.0000

190.5178,

■ 0.0000, 0.0000,

186.9000, 138.0600

0.0000

232.3286,
228.9510, 173.7456

■ 27.0050, 24.8077,
11.9594

■ 27.0050, 24.8077,
11.9594

■ 25.2137, 22.2084,
8.3313

■ 29.0910, 27.7181,
16.5442

■ 23.6988, 19.9045,
5.5881

■ 31.4848, 30.9470,
22.1474

■ 22.4422, 17.8842,
3.6501

■ 34.2010, 34.5064,
28.8272

■ 21.4225, 16.1329,
2.4221

■ 37.2525, 38.4061,
36.6370

■ 20.7224, 14.8661,
1.7773

■ 40.6515, 42.6556,
45.6265

■ 44.4095, 47.2641,
55.8426

■ 48.5374, 52.2402,
67.3295

■ 53.0457, 57.5925,
80.1291

■ 57.9445, 63.3289,
94.2815

Harmonies

Analogous

The Analogous color harmony consists of three colors that are next to each other on the color wheel.



30.3365, 24.8077, 16.6976



27.0050, 24.8077, 11.9594



23.0522, 24.8077, 10.7784

Triad

The Triadic color harmony groups three colors that are evenly spaced from another and form a triangle on the color wheel.



27.0050, 24.8077, 11.9594



16.8750, 24.8077, 28.5600



28.0238, 24.8077, 48.9364

Complementary

The Complementary color scheme is a pair of colors which are on the opposite of each other on the color wheel.



27.0050, 24.8077, 11.9594



20.2463, 22.3927, 44.3291

Split Complementary

Split-complementary colors differ from the complementary color scheme. The scheme consists of three colors, the original color and two neighbors of the complement color.



24.1137, 24.8077, 54.5218



27.0050, 24.8077, 11.9594



17.9078, 24.8077, 40.8817

Square

The Square scheme is like the rectangle color scheme, but the four colors are evenly spaced on the color wheel.



27.0050, 24.8077, 11.9594



17.4696, 24.8077, 18.6818



20.4557, 24.8077, 51.2301



30.9687, 24.8077, 37.5086

Rectangle

The Rectangle color scheme consists of four colors that form a rectangle on the color wheel.



27.0050, 24.8077, 11.9594



20.6572, 24.8077, 11.7889



20.4557, 24.8077, 51.2301



26.7640, 24.8077, 51.6833

Sweetspot

The Sweet Spot groups the original color and five complimentary colors.



27.0056, 24.8089, 11.9599



64.9545, 66.3419, 59.7053



25.5297, 17.4780, 24.9683



13.8384, 14.0724, 12.3306



84.5950, 89.0005, 96.9216



16.2198, 17.0645, 18.5832

Same Dimension

The Same Dimension uses a secret algorithm to generate beautiful new colors.



27.0056, 24.8089, 11.9599



45.3209, 39.6701, 14.3303



34.1921, 39.1819, 14.3554



8.8012, 9.1148, 8.9480



15.2614, 11.0213, 1.3230



0.5387, 0.4638, 0.0611

Inverse Universe

The Inverse Universe completely reimagines the original color for something new.



20.2463, 22.3927, 44.3291



31.6875, 34.7706, 79.5366



15.2013, 12.3028, 42.6475



8.4160, 8.9782, 10.7957



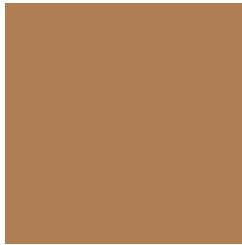
8.9246, 8.6496, 31.3362



0.3381, 0.3867, 1.0051

Previews

White Background



This preview shows how the XYZ color 27.0050, 24.8077, 11.9594 looks on a white background.

Color Contrast Check

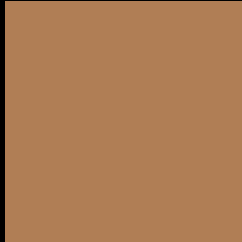
Large Text (above 18pt) WCAG AA ✓ Pass

Any Text WCAG AA × Fail

Large Text (above 18pt) WCAG AAA × Fail

Any Text WCAG AAA × Fail

Black Background



This preview shows how the XYZ color 27.0050, 24.8077, 11.9594 looks on a black background.

Color Contrast Check

Large Text (above 18pt) WCAG AA ✓ Pass

Any Text WCAG AA ✓ Pass

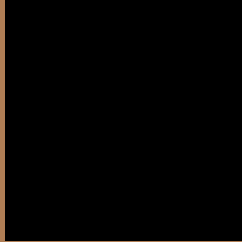
Large Text (above 18pt) WCAG AAA ✓ Pass

Any Text WCAG AAA × Fail

If you want to check with other color combinations, try the [Color Contrast Checker](#).

XYZ 27.0050, 24.8077, 11.9594

Background



This preview shows how black text looks on a background with the XYZ color 27.0050, 24.8077, 11.9594.



This preview shows how white text looks on a background with the XYZ color 27.0050, 24.8077,

Color Blindness Simulation

Color vision deficiency is a very complex topic, and I could not describe the different causes any better than Wikipedia does, so if you want to learn more, you should check out their [article about color blindness](#).

Dichromacy



Original Color

27.0050, 24.8077, 11.9594

Protanopia

23.1433, 25.0022, 13.0573

Deuteranopia

25.4424, 24.9797, 11.8681



Tritanopia

29.5681, 24.7479, 24.3375

Trichromacy



Original Color

27.0050, 24.8077, 11.9594

Protanomaly

24.4471, 24.8506, 12.7407

Deuteranomaly

26.0281, 24.8867, 11.8193

Tritanomaly

28.5872, 24.7177, 19.1839

Monochromacy



Original Color

27.0050, 24.8077, 11.9594

Achromatopsia

23.4014, 24.6201, 26.8113

Achromatomaly

24.2246, 24.3662, 20.2560

CSS Examples

Text

The CSS property to change the color of the text to XYZ 27.0050, 24.8077, 11.9594 is called "color". The color property can be set on classes, ids or directly on the HTML element.

This example shows how text in the color `rgb(176, 126, 85)` looks like.

```
.text, #text, p{  
    color:rgb(176, 126, 85)  
}
```

If you want to add a text shadow in that color use the text-shadow property, you can generate a text shadow directly with our [CSS Text Shadow Generator](#).

Here you see how black text with a 4 pixel rgb(176, 126, 85) colored shadow looks like.

```
.shadow{ text-shadow: 4px 4px 2px rgb(176, 126, 85) }
```

Border

The CSS property to change the border of an element to XYZ 27.0050, 24.8077, 11.9594 is called "border". The border property can be set on classes, ids or directly on the HTML element.

This example shows the color as border, it can be applied via the CSS property "border" or "border-color".

```
.border, #border, table{ border:4px solid rgb(176, 126, 85) }
```


If only the border color should be changed use the property border-color.

```
.border{ border-color:rgb(176, 126, 85) }
```

If you want to add a box shadow in that color use:

Here you see how a box with a 4 pixel rgb(176, 126, 85) colored shadow looks like.

```
.boxshadow{ -moz-box-shadow:4px 4px 4px  
4px rgb(176, 126, 85); -webkit-box-  
shadow:4px 4px 4px 4px rgb(176, 126, 85);  
box-shadow:4px 4px 4px 4px rgb(176, 126,  
85) }
```

Background

The CSS property to change the background color of an element to XYZ 27.0050, 24.8077, 11.9594 is called "background". The background property can be set on classes, ids or directly on the HTML element.

```
.background, #background, body{  
background: rgb(176, 126, 85) }
```

If only the background color should be changed can be used:

```
.background{ background-color: rgb(176,  
126, 85) }
```

This example shows the color as background, it is applied via the CSS property "background".

To optimize and compress your CSS code, you can use our [online CSS compressor and optimizer](#) based on csstidy. If you want to create a linear or radial gradient as background or border, check our [CSS Gradient Generator](#).

Hey! You found this booklet interesting? Support Converting Colors with the new Membership Option!

The pro membership hides all ads, plus gives you double the colors in the color bucket, and more awesome pro features!

[Learn more, Memberships starting at \\$2.50/m!](#)

**Follow me
on Twitter!**

@ConvertingColor