

Converting Colors

XYZ(27.0491, 25.6471, 15.0556)

Have a look what the booklet for
XYZ(27.0491, 25.6471, 15.0556)
contains.

XYZ(27.1155, 25.7724, 15.1007)	3
<i>Conversions</i>	4
<i>Details</i>	6
<i>Harmonies</i>	12
<i>Previews</i>	24
<i>Color Blindness Simulation</i>	28
<i>CSS Examples</i>	31

Color

**XYZ(27.1155, 25.7724,
15.1007)**

Conversions

Conversions Part 1

Format	Color
Hex	AB8362
RGB	171, 131, 98
RGB Percent	67%, 51%, 38%
CMY	0.3294, 0.4863, 0.6157
CMYK	0.00, 0.23, 0.43, 0.33
HSL	27°, 30%, 53%
HSV	27°, 43%, 67%
XYZ	27.1155, 25.7724, 15.1007
YIQ	139.1980, 34.4330, -1.7830

Conversions

Conversions Part 2

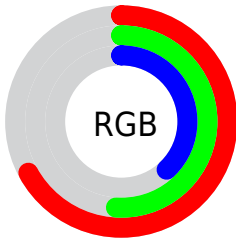
Format	Color
RYB	171, 158, 98
Decimal	11240290
CIELab	57.82, 10.96, 23.75
CIELCh	58, 26.159, 65.229
Yxy	25.7724, 0.3988, 0.3791
Android (android.graphics.Color)	4289430370 (0xFFAB8362)
YUV	139.1980, -20.3106, 27.8904
Hunter-Lab	50.7665, 6.4993, 17.9005

Details

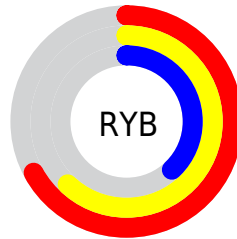
The XYZ color **27.1155, 25.7724, 15.1007** is a dark color, and the websafe version is hex **CC9966**. A complement of this color would be **21.4758, 23.7129, 41.9732**, and the grayscale version is **24.6840, 25.9695, 28.2808**.

A 20% lighter version of the original color is **54.5602, 52.9449, 35.7775**, and **10.9510, 10.0555, 4.4957** is the 20% darker color. If you saturate the color by 10%, you get **25.1909, 23.0803, 10.8924**, and if you desaturate by 10%, it is **29.3277, 28.7636, 20.2564**.

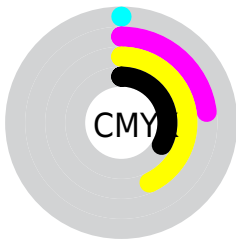
Distribution



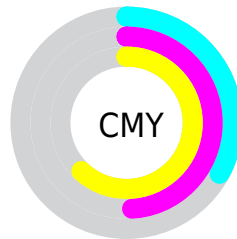
- Red (67%)
- Green (51%)
- Blue (38%)



- Red (67%)
- Yellow (62%)
- Blue (38%)



- Cyan (0%)
- Magenta (23%)
- Yellow (43%)
- Black (33%)



- Cyan (33%)
- Magenta (49%)
- Yellow (62%)

Brightness & Saturation Gradients

These gradients show how the XYZ color 27.1155, 25.7724, 15.1007 changes by changing the brightness by 10 percent. The first figure shows a shift by +10% for each color and the second figure -10%.

Similar to the brightness gradients but the following saturation gradients show a change of the XYZ color 27.1155, 25.7724, 15.1007 by changing the saturation by 10% instead.

■ 27.1155, 25.7724,
15.1007

■ 27.1155, 25.7724,
15.1007

280.3733,
281.6630, 235.6367

■ 17.7970, 16.6534,
8.7427

■ 54.4877, 52.9075,
35.7745

■ 10.9032, 9.9877,
4.4792

■ 73.2722, 71.6925,
50.9274

■ 6.0686, 5.3908,
1.8917

■ 95.9427, 94.4683,
69.8491

■ 2.9279, 2.4783,
0.4875

■ 122.8646,
121.6193, 92.9579

■ 1.1157, 0.8658,
0.0000

154.4033,
153.5298, 120.6726

■ 0.0382, 0.0000,
0.0000

190.9240,

■ 0.0000, 0.0000,

190.5844, 153.4115

0.0000

232.7922,
233.1673, 191.5934

■ 27.1155, 25.7724,
15.1007

■ 27.1155, 25.7724,
15.1007

■ 25.1909, 23.0803,
10.8924

■ 29.3277, 28.7636,
20.2564

■ 23.5380, 20.6731,
7.5706

■ 31.8385, 32.0600,
26.4122

■ 22.1417, 18.5409,
5.0696

■ 34.6608, 35.6721,
33.6186

■ 20.9848, 16.6715,
3.3137

■ 37.8058, 39.6088,
41.9223

■ 20.0468, 15.0512,
2.2127

■ 41.2845, 43.8785,
51.3672

■ 19.4702, 14.0093,
1.6779

■ 45.1069, 48.4895,
61.9947

■ 49.2830, 53.4494,
73.8441

■ 53.8219, 58.7660,
86.9530

■ 58.7328, 64.4464,
101.3572

Harmonies

Analogous

The Analogous color harmony consists of three colors that are next to each other on the color wheel.



29.7698, 25.7724, 19.2174



27.1155, 25.7724, 15.1007



23.9494, 25.7724, 14.1172

Triad

The Triadic color harmony groups three colors that are evenly spaced from another and form a triangle on the color wheel.



27.1155, 25.7724, 15.1007



18.9586, 25.7724, 29.6683



28.1488, 25.7724, 44.7012

Complementary

The Complementary color scheme is a pair of colors which are on the opposite of each other on the color wheel.



27.1155, 25.7724, 15.1007



21.4758, 23.7129, 41.9732

Split Complementary

Split-complementary colors differ from the complementary color scheme. The scheme consists of three colors, the original color and two neighbors of the complement color.



25.0506, 25.7724, 49.0597



27.1155, 25.7724, 15.1007



19.8848, 25.7724, 39.2727

Square

The Square scheme is like the rectangle color scheme, but the four colors are evenly spaced on the color wheel.



27.1155, 25.7724, 15.1007



19.4095, 25.7724, 21.4184



22.0507, 25.7724, 46.8866



30.4013, 25.7724, 35.9538

Rectangle

The Rectangle color scheme consists of four colors that form a rectangle on the color wheel.



27.1155, 25.7724, 15.1007



22.0100, 25.7724, 15.1394



22.0507, 25.7724, 46.8866



27.1623, 25.7724, 46.8045

Sweetspot

The Sweet Spot groups the original color and five complimentary colors.



27.1161, 25.7736, 15.1012



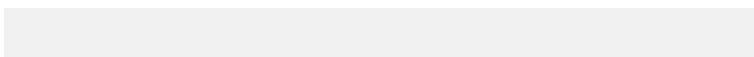
61.7880, 63.5226, 59.4621



25.7607, 19.2329, 26.4565



13.5264, 13.8450, 12.6076



82.5889, 86.8899, 94.6231



15.4596, 16.2647, 17.7123

Same Dimension

The Same Dimension uses a secret algorithm to generate beautiful new colors.



27.1161, 25.7736, 15.1012



45.3693, 41.6968, 20.0424



32.8821, 37.3056, 17.0232



8.2923, 8.5893, 8.4342



14.7290, 10.6635, 1.2820



0.4648, 0.4068, 0.0540

Inverse Universe

The Inverse Universe completely reimagines the original color for something new.



21.4758, 23.7129, 41.9732



33.9410, 37.5099, 74.4531



17.1050, 14.9713, 40.5162



7.9289, 8.4571, 10.1672



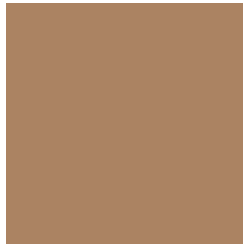
8.5912, 8.3162, 30.1969



0.2927, 0.3387, 0.8579

Previews

White Background



This preview shows how the XYZ color 27.1155, 25.7724, 15.1007 looks on a white background.

Color Contrast Check

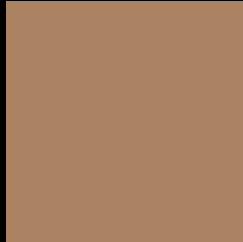
Large Text (above 18pt) WCAG AA ✓ Pass

Any Text WCAG AA × Fail

Large Text (above 18pt) WCAG AAA × Fail

Any Text WCAG AAA × Fail

Black Background



This preview shows how the XYZ color 27.1155, 25.7724, 15.1007 looks on a black background.

Color Contrast Check

Large Text (above 18pt) WCAG AA ✓ Pass

Any Text WCAG AA ✓ Pass

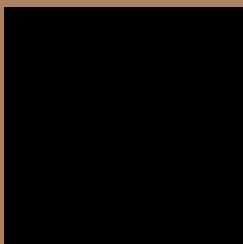
Large Text (above 18pt) WCAG AAA ✓ Pass

Any Text WCAG AAA × Fail

If you want to check with other color combinations, try the [Color Contrast Checker](#).

XYZ 27.1155, 25.7724, 15.1007

Background



This preview shows how black text looks on a background with the XYZ color 27.1155, 25.7724, 15.1007.



This preview shows how white text looks on a background with the XYZ color 27.1155, 25.7724,

Color Blindness Simulation

Color vision deficiency is a very complex topic, and I could not describe the different causes any better than Wikipedia does, so if you want to learn more, you should check out their [article about color blindness](#).

Dichromacy



Original Color

27.1155, 25.7724, 15.1007

Protanopia

24.1593, 25.8889, 16.0356

Deuteranopia

26.3180, 25.7639, 15.1411



Tritanopia

29.5840, 25.8132, 26.7158

Trichromacy



Original Color

27.1155, 25.7724, 15.1007

Protanomaly

25.2050, 25.7975, 15.7076

Deuteranomaly

26.6043, 25.7092, 15.1154

Tritanomaly

28.6876, 25.8422, 21.8884

Monochromacy



Original Color

27.1155, 25.7724, 15.1007

Achromatopsia

24.5403, 25.8183, 28.1161

Achromatomaly

25.2047, 25.6429, 22.6899

CSS Examples

Text

The CSS property to change the color of the text to XYZ 27.1155, 25.7724, 15.1007 is called "color". The color property can be set on classes, ids or directly on the HTML element.

This example shows how text in the color `rgb(171, 131, 98)` looks like.

```
.text, #text, p{  
    color:rgb(171, 131, 98)  
}
```

If you want to add a text shadow in that color use the text-shadow property, you can generate a text shadow directly with our [CSS Text Shadow Generator](#).

Here you see how black text with a 4 pixel rgb(171, 131, 98) colored shadow looks like.

```
.shadow{ text-shadow: 4px 4px 2px rgb(171, 131, 98) }
```

Border

The CSS property to change the border of an element to XYZ 27.1155, 25.7724, 15.1007 is called "border". The border property can be set on classes, ids or directly on the HTML element.

This example shows the color as border, it can be applied via the CSS property "border" or "border-color".

```
.border, #border, table{ border:4px solid rgb(171, 131, 98) }
```


If only the border color should be changed use the property `border-color`.

```
.border{ border-color:rgb(171, 131, 98) }
```

If you want to add a box shadow in that color use:

Here you see how a box with a 4 pixel `rgb(171, 131, 98)` colored shadow looks like.

```
.boxshadow{ -moz-box-shadow:4px 4px 4px  
4px rgb(171, 131, 98); -webkit-box-  
shadow:4px 4px 4px 4px rgb(171, 131, 98);  
box-shadow:4px 4px 4px 4px rgb(171, 131,  
98) }
```

Background

The CSS property to change the background color of an element to XYZ 27.1155, 25.7724, 15.1007 is called "background". The background property can be set on classes, ids or directly on the HTML element.

```
.background, #background, body{  
background: rgb(171, 131, 98) }
```

If only the background color should be changed can be used:

```
.background{ background-color: rgb(171,  
131, 98) }
```

This example shows the color as background, it is applied via the CSS property "background".

To optimize and compress your CSS code, you can use our [online CSS compressor and optimizer](#) based on csstidy. If you want to create a linear or radial gradient as background or border, check our [CSS Gradient Generator](#).

Hey! You found this booklet interesting? Support Converting Colors with the new Membership Option!

The pro membership hides all ads, plus gives you double the colors in the color bucket, and more awesome pro features!

[Learn more, Memberships starting at \\$2.50/m!](#)

**Follow me
on Twitter!**

@ConvertingColor