

Converting Colors

XYZ(27.2285, 24.7727, 10.1840)

Have a look what the booklet for
XYZ(27.2285, 24.7727, 10.1840)
contains.

XYZ(27.2285, 24.7727, 10.1840)	3
<i>Conversions</i>	4
<i>Details</i>	6
<i>Harmonies</i>	12
<i>Previews</i>	24
<i>Color Blindness Simulation</i>	28
<i>CSS Examples</i>	31

Color

**XYZ(27.2285, 24.7727,
10.1840)**

Conversions

Conversions Part 1

Format	Color
Hex	B37D4C
RGB	179, 125, 76
RGB Percent	70%, 49%, 30%
CMY	0.2980, 0.5098, 0.7020
CMYK	0.00, 0.30, 0.58, 0.30
HSL	29°, 40%, 50%
HSV	29°, 58%, 70%
XYZ	27.2285, 24.7727, 10.1840
YIQ	135.5600, 47.9130, -3.7910

Conversions

Conversions Part 2

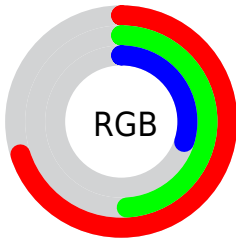
Format	Color
R_{YB}	179, 169, 76
Decimal	11763020
CIE Lab	56.85, 15.59, 34.82
CIE LCh	57, 38.152, 65.889
Yxy	24.7727, 0.4379, 0.3984
Android (android.graphics.Color)	4289953100 (0xFFB37D4C)
YUV	135.5600, -29.3631, 38.0969
Hunter-Lab	49.7722, 10.5494, 22.7091

Details

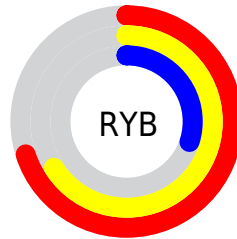
The XYZ color **27.2285, 24.7727, 10.1840** is a dark color, and the websafe version is hex **996633**. A complement of this color would be **19.0994, 20.7555, 45.6472**, and the grayscale version is **23.3314, 24.5465, 26.7311**.

A 20% lighter version of the original color is **54.6113, 51.3517, 26.7722**, and **10.9746, 9.4685, 2.4116** is the 20% darker color. If you saturate the color by 10%, you get **25.5584, 22.2938, 6.9726**, and if you desaturate by 10%, it is **29.1852, 27.5478, 14.3456**.

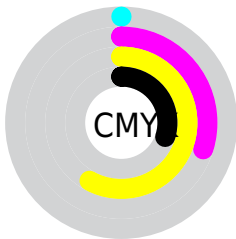
Distribution



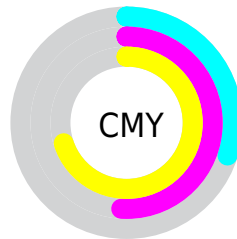
- Red (70%)
- Green (49%)
- Blue (30%)



- Red (70%)
- Yellow (66%)
- Blue (30%)



- Cyan (0%)
- Magenta (30%)
- Yellow (58%)
- Black (30%)



- Cyan (30%)
- Magenta (51%)
- Yellow (70%)

Brightness & Saturation Gradients

These gradients show how the XYZ color 27.2285, 24.7727, 10.1840 changes by changing the brightness by 10 percent. The first figure shows a shift by +10% for each color and the second figure -10%.

Similar to the brightness gradients but the following saturation gradients show a change of the XYZ color 27.2285, 24.7727, 10.1840 by changing the saturation by 10% instead.

■ 27.2285, 24.7727,
10.1840

■ 27.2285, 24.7727,
10.1840

280.9092,
276.7041, 202.5126

■ 17.8824, 15.9078,
5.4139

■ 54.6676, 51.2882,
26.7542

■ 10.9648, 9.4589,
2.4292

■ 73.4913, 69.7077,
39.3915

■ 6.1103, 5.0417,
0.8023

■ 96.2050, 92.0807,
55.4882

■ 2.9535, 2.2718,
0.0000

■ 123.1739,
118.7918, 75.4629

■ 1.1292, 0.7587,
0.0000

■ 154.7634,
150.2252, 99.7341

■ 0.0494, 0.0000,
0.0000

191.3389,

■ 0.0000, 0.0000,

186.7655, 128.7205

0.0000

233.2657,
228.7970, 162.8405

■ 27.2285, 24.7727,
10.1840

■ 27.2285, 24.7727,
10.1840

■ 25.5584, 22.2938,
6.9726

■ 29.1852, 27.5478,
14.3456

■ 24.1553, 20.0953,
4.6312

■ 31.4427, 30.6267,
19.5257

■ 22.9992, 18.1651,
3.0684

■ 34.0163, 34.0209,
25.7880

■ 22.0608, 16.4860,
2.1458

■ 36.9197, 37.7404,
33.1906

■ 21.8516, 16.1063,
1.9571

■ 40.1655, 41.7945,
41.7872

■ 43.7658, 46.1921,
51.6283

■ 47.7318, 50.9418,
62.7613

■ 52.0745, 56.0518,
75.2313

■ 56.8042, 61.5301,
89.0809

Harmonies

Analogous

The Analogous color harmony consists of three colors that are next to each other on the color wheel.



31.2054, 24.7727, 14.9783



27.2285, 24.7727, 10.1840



22.6762, 24.7727, 9.1674

Triad

The Triadic color harmony groups three colors that are evenly spaced from another and form a triangle on the color wheel.



27.2285, 24.7727, 10.1840



15.9990, 24.7727, 29.5742



28.9434, 24.7727, 52.1877

Complementary

The Complementary color scheme is a pair of colors which are on the opposite of each other on the color wheel.



27.2285, 24.7727, 10.1840



19.0994, 20.7555, 45.6472

Split Complementary

Split-complementary colors differ from the complementary color scheme. The scheme consists of three colors, the original color and two neighbors of the complement color.



24.4372, 24.7727, 59.5529



27.2285, 24.7727, 10.1840



17.2548, 24.7727, 44.0991

Square

The Square scheme is like the rectangle color scheme, but the four colors are evenly spaced on the color wheel.



27.2285, 24.7727, 10.1840



16.5489, 24.7727, 18.1269



20.2109, 24.7727, 56.2017



32.2798, 24.7727, 38.3113

Rectangle

The Rectangle color scheme consists of four colors that form a rectangle on the color wheel.



27.2285, 24.7727, 10.1840



19.9938, 24.7727, 10.3532



20.2109, 24.7727, 56.2017



27.4951, 24.7727, 55.6778

Sweetspot

The Sweet Spot groups the original color and five complimentary colors.



27.2291, 24.7739, 10.1845



66.2624, 67.7692, 59.8077



25.2671, 16.3897, 23.2810



14.4414, 14.7115, 12.6305



86.6293, 91.1408, 99.2523



17.0014, 17.8868, 19.4787

Same Dimension

The Same Dimension uses a secret algorithm to generate beautiful new colors.



27.2291, 24.7739, 10.1845



45.0702, 38.8465, 11.2425



35.3353, 40.9863, 12.8865



8.8187, 9.1499, 8.9538



15.5058, 11.5102, 1.4044



0.5464, 0.4792, 0.0637

Inverse Universe

The Inverse Universe completely reimagines the original color for something new.



19.0994, 20.7555, 45.6472



29.1074, 30.9384, 80.8188



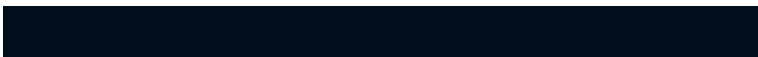
13.9447, 10.4461, 43.9289



8.3983, 8.9427, 10.7898



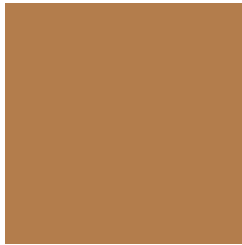
8.6336, 8.0676, 31.2392



0.3296, 0.3697, 1.0022

Previews

White Background



This preview shows how the XYZ color 27.2285, 24.7727, 10.1840 looks on a white background.

Color Contrast Check

Large Text (above 18pt) WCAG AA ✓ Pass

Any Text WCAG AA × Fail

Large Text (above 18pt) WCAG AAA × Fail

Any Text WCAG AAA × Fail

Black Background



This preview shows how the XYZ color 27.2285, 24.7727, 10.1840 looks on a black background.

Color Contrast Check

Large Text (above 18pt) WCAG AA ✓ Pass

Any Text WCAG AA ✓ Pass

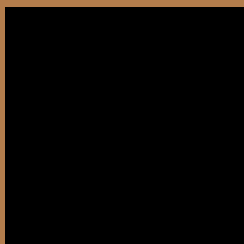
Large Text (above 18pt) WCAG AAA ✓ Pass

Any Text WCAG AAA × Fail

If you want to check with other color combinations, try the [Color Contrast Checker](#).

XYZ 27.2285, 24.7727, 10.1840

Background



This preview shows how black text looks on a background with the XYZ color 27.2285, 24.7727, 10.1840.



This preview shows how white text looks on a background with the XYZ color 27.2285, 24.7727,

Color Blindness Simulation

Color vision deficiency is a very complex topic, and I could not describe the different causes any better than Wikipedia does, so if you want to learn more, you should check out their [article about color blindness](#).

Dichromacy



Original Color

27.2285, 24.7727, 10.1840

Protanopia

22.9713, 24.9545, 11.1954

Deuteranopia

25.1890, 24.6888, 10.0944



Tritanopia

30.0215, 24.8194, 23.6304

Trichromacy



Original Color

27.2285, 24.7727, 10.1840

Protanomaly

24.4968, 24.9166, 10.9154

Deuteranomaly

25.7838, 24.6043, 10.0468

Tritanomaly

28.8891, 24.7240, 17.7176

Monochromacy



Original Color

27.2285, 24.7727, 10.1840

Achromatopsia

23.4014, 24.6201, 26.8113

Achromatomaly

24.2374, 24.3928, 19.3504

CSS Examples

Text

The CSS property to change the color of the text to XYZ 27.2285, 24.7727, 10.1840 is called "color". The color property can be set on classes, ids or directly on the HTML element.

This example shows how text in the color `rgb(179, 125, 76)` looks like.

```
.text, #text, p{  
    color:rgb(179, 125, 76)  
}
```

If you want to add a text shadow in that color use the text-shadow property, you can generate a text shadow directly with our [CSS Text Shadow Generator](#).

Here you see how black text with a 4 pixel rgb(179, 125, 76) colored shadow looks like.

```
.shadow{ text-shadow: 4px 4px 2px rgb(179, 125, 76) }
```

Border

The CSS property to change the border of an element to XYZ 27.2285, 24.7727, 10.1840 is called "border". The border property can be set on classes, ids or directly on the HTML element.

This example shows the color as border, it can be applied via the CSS property "border" or "border-color".

```
.border, #border, table{ border:4px solid rgb(179, 125, 76) }
```


If only the border color should be changed use the property `border-color`.

```
.border{ border-color:rgb(179, 125, 76) }
```

If you want to add a box shadow in that color use:

Here you see how a box with a 4 pixel `rgb(179, 125, 76)` colored shadow looks like.

```
.boxshadow{ -moz-box-shadow:4px 4px 4px  
4px rgb(179, 125, 76); -webkit-box-  
shadow:4px 4px 4px 4px rgb(179, 125, 76);  
box-shadow:4px 4px 4px 4px rgb(179, 125,  
76) }
```

Background

The CSS property to change the background color of an element to XYZ 27.2285, 24.7727, 10.1840 is called "background". The background property can be set on classes, ids or directly on the HTML element.

```
.background, #background, body{  
background: rgb(179, 125, 76) }
```

If only the background color should be changed can be used:

```
.background{ background-color: rgb(179,  
125, 76) }
```

This example shows the color as background, it is applied via the CSS property "background".

To optimize and compress your CSS code, you can use our [online CSS compressor and optimizer](#) based on csstidy. If you want to create a linear or radial gradient as background or border, check our [CSS Gradient Generator](#).

Hey! You found this booklet interesting? Support Converting Colors with the new Membership Option!

The pro membership hides all ads, plus gives you double the colors in the color bucket, and more awesome pro features!

[Learn more, Memberships starting at \\$2.50/m!](#)

**Follow me
on Twitter!**

@ConvertingColor