

Converting Colors

XYZ(27.5208, 26.2114, 20.4388)

Have a look what the booklet for
XYZ(27.5208, 26.2114, 20.4388)
contains.

XYZ(27.5348, 26.2749, 20.4499)	3
<i>Conversions</i>	4
<i>Details</i>	6
<i>Harmonies</i>	12
<i>Previews</i>	24
<i>Color Blindness Simulation</i>	28
<i>CSS Examples</i>	31

Color

**XYZ(27.5348, 26.2749,
20.4499)**

Conversions

Conversions Part 1

Format	Color
Hex	A78575
RGB	167, 133, 117
RGB Percent	65%, 52%, 46%
CMY	0.3451, 0.4784, 0.5412
CMYK	0.00, 0.20, 0.30, 0.35
HSL	19°, 22%, 56%
HSV	19°, 30%, 65%
XYZ	27.5348, 26.2749, 20.4499
YIQ	141.3420, 25.4000, 2.2320

Conversions

Conversions Part 2

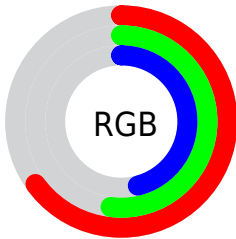
Format	Color
R _Y B	167, 141, 117
Decimal	10978677
CIE Lab	58.30, 10.59, 13.56
CIE LCh	58, 17.210, 52.007
Yxy	26.2749, 0.3708, 0.3538
Android (android.graphics.Color)	4289168757 (0xFFA78575)
YUV	141.3420, -12.0006, 22.5021
Hunter-Lab	51.2590, 6.1814, 12.2275

Details

The XYZ color **27.5348, 26.2749, 20.4499** is a dark color, and the websafe version is hex **CC9999**. A complement of this color would be **25.3775, 28.7043, 40.7624**, and the grayscale version is **25.4910, 26.8185, 29.2053**.

A 20% lighter version of the original color is **55.1518, 53.6704, 44.9887**, and **11.1069, 10.1936, 7.0124** is the 20% darker color. If you saturate the color by 10%, you get **25.1678, 22.9746, 15.2411**, and if you desaturate by 10%, it is **30.2464, 29.9839, 26.6384**.

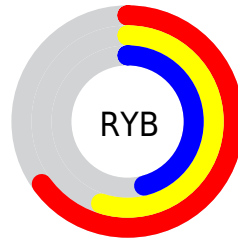
Distribution



Red (65%)

Green (52%)

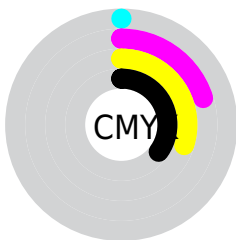
Blue (46%)



Red (65%)

Yellow (55%)

Blue (46%)

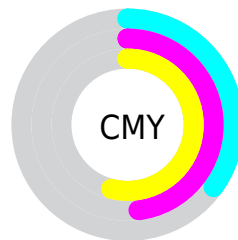


Cyan (0%)

Magenta (20%)

Yellow (30%)

Black (35%)



Cyan (35%)

Magenta (48%)

Yellow (54%)

Brightness & Saturation Gradients

These gradients show how the XYZ color 27.5348, 26.2749, 20.4499 changes by changing the brightness by 10 percent. The first figure shows a shift by +10% for each color and the second figure -10%.

Similar to the brightness gradients but the following saturation gradients show a change of the XYZ color 27.5348, 26.2749, 20.4499 by changing the saturation by 10% instead.

■ 27.5348, 26.2749,
20.4499

■ 27.5348, 26.2749,
20.4499

282.3579,
284.1289, 267.0247

■ 18.1139, 17.0294,
12.5352

■ 55.1547, 53.7181,
45.0390

■ 11.1320, 10.2555,
6.9823

■ 74.0845, 72.6846,
62.5505

■ 6.2236, 5.5687,
3.3728

■ 96.9146, 95.6602,
84.0981

■ 3.0235, 2.5846,
1.2880

124.0104,
123.0293, 110.1001

■ 1.1662, 0.9189,
0.0519

155.7373,
155.1764, 140.9753

■ 0.0794, 0.0000,
0.0000

192.4606,

■ 0.0000, 0.0000,

192.4857, 177.1421

0.0000

234.5457,
235.3418, 219.0190

■ 27.5348, 26.2749,
20.4499

■ 27.5348, 26.2749,
20.4499

■ 25.1678, 22.9746,
15.2411

■ 30.2464, 29.9839,
26.6384

■ 23.1288, 20.0649,
10.9597

■ 33.3144, 34.1115,
33.8521

■ 21.4027, 17.5318,
7.5505

■ 36.7522, 38.6720,
42.1356

■ 19.9722, 15.3590,
4.9523

■ 40.5722, 43.6776,
51.5304

■ 18.8183, 13.5288,
3.0954

■ 44.7860, 49.1403,
62.0757

■ 17.9192, 12.0216,
1.8981

■ 49.4048, 55.0714,
73.8089

■ 17.2339, 10.8096,
1.1810

■ 54.4393, 61.4819,
86.7655

■ 17.2302, 10.8031,
1.1771

■ 59.8998, 68.3826,
100.9797

■ 63.7516, 74.9658,
105.7175

Harmonies

Analogous

The Analogous color harmony consists of three colors that are next to each other on the color wheel.



28.8954, 26.2749, 24.5020



27.5348, 26.2749, 20.4499



25.5376, 26.2749, 18.6420

Triad

The Triadic color harmony groups three colors that are evenly spaced from another and form a triangle on the color wheel.



27.5348, 26.2749, 20.4499



21.1948, 26.2749, 27.0352



26.5128, 26.2749, 40.6864

Complementary

The Complementary color scheme is a pair of colors which are on the opposite of each other on the color wheel.



27.5348, 26.2749, 20.4499



25.3775, 28.7043, 40.7624

Split Complementary

Split-complementary colors differ from the complementary color scheme. The scheme consists of three colors, the original color and two neighbors of the complement color.



24.4178, 26.2749, 41.6142



27.5348, 26.2749, 20.4499



21.4235, 26.2749, 33.1508

Square

The Square scheme is like the rectangle color scheme, but the four colors are evenly spaced on the color wheel.



27.5348, 26.2749, 20.4499



21.9330, 26.2749, 22.0818



22.5762, 26.2749, 38.6922



28.2828, 26.2749, 36.3101

Rectangle

The Rectangle color scheme consists of four colors that form a rectangle on the color wheel.



27.5348, 26.2749, 20.4499



24.1453, 26.2749, 18.7476



22.5762, 26.2749, 38.6922



25.8205, 26.2749, 41.4344

Sweetspot

The Sweet Spot groups the original color and five complimentary colors.



27.5355, 26.2761, 20.4504



60.1178, 61.6977, 61.7094



27.8974, 23.1781, 32.3529



13.2696, 13.5615, 13.3719



80.6108, 84.8088, 92.3568



14.7206, 15.4872, 16.8656

Same Dimension

The Same Dimension uses a secret algorithm to generate beautiful new colors.



27.5355, 26.2761, 20.4504



46.4017, 43.0112, 30.1753



31.3459, 33.8970, 21.7206



7.7198, 7.9197, 7.9111



13.2247, 8.3467, 0.9141



0.3676, 0.2947, 0.0375

Inverse Universe

The Inverse Universe completely reimagines the original color for something new.



25.3775, 28.7043, 40.7624



41.8929, 48.0622, 72.5442



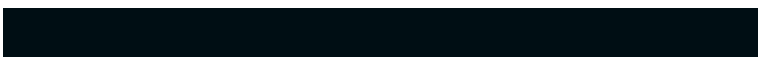
21.7936, 21.5366, 39.5678



7.5421, 8.1211, 9.5884



9.9486, 11.3575, 29.6434



0.2852, 0.3626, 0.7356

Previews

White Background



This preview shows how the XYZ color 27.5348, 26.2749, 20.4499 looks on a white background.

Color Contrast Check

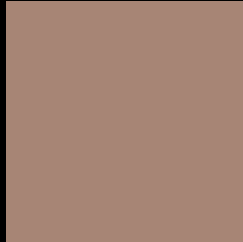
Large Text (above 18pt) WCAG AA ✓ Pass

Any Text WCAG AA × Fail

Large Text (above 18pt) WCAG AAA × Fail

Any Text WCAG AAA × Fail

Black Background



This preview shows how the XYZ color 27.5348, 26.2749, 20.4499 looks on a black background.

Color Contrast Check

Large Text (above 18pt) WCAG AA ✓ Pass

Any Text WCAG AA ✓ Pass

Large Text (above 18pt) WCAG AAA ✓ Pass

Any Text WCAG AAA × Fail

If you want to check with other color combinations, try the [Color Contrast Checker](#).

XYZ 27.5348, 26.2749, 20.4499

Background



This preview shows how black text looks on a background with the XYZ color 27.5348, 26.2749, 20.4499.



This preview shows how white text looks on a background with the XYZ color 27.5348, 26.2749,

Color Blindness Simulation

Color vision deficiency is a very complex topic, and I could not describe the different causes any better than Wikipedia does, so if you want to learn more, you should check out their [article about color blindness](#).

Dichromacy



Original Color

27.5348, 26.2749, 20.4499

Protanopia

24.8009, 26.3153, 21.5415

Deuteranopia

26.7752, 26.2937, 20.4936



Tritanopia

29.0784, 26.2937, 28.3535

Trichromacy



Original Color

27.5348, 26.2749, 20.4499

Protanomaly

25.6019, 26.0933, 21.1399

Deuteranomaly

27.0458, 26.2271, 20.4665

Tritanomaly

28.4296, 26.2234, 25.3930

Monochromacy



Original Color

27.5348, 26.2749, 20.4499

Achromatopsia

25.3171, 26.6356, 29.0061

Achromatomaly

25.8310, 26.3269, 25.5500

CSS Examples

Text

The CSS property to change the color of the text to XYZ 27.5348, 26.2749, 20.4499 is called "color". The color property can be set on classes, ids or directly on the HTML element.

This example shows how text in the color `rgb(167, 133, 117)` looks like.

```
.text, #text, p{  
    color:rgb(167, 133, 117)  
}
```

If you want to add a text shadow in that color use the text-shadow property, you can generate a text shadow directly with our [CSS Text Shadow Generator](#).

Here you see how black text with a 4 pixel rgb(167, 133, 117) colored shadow looks like.

```
.shadow{ text-shadow: 4px 4px 2px rgb(167, 133, 117) }
```

Border

The CSS property to change the border of an element to XYZ 27.5348, 26.2749, 20.4499 is called "border". The border property can be set on classes, ids or directly on the HTML element.

This example shows the color as border, it can be applied via the CSS property "border" or "border-color".

```
.border, #border, table{ border:4px solid rgb(167, 133, 117) }
```


If only the border color should be changed use the property `border-color`.

```
.border{ border-color:rgb(167, 133, 117) }
```

If you want to add a box shadow in that color use:

Here you see how a box with a 4 pixel `rgb(167, 133, 117)` colored shadow looks like.

```
.boxshadow{ -moz-box-shadow:4px 4px 4px 4px rgb(167, 133, 117); -webkit-box-shadow:4px 4px 4px 4px rgb(167, 133, 117); box-shadow:4px 4px 4px 4px rgb(167, 133, 117) }
```

Background

The CSS property to change the background color of an element to XYZ 27.5348, 26.2749, 20.4499 is called "background". The background property can be set on classes, ids or directly on the HTML element.

```
.background, #background, body{  
background: rgb(167, 133, 117) }
```

If only the background color should be changed can be used:

```
.background{ background-color: rgb(167,  
133, 117) }
```

This example shows the color as background, it is applied via the CSS property "background".

To optimize and compress your CSS code, you can use our [online CSS compressor and optimizer](#) based on csstidy. If you want to create a linear or radial gradient as background or border, check our [CSS Gradient Generator](#).

Hey! You found this booklet interesting? Support Converting Colors with the new Membership Option!

The pro membership hides all ads, plus gives you double the colors in the color bucket, and more awesome pro features!

[Learn more, Memberships starting at \\$2.50/m!](#)

**Follow me
on Twitter!**

@ConvertingColor