

Converting Colors

XYZ(27.6128, 16.1692, 18.7094)

Have a look what the booklet for
XYZ(27.6128, 16.1692, 18.7094)
contains.

XYZ(27.5989, 16.1717, 18.8064)	3
<i>Conversions</i>	4
<i>Details</i>	6
<i>Harmonies</i>	12
<i>Previews</i>	24
<i>Color Blindness Simulation</i>	28
<i>CSS Examples</i>	31

Color

**XYZ(27.5989, 16.1717,
18.8064)**

Conversions

Conversions Part 1

Format	Color
Hex	C43B76
RGB	196, 59, 118
RGB Percent	77%, 23%, 46%
CMY	0.2314, 0.7686, 0.5373
CMYK	0.00, 0.70, 0.40, 0.23
HSL	334°, 54%, 50%
HSV	334°, 70%, 77%
XYZ	27.5989, 16.1717, 18.8064
YIQ	106.6890, 62.7130, 47.3930

Conversions

Conversions Part 2

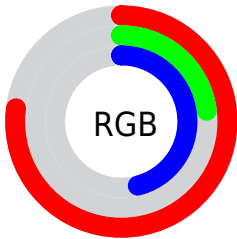
Format	Color
R_{YB}	196, 59, 118
Decimal	12860278
CIE Lab	47.20, 58.69, -2.42
CIE LCh	47, 58.737, 357.641
Yxy	16.1717, 0.4410, 0.2584
Android (android.graphics.Color)	4291050358 (0xFFC43B76)
YUV	106.6890, 5.5763, 78.3257
Hunter-Lab	40.2141, 52.1299, 0.4224

Details

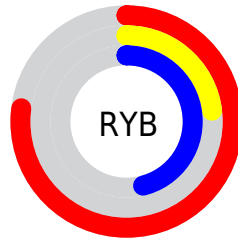
The XYZ color **27.5989, 16.1717, 18.8064** is a dark color, and the websafe version is hex **CC3366**. The color can be described as dark muted rose. A complement of this color would be **26.0600, 42.2162, 30.4450**, and the grayscale version is **13.8630, 14.5850, 15.8830**.

A 20% lighter version of the original color is **54.7411, 36.6531, 42.2198**, and **11.4220, 5.7606, 6.3042** is the 20% darker color. If you saturate the color by 10%, you get **26.1494, 14.2720, 15.2426**, and if you desaturate by 10%, it is **29.5058, 18.8607, 22.9101**.

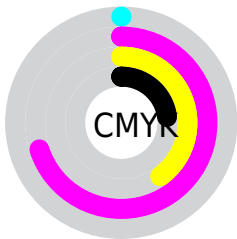
Distribution



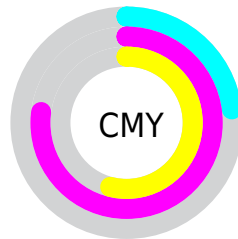
- Red (77%)
- Green (23%)
- Blue (46%)



- Red (77%)
- Yellow (23%)
- Blue (46%)



- Cyan (0%)
- Magenta (70%)
- Yellow (40%)
- Black (23%)



- Cyan (23%)
- Magenta (77%)
- Yellow (54%)

Brightness & Saturation Gradients

These gradients show how the XYZ color 27.5989, 16.1717, 18.8064 changes by changing the brightness by 10 percent. The first figure shows a shift by +10% for each color and the second figure -10%.

Similar to the brightness gradients but the following saturation gradients show a change of the XYZ color 27.5989, 16.1717, 18.8064 by changing the saturation by 10% instead.

■ 27.5989, 16.1717,
18.8064

■ 27.5989, 16.1717,
18.8064

282.6603,
230.3528, 257.7649

■ 18.1624, 9.6457,
11.3551

■ 55.2566, 36.8960,
42.2390

■ 11.1671, 5.1647,
6.1890

■ 74.2085, 51.8632,
59.0574

■ 6.2474, 2.3442,
2.8897

■ 97.0629, 70.4128,
79.8353

■ 3.0382, 0.7970,
1.0386

■ 124.1852, 92.9294,
104.9911

■ 1.1740, 0.0000,
0.0000

■ 155.9407,
119.7973, 134.9434

■ 0.0857, 0.0000,
0.0000

192.6948,

■ 0.0000, 0.0000,

151.4009, 170.1108

0.0000

234.8129,
188.1246, 210.9118

■ 27.5989, 16.1717,
18.8064

■ 27.5989, 16.1717,
18.8064

■ 26.1494, 14.2720,
15.2426

■ 29.5058, 18.8607,
22.9101

■ 25.1083, 13.0680,
12.1885

■ 31.9094, 22.4131,
27.5792

■ 24.3879, 12.3886,
9.6008

■ 34.8458, 26.8976,
32.8380

■ 24.3809, 12.3821,
9.5754

■ 38.3473, 32.3749,
38.7091

■ 42.4437, 38.9008,
45.2134

■ 47.1625, 46.5267,
52.3710

■ 52.5292, 55.3007,
60.2009

■ 58.5683, 65.2681,
68.7212

■ 65.3027, 76.4715,
77.9493

Harmonies

Analogous

The Analogous color harmony consists of three colors that are next to each other on the color wheel.



25.3920, 16.1717, 37.6686



27.5989, 16.1717, 18.8064



25.9682, 16.1717, 7.4260

Triad

The Triadic color harmony groups three colors that are evenly spaced from another and form a triangle on the color wheel.



27.5989, 16.1717, 18.8064



11.2040, 16.1717, 2.5113



10.6397, 16.1717, 54.2764

Complementary

The Complementary color scheme is a pair of colors which are on the opposite of each other on the color wheel.



27.5989, 16.1717, 18.8064



26.0600, 42.2162, 30.4450

Split Complementary

Split-complementary colors differ from the complementary color scheme. The scheme consists of three colors, the original color and two neighbors of the complement color.



8.1381, 16.1717, 34.3979



27.5989, 16.1717, 18.8064



8.4088, 16.1717, 6.3419

Square

The Square scheme is like the rectangle color scheme, but the four colors are evenly spaced on the color wheel.



27.5989, 16.1717, 18.8064



15.7836, 16.1717, 1.7297



7.4230, 16.1717, 16.4621



14.9651, 16.1717, 64.1338

Rectangle

The Rectangle color scheme consists of four colors that form a rectangle on the color wheel.



27.5989, 16.1717, 18.8064



23.0902, 16.1717, 3.8353



7.4230, 16.1717, 16.4621



9.5977, 16.1717, 48.1438

Sweetspot

The Sweet Spot groups the original color and five complimentary colors.



27.5993, 16.1726, 18.8067



75.7555, 68.6529, 80.1428



21.7853, 12.4021, 53.4700



15.7551, 13.9597, 16.4314



0.0000, 0.0000, 0.0000



20.3446, 21.4041, 23.3091

Same Dimension

The Same Dimension uses a secret algorithm to generate beautiful new colors.



27.5993, 16.1726, 18.8067



46.2624, 24.5266, 24.5006



25.6302, 16.2030, 5.9155



10.2492, 10.1483, 11.4029



15.7073, 7.9727, 6.3706



0.7132, 0.3583, 0.4569

Inverse Universe

The Inverse Universe completely reimagines the original color for something new.



27.5993, 16.1726, 18.8067



46.2624, 24.5266, 24.5006



29.5101, 40.3998, 58.4670



10.2492, 10.1483, 11.4029



15.7073, 7.9727, 6.3706



0.7132, 0.3583, 0.4569

Previews

White Background



This preview shows how the XYZ color 27.5989, 16.1717, 18.8064 looks on a white background.

Color Contrast Check

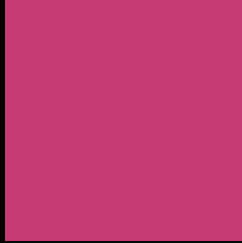
Large Text (above 18pt) WCAG AA ✓ Pass

Any Text WCAG AA ✓ Pass

Large Text (above 18pt) WCAG AAA ✓ Pass

Any Text WCAG AAA × Fail

Black Background



This preview shows how the XYZ color 27.5989, 16.1717, 18.8064 looks on a black background.

Color Contrast Check

Large Text (above 18pt) WCAG AA ✓ Pass

Any Text WCAG AA × Fail

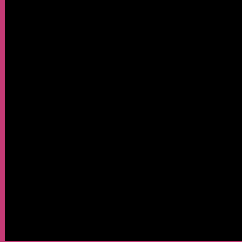
Large Text (above 18pt) WCAG AAA × Fail

Any Text WCAG AAA × Fail

If you want to check with other color combinations, try the [Color Contrast Checker](#).

XYZ 27.5989, 16.1717, 18.8064

Background



This preview shows how black text looks on a background with the XYZ color 27.5989, 16.1717, 18.8064.



This preview shows how white text looks on a background with the XYZ color 27.5989, 16.1717,

Color Blindness Simulation

Color vision deficiency is a very complex topic, and I could not describe the different causes any better than Wikipedia does, so if you want to learn more, you should check out their [article about color blindness](#).

Dichromacy



Original Color

27.5989, 16.1717, 18.8064

Protanopia

16.6372, 16.3699, 31.5610

Deuteranopia

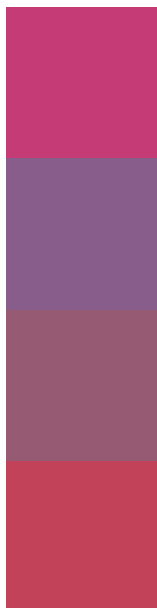
16.6501, 16.3701, 17.3211



Tritanopia

25.4185, 16.2122, 8.2681

Trichromacy



Original Color

27.5989, 16.1717, 18.8064

Protanomaly

18.6407, 14.7526, 26.2912

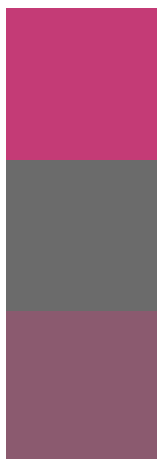
Deuteranomaly

19.3560, 15.1811, 17.8297

Tritanomaly

26.0418, 16.1039, 11.4087

Monochromacy



Original Color

27.5989, 16.1717, 18.8064

Achromatopsia

13.9749, 14.7027, 16.0113

Achromatomaly

17.1729, 13.9490, 16.8262

CSS Examples

Text

The CSS property to change the color of the text to XYZ 27.5989, 16.1717, 18.8064 is called "color". The color property can be set on classes, ids or directly on the HTML element.

This example shows how text in the color `rgb(196, 59, 118)` looks like.

```
.text, #text, p{  
    color:rgb(196, 59, 118)  
}
```

If you want to add a text shadow in that color use the text-shadow property, you can generate a text shadow directly with our [CSS Text Shadow Generator](#).

Here you see how black text with a 4 pixel rgb(196, 59, 118) colored shadow looks like.

```
.shadow{ text-shadow: 4px 4px 2px rgb(196, 59, 118) }
```

Border

The CSS property to change the border of an element to XYZ 27.5989, 16.1717, 18.8064 is called "border". The border property can be set on classes, ids or directly on the HTML element.

This example shows the color as border, it can be applied via the CSS property "border" or "border-color".

```
.border, #border, table{ border:4px solid rgb(196, 59, 118) }
```


If only the border color should be changed use the property `border-color`.

```
.border{ border-color:rgb(196, 59, 118) }
```

If you want to add a box shadow in that color use:

Here you see how a box with a 4 pixel `rgb(196, 59, 118)` colored shadow looks like.

```
.boxshadow{ -moz-box-shadow:4px 4px 4px  
4px rgb(196, 59, 118); -webkit-box-  
shadow:4px 4px 4px 4px rgb(196, 59, 118);  
box-shadow:4px 4px 4px 4px rgb(196, 59,  
118) }
```

Background

The CSS property to change the background color of an element to XYZ 27.5989, 16.1717, 18.8064 is called "background". The background property can be set on classes, ids or directly on the HTML element.

```
.background, #background, body{  
background: rgb(196, 59, 118) }
```

If only the background color should be changed can be used:

```
.background{ background-color: rgb(196, 59,  
118) }
```

This example shows the color as background, it is applied via the CSS property "background".

To optimize and compress your CSS code, you can use our [online CSS compressor and optimizer](#) based on csstidy. If you want to create a linear or radial gradient as background or border, check our [CSS Gradient Generator](#).

Hey! You found this booklet interesting? Support Converting Colors with the new Membership Option!

The pro membership hides all ads, plus gives you double the colors in the color bucket, and more awesome pro features!

[Learn more, Memberships starting at \\$2.50/m!](#)

**Follow me
on Twitter!**

@ConvertingColor