

Converting Colors

XYZ(27.6240, 25.8329, 14.0406)

Have a look what the booklet for
XYZ(27.6240, 25.8329, 14.0406)
contains.

XYZ(27.6822, 25.8874, 14.1274)	3
<i>Conversions</i>	4
<i>Details</i>	6
<i>Harmonies</i>	12
<i>Previews</i>	24
<i>Color Blindness Simulation</i>	28
<i>CSS Examples</i>	31

Color

**XYZ(27.6822, 25.8874,
14.1274)**

Conversions

Conversions Part 1

Format	Color
Hex	AF825E
RGB	175, 130, 94
RGB Percent	69%, 51%, 37%
CMY	0.3137, 0.4902, 0.6314
CMYK	0.00, 0.26, 0.46, 0.31
HSL	27°, 34%, 53%
HSV	27°, 46%, 69%
XYZ	27.6822, 25.8874, 14.1274
YIQ	139.3510, 38.3760, -1.6560

Conversions

Conversions Part 2

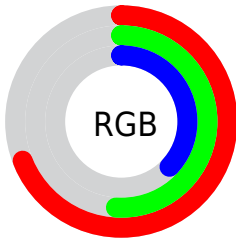
Format	Color
RYB	175, 159, 94
Decimal	11502174
CIELab	57.93, 12.77, 26.21
CIELCh	58, 29.158, 64.036
Yxy	25.8874, 0.4089, 0.3824
Android (android.graphics.Color)	4289692254 (0xFFAF825E)
YUV	139.3510, -22.3580, 31.2642
Hunter-Lab	50.8797, 8.0774, 19.1531

Details

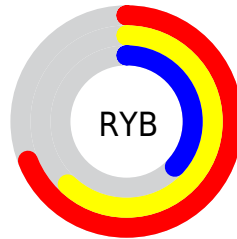
The XYZ color **27.6822, 25.8874, 14.1274** is a dark color, and the websafe version is hex **CC9966**. A complement of this color would be **21.5861, 23.9390, 44.0403**, and the grayscale version is **24.7497, 26.0387, 28.3561**.

A 20% lighter version of the original color is **55.3230, 53.0671, 34.1152**, and **11.2012, 10.0832, 4.0452** is the 20% darker color. If you saturate the color by 10%, you get **25.7518, 23.1440, 10.0392**, and if you desaturate by 10%, it is **29.9142, 28.9489, 19.1951**.

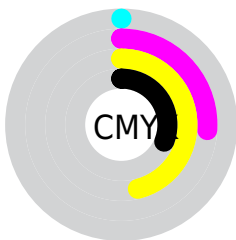
Distribution



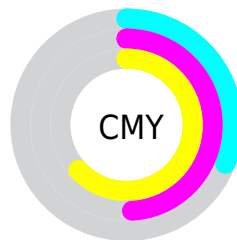
- Red (69%)
- Green (51%)
- Blue (37%)



- Red (69%)
- Yellow (62%)
- Blue (37%)



- Cyan (0%)
- Magenta (26%)
- Yellow (46%)
- Black (31%)





- Cyan (31%)
- Magenta (49%)
- Yellow (63%)

Brightness & Saturation Gradients


These gradients show how the XYZ color 27.6822, 25.8874, 14.1274 changes by changing the brightness by 10 percent. The first figure shows a shift by +10% for each color and the second figure -10%.


Similar to the brightness gradients but the following saturation gradients show a change of the XYZ color 27.6822, 25.8874, 14.1274 by changing the saturation by 10% instead.


 27.6822, 25.8874,
14.1274


 27.6822, 25.8874,
14.1274


283.0529,
282.2289, 229.4779


 18.2255, 16.7394,
8.0696


 55.3889, 53.0932,
34.0353

 11.2126, 10.0489,
4.0511


 74.3695, 71.9199,
48.7224

 6.2784, 5.4314,
1.6534


 97.2555, 94.7416,
67.1231

 3.0574, 2.5025,
0.3285

 124.4121,
121.9426, 89.6558

 1.1842, 0.8779,
0.0000

156.2049,
153.9075, 116.7390

 0.0938, 0.0000,
0.0000

192.9990,

 0.0000, 0.0000,

191.0206, 148.7915

0.0000

235.1599,
233.6662, 186.2316

■ 27.6822, 25.8874,
14.1274

■ 27.6822, 25.8874,
14.1274

■ 25.7518, 23.1440,
10.0392

■ 29.9142, 28.9489,
19.1951

■ 24.1054, 20.7033,
6.8635

■ 32.4600, 32.3357,
25.2998

■ 22.7264, 18.5541,
4.5275

■ 35.3337, 36.0592,
32.4968

■ 21.5953, 16.6825,
2.9461

■ 38.5476, 40.1293,
40.8365

■ 20.6869, 15.0724,
2.0056

■ 42.1134, 44.5553,
50.3665

■ 20.3884, 14.5325,
1.7305

■ 46.0424, 49.3462,
61.1315

■ 50.3451, 54.5105,
73.1739

■ 55.0316, 60.0566,
86.5342

■ 60.1118, 65.9926,
101.2509

Harmonies

Analogous

The Analogous color harmony consists of three colors that are next to each other on the color wheel.



30.6374, 25.8874, 18.6872



27.6822, 25.8874, 14.1274



24.1328, 25.8874, 12.9596

Triad

The Triadic color harmony groups three colors that are evenly spaced from another and form a triangle on the color wheel.



27.6822, 25.8874, 14.1274



18.4640, 25.8874, 29.5706



28.5825, 25.8874, 47.4471

Complementary

The Complementary color scheme is a pair of colors which are on the opposite of each other on the color wheel.



27.6822, 25.8874, 14.1274



21.5861, 23.9390, 44.0403

Split Complementary

Split-complementary colors differ from the complementary color scheme. The scheme consists of three colors, the original color and two neighbors of the complement color.



25.0837, 25.8874, 52.2201



27.6822, 25.8874, 14.1274



19.4218, 25.8874, 40.4592

Square

The Square scheme is like the rectangle color scheme, but the four colors are evenly spaced on the color wheel.



27.6822, 25.8874, 14.1274



19.0186, 25.8874, 20.5382



21.7651, 25.8874, 49.4000



31.1909, 25.8874, 37.5319

Rectangle

The Rectangle color scheme consists of four colors that form a rectangle on the color wheel.



27.6822, 25.8874, 14.1274



21.9554, 25.8874, 13.9546



21.7651, 25.8874, 49.4000



27.4601, 25.8874, 49.8007

Sweetspot

The Sweet Spot groups the original color and five complimentary colors.



27.6828, 25.8886, 14.1279



64.4073, 66.0192, 61.0831



26.4082, 19.0101, 27.0499



14.0556, 14.3418, 12.9118



84.5950, 89.0005, 96.9216



16.2198, 17.0645, 18.5832

Same Dimension

The Same Dimension uses a secret algorithm to generate beautiful new colors.



27.6828, 25.8886, 14.1279



45.9035, 41.1347, 17.5410



33.9994, 38.5217, 16.2334



8.2873, 8.5794, 8.4326



14.6604, 10.5262, 1.2591



0.4629, 0.4030, 0.0534

Inverse Universe

The Inverse Universe completely reimagines the original color for something new.



21.5861, 23.9390, 44.0403



33.5588, 37.1660, 78.0419



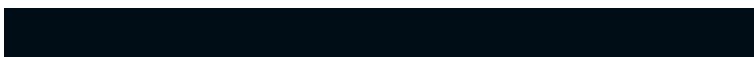
16.8540, 14.4747, 42.4629



7.9339, 8.4672, 10.1689



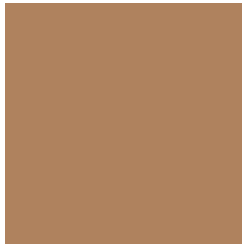
8.6788, 8.4915, 30.2261



0.2949, 0.3431, 0.8587

Previews

White Background



This preview shows how the XYZ color 27.6822, 25.8874, 14.1274 looks on a white background.

Color Contrast Check

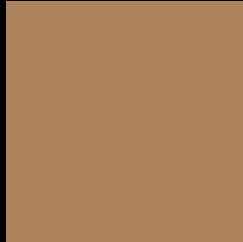
Large Text (above 18pt) WCAG AA ✓ Pass

Any Text WCAG AA × Fail

Large Text (above 18pt) WCAG AAA × Fail

Any Text WCAG AAA × Fail

Black Background



This preview shows how the XYZ color 27.6822, 25.8874, 14.1274 looks on a black background.

Color Contrast Check

Large Text (above 18pt) WCAG AA ✓ Pass

Any Text WCAG AA ✓ Pass

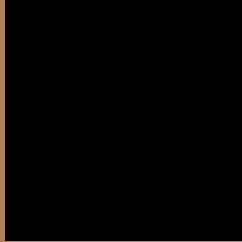
Large Text (above 18pt) WCAG AAA ✓ Pass

Any Text WCAG AAA × Fail

If you want to check with other color combinations, try the [Color Contrast Checker](#).

XYZ 27.6822, 25.8874, 14.1274

Background



This preview shows how black text looks on a background with the XYZ color 27.6822, 25.8874, 14.1274.



This preview shows how white text looks on a background with the XYZ color 27.6822, 25.8874,

Color Blindness Simulation

Color vision deficiency is a very complex topic, and I could not describe the different causes any better than Wikipedia does, so if you want to learn more, you should check out their [article about color blindness](#).

Dichromacy



Original Color

27.6822, 25.8874, 14.1274

Protanopia

24.1997, 25.9264, 15.2841

Deuteranopia

26.2997, 25.7809, 13.9460



Tritanopia

30.2271, 25.9722, 25.9742

Trichromacy



Original Color

27.6822, 25.8874, 14.1274

Protanomaly

25.4590, 25.9450, 14.9753

Deuteranomaly

26.8046, 25.8389, 13.9306

Tritanomaly

29.2792, 25.9756, 20.9234

Monochromacy



Original Color

27.6822, 25.8874, 14.1274

Achromatopsia

24.5403, 25.8183, 28.1161

Achromatomaly

25.3282, 25.7138, 22.3672

CSS Examples

Text

The CSS property to change the color of the text to XYZ 27.6822, 25.8874, 14.1274 is called "color". The color property can be set on classes, ids or directly on the HTML element.

This example shows how text in the color `rgb(175, 130, 94)` looks like.

```
.text, #text, p{  
    color:rgb(175, 130, 94)  
}
```

If you want to add a text shadow in that color use the text-shadow property, you can generate a text shadow directly with our [CSS Text Shadow Generator](#).

Here you see how black text with a 4 pixel rgb(175, 130, 94) colored shadow looks like.

```
.shadow{ text-shadow: 4px 4px 2px rgb(175, 130, 94) }
```

Border

The CSS property to change the border of an element to XYZ 27.6822, 25.8874, 14.1274 is called "border". The border property can be set on classes, ids or directly on the HTML element.

This example shows the color as border, it can be applied via the CSS property "border" or "border-color".

```
.border, #border, table{ border:4px solid rgb(175, 130, 94) }
```


If only the border color should be changed use the property `border-color`.

```
.border{ border-color:rgb(175, 130, 94) }
```

If you want to add a box shadow in that color use:

Here you see how a box with a 4 pixel `rgb(175, 130, 94)` colored shadow looks like.

```
.boxshadow{ -moz-box-shadow:4px 4px 4px  
4px rgb(175, 130, 94); -webkit-box-  
shadow:4px 4px 4px 4px rgb(175, 130, 94);  
box-shadow:4px 4px 4px 4px rgb(175, 130,  
94) }
```

Background

The CSS property to change the background color of an element to XYZ 27.6822, 25.8874, 14.1274 is called "background". The background property can be set on classes, ids or directly on the HTML element.

```
.background, #background, body{  
background: rgb(175, 130, 94) }
```

If only the background color should be changed can be used:

```
.background{ background-color: rgb(175,  
130, 94) }
```

This example shows the color as background, it is applied via the CSS property "background".

To optimize and compress your CSS code, you can use our [online CSS compressor and optimizer](#) based on csstidy. If you want to create a linear or radial gradient as background or border, check our [CSS Gradient Generator](#).

Hey! You found this booklet interesting? Support Converting Colors with the new Membership Option!

The pro membership hides all ads, plus gives you double the colors in the color bucket, and more awesome pro features!

[Learn more, Memberships starting at \\$2.50/m!](#)

**Follow me
on Twitter!**

@ConvertingColor