

Converting Colors

XYZ(27.6878, 26.1825, 20.6146)

Have a look what the booklet for
XYZ(27.6878, 26.1825, 20.6146)
contains.

XYZ(27.6697, 26.1354, 20.7258)	3
<i>Conversions</i>	4
<i>Details</i>	6
<i>Harmonies</i>	12
<i>Previews</i>	24
<i>Color Blindness Simulation</i>	28
<i>CSS Examples</i>	31

Color

**XYZ(27.6697, 26.1354,
20.7258)**

Conversions

Conversions Part 1

Format	Color
Hex	A88476
RGB	168, 132, 118
RGB Percent	66%, 52%, 46%
CMY	0.3412, 0.4823, 0.5373
CMYK	0.00, 0.21, 0.30, 0.34
HSL	17°, 22%, 56%
HSV	17°, 30%, 66%
XYZ	27.6697, 26.1354, 20.7258
YIQ	141.1680, 25.9500, 3.2780

Conversions

Conversions Part 2

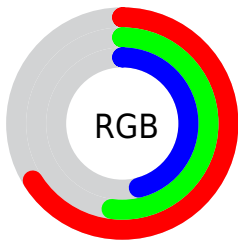
Format	Color
R_{YB}	168, 137, 118
Decimal	11043958
CIE Lab	58.17, 11.70, 12.82
CIE LCh	58, 17.359, 47.619
Yxy	26.1354, 0.3713, 0.3507
Android (android.graphics.Color)	4289234038 (0xFFA88476)
YUV	141.1680, -11.4218, 23.5317
Hunter-Lab	51.1228, 7.1464, 11.7491

Details

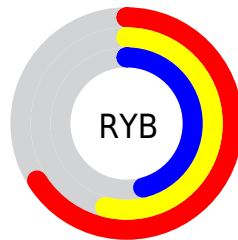
The XYZ color **27.6697, 26.1354, 20.7258** is a dark color, and the websafe version is hex **CC9999**. A complement of this color would be **26.0942, 29.7888, 41.4202**, and the grayscale version is **25.4202, 26.7440, 29.1243**.

A 20% lighter version of the original color is **55.3451, 53.4475, 45.4296**, and **11.1930, 10.1216, 7.1581** is the 20% darker color. If you saturate the color by 10%, you get **25.2129, 22.6796, 15.4124**, and if you desaturate by 10%, it is **30.4959, 30.0451, 27.0402**.

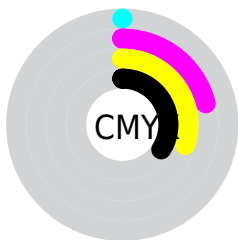
Distribution



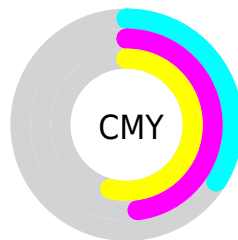
- Red (66%)
- Green (52%)
- Blue (46%)



- Red (66%)
- Yellow (54%)
- Blue (46%)



- Cyan (0%)
- Magenta (21%)
- Yellow (30%)
- Black (34%)



- Cyan (34%)
- Magenta (48%)
- Yellow (54%)

Brightness & Saturation Gradients

These gradients show how the XYZ color 27.6697, 26.1354, 20.7258 changes by changing the brightness by 10 percent. The first figure shows a shift by +10% for each color and the second figure -10%.

Similar to the brightness gradients but the following saturation gradients show a change of the XYZ color 27.6697, 26.1354, 20.7258 by changing the saturation by 10% instead.

■ 27.6697, 26.1354,
20.7258

■ 27.6697, 26.1354,
20.7258

282.9940,
283.4461, 268.5507

■ 18.2160, 16.9250,
12.7344

■ 55.3690, 53.4933,
45.5056

■ 11.2058, 10.1810,
7.1174

■ 74.3453, 72.4095,
63.1311

■ 6.2737, 5.5191,
3.4560

■ 97.2266, 95.3299,
84.8051

■ 3.0545, 2.5550,
1.3319

124.3781,
122.6386, 110.9460

■ 1.1826, 0.9041,
0.0878

156.1652,
154.7202, 141.9725

■ 0.0926, 0.0000,
0.0000

192.9534,

■ 0.0000, 0.0000,

191.9591, 178.3031

0.0000

235.1078,
234.7396, 220.3563

■ 27.6697, 26.1354,
20.7258

■ 27.6697, 26.1354,
20.7258

■ 25.2129, 22.6796,
15.4124

■ 30.4959, 30.0451,
27.0402

■ 23.1075, 19.6574,
11.0464

■ 33.7043, 34.4208,
34.4022

■ 21.3371, 17.0521,
7.5720

■ 37.3097, 39.2789,
42.8571

■ 19.8829, 14.8448,
4.9264

■ 41.3254, 44.6336,
52.4473

■ 18.7243, 13.0146,
3.0386

■ 45.7640, 50.4987,
63.2129

■ 17.8377, 11.5389,
1.8257

■ 50.6377, 56.8873,
75.1920

■ 17.1809, 10.3862,
1.1107

■ 55.9580, 63.8122,
88.4209

■ 17.1671, 10.3621,
1.0953

■ 61.7363, 71.2856,
102.9346

■ 65.6114, 78.3707,
106.2767

Harmonies

Analogous

The Analogous color harmony consists of three colors that are next to each other on the color wheel.



28.9009, 26.1354, 25.0911



27.6697, 26.1354, 20.7258



25.7187, 26.1354, 18.5716

Triad

The Triadic color harmony groups three colors that are evenly spaced from another and form a triangle on the color wheel.



27.6697, 26.1354, 20.7258



21.0942, 26.1354, 26.0437



26.0861, 26.1354, 40.9937

Complementary

The Complementary color scheme is a pair of colors which are on the opposite of each other on the color wheel.



27.6697, 26.1354, 20.7258



26.0942, 29.7888, 41.4202

Split Complementary

Split-complementary colors differ from the complementary color scheme. The scheme consists of three colors, the original color and two neighbors of the complement color.



23.9833, 26.1354, 41.3444



27.6697, 26.1354, 20.7258



21.1802, 26.1354, 32.1112

Square

The Square scheme is like the rectangle color scheme, but the four colors are evenly spaced on the color wheel.



27.6697, 26.1354, 20.7258



21.9700, 26.1354, 21.3380



22.2118, 26.1354, 37.9052



27.9517, 26.1354, 37.0057

Rectangle

The Rectangle color scheme consists of four colors that form a rectangle on the color wheel.



27.6697, 26.1354, 20.7258



24.3082, 26.1354, 18.4461



22.2118, 26.1354, 37.9052



25.3813, 26.1354, 41.5593

Sweetspot

The Sweet Spot groups the original color and five complimentary colors.



27.6704, 26.1366, 20.7263



61.5311, 62.9625, 63.2861



28.5154, 23.6373, 33.9234



13.2226, 13.4676, 13.3563



80.6108, 84.8088, 92.3568



14.7206, 15.4872, 16.8656

Same Dimension

The Same Dimension uses a secret algorithm to generate beautiful new colors.



27.6704, 26.1366, 20.7263



47.0655, 43.0148, 30.7693



31.3630, 33.5219, 21.9572



7.6958, 7.8717, 7.9030



13.0023, 7.9019, 0.8399



0.3587, 0.2770, 0.0346

Inverse Universe

The Inverse Universe completely reimagines the original color for something new.



26.0942, 29.7888, 41.4202



43.7094, 50.7545, 74.7180



22.4777, 22.5557, 40.2147



7.5673, 8.1715, 9.5968



10.5407, 12.5415, 29.8407



0.2963, 0.3848, 0.7393

Previews

White Background



This preview shows how the XYZ color 27.6697, 26.1354, 20.7258 looks on a white background.

Color Contrast Check

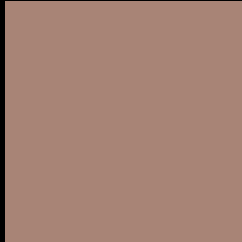
Large Text (above 18pt) WCAG AA ✓ Pass

Any Text WCAG AA × Fail

Large Text (above 18pt) WCAG AAA × Fail

Any Text WCAG AAA × Fail

Black Background



This preview shows how the XYZ color 27.6697, 26.1354, 20.7258 looks on a black background.

Color Contrast Check

Large Text (above 18pt) WCAG AA ✓ Pass

Any Text WCAG AA ✓ Pass

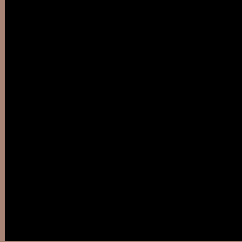
Large Text (above 18pt) WCAG AAA ✓ Pass

Any Text WCAG AAA × Fail

If you want to check with other color combinations, try the [Color Contrast Checker](#).

XYZ 27.6697, 26.1354, 20.7258

Background



This preview shows how black text looks on a background with the XYZ color 27.6697, 26.1354, 20.7258.



This preview shows how white text looks on a background with the XYZ color 27.6697, 26.1354,

Color Blindness Simulation

Color vision deficiency is a very complex topic, and I could not describe the different causes any better than Wikipedia does, so if you want to learn more, you should check out their [article about color blindness](#).

Dichromacy



Original Color

27.6697, 26.1354, 20.7258

Protanopia

24.9236, 26.3644, 22.1876

Deuteranopia

26.5728, 26.1894, 20.4841



Tritanopia

29.0880, 26.1106, 27.9328

Trichromacy



Original Color

27.6697, 26.1354, 20.7258

Protanomaly

25.9144, 26.2404, 21.7882

Deuteranomaly

27.0458, 26.2271, 20.4665

Tritanomaly

28.4416, 26.0390, 24.9997

Monochromacy



Original Color

27.6697, 26.1354, 20.7258

Achromatopsia

25.3171, 26.6356, 29.0061

Achromatomaly

26.0846, 26.4497, 25.9208

CSS Examples

Text

The CSS property to change the color of the text to XYZ 27.6697, 26.1354, 20.7258 is called "color". The color property can be set on classes, ids or directly on the HTML element.

This example shows how text in the color `rgb(168, 132, 118)` looks like.

```
.text, #text, p{  
    color:rgb(168, 132, 118)  
}
```

If you want to add a text shadow in that color use the text-shadow property, you can generate a text shadow directly with our [CSS Text Shadow Generator](#).

Here you see how black text with a 4 pixel rgb(168, 132, 118) colored shadow looks like.

```
.shadow{ text-shadow: 4px 4px 2px rgb(168, 132, 118) }
```

Border

The CSS property to change the border of an element to XYZ 27.6697, 26.1354, 20.7258 is called "border". The border property can be set on classes, ids or directly on the HTML element.

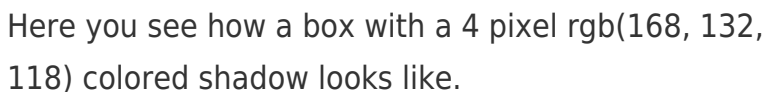
This example shows the color as border, it can be applied via the CSS property "border" or "border-color".

```
.border, #border, table{ border:4px solid rgb(168, 132, 118) }
```


If only the border color should be changed use the property `border-color`.

```
.border{ border-color:rgb(168, 132, 118) }
```

If you want to add a box shadow in that color use:



Here you see how a box with a 4 pixel `rgb(168, 132, 118)` colored shadow looks like.

```
.boxshadow{ -moz-box-shadow:4px 4px 4px  
4px rgb(168, 132, 118); -webkit-box-  
shadow:4px 4px 4px 4px rgb(168, 132, 118);  
box-shadow:4px 4px 4px 4px rgb(168, 132,  
118) }
```

Background

The CSS property to change the background color of an element to XYZ 27.6697, 26.1354, 20.7258 is called "background". The background property can be set on classes, ids or directly on the HTML element.

```
.background, #background, body{  
background: rgb(168, 132, 118) }
```

If only the background color should be changed can be used:

```
.background{ background-color: rgb(168,  
132, 118) }
```

This example shows the color as background, it is applied via the CSS property "background".

To optimize and compress your CSS code, you can use our [online CSS compressor and optimizer](#) based on csstidy. If you want to create a linear or radial gradient as background or border, check our [CSS Gradient Generator](#).

Hey! You found this booklet interesting? Support Converting Colors with the new Membership Option!

The pro membership hides all ads, plus gives you double the colors in the color bucket, and more awesome pro features!

[Learn more, Memberships starting at \\$2.50/m!](#)

**Follow me
on Twitter!**

@ConvertingColor