

Converting Colors

XYZ(27.7653, 25.9555, 24.9355)

Have a look what the booklet for
XYZ(27.7653, 25.9555, 24.9355)
contains.

XYZ(27.7301, 25.8706, 25.0047)	3
<i>Conversions</i>	4
<i>Details</i>	6
<i>Harmonies</i>	12
<i>Previews</i>	24
<i>Color Blindness Simulation</i>	28
<i>CSS Examples</i>	31

Color

**XYZ(27.7301, 25.8706,
25.0047)**

Conversions

Conversions Part 1

Format	Color
Hex	A58383
RGB	165, 131, 131
RGB Percent	65%, 51%, 51%
CMY	0.3529, 0.4863, 0.4863
CMYK	0.00, 0.21, 0.21, 0.35
HSL	0°, 16%, 58%
HSV	0°, 21%, 65%
XYZ	27.7301, 25.8706, 25.0047
YIQ	141.1660, 20.2640, 7.2080

Conversions

Conversions Part 2

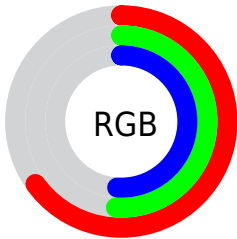
Format	Color
R_{YB}	165, 131, 131
Decimal	10847107
CIE _{Lab}	57.91, 13.03, 4.96
CIE _{LCh}	58, 13.938, 20.855
Yxy	25.8706, 0.3528, 0.3291
Android (android.graphics.Color)	4289037187 (0xFFA58383)
YUV	141.1660, -5.0118, 20.9024
Hunter-Lab	50.8631, 8.3060, 6.4568

Details

The XYZ color **27.7301, 25.8706, 25.0047** is a dark color, and the websafe version is hex **CC9999**. A complement of this color would be **29.6065, 34.4514, 40.6870**, and the grayscale version is **25.3966, 26.7192, 29.0972**.

A 20% lighter version of the original color is **55.3074, 52.9573, 52.6542**, and **11.2755, 10.0048, 9.3195** is the 20% darker color. If you saturate the color by 10%, you get **24.6575, 21.3747, 18.8956**, and if you desaturate by 10%, it is **31.3351, 31.1458, 32.1705**.

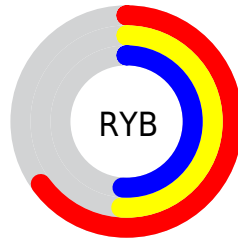
Distribution



Red (65%)

Green (51%)

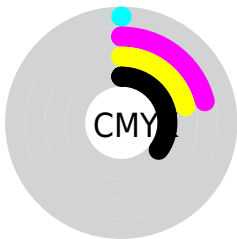
Blue (51%)



Red (65%)

Yellow (51%)

Blue (51%)

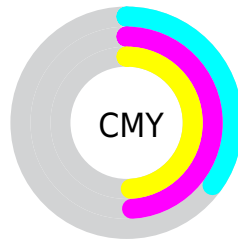


Cyan (0%)

Magenta (21%)

Yellow (21%)

Black (35%)



Cyan (35%)

Magenta (49%)

Yellow (49%)

Brightness & Saturation Gradients

These gradients show how the XYZ color 27.7301, 25.8706, 25.0047 changes by changing the brightness by 10 percent. The first figure shows a shift by +10% for each color and the second figure -10%.

Similar to the brightness gradients but the following saturation gradients show a change of the XYZ color 27.7301, 25.8706, 25.0047 by changing the saturation by 10% instead.

■ 27.7301, 25.8706,
25.0047

■ 27.7301, 25.8706,
25.0047

283.2785,
282.1463, 291.3098

■ 18.2617, 16.7269,
15.8615

■ 55.4649, 53.0661,
52.6291

■ 11.2389, 10.0399,
9.2729

■ 74.4620, 71.8867,
71.9473

■ 6.2962, 5.4254,
4.8204

■ 97.3661, 94.7017,
95.4943

■ 3.0684, 2.4990,
2.0854

124.5426,
121.8954, 123.6886

■ 1.1900, 0.8761,
0.6070

156.3566,
153.8524, 156.9488

■ 0.0985, 0.0000,
0.0000

193.1738,

■ 0.0000, 0.0000,

190.9569, 195.6934

0.0000

235.3593,
233.5934, 240.3408

■ 27.7301, 25.8706,
25.0047

■ 27.7301, 25.8706,
25.0047

■ 24.6575, 21.3747,
18.8956

■ 31.3351, 31.1458,
32.1705

■ 22.0901, 17.6179,
13.7918

■ 35.4938, 37.2311,
40.4381

■ 20.0016, 14.5617,
9.6399

■ 40.2289, 44.1598,
49.8516

■ 18.3622, 12.1628,
6.3810

■ 45.5612, 51.9624,
60.4524

■ 17.1390, 10.3729,
3.9496

■ 51.5106, 60.6679,
72.2800

■ 16.2947, 9.1374,
2.2714

■ 58.0959, 70.3038,
85.3719

■ 15.7852, 8.3917,
1.2586

■ 65.3351, 80.8966,
99.7639

■ 15.5173, 7.9997,
0.7262

■ 69.3272, 86.7394,
107.6962

Harmonies

Analogous

The Analogous color harmony consists of three colors that are next to each other on the color wheel.



27.9151, 25.8706, 29.6634



27.7301, 25.8706, 25.0047



26.6834, 25.8706, 21.5913

Triad

The Triadic color harmony groups three colors that are evenly spaced from another and form a triangle on the color wheel.



27.7301, 25.8706, 25.0047



22.1702, 25.8706, 22.7274



24.0798, 25.8706, 38.3149

Complementary

The Complementary color scheme is a pair of colors which are on the opposite of each other on the color wheel.



27.7301, 25.8706, 25.0047



29.6065, 34.4514, 40.6870

Split Complementary

Split-complementary colors differ from the complementary color scheme. The scheme consists of three colors, the original color and two neighbors of the complement color.



22.6076, 25.8706, 35.9622



27.7301, 25.8706, 25.0047



21.5386, 25.8706, 26.7250

Square

The Square scheme is like the rectangle color scheme, but the four colors are evenly spaced on the color wheel.



27.7301, 25.8706, 25.0047



23.4581, 25.8706, 20.3841



21.6950, 25.8706, 31.5889



25.7561, 25.8706, 37.7189

Rectangle

The Rectangle color scheme consists of four colors that form a rectangle on the color wheel.



27.7301, 25.8706, 25.0047



25.6629, 25.8706, 20.3082



21.6950, 25.8706, 31.5889



23.5459, 25.8706, 37.8336

Sweetspot

The Sweet Spot groups the original color and five complimentary colors.



27.7308, 25.8718, 25.0052



59.3417, 60.4960, 64.0225



30.4252, 26.9489, 39.1957



12.8758, 13.0829, 13.8027



78.6606, 82.7571, 90.1225



14.0027, 14.7319, 16.0430

Same Dimension

The Same Dimension uses a secret algorithm to generate beautiful new colors.



27.7308, 25.8718, 25.0052



46.8768, 42.2564, 39.2422



30.2040, 30.8182, 25.8296



7.0738, 7.0861, 7.3750



11.7390, 6.0519, 0.5494



0.2467, 0.1272, 0.0115

Inverse Universe

The Inverse Universe completely reimagines the original color for something new.



29.6065, 34.4514, 40.6870



50.8867, 60.5980, 72.7669



26.7418, 28.7221, 39.7321



7.2761, 8.0112, 9.0659



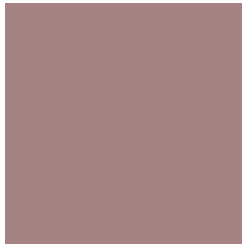
15.3148, 22.4091, 30.4480



0.3218, 0.4709, 0.6398

Previews

White Background



This preview shows how the XYZ color 27.7301, 25.8706, 25.0047 looks on a white background.

Color Contrast Check

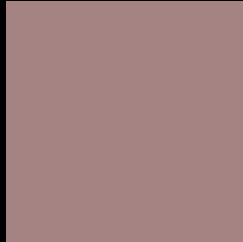
Large Text (above 18pt) WCAG AA ✓ Pass

Any Text WCAG AA × Fail

Large Text (above 18pt) WCAG AAA × Fail

Any Text WCAG AAA × Fail

Black Background



This preview shows how the XYZ color 27.7301, 25.8706, 25.0047 looks on a black background.

Color Contrast Check

Large Text (above 18pt) WCAG AA ✓ Pass

Any Text WCAG AA ✓ Pass

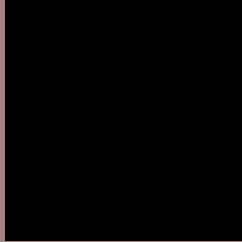
Large Text (above 18pt) WCAG AAA ✓ Pass

Any Text WCAG AAA × Fail

If you want to check with other color combinations, try the [Color Contrast Checker](#).

XYZ 27.7301, 25.8706, 25.0047

Background



This preview shows how black text looks on a background with the XYZ color 27.7301, 25.8706, 25.0047.



This preview shows how white text looks on a background with the XYZ color 27.7301, 25.8706,

Color Blindness Simulation

Color vision deficiency is a very complex topic, and I could not describe the different causes any better than Wikipedia does, so if you want to learn more, you should check out their [article about color blindness](#).

Dichromacy



Original Color

27.7301, 25.8706, 25.0047

Protanopia

24.9335, 26.0541, 26.6365

Deuteranopia

26.4035, 26.0076, 24.7474



Tritanopia

28.4421, 25.9657, 28.3238

Trichromacy



Original Color

27.7301, 25.8706, 25.0047

Protanomaly

25.8697, 25.9089, 26.1917

Deuteranomaly

26.8524, 26.0328, 24.7287

Tritanomaly

28.2239, 25.8784, 27.1744

Monochromacy



Original Color

27.7301, 25.8706, 25.0047

Achromatopsia

25.3171, 26.6356, 29.0061

Achromatomaly

26.0387, 26.1815, 27.3481

CSS Examples

Text

The CSS property to change the color of the text to XYZ 27.7301, 25.8706, 25.0047 is called "color". The color property can be set on classes, ids or directly on the HTML element.

This example shows how text in the color `rgb(165, 131, 131)` looks like.

```
.text, #text, p{  
    color:rgb(165, 131, 131)  
}
```

If you want to add a text shadow in that color use the text-shadow property, you can generate a text shadow directly with our [CSS Text Shadow Generator](#).

Here you see how black text with a 4 pixel rgb(165, 131, 131) colored shadow looks like.

```
.shadow{ text-shadow: 4px 4px 2px rgb(165, 131, 131) }
```

Border

The CSS property to change the border of an element to XYZ 27.7301, 25.8706, 25.0047 is called "border". The border property can be set on classes, ids or directly on the HTML element.

This example shows the color as border, it can be applied via the CSS property "border" or "border-color".

```
.border, #border, table{ border:4px solid rgb(165, 131, 131) }
```


If only the border color should be changed use the property `border-color`.

```
.border{ border-color:rgb(165, 131, 131) }
```

If you want to add a box shadow in that color use:

Here you see how a box with a 4 pixel `rgb(165, 131, 131)` colored shadow looks like.

```
.boxshadow{ -moz-box-shadow:4px 4px 4px  
4px rgb(165, 131, 131); -webkit-box-  
shadow:4px 4px 4px 4px rgb(165, 131, 131);  
box-shadow:4px 4px 4px 4px rgb(165, 131,  
131) }
```

Background

The CSS property to change the background color of an element to XYZ 27.7301, 25.8706, 25.0047 is called "background". The background property can be set on classes, ids or directly on the HTML element.

```
.background, #background, body{  
background: rgb(165, 131, 131) }
```

If only the background color should be changed can be used:

```
.background{ background-color: rgb(165,  
131, 131) }
```

This example shows the color as background, it is applied via the CSS property "background".

To optimize and compress your CSS code, you can use our [online CSS compressor and optimizer](#) based on csstidy. If you want to create a linear or radial gradient as background or border, check our [CSS Gradient Generator](#).

Hey! You found this booklet interesting? Support Converting Colors with the new Membership Option!

The pro membership hides all ads, plus gives you double the colors in the color bucket, and more awesome pro features!

[Learn more, Memberships starting at \\$2.50/m!](#)

**Follow me
on Twitter!**

@ConvertingColor