

Converting Colors

XYZ(27.9290, 16.7354, 19.2122)

Have a look what the booklet for
XYZ(27.9290, 16.7354, 19.2122)
contains.

XYZ(27.9281, 16.7345, 19.2109)	3
<i>Conversions</i>	4
<i>Details</i>	6
<i>Harmonies</i>	12
<i>Previews</i>	24
<i>Color Blindness Simulation</i>	28
<i>CSS Examples</i>	31

Color

**XYZ(27.9281, 16.7345,
19.2109)**

Conversions

Conversions Part 1

Format	Color
Hex	C44077
RGB	196, 64, 119
RGB Percent	77%, 25%, 47%
CMY	0.2314, 0.7490, 0.5333
CMYK	0.00, 0.67, 0.39, 0.23
HSL	335°, 53%, 51%
HSV	335°, 67%, 77%
XYZ	27.9281, 16.7345, 19.2109
YIQ	109.7380, 61.0170, 45.0890

Conversions

Conversions Part 2

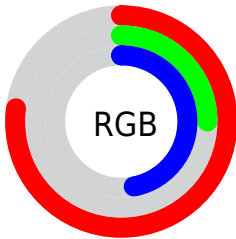
Format	Color
R_{YB}	196, 64, 119
Decimal	12861559
CIE Lab	47.92, 56.87, -1.96
CIE LCh	48, 56.908, 358.026
Yxy	16.7345, 0.4372, 0.2620
Android (android.graphics.Color)	4291051639 (0xFFC44077)
YUV	109.7380, 4.5662, 75.6518
Hunter-Lab	40.9078, 50.2747, 0.7920

Details

The XYZ color **27.9281, 16.7345, 19.2109** is a dark color, and the websafe version is hex **CC3366**. The color can be described as dark muted rose. A complement of this color would be **26.6631, 42.4933, 31.9991**, and the grayscale version is **14.7221, 15.4888, 16.8673**.

A 20% lighter version of the original color is **55.3072, 37.6332, 42.8770**, and **11.6186, 5.8582, 6.4796** is the 20% darker color. If you saturate the color by 10%, you get **26.3646, 14.6412, 15.5032**, and if you desaturate by 10%, it is **29.9634, 19.6392, 23.4838**.

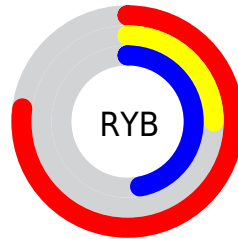
Distribution



Red (77%)

Green (25%)

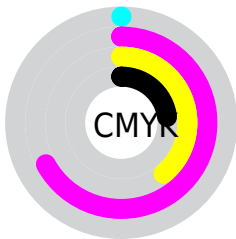
Blue (47%)



Red (77%)

Yellow (25%)

Blue (47%)

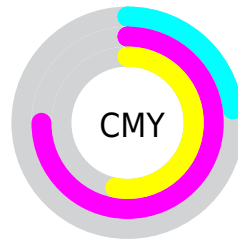


Cyan (0%)

Magenta (67%)

Yellow (39%)

Black (23%)



Cyan (23%)

Magenta (75%)

Yellow (53%)

Brightness & Saturation Gradients

These gradients show how the XYZ color 27.9281, 16.7345, 19.2109 changes by changing the brightness by 10 percent. The first figure shows a shift by +10% for each color and the second figure -10%.

Similar to the brightness gradients but the following saturation gradients show a change of the XYZ color 27.9281, 16.7345, 19.2109 by changing the saturation by 10% instead.

■ 27.9281, 16.7345,
19.2109

■ 27.9281, 16.7345,
19.2109

284.2095,
233.6377, 260.0720

■ 18.4116, 10.0454,
11.6444

■ 55.7791, 37.8687,
42.9316

■ 11.3474, 5.4291,
6.3825

■ 74.8443, 53.0826,
59.9229

■ 6.3700, 2.5011,
3.0065

■ 97.8232, 71.9069,
80.8929

■ 3.1141, 0.8772,
1.0979

■ 125.0810, 94.7259,
106.2601

■ 1.2144, 0.0000,
0.0000

■ 156.9832,
121.9241, 136.4431

■ 0.1177, 0.0000,
0.0000

193.8952,

■ 0.0000, 0.0000,

153.8859, 171.8604

0.0000

236.1821,
190.9956, 212.9305

■ 27.9281, 16.7345,
19.2109

■ 27.9281, 16.7345,
19.2109

■ 26.3646, 14.6412,
15.5032

■ 29.9634, 19.6392,
23.4838

■ 25.2259, 13.2698,
12.3301

■ 32.5085, 23.4268,
28.3479

■ 24.4492, 12.4999,
9.6558

■ 35.5989, 28.1641,
33.8281

■ 24.2750, 12.3398,
9.0174

■ 39.2663, 33.9105,
39.9475

■ 43.5400, 40.7207,
46.7278

■ 48.4472, 48.6452,
54.1896

■ 54.0134, 57.7315,
62.3526

■ 60.2625, 68.0242,
71.2355

■ 67.2175, 79.5655,
80.8563

Harmonies

Analogous

The Analogous color harmony consists of three colors that are next to each other on the color wheel.



25.8160, 16.7345, 37.6265



27.9281, 16.7345, 19.2109



26.2878, 16.7345, 7.9164

Triad

The Triadic color harmony groups three colors that are evenly spaced from another and form a triangle on the color wheel.



27.9281, 16.7345, 19.2109



11.7098, 16.7345, 2.9367



11.2368, 16.7345, 54.1820

Complementary

The Complementary color scheme is a pair of colors which are on the opposite of each other on the color wheel.



27.9281, 16.7345, 19.2109



26.6631, 42.4933, 31.9991

Split Complementary

Split-complementary colors differ from the complementary color scheme. The scheme consists of three colors, the original color and two neighbors of the complement color.



8.6957, 16.7345, 34.9606



27.9281, 16.7345, 19.2109



8.9247, 16.7345, 6.9890

Square

The Square scheme is like the rectangle color scheme, but the four colors are evenly spaced on the color wheel.



27.9281, 16.7345, 19.2109



16.2476, 16.7345, 2.0654



7.9493, 16.7345, 17.2658



15.5685, 16.7345, 63.4896

Rectangle

The Rectangle color scheme consists of four colors that form a rectangle on the color wheel.



27.9281, 16.7345, 19.2109



23.4493, 16.7345, 4.2617



7.9493, 16.7345, 17.2658



10.1829, 16.7345, 48.2904

Sweetspot

The Sweet Spot groups the original color and five complimentary colors.



27.9286, 16.7354, 19.2112



76.4574, 69.8955, 80.8734



22.7827, 13.3163, 53.5939



15.8879, 14.1996, 16.5553



0.0000, 0.0000, 0.0000



20.3446, 21.4041, 23.3091

Same Dimension

The Same Dimension uses a secret algorithm to generate beautiful new colors.



27.9286, 16.7354, 19.2112



46.6539, 25.1463, 25.1344



26.2071, 17.1392, 6.7787



10.2433, 10.1459, 11.3720



15.6386, 7.9452, 6.0089



0.7100, 0.3570, 0.4403

Inverse Universe

The Inverse Universe completely reimagines the original color for something new.



27.9286, 16.7354, 19.2112



46.6539, 25.1463, 25.1344



29.4277, 39.7739, 58.3505



10.2433, 10.1459, 11.3720



15.6386, 7.9452, 6.0089



0.7100, 0.3570, 0.4403

Previews

White Background



This preview shows how the XYZ color 27.9281, 16.7345, 19.2109 looks on a white background.

Color Contrast Check

Large Text (above 18pt) WCAG AA ✓ Pass

Any Text WCAG AA ✓ Pass

Large Text (above 18pt) WCAG AAA ✓ Pass

Any Text WCAG AAA × Fail

Black Background



This preview shows how the XYZ color 27.9281, 16.7345, 19.2109 looks on a black background.

Color Contrast Check

Large Text (above 18pt) WCAG AA ✓ Pass

Any Text WCAG AA × Fail

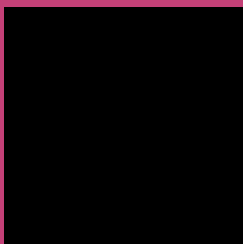
Large Text (above 18pt) WCAG AAA × Fail

Any Text WCAG AAA × Fail

If you want to check with other color combinations, try the [Color Contrast Checker](#).

XYZ 27.9281, 16.7345, 19.2109

Background



This preview shows how black text looks on a background with the XYZ color 27.9281, 16.7345, 19.2109.



This preview shows how white text looks on a background with the XYZ color 27.9281, 16.7345,

Color Blindness Simulation

Color vision deficiency is a very complex topic, and I could not describe the different causes any better than Wikipedia does, so if you want to learn more, you should check out their [article about color blindness](#).

Dichromacy



Original Color

27.9281, 16.7345, 19.2109

Protanopia

17.2358, 17.0155, 31.2301

Deuteranopia

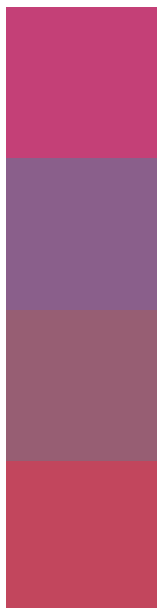
17.2133, 16.9744, 17.6984



Tritanopia

25.7500, 16.6526, 9.0648

Trichromacy



Original Color

27.9281, 16.7345, 19.2109

Protanomaly

19.2336, 15.4518, 26.3949

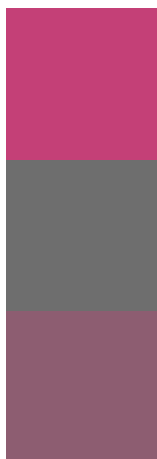
Deuteranomaly

19.8597, 15.8225, 18.2270

Tritanomaly

26.4141, 16.6400, 12.1756

Monochromacy



Original Color

27.9281, 16.7345, 19.2109

Achromatopsia

14.8208, 15.5926, 16.9804

Achromatomaly

17.8795, 14.6837, 17.5147

CSS Examples

Text

The CSS property to change the color of the text to XYZ 27.9281, 16.7345, 19.2109 is called "color". The color property can be set on classes, ids or directly on the HTML element.

This example shows how text in the color `rgb(196, 64, 119)` looks like.

```
.text, #text, p{  
    color:rgb(196, 64, 119)  
}
```

If you want to add a text shadow in that color use the text-shadow property, you can generate a text shadow directly with our [CSS Text Shadow Generator](#).

Here you see how black text with a 4 pixel rgb(196, 64, 119) colored shadow looks like.

```
.shadow{ text-shadow: 4px 4px 2px rgb(196, 64, 119) }
```

Border

The CSS property to change the border of an element to XYZ 27.9281, 16.7345, 19.2109 is called "border". The border property can be set on classes, ids or directly on the HTML element.

This example shows the color as border, it can be applied via the CSS property "border" or "border-color".

```
.border, #border, table{ border:4px solid rgb(196, 64, 119) }
```


If only the border color should be changed use the property border-color.

```
.border{ border-color:rgb(196, 64, 119) }
```

If you want to add a box shadow in that color use:

Here you see how a box with a 4 pixel rgb(196, 64, 119) colored shadow looks like.

```
.boxshadow{ -moz-box-shadow:4px 4px 4px  
4px rgb(196, 64, 119); -webkit-box-  
shadow:4px 4px 4px 4px rgb(196, 64, 119);  
box-shadow:4px 4px 4px 4px rgb(196, 64,  
119) }
```

Background

The CSS property to change the background color of an element to XYZ 27.9281, 16.7345, 19.2109 is called "background". The background property can be set on classes, ids or directly on the HTML element.

```
.background, #background, body{  
background: rgb(196, 64, 119) }
```

If only the background color should be changed can be used:

```
.background{ background-color: rgb(196, 64,  
119) }
```

This example shows the color as background, it is applied via the CSS property "background".

To optimize and compress your CSS code, you can use our [online CSS compressor and optimizer](#) based on csstidy. If you want to create a linear or radial gradient as background or border, check our [CSS Gradient Generator](#).

Hey! You found this booklet interesting? Support Converting Colors with the new Membership Option!

The pro membership hides all ads, plus gives you double the colors in the color bucket, and more awesome pro features!

[Learn more, Memberships starting at \\$2.50/m!](#)

**Follow me
on Twitter!**

@ConvertingColor