

Converting Colors

XYZ(27.9415, 26.1228, 12.7699)

Have a look what the booklet for
XYZ(27.9415, 26.1228, 12.7699)
contains.

XYZ(27.8755, 26.0170, 12.7851)	3
<i>Conversions</i>	4
<i>Details</i>	6
<i>Harmonies</i>	12
<i>Previews</i>	24
<i>Color Blindness Simulation</i>	28
<i>CSS Examples</i>	31

Color

**XYZ(27.8755, 26.0170,
12.7851)**

Conversions

Conversions Part 1

Format	Color
Hex	B18258
RGB	177, 130, 88
RGB Percent	69%, 51%, 35%
CMY	0.3059, 0.4902, 0.6549
CMYK	0.00, 0.27, 0.50, 0.31
HSL	28°, 36%, 52%
HSV	28°, 50%, 69%
XYZ	27.8755, 26.0170, 12.7851
YIQ	139.2650, 41.4940, -3.0980

Conversions

Conversions Part 2

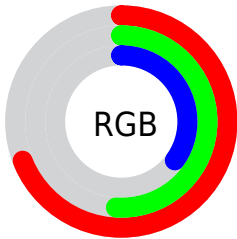
Format	Color
R_{YB}	177, 168, 88
Decimal	11633240
CIE Lab	58.05, 13.00, 29.74
CIE LCh	58, 32.460, 66.383
Yxy	26.0170, 0.4181, 0.3902
Android (android.graphics.Color)	4289823320 (0xFFB18258)
YUV	139.2650, -25.2736, 33.0936
Hunter-Lab	51.0069, 8.2891, 20.8435

Details

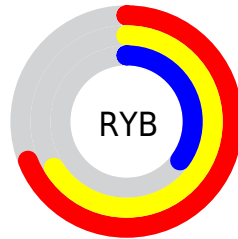
The XYZ color **27.8755, 26.0170, 12.7851** is a dark color, and the websafe version is hex **CC9966**. A complement of this color would be **20.6237, 22.5758, 44.8652**, and the grayscale version is **24.7266, 26.0143, 28.3296**.

A 20% lighter version of the original color is **55.8546, 53.3932, 31.7882**, and **11.3687, 10.1825, 3.4641** is the 20% darker color. If you saturate the color by 10%, you get **26.0423, 23.3850, 8.9855**, and if you desaturate by 10%, it is **30.0009, 28.9486, 17.5608**.

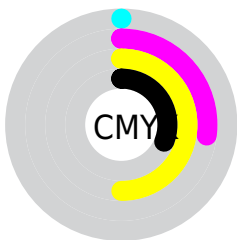
Distribution



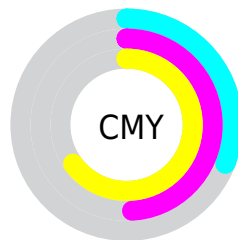
- Red (69%)
- Green (51%)
- Blue (35%)



- Red (69%)
- Yellow (66%)
- Blue (35%)



- Cyan (0%)
- Magenta (27%)
- Yellow (50%)
- Black (31%)



- Cyan (31%)
- Magenta (49%)
- Yellow (65%)

Brightness & Saturation Gradients

These gradients show how the XYZ color 27.8755, 26.0170, 12.7851 changes by changing the brightness by 10 percent. The first figure shows a shift by +10% for each color and the second figure -10%.

Similar to the brightness gradients but the following saturation gradients show a change of the XYZ color 27.8755, 26.0170, 12.7851 by changing the saturation by 10% instead.

■ 27.8755, 26.0170,
12.7851

■ 27.8755, 26.0170,
12.7851

283.9624,
282.8655, 220.6950

■ 18.3718, 16.8364,
7.1517

■ 55.6956, 53.3024,
31.6027

■ 11.3186, 10.1179,
3.4773

■ 74.7428, 72.1759,
45.6240

■ 6.3504, 5.4772,
1.3432

■ 97.7018, 95.0492,
63.2783

■ 3.1020, 2.5299,
0.0968

■ 124.9381,
122.3066, 84.9843

■ 1.2079, 0.8915,
0.0000

■ 156.8169,
154.3325, 111.1604

■ 0.1126, 0.0000,
0.0000

193.7037,

■ 0.0000, 0.0000,

191.5114, 142.2252

0.0000

235.9637,
234.2276, 178.5972

■ 27.8755, 26.0170,
12.7851

■ 27.8755, 26.0170,
12.7851

■ 26.0423, 23.3850,
8.9855

■ 30.0009, 28.9486,
17.5608

■ 24.4834, 21.0377,
6.0906

■ 32.4313, 32.1865,
23.3742

■ 23.1813, 18.9639,
4.0211

■ 35.1809, 35.7418,
30.2834

■ 22.1152, 17.1503,
2.6834

■ 38.2623, 39.6239,
38.3420

■ 21.2658, 15.6161,
1.8934

■ 41.6876, 43.8417,
47.5998

■ 45.4678, 48.4037,
58.1038

■ 49.6138, 53.3181,
69.8983

■ 54.1357, 58.5928,
83.0256

■ 59.0435, 64.2355,
97.5260

Harmonies

Analogous

The Analogous color harmony consists of three colors that are next to each other on the color wheel.



31.3127, 26.0170, 17.3475



27.8755, 26.0170, 12.7851



23.8991, 26.0170, 11.8243

Triad

The Triadic color harmony groups three colors that are evenly spaced from another and form a triangle on the color wheel.



27.8755, 26.0170, 12.7851



17.9632, 26.0170, 30.7987



29.4788, 26.0170, 49.5254

Complementary

The Complementary color scheme is a pair of colors which are on the opposite of each other on the color wheel.



27.8755, 26.0170, 12.7851



20.6237, 22.5758, 44.8652

Split Complementary

Split-complementary colors differ from the complementary color scheme. The scheme consists of three colors, the original color and two neighbors of the complement color.



25.5766, 26.0170, 55.6820



27.8755, 26.0170, 12.7851



19.1385, 26.0170, 43.1743

Square

The Square scheme is like the rectangle color scheme, but the four colors are evenly spaced on the color wheel.



27.8755, 26.0170, 12.7851



18.4401, 26.0170, 20.5240



21.8275, 26.0170, 53.0938



32.3047, 26.0170, 37.8953

Rectangle

The Rectangle color scheme consists of four colors that form a rectangle on the color wheel.



27.8755, 26.0170, 12.7851



21.5252, 26.0170, 13.0462



21.8275, 26.0170, 53.0938



28.2346, 26.0170, 52.4265

Sweetspot

The Sweet Spot groups the original color and five complimentary colors.



27.8761, 26.0183, 12.7856



65.7061, 67.4328, 61.2270



26.0273, 18.0892, 25.2142



13.9966, 14.3069, 12.6358



84.5950, 89.0005, 96.9216



16.2198, 17.0645, 18.5832

Same Dimension

The Same Dimension uses a secret algorithm to generate beautiful new colors.



27.8761, 26.0183, 12.7856



46.4173, 41.5523, 15.6534



35.0352, 40.3364, 15.1720



8.8161, 9.1446, 8.9530



15.4679, 11.4343, 1.3918



0.5452, 0.4769, 0.0633

Inverse Universe

The Inverse Universe completely reimagines the original color for something new.



20.6237, 22.5758, 44.8652



31.9735, 34.6842, 79.5048



15.6987, 12.7258, 43.2235



8.4009, 8.9481, 10.7907



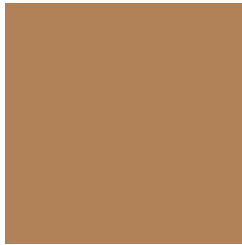
8.6766, 8.1536, 31.2535



0.3309, 0.3722, 1.0026

Previews

White Background



This preview shows how the XYZ color 27.8755, 26.0170, 12.7851 looks on a white background.

Color Contrast Check

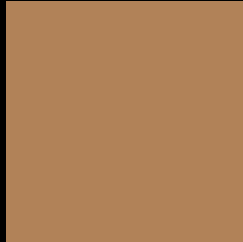
Large Text (above 18pt) WCAG AA ✓ Pass

Any Text WCAG AA × Fail

Large Text (above 18pt) WCAG AAA × Fail

Any Text WCAG AAA × Fail

Black Background



This preview shows how the XYZ color 27.8755, 26.0170, 12.7851 looks on a black background.

Color Contrast Check

Large Text (above 18pt) WCAG AA ✓ Pass

Any Text WCAG AA ✓ Pass

Large Text (above 18pt) WCAG AAA ✓ Pass

Any Text WCAG AAA × Fail

If you want to check with other color combinations, try the [Color Contrast Checker](#).

XYZ 27.8755, 26.0170, 12.7851

Background



This preview shows how black text looks on a background with the XYZ color 27.8755, 26.0170, 12.7851.



This preview shows how white text looks on a background with the XYZ color 27.8755, 26.0170,

12.7851.

Color Blindness Simulation

Color vision deficiency is a very complex topic, and I could not describe the different causes any better than Wikipedia does, so if you want to learn more, you should check out their [article about color blindness](#).

Dichromacy



Original Color

27.8755, 26.0170, 12.7851

Protanopia

24.2587, 26.2043, 13.9046

Deuteranopia

26.6076, 26.1733, 12.6664



Tritanopia

30.5668, 25.9603, 25.9540

Trichromacy



Original Color

27.8755, 26.0170, 12.7851

Protanomaly

25.3904, 25.9407, 13.5664

Deuteranomaly

27.1211, 26.2338, 12.6510

Tritanomaly

29.4941, 25.9094, 20.2761

Monochromacy



Original Color

27.8755, 26.0170, 12.7851

Achromatopsia

24.5403, 25.8183, 28.1161

Achromatomaly

25.3312, 25.7367, 21.4019

CSS Examples

Text

The CSS property to change the color of the text to XYZ 27.8755, 26.0170, 12.7851 is called "color". The color property can be set on classes, ids or directly on the HTML element.

This example shows how text in the color `rgb(177, 130, 88)` looks like.

```
.text, #text, p{  
    color:rgb(177, 130, 88)  
}
```

If you want to add a text shadow in that color use the text-shadow property, you can generate a text shadow directly with our [CSS Text Shadow Generator](#).

Here you see how black text with a 4 pixel rgb(177, 130, 88) colored shadow looks like.

```
.shadow{ text-shadow: 4px 4px 2px rgb(177, 130, 88) }
```

Border

The CSS property to change the border of an element to XYZ 27.8755, 26.0170, 12.7851 is called "border". The border property can be set on classes, ids or directly on the HTML element.

This example shows the color as border, it can be applied via the CSS property "border" or "border-color".

```
.border, #border, table{ border:4px solid rgb(177, 130, 88) }
```


If only the border color should be changed use the property `border-color`.

```
.border{ border-color:rgb(177, 130, 88) }
```

If you want to add a box shadow in that color use:

Here you see how a box with a 4 pixel `rgb(177, 130, 88)` colored shadow looks like.

```
.boxshadow{ -moz-box-shadow:4px 4px 4px  
4px rgb(177, 130, 88); -webkit-box-  
shadow:4px 4px 4px 4px rgb(177, 130, 88);  
box-shadow:4px 4px 4px 4px rgb(177, 130,  
88) }
```

Background

The CSS property to change the background color of an element to XYZ 27.8755, 26.0170, 12.7851 is called "background". The background property can be set on classes, ids or directly on the HTML element.

```
.background, #background, body{  
background: rgb(177, 130, 88) }
```

If only the background color should be changed can be used:

```
.background{ background-color: rgb(177,  
130, 88) }
```

This example shows the color as background, it is applied via the CSS property "background".

To optimize and compress your CSS code, you can use our [online CSS compressor and optimizer](#) based on csstidy. If you want to create a linear or radial gradient as background or border, check our [CSS Gradient Generator](#).

Hey! You found this booklet interesting? Support Converting Colors with the new Membership Option!

The pro membership hides all ads, plus gives you double the colors in the color bucket, and more awesome pro features!

[Learn more, Memberships starting at \\$2.50/m!](#)

**Follow me
on Twitter!**

@ConvertingColor