

Converting Colors

XYZ(27.9698, 27.7895, 20.3636)

Have a look what the booklet for
XYZ(27.9698, 27.7895, 20.3636)
contains.

XYZ(27.9021, 27.7255, 20.4040)	3
<i>Conversions</i>	4
<i>Details</i>	6
<i>Harmonies</i>	12
<i>Previews</i>	24
<i>Color Blindness Simulation</i>	28
<i>CSS Examples</i>	31

Color

**XYZ(27.9021, 27.7255,
20.4040)**

Conversions

Conversions Part 1

Format	Color
Hex	A58B74
RGB	165, 139, 116
RGB Percent	65%, 55%, 45%
CMY	0.3529, 0.4549, 0.5451
CMYK	0.00, 0.16, 0.30, 0.35
HSL	28°, 21%, 55%
HSV	28°, 30%, 65%
XYZ	27.9021, 27.7255, 20.4040
YIQ	144.1520, 22.8790, -1.6410

Conversions

Conversions Part 2

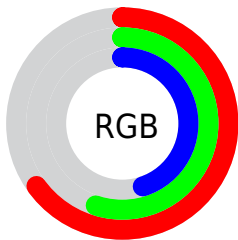
Format	Color
R_{YB}	165, 159, 116
Decimal	10849140
CIE Lab	59.64, 6.27, 15.96
CIE LCh	60, 17.151, 68.556
Yxy	27.7255, 0.3670, 0.3647
Android (android.graphics.Color)	4289039220 (0xFFA58B74)
YUV	144.1520, -13.8789, 18.2837
Hunter-Lab	52.6550, 2.4416, 13.8834

Details

The XYZ color **27.9021, 27.7255, 20.4040** is a dark color, and the websafe version is hex **CC9999**. A complement of this color would be **23.6669, 25.7751, 39.3253**, and the grayscale version is **26.6188, 28.0051, 30.4975**.

A 20% lighter version of the original color is **55.7363, 55.8986, 44.8977**, and **11.2979, 11.0069, 6.9979** is the 20% darker color. If you saturate the color by 10%, you get **25.8093, 24.9417, 15.3844**, and if you desaturate by 10%, it is **30.2684, 30.7831, 26.3565**.

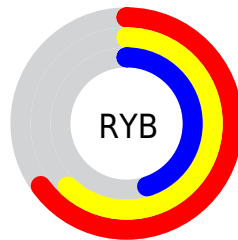
Distribution



Red (65%)

Green (55%)

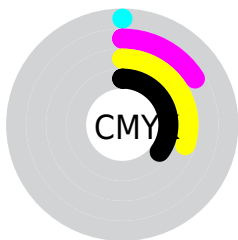
Blue (45%)



Red (65%)

Yellow (62%)

Blue (45%)

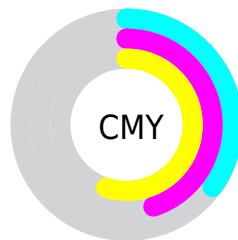


Cyan (0%)

Magenta (16%)

Yellow (30%)

Black (35%)



Cyan (35%)

Magenta (45%)

Yellow (55%)

Brightness & Saturation Gradients

These gradients show how the XYZ color 27.9021, 27.7255, 20.4040 changes by changing the brightness by 10 percent. The first figure shows a shift by +10% for each color and the second figure -10%.

Similar to the brightness gradients but the following saturation gradients show a change of the XYZ color 27.9021, 27.7255, 20.4040 by changing the saturation by 10% instead.

■ 27.9021, 27.7255,
20.4040

■ 27.9021, 27.7255,
20.4040

284.0874,
291.1529, 266.7701

■ 18.3920, 18.1188,
12.5021

■ 55.7378, 56.0459,
44.9613

■ 11.3331, 11.0353,
6.9599

■ 74.7941, 75.5284,
62.4538

■ 6.3603, 6.0906,
3.3590

■ 97.7632, 99.0717,
83.9802

■ 3.1081, 2.9003,
1.2807

125.0104,
127.0601, 109.9591

■ 1.2112, 1.0799,
0.0459

156.9010,
159.8780, 140.8090

■ 0.1152, 0.0000,
0.0000

193.8005,

■ 0.0000, 0.0000,

197.9099, 176.9484

0.0000

236.0742,
241.5400, 218.7959

■ 27.9021, 27.7255,
20.4040

■ 27.9021, 27.7255,
20.4040

■ 25.8093, 24.9417,
15.3844

■ 30.2684, 30.7831,
26.3565

■ 23.9763, 22.4195,
11.2476

■ 32.9167, 34.1186,
33.2850

■ 22.3917, 20.1514,
7.9415

■ 35.8577, 37.7407,
41.2319

■ 21.0420, 18.1278,
5.4077

■ 39.1008, 41.6568,
50.2365

■ 19.9120, 16.3386,
3.5801

■ 42.6552, 45.8738,
60.3363

■ 18.9845, 14.7723,
2.3811

■ 46.5294, 50.3984,
71.5666

■ 18.2248, 13.4103,
1.6423

■ 50.7318, 55.2369,
83.9613

■ 18.2033, 13.3717,
1.6216

■ 55.2702, 60.3958,
97.5529

■ 58.5844, 65.2538,
104.1153

Harmonies

Analogous

The Analogous color harmony consists of three colors that are next to each other on the color wheel.



29.7401, 27.7255, 23.3566



27.9021, 27.7255, 20.4040



25.7383, 27.7255, 19.8757

Triad

The Triadic color harmony groups three colors that are evenly spaced from another and form a triangle on the color wheel.



27.9021, 27.7255, 20.4040



22.4500, 27.7255, 31.9953



29.0303, 27.7255, 40.4931

Complementary

The Complementary color scheme is a pair of colors which are on the opposite of each other on the color wheel.



27.9021, 27.7255, 20.4040



23.6669, 25.7751, 39.3253

Split Complementary

Split-complementary colors differ from the complementary color scheme. The scheme consists of three colors, the original color and two neighbors of the complement color.



26.9759, 27.7255, 43.5644



27.9021, 27.7255, 20.4040



23.2320, 27.7255, 38.2371

Square

The Square scheme is like the rectangle color scheme, but the four colors are evenly spaced on the color wheel.



27.9021, 27.7255, 20.4040



22.6678, 27.7255, 26.0400



24.8609, 27.7255, 42.6868



30.4158, 27.7255, 34.7554

Rectangle

The Rectangle color scheme consists of four colors that form a rectangle on the color wheel.



27.9021, 27.7255, 20.4040



24.4138, 27.7255, 20.8887



24.8609, 27.7255, 42.6868



28.3907, 27.7255, 41.9049

Sweetspot

The Sweet Spot groups the original color and five complimentary colors.



27.9028, 27.7268, 20.4046



59.2177, 61.4353, 60.3206



26.6553, 22.4475, 28.5720



12.7946, 13.2422, 12.7843



78.6606, 82.7571, 90.1225



14.0027, 14.7319, 16.0430

Same Dimension

The Same Dimension uses a secret algorithm to generate beautiful new colors.



27.9028, 27.7268, 20.4046



47.3105, 46.1327, 30.1110



31.8321, 35.5854, 21.7143



7.3351, 7.6086, 7.4621



13.8202, 10.2143, 1.2431



0.3376, 0.3091, 0.0419

Inverse Universe

The Inverse Universe completely reimagines the original color for something new.



23.6669, 25.7751, 39.3253



38.4145, 42.0318, 69.8406



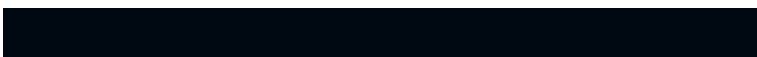
20.4297, 19.3007, 38.2462



6.9969, 7.4529, 8.9728



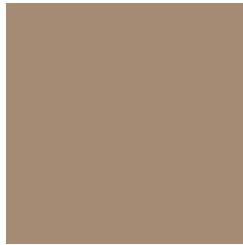
7.7998, 7.3791, 27.9430



0.2108, 0.2488, 0.6028

Previews

White Background



This preview shows how the XYZ color 27.9021, 27.7255, 20.4040 looks on a white background.

Color Contrast Check

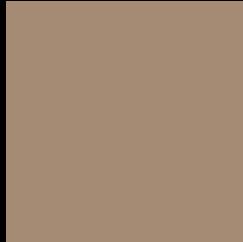
Large Text (above 18pt) WCAG AA ✓ Pass

Any Text WCAG AA × Fail

Large Text (above 18pt) WCAG AAA × Fail

Any Text WCAG AAA × Fail

Black Background



This preview shows how the XYZ color 27.9021, 27.7255, 20.4040 looks on a black background.

Color Contrast Check

Large Text (above 18pt) WCAG AA ✓ Pass

Any Text WCAG AA ✓ Pass

Large Text (above 18pt) WCAG AAA ✓ Pass

Any Text WCAG AAA × Fail

If you want to check with other color combinations, try the [Color Contrast Checker](#).

XYZ 27.9021, 27.7255, 20.4040

Background



This preview shows how black text looks on a background with the XYZ color 27.9021, 27.7255, 20.4040.



This preview shows how white text looks on a background with the XYZ color 27.9021, 27.7255,

Color Blindness Simulation

Color vision deficiency is a very complex topic, and I could not describe the different causes any better than Wikipedia does, so if you want to learn more, you should check out their [article about color blindness](#).

Dichromacy



Original Color

27.9021, 27.7255, 20.4040

Protanopia

26.0414, 27.6283, 21.0998

Deuteranopia

28.1772, 27.6534, 20.3755



Tritanopia

29.9233, 27.6971, 30.5570

Trichromacy



Original Color

27.9021, 27.7255, 20.4040

Protanomaly

26.7885, 27.7985, 20.7834

Deuteranomaly

27.9667, 27.5449, 20.3657

Tritanomaly

29.0436, 27.5450, 26.3402

Monochromacy



Original Color

27.9021, 27.7255, 20.4040

Achromatopsia

26.5089, 27.8894, 30.3716

Achromatomaly

26.9250, 27.7426, 26.4900

CSS Examples

Text

The CSS property to change the color of the text to XYZ 27.9021, 27.7255, 20.4040 is called "color". The color property can be set on classes, ids or directly on the HTML element.

This example shows how text in the color `rgb(165, 139, 116)` looks like.

```
.text, #text, p{  
    color:rgb(165, 139, 116)  
}
```

If you want to add a text shadow in that color use the text-shadow property, you can generate a text shadow directly with our [CSS Text Shadow Generator](#).

Here you see how black text with a 4 pixel rgb(165, 139, 116) colored shadow looks like.

```
.shadow{ text-shadow: 4px 4px 2px rgb(165, 139, 116) }
```

Border

The CSS property to change the border of an element to XYZ 27.9021, 27.7255, 20.4040 is called "border". The border property can be set on classes, ids or directly on the HTML element.

This example shows the color as border, it can be applied via the CSS property "border" or "border-color".

```
.border, #border, table{ border:4px solid rgb(165, 139, 116) }
```


If only the border color should be changed use the property `border-color`.

```
.border{ border-color:rgb(165, 139, 116) }
```

If you want to add a box shadow in that color use:

Here you see how a box with a 4 pixel `rgb(165, 139, 116)` colored shadow looks like.

```
.boxshadow{ -moz-box-shadow:4px 4px 4px  
4px rgb(165, 139, 116); -webkit-box-  
shadow:4px 4px 4px 4px rgb(165, 139, 116);  
box-shadow:4px 4px 4px 4px rgb(165, 139,  
116) }
```

Background

The CSS property to change the background color of an element to XYZ 27.9021, 27.7255, 20.4040 is called "background". The background property can be set on classes, ids or directly on the HTML element.

```
.background, #background, body{  
background: rgb(165, 139, 116) }
```

If only the background color should be changed can be used:

```
.background{ background-color: rgb(165,  
139, 116) }
```

This example shows the color as background, it is applied via the CSS property "background".

To optimize and compress your CSS code, you can use our [online CSS compressor and optimizer](#) based on csstidy. If you want to create a linear or radial gradient as background or border, check our [CSS Gradient Generator](#).

Hey! You found this booklet interesting? Support Converting Colors with the new Membership Option!

The pro membership hides all ads, plus gives you double the colors in the color bucket, and more awesome pro features!

[Learn more, Memberships starting at \\$2.50/m!](#)

**Follow me
on Twitter!**

@ConvertingColor