

Converting Colors

XYZ(28.0369, 28.0520, 23.5130)

Have a look what the booklet for
XYZ(28.0369, 28.0520, 23.5130)
contains.

XYZ(28.1911, 28.2375, 23.7032)	3
<i>Conversions</i>	4
<i>Details</i>	6
<i>Harmonies</i>	12
<i>Previews</i>	24
<i>Color Blindness Simulation</i>	28
<i>CSS Examples</i>	31

Color

**XYZ(28.1911, 28.2375,
23.7032)**

Conversions

Conversions Part 1

Format	Color
Hex	A28D7E
RGB	162, 141, 126
RGB Percent	64%, 55%, 49%
CMY	0.3647, 0.4470, 0.5059
CMYK	0.00, 0.13, 0.22, 0.36
HSL	25°, 16%, 56%
HSV	25°, 22%, 64%
XYZ	28.1911, 28.2375, 23.7032
YIQ	145.5690, 17.3310, -0.2130

Conversions

Conversions Part 2

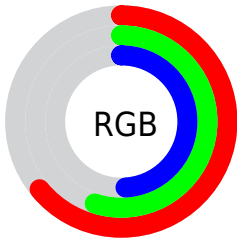
Format	Color
RYB	162, 152, 126
Decimal	10653054
CIELab	60.10, 5.42, 10.90
CIElCh	60, 12.171, 63.563
Yxy	28.2375, 0.3518, 0.3524
Android (android.graphics.Color)	4288843134 (0xFFA28D7E)
YUV	145.5690, -9.6475, 14.4100
Hunter-Lab	53.1390, 1.7040, 10.7503

Details

The XYZ color **28.1911, 28.2375, 23.7032** is a dark color, and the websafe version is hex **999999**. A complement of this color would be **25.5593, 27.9111, 38.2230**, and the grayscale version is **27.1792, 28.5946, 31.1395**.

A 20% lighter version of the original color is **56.2671, 57.0366, 50.6914**, and **11.5110, 11.3330, 8.6020** is the 20% darker color. If you saturate the color by 10%, you get **25.8952, 25.1851, 18.1915**, and if you desaturate by 10%, it is **30.7767, 31.5979, 30.1473**.

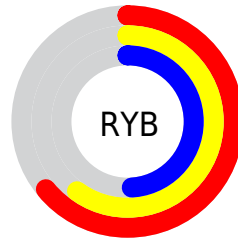
Distribution



Red (64%)

Green (55%)

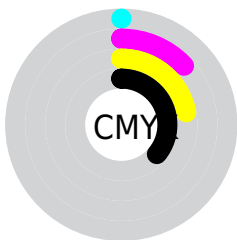
Blue (49%)



Red (64%)

Yellow (60%)

Blue (49%)

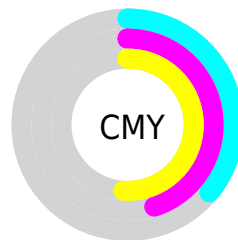


Cyan (0%)

Magenta (13%)

Yellow (22%)

Black (36%)



Cyan (36%)

Magenta (45%)

Yellow (51%)

Brightness & Saturation Gradients

These gradients show how the XYZ color 28.1911, 28.2375, 23.7032 changes by changing the brightness by 10 percent. The first figure shows a shift by +10% for each color and the second figure -10%.

Similar to the brightness gradients but the following saturation gradients show a change of the XYZ color 28.1911, 28.2375, 23.7032 by changing the saturation by 10% instead.

■ 28.1911, 28.2375,
23.7032

■ 28.1911, 28.2375,
23.7032

285.4425,
293.6000, 284.5546

■ 18.6110, 18.5048,
14.9034

■ 56.1959, 56.8634,
50.4832

■ 11.4918, 11.3130,
8.6058

■ 75.3513, 76.5254,
69.3005

■ 6.4684, 6.2778,
4.3917

■ 98.4291, 100.2658,
92.2940

■ 3.1753, 3.0147,
1.8426

125.7947,
128.4693, 119.8824

■ 1.2471, 1.1394,
0.4558

157.8135,
161.5200, 152.4841

■ 0.1431, 0.0114,
0.0000

194.8509,

■ 0.0000, 0.0000,

199.8024, 190.5176

0.0000

237.2721,
243.7010, 234.4016

■ 28.1911, 28.2375,
23.7032

■ 28.1911, 28.2375,
23.7032

■ 25.8952, 25.1851,
18.1915

■ 30.7767, 31.5979,
30.1473

■ 23.8756, 22.4278,
13.5666

■ 33.6603, 35.2713,
37.5631

■ 22.1212, 19.9571,
9.7818

■ 36.8523, 39.2672,
45.9894

■ 20.6193, 17.7628,
6.7851

■ 40.3623, 43.5938,
55.4628

■ 19.3556, 15.8339,
4.5188

■ 44.1991, 48.2586,
66.0177

■ 18.3144, 14.1584,
2.9171

■ 48.3715, 53.2692,
77.6871

■ 17.4774, 12.7232,
1.9021

■ 52.8876, 58.6328,
90.5025

■ 16.9383, 11.7572,
1.3766

■ 57.6585, 64.3176,
103.9833

■ 60.1581, 69.3168,
104.8165

Harmonies

Analogous

The Analogous color harmony consists of three colors that are next to each other on the color wheel.



29.4061, 28.2375, 26.2540



28.1911, 28.2375, 23.7032



26.6537, 28.2375, 22.9724

Triad

The Triadic color harmony groups three colors that are evenly spaced from another and form a triangle on the color wheel.



28.1911, 28.2375, 23.7032



23.9662, 28.2375, 31.2806



28.5247, 28.2375, 38.4408

Complementary

The Complementary color scheme is a pair of colors which are on the opposite of each other on the color wheel.



28.1911, 28.2375, 23.7032



25.5593, 27.9111, 38.2230

Split Complementary

Split-complementary colors differ from the complementary color scheme. The scheme consists of three colors, the original color and two neighbors of the complement color.



27.0250, 28.2375, 40.1005



28.1911, 28.2375, 23.7032



24.4256, 28.2375, 35.7229

Square

The Square scheme is like the rectangle color scheme, but the four colors are evenly spaced on the color wheel.



28.1911, 28.2375, 23.7032



24.2517, 28.2375, 27.0917



25.5306, 28.2375, 39.0612



29.6039, 28.2375, 34.7147

Rectangle

The Rectangle color scheme consists of four colors that form a rectangle on the color wheel.



28.1911, 28.2375, 23.7032



25.6622, 28.2375, 23.5510



25.5306, 28.2375, 39.0612



28.0510, 28.2375, 39.2744

Sweetspot

The Sweet Spot groups the original color and five complimentary colors.



28.1919, 28.2388, 23.7038



58.4677, 60.6848, 61.3557



27.6279, 24.7100, 30.9175



13.0667, 13.5469, 13.6135



78.6606, 82.7571, 90.1225



14.0027, 14.7319, 16.0430

Same Dimension

The Same Dimension uses a secret algorithm to generate beautiful new colors.



28.1919, 28.2388, 23.7038



48.9096, 48.2634, 37.5306



31.0646, 33.9843, 24.6614



7.3050, 7.5483, 7.4521



13.3850, 9.3439, 1.0981



0.3274, 0.2886, 0.0385

Inverse Universe

The Inverse Universe completely reimagines the original color for something new.



25.5593, 27.9111, 38.2230



43.2101, 47.5512, 68.9570



22.9764, 22.7451, 37.3620



7.0275, 7.5140, 8.9830



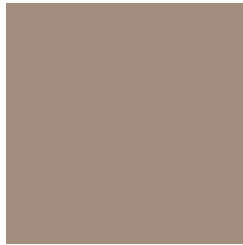
8.3687, 8.5167, 28.1326



0.2210, 0.2692, 0.6062

Previews

White Background



This preview shows how the XYZ color 28.1911, 28.2375, 23.7032 looks on a white background.

Color Contrast Check

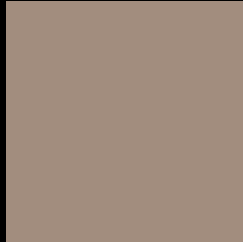
Large Text (above 18pt) WCAG AA ✓ Pass

Any Text WCAG AA × Fail

Large Text (above 18pt) WCAG AAA × Fail

Any Text WCAG AAA × Fail

Black Background



This preview shows how the XYZ color 28.1911, 28.2375, 23.7032 looks on a black background.

Color Contrast Check

Large Text (above 18pt) WCAG AA ✓ Pass

Any Text WCAG AA ✓ Pass

Large Text (above 18pt) WCAG AAA ✓ Pass

Any Text WCAG AAA × Fail

If you want to check with other color combinations, try the [Color Contrast Checker](#).

XYZ 28.1911, 28.2375, 23.7032

Background



This preview shows how black text looks on a background with the XYZ color 28.1911, 28.2375, 23.7032.



This preview shows how white text looks on a background with the XYZ color 28.1911, 28.2375,

Color Blindness Simulation

Color vision deficiency is a very complex topic, and I could not describe the different causes any better than Wikipedia does, so if you want to learn more, you should check out their [article about color blindness](#).

Dichromacy



Original Color

28.1911, 28.2375, 23.7032

Protanopia

26.9706, 28.4847, 24.4987

Deuteranopia

28.8699, 28.3695, 23.6929



Tritanopia

29.9508, 28.3144, 31.9036

Trichromacy



Original Color

28.1911, 28.2375, 23.7032

Protanomaly

27.5143, 28.5467, 24.1386

Deuteranomaly

28.6610, 28.2619, 23.6831

Tritanomaly

29.2761, 28.2512, 28.7210

Monochromacy



Original Color

28.1911, 28.2375, 23.7032

Achromatopsia

27.3213, 28.7441, 31.3023

Achromatomaly

27.5824, 28.4860, 28.4707

CSS Examples

Text

The CSS property to change the color of the text to XYZ 28.1911, 28.2375, 23.7032 is called "color". The color property can be set on classes, ids or directly on the HTML element.

This example shows how text in the color `rgb(162, 141, 126)` looks like.

```
.text, #text, p{  
    color:rgb(162, 141, 126)  
}
```

If you want to add a text shadow in that color use the text-shadow property, you can generate a text shadow directly with our [CSS Text Shadow Generator](#).

Here you see how black text with a 4 pixel rgb(162, 141, 126) colored shadow looks like.

```
.shadow{ text-shadow: 4px 4px 2px rgb(162, 141, 126) }
```

Border

The CSS property to change the border of an element to XYZ 28.1911, 28.2375, 23.7032 is called "border". The border property can be set on classes, ids or directly on the HTML element.

This example shows the color as border, it can be applied via the CSS property "border" or "border-color".

```
.border, #border, table{ border:4px solid rgb(162, 141, 126) }
```


If only the border color should be changed use the property `border-color`.

```
.border{ border-color:rgb(162, 141, 126) }
```

If you want to add a box shadow in that color use:

Here you see how a box with a 4 pixel `rgb(162, 141, 126)` colored shadow looks like.

```
.boxshadow{ -moz-box-shadow:4px 4px 4px  
4px rgb(162, 141, 126); -webkit-box-  
shadow:4px 4px 4px 4px rgb(162, 141, 126);  
box-shadow:4px 4px 4px 4px rgb(162, 141,  
126) }
```

Background

The CSS property to change the background color of an element to XYZ 28.1911, 28.2375, 23.7032 is called "background". The background property can be set on classes, ids or directly on the HTML element.

```
.background, #background, body{  
background: rgb(162, 141, 126) }
```

If only the background color should be changed can be used:

```
.background{ background-color: rgb(162,  
141, 126) }
```

This example shows the color as background, it is applied via the CSS property "background".

To optimize and compress your CSS code, you can use our [online CSS compressor and optimizer](#) based on csstidy. If you want to create a linear or radial gradient as background or border, check our [CSS Gradient Generator](#).

Hey! You found this booklet interesting? Support Converting Colors with the new Membership Option!

The pro membership hides all ads, plus gives you double the colors in the color bucket, and more awesome pro features!

[Learn more, Memberships starting at \\$2.50/m!](#)

**Follow me
on Twitter!**

@ConvertingColor