

# Converting Colors

XYZ(28.0571, 24.9067, 22.6593)

Have a look what the booklet for  
XYZ(28.0571, 24.9067, 22.6593)  
contains.

<b>XYZ(28.0485, 24.9186, 22.7335)</b> .....	3
<b><i>Conversions</i></b> .....	4
<b><i>Details</i></b> .....	6
<b><i>Harmonies</i></b> .....	12
<b><i>Previews</i></b> .....	24
<b><i>Color Blindness Simulation</i></b> .....	28
<b><i>CSS Examples</i></b> .....	31

# Color

**XYZ(28.0485, 24.9186,  
22.7335)**

# Conversions

## Conversions Part 1

<b>Format</b>	<b>Color</b>
Hex	AC7D7D
RGB	172, 125, 125
RGB Percent	67%, 49%, 49%
CMY	0.3255, 0.5098, 0.5098
CMYK	0.00, 0.27, 0.27, 0.33
HSL	0°, 22%, 58%
HSV	0°, 27%, 67%
XYZ	28.0485, 24.9186, 22.7335
YIQ	139.0530, 28.0120, 9.9640

# Conversions

## Conversions Part 2

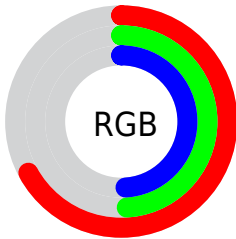
<b>Format</b>	<b>Color</b>
<b>R<sub>YB</sub></b>	172, 125, 125
Decimal	11304317
CIE <sub>Lab</sub>	57.00, 18.25, 7.21
CIE <sub>LCh</sub>	57, 19.618, 21.550
Yxy	24.9186, 0.3705, 0.3292
Android (android.graphics.Color)	4289494397 (0xFFAC7D7D)
YUV	139.0530, -6.9281, 28.8945
Hunter-Lab	49.9185, 12.9391, 7.9416

# Details

The XYZ color **28.0485, 24.9186, 22.7335** is a dark color, and the websafe version is hex **996666**. A complement of this color would be **30.6557, 36.8421, 44.5252**, and the grayscale version is **24.5799, 25.8600, 28.1615**.

A 20% lighter version of the original color is **55.9512, 51.5491, 49.1205**, and **11.4967, 9.6126, 8.0870** is the 20% darker color. If you saturate the color by 10%, you get **25.0516, 20.5334, 16.7749**, and if you desaturate by 10%, it is **31.6141, 30.1362, 29.8210**.

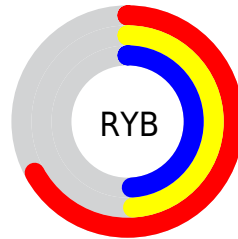
# Distribution



Red (67%)

Green (49%)

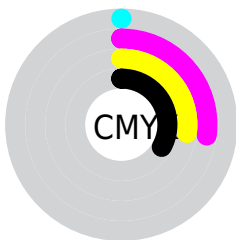
Blue (49%)



Red (67%)

Yellow (49%)

Blue (49%)

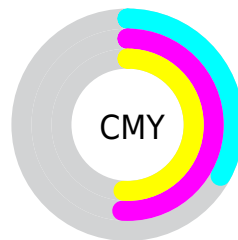


Cyan (0%)

Magenta (27%)

Yellow (27%)

Black (33%)



Cyan (33%)

Magenta (51%)

Yellow (51%)

# Brightness & Saturation Gradients

These gradients show how the XYZ color 28.0485, 24.9186, 22.7335 changes by changing the brightness by 10 percent. The first figure shows a shift by +10% for each color and the second figure -10%.

Similar to the brightness gradients but the following saturation gradients show a change of the XYZ color 28.0485, 24.9186, 22.7335 by changing the saturation by 10% instead.



■ 28.0485, 24.9186,  
22.7335

■ 28.0485, 24.9186,  
22.7335

284.7745,  
277.4323, 279.4306

■ 18.5029, 16.0164,  
14.1934

■ 55.9700, 51.5251,  
48.8730

■ 11.4135, 9.5358,  
8.1150

■ 75.0765, 69.9983,  
67.3095

■ 6.4150, 5.0923,  
4.0798

■ 98.1007, 92.4305,  
89.8818

■ 3.1421, 2.3015,  
1.6692

125.4080,  
119.2063, 117.0086

■ 1.2293, 0.7745,  
0.3395

157.3636,  
150.7100, 149.1083

■ 0.1293, 0.0000,  
0.0000

194.3330,

■ 0.0000, 0.0000,

187.3259, 186.5996

0.0000

236.6815,  
229.4386, 229.9008

■ 28.0485, 24.9186,  
22.7335

■ 28.0485, 24.9186,  
22.7335

■ 25.0516, 20.5334,  
16.7749

■ 31.6141, 30.1362,  
29.8210

■ 22.5920, 16.9343,  
11.8855

■ 35.7735, 36.2225,  
38.0898

■ 20.6387, 14.0760,  
8.0024

■ 40.5527, 43.2158,  
47.5908

■ 19.1564, 11.9069,  
5.0558

■ 45.9756, 51.1510,  
58.3717

■ 18.1054, 10.3689,  
2.9667

■ 52.0649, 60.0612,  
70.4775

■ 17.4395, 9.3945,  
1.6432

■ 58.8422, 69.9781,  
83.9509

■ 17.0885, 8.8809,  
0.9456

■ 66.3280, 80.9318,  
98.8329

■ 17.0134, 8.7709,  
0.7963

■ 70.8232, 87.5106,  
107.7662

# Harmonies

## Analogous

The Analogous color harmony consists of three colors that are next to each other on the color wheel.



28.3423, 24.9186, 29.0396



28.0485, 24.9186, 22.7335



26.5474, 24.9186, 18.3593

# Triad

The Triadic color harmony groups three colors that are evenly spaced from another and form a triangle on the color wheel.



28.0485, 24.9186, 22.7335



20.3815, 24.9186, 19.9824



23.0393, 24.9186, 41.7167

# Complementary

The Complementary color scheme is a pair of colors which are on the opposite of each other on the color wheel.



28.0485, 24.9186, 22.7335



30.6557, 36.8421, 44.5252

# Split Complementary

Split-complementary colors differ from the complementary color scheme. The scheme consists of three colors, the original color and two neighbors of the complement color.



21.0350, 24.9186, 38.3309



28.0485, 24.9186, 22.7335



19.5670, 24.9186, 25.3100

# Square

The Square scheme is like the rectangle color scheme, but the four colors are evenly spaced on the color wheel.



28.0485, 24.9186, 22.7335



22.0941, 24.9186, 16.9594



19.7982, 24.9186, 32.0644



25.3492, 24.9186, 40.7266



# Rectangle

The Rectangle color scheme consists of four colors that form a rectangle on the color wheel.



28.0485, 24.9186, 22.7335



25.1143, 24.9186, 16.7884



19.7982, 24.9186, 32.0644



22.3098, 24.9186, 41.0351

# Sweetspot

The Sweet Spot groups the original color and five complimentary colors.



28.0492, 24.9198, 22.7340



64.2394, 64.7487, 67.7902



31.7933, 26.4167, 42.4529



13.7074, 13.7007, 14.2288



82.5889, 86.8899, 94.6231



15.4596, 16.2647, 17.7123



# Same Dimension

The Same Dimension uses a secret algorithm to generate beautiful new colors.



28.0492, 24.9198, 22.7340



47.3606, 40.0504, 34.2356



31.3835, 31.5885, 23.8455



8.0053, 8.0155, 8.3386



12.6608, 6.5271, 0.5926



0.3522, 0.1816, 0.0165



# Inverse Universe

The Inverse Universe completely reimagines the original color for something new.



30.6557, 36.8421, 44.5252



52.9124, 65.4440, 80.6489



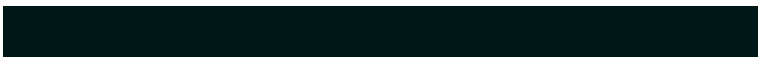
26.5725, 28.6757, 43.1641



8.2363, 9.0720, 10.2697



16.5177, 24.1692, 32.8391



0.4595, 0.6724, 0.9136



# Previews

## White Background



This preview shows how the XYZ color 28.0485, 24.9186, 22.7335 looks on a white background.

## Color Contrast Check

Large Text (above 18pt) WCAG AA ✓ Pass

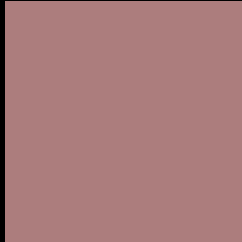
Any Text WCAG AA ✗ Fail

Large Text (above 18pt) WCAG AAA ✗ Fail

Any Text WCAG AAA ✗ Fail



# Black Background



This preview shows how the XYZ color 28.0485, 24.9186, 22.7335 looks on a black background.

## Color Contrast Check

Large Text (above 18pt) WCAG AA ✓ Pass

Any Text WCAG AA ✓ Pass

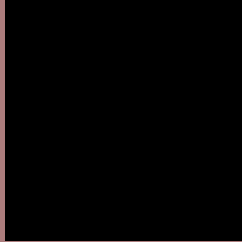
Large Text (above 18pt) WCAG AAA ✓ Pass

Any Text WCAG AAA × Fail

If you want to check with other color combinations, try the [Color Contrast Checker](#).

**XYZ 28.0485, 24.9186, 22.7335**

## **Background**



This preview shows how black text looks on a background with the XYZ color 28.0485, 24.9186, 22.7335.



This preview shows how white text looks on a background with the XYZ color 28.0485, 24.9186,

22.7335.

# Color Blindness Simulation

Color vision deficiency is a very complex topic, and I could not describe the different causes any better than Wikipedia does, so if you want to learn more, you should check out their [article about color blindness](#).

## Dichromacy



### Original Color

28.0485, 24.9186, 22.7335

### Protanopia

24.0269, 25.1927, 25.0691

### Deuteranopia

25.4069, 24.9263, 22.5410



## Tritanopia

28.6749, 24.9930, 25.5031

# Trichromacy



## Original Color

28.0485, 24.9186, 22.7335

## Protanomaly

25.2989, 25.0354, 24.2678

## Deuteranomaly

26.1863, 24.7328, 22.4625

## Tritanomaly

28.4705, 24.9112, 24.4269

# Monochromacy



## Original Color

28.0485, 24.9186, 22.7335

## Achromatopsia

24.5403, 25.8183, 28.1161

## Achromatomaly

25.5907, 25.3507, 26.0987

# CSS Examples

## Text

The CSS property to change the color of the text to XYZ 28.0485, 24.9186, 22.7335 is called "color". The color property can be set on classes, ids or directly on the HTML element.

This example shows how text in the color `rgb(172, 125, 125)` looks like.

```
.text, #text, p{  
    color:rgb(172, 125, 125)  
}
```

If you want to add a text shadow in that color use the text-shadow property, you can generate a text shadow directly with our [CSS Text Shadow Generator](#).

Here you see how black text with a 4 pixel rgb(172, 125, 125) colored shadow looks like.

```
.shadow{ text-shadow: 4px 4px 2px rgb(172, 125, 125) }
```

## Border

The CSS property to change the border of an element to XYZ 28.0485, 24.9186, 22.7335 is called "border". The border property can be set on classes, ids or directly on the HTML element.

This example shows the color as border, it can be applied via the CSS property "border" or "border-color".

```
.border, #border, table{ border:4px solid rgb(172, 125, 125) }
```



If only the border color should be changed use the property `border-color`.

```
.border{ border-color:rgb(172, 125, 125) }
```

If you want to add a box shadow in that color use:

Here you see how a box with a 4 pixel `rgb(172, 125, 125)` colored shadow looks like.

```
.boxshadow{ -moz-box-shadow:4px 4px 4px  
4px rgb(172, 125, 125); -webkit-box-  
shadow:4px 4px 4px 4px rgb(172, 125, 125);  
box-shadow:4px 4px 4px 4px rgb(172, 125,  
125) }
```

# Background

The CSS property to change the background color of an element to XYZ 28.0485, 24.9186, 22.7335 is called "background". The background property can be set on classes, ids or directly on the HTML element.

```
.background, #background, body{  
background: rgb(172, 125, 125) }
```

If only the background color should be changed can be used:

```
.background{ background-color: rgb(172,  
125, 125) }
```

This example shows the color as background, it is applied via the CSS property "background".

To optimize and compress your CSS code, you can use our [online CSS compressor and optimizer](#) based on csstidy. If you want to create a linear or radial gradient as background or border, check our [CSS Gradient Generator](#).

Hey! You found this booklet interesting? Support Converting Colors with the new Membership Option!

The pro membership hides all ads, plus gives you double the colors in the color bucket, and more awesome pro features!

**[Learn more, Memberships starting at \\$2.50/m!](#)**

**Follow me  
on Twitter!**

@ConvertingColor