

Converting Colors

XYZ(28.2008, 28.0538, 22.3409)

Have a look what the booklet for
XYZ(28.2008, 28.0538, 22.3409)
contains.

| | |
|--|----|
| XYZ(28.2008, 28.0538, 22.3409) | 3 |
| <i>Conversions</i> | 4 |
| <i>Details</i> | 6 |
| <i>Harmonies</i> | 12 |
| <i>Previews</i> | 24 |
| <i>Color Blindness Simulation</i> | 28 |
| <i>CSS Examples</i> | 31 |

Color

**XYZ(28.2008, 28.0538,
22.3409)**

Conversions

Conversions Part 1

| Format | Color |
|---------------|----------------------------|
| Hex | A48C7A |
| RGB | 164, 140, 122 |
| RGB Percent | 64%, 55%, 48% |
| CMY | 0.3569, 0.4510, 0.5216 |
| CMYK | 0.00, 0.15, 0.26, 0.36 |
| HSL | 26°, 19%, 56% |
| HSV | 26°, 26%, 64% |
| XYZ | 28.2008, 28.0538, 22.3409 |
| YIQ | 145.1240, 20.0820, -0.5100 |

Conversions

Conversions Part 2

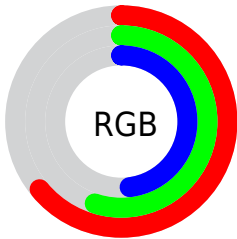
| Format | Color |
|-------------------------------------|--------------------------------|
| RYB | 164, 154, 122 |
| Decimal | 10783866 |
| CIELab | 59.94, 6.17, 12.96 |
| CIELCh | 60, 14.357, 64.549 |
| Yxy | 28.0538, 0.3588, 0.3569 |
| Android (android.graphics.Color) | 4288973946 (0xFFA48C7A) |
| YUV | 145.1240, -11.4001, 16.5543 |
| Hunter-Lab | 52.9658, 2.3492, 12.0677 |

Details

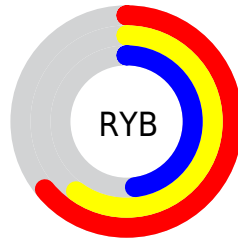
The XYZ color **28.2008, 28.0538, 22.3409** is a dark color, and the websafe version is hex **999999**. A complement of this color would be **25.0056, 27.3750, 39.0882**, and the grayscale version is **27.0038, 28.4101, 30.9386**.

A 20% lighter version of the original color is **56.1452, 56.6996, 48.0294**, and **11.5409, 11.2381, 7.8642** is the 20% darker color. If you saturate the color by 10%, you get **25.9580, 25.0593, 16.9959**, and if you desaturate by 10%, it is **30.7333, 31.3527, 28.6291**.

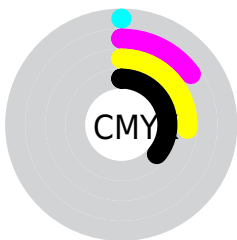
Distribution



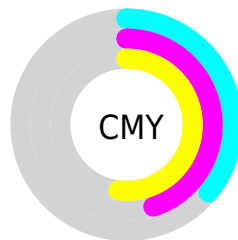
- Red (64%)
- Green (55%)
- Blue (48%)



- Red (64%)
- Yellow (60%)
- Blue (48%)



- Cyan (0%)
- Magenta (15%)
- Yellow (26%)
- Black (36%)



- Cyan (36%)
- Magenta (45%)
- Yellow (52%)

Brightness & Saturation Gradients

These gradients show how the XYZ color 28.2008, 28.0538, 22.3409 changes by changing the brightness by 10 percent. The first figure shows a shift by +10% for each color and the second figure -10%.

Similar to the brightness gradients but the following saturation gradients show a change of the XYZ color 28.2008, 28.0538, 22.3409 by changing the saturation by 10% instead.

■ 28.2008, 28.0538,
22.3409

■ 28.2008, 28.0538,
22.3409

285.4879,
292.7239, 277.3328

■ 18.6183, 18.3662,
13.9069

■ 56.2113, 56.5703,
48.2182

■ 11.4972, 11.2132,
7.9179

■ 75.3700, 76.1681,
66.4985

■ 6.4720, 6.2104,
3.9555

■ 98.4514, 99.8380,
88.8981

■ 3.1775, 2.9735,
1.6009

125.8210,
127.9644, 115.8354

■ 1.2483, 1.1179,
0.2915

157.8441,
160.9319, 147.7290

■ 0.1440, 0.0000,
0.0000

194.8861,

■ 0.0000, 0.0000,

199.1247, 184.9974

0.0000

237.3122,
242.9272, 228.0591

■ 28.2008, 28.0538,
22.3409

■ 28.2008, 28.0538,
22.3409

■ 25.9580, 25.0593,
16.9959

■ 30.7333, 31.3527,
28.6291

■ 23.9910, 22.3561,
12.5462

■ 33.5639, 34.9609,
35.9020

■ 22.2884, 19.9358,
8.9420

■ 36.7036, 38.8881,
44.2004

■ 20.8366, 17.7879,
6.1282

■ 40.1622, 43.1424,
53.5624

■ 19.6208, 15.9014,
4.0427

■ 43.9488, 47.7315,
64.0243

■ 18.6242, 14.2638,
2.6141

■ 48.0722, 52.6627,
75.6204

■ 17.8258, 12.8612,
1.7497

■ 52.5411, 57.9435,
88.3837

■ 17.5188, 12.3103,
1.4528

■ 57.3634, 63.5807,
102.3458

■ 60.1060, 68.6046,
104.6818

Harmonies

Analogous

The Analogous color harmony consists of three colors that are next to each other on the color wheel.



29.6600, 28.0538, 25.1941



28.2008, 28.0538, 22.3409



26.3870, 28.0538, 21.5836

Triad

The Triadic color harmony groups three colors that are evenly spaced from another and form a triangle on the color wheel.



28.2008, 28.0538, 22.3409



23.3172, 28.0538, 31.3497



28.7041, 28.0538, 39.5927

Complementary

The Complementary color scheme is a pair of colors which are on the opposite of each other on the color wheel.



28.2008, 28.0538, 22.3409



25.0056, 27.3750, 39.0882

Split Complementary

Split-complementary colors differ from the complementary color scheme. The scheme consists of three colors, the original color and two neighbors of the complement color.



26.9435, 28.0538, 41.6981



28.2008, 28.0538, 22.3409



23.8774, 28.0538, 36.6064

Square

The Square scheme is like the rectangle color scheme, but the four colors are evenly spaced on the color wheel.



28.2008, 28.0538, 22.3409



23.6198, 28.0538, 26.4276



25.1846, 28.0538, 40.5477



29.9597, 28.0538, 35.0710

Rectangle

The Rectangle color scheme consists of four colors that form a rectangle on the color wheel.



28.2008, 28.0538, 22.3409



25.2329, 28.0538, 22.2866



25.1846, 28.0538, 40.5477



28.1488, 28.0538, 40.6285

Sweetspot

The Sweet Spot groups the original color and five complimentary colors.



28.2015, 28.0551, 22.3415



59.5656, 61.7410, 61.6395



27.4970, 23.9028, 30.5633



12.8566, 13.2874, 13.0478



78.6606, 82.7571, 90.1225



14.0027, 14.7319, 16.0430

Same Dimension

The Same Dimension uses a secret algorithm to generate beautiful new colors.



28.2015, 28.0551, 22.3415



48.6959, 47.6111, 34.5565



31.4806, 34.6133, 23.4345



7.3118, 7.5619, 7.4543



13.4780, 9.5300, 1.1291



0.3297, 0.2933, 0.0392

Inverse Universe

The Inverse Universe completely reimagines the original color for something new.



25.0056, 27.3750, 39.0882



41.8429, 46.1494, 70.4547



22.1243, 21.6124, 38.1278



7.0206, 7.5002, 8.9807



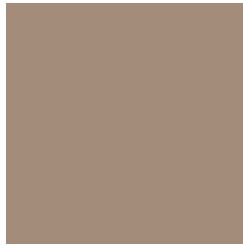
8.2347, 8.2487, 28.0879



0.2187, 0.2646, 0.6054

Previews

White Background



This preview shows how the XYZ color 28.2008, 28.0538, 22.3409 looks on a white background.

Color Contrast Check

Large Text (above 18pt) WCAG AA ✓ Pass

Any Text WCAG AA × Fail

Large Text (above 18pt) WCAG AAA × Fail

Any Text WCAG AAA × Fail

Black Background



This preview shows how the XYZ color 28.2008, 28.0538, 22.3409 looks on a black background.

Color Contrast Check

Large Text (above 18pt) WCAG AA ✓ Pass

Any Text WCAG AA ✓ Pass

Large Text (above 18pt) WCAG AAA ✓ Pass

Any Text WCAG AAA × Fail

If you want to check with other color combinations, try the [Color Contrast Checker](#).

XYZ 28.2008, 28.0538, 22.3409

Background



This preview shows how black text looks on a background with the XYZ color 28.2008, 28.0538, 22.3409.



This preview shows how white text looks on a background with the XYZ color 28.2008, 28.0538,

Color Blindness Simulation

Color vision deficiency is a very complex topic, and I could not describe the different causes any better than Wikipedia does, so if you want to learn more, you should check out their [article about color blindness](#).

Dichromacy



Original Color

28.2008, 28.0538, 22.3409

Protanopia

26.5602, 28.0772, 23.0883

Deuteranopia

28.4714, 27.9774, 22.3119



Tritanopia

30.0070, 27.9304, 31.4133

Trichromacy



Original Color

28.2008, 28.0538, 22.3409

Protanomaly

27.1079, 28.1429, 22.7423

Deuteranomaly

28.2625, 27.8697, 22.3022

Tritanomaly

29.2590, 27.8333, 27.8750

Monochromacy



Original Color

28.2008, 28.0538, 22.3409

Achromatopsia

26.9133, 28.3149, 30.8349

Achromatomaly

27.2867, 28.1265, 27.6577

CSS Examples

Text

The CSS property to change the color of the text to XYZ 28.2008, 28.0538, 22.3409 is called "color". The color property can be set on classes, ids or directly on the HTML element.

This example shows how text in the color `rgb(164, 140, 122)` looks like.

```
.text, #text, p{  
    color:rgb(164, 140, 122)  
}
```

If you want to add a text shadow in that color use the text-shadow property, you can generate a text shadow directly with our [CSS Text Shadow Generator](#).

Here you see how black text with a 4 pixel rgb(164, 140, 122) colored shadow looks like.

```
.shadow{ text-shadow: 4px 4px 2px rgb(164, 140, 122) }
```

Border

The CSS property to change the border of an element to XYZ 28.2008, 28.0538, 22.3409 is called "border". The border property can be set on classes, ids or directly on the HTML element.

This example shows the color as border, it can be applied via the CSS property "border" or "border-color".

```
.border, #border, table{ border:4px solid rgb(164, 140, 122) }
```


If only the border color should be changed use the property `border-color`.

```
.border{ border-color:rgb(164, 140, 122) }
```

If you want to add a box shadow in that color use:

Here you see how a box with a 4 pixel `rgb(164, 140, 122)` colored shadow looks like.

```
.boxshadow{ -moz-box-shadow:4px 4px 4px  
4px rgb(164, 140, 122); -webkit-box-  
shadow:4px 4px 4px 4px rgb(164, 140, 122);  
box-shadow:4px 4px 4px 4px rgb(164, 140,  
122) }
```

Background

The CSS property to change the background color of an element to XYZ 28.2008, 28.0538, 22.3409 is called "background". The background property can be set on classes, ids or directly on the HTML element.

```
.background, #background, body{  
background: rgb(164, 140, 122) }
```

If only the background color should be changed can be used:

```
.background{ background-color: rgb(164,  
140, 122) }
```

This example shows the color as background, it is applied via the CSS property "background".

To optimize and compress your CSS code, you can use our [online CSS compressor and optimizer](#) based on csstidy. If you want to create a linear or radial gradient as background or border, check our [CSS Gradient Generator](#).

Hey! You found this booklet interesting? Support Converting Colors with the new Membership Option!

The pro membership hides all ads, plus gives you double the colors in the color bucket, and more awesome pro features!

[Learn more, Memberships starting at \\$2.50/m!](#)

**Follow me
on Twitter!**

@ConvertingColor