

Converting Colors

XYZ(28.2068, 26.0203, 20.3654)

Have a look what the booklet for
XYZ(28.2068, 26.0203, 20.3654)
contains.

XYZ(28.2068, 26.0203, 20.3654)	3
<i>Conversions</i>	4
<i>Details</i>	6
<i>Harmonies</i>	12
<i>Previews</i>	24
<i>Color Blindness Simulation</i>	28
<i>CSS Examples</i>	31

Color

**XYZ(28.2068, 26.0203,
20.3654)**

Conversions

Conversions Part 1

Format	Color
Hex	AC8275
RGB	172, 130, 117
RGB Percent	67%, 51%, 46%
CMY	0.3255, 0.4902, 0.5412
CMYK	0.00, 0.24, 0.32, 0.33
HSL	14°, 25%, 57%
HSV	14°, 32%, 67%
XYZ	28.2068, 26.0203, 20.3654
YIQ	141.0760, 29.2050, 4.8610

Conversions

Conversions Part 2

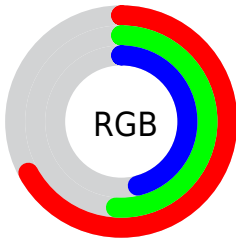
Format	Color
R_{YB}	172, 134, 117
Decimal	11305589
CIE _{Lab}	58.06, 14.30, 13.31
CIE _{LCh}	58, 19.534, 42.934
Yxy	26.0203, 0.3781, 0.3488
Android (android.graphics.Color)	4289495669 (0xFFAC8275)
YUV	141.0760, -11.8695, 27.1203
Hunter-Lab	51.0101, 9.4366, 12.0360

Details

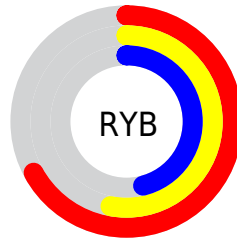
The XYZ color **28.2068, 26.0203, 20.3654** is a dark color, and the websafe version is hex **996666**. A complement of this color would be **27.1803, 31.5557, 43.6881**, and the grayscale version is **25.3849, 26.7069, 29.0838**.

A 20% lighter version of the original color is **56.0898, 53.2255, 44.8534**, and **11.4878, 10.1661, 6.9870** is the 20% darker color. If you saturate the color by 10%, you get **25.6502, 22.3795, 14.9739**, and if you desaturate by 10%, it is **31.1736, 30.1839, 26.8109**.

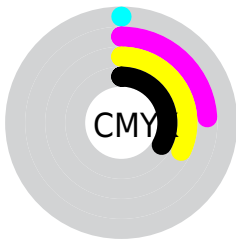
Distribution



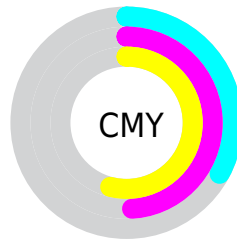
- Red (67%)
- Green (51%)
- Blue (46%)



- Red (67%)
- Yellow (53%)
- Blue (46%)



- Cyan (0%)
- Magenta (24%)
- Yellow (32%)
- Black (33%)



- Cyan (33%)
- Magenta (49%)
- Yellow (54%)

Brightness & Saturation Gradients

These gradients show how the XYZ color 28.2068, 26.0203, 20.3654 changes by changing the brightness by 10 percent. The first figure shows a shift by +10% for each color and the second figure -10%.

Similar to the brightness gradients but the following saturation gradients show a change of the XYZ color 28.2068, 26.0203, 20.3654 by changing the saturation by 10% instead.

■ 28.2068, 26.0203,
20.3654

■ 28.2068, 26.0203,
20.3654

285.5160,
282.8817, 266.5558

■ 18.6229, 16.8388,
12.4742

■ 56.2208, 53.3077,
44.8960

■ 11.5005, 10.1196,
6.9411

■ 75.3815, 72.1824,
62.3724

■ 6.4743, 5.4784,
3.3474

■ 98.4652, 95.0570,
83.8811

■ 3.1789, 2.5306,
1.2746

125.8373,
122.3158, 109.8404

■ 1.2491, 0.8919,
0.0409

157.8630,
154.3433, 140.6690

■ 0.1446, 0.0000,
0.0000

194.9078,

■ 0.0000, 0.0000,

191.5239, 176.7854

0.0000

237.3370,
234.2419, 218.6082

■ 28.2068, 26.0203,
20.3654

■ 28.2068, 26.0203,
20.3654

■ 25.6502, 22.3795,
14.9739

■ 31.1736, 30.1839,
26.8109

■ 23.4832, 19.2370,
10.5785

■ 34.5659, 34.8862,
34.3612

■ 21.6864, 16.5717,
7.1178

■ 38.4007, 40.1471,
43.0653

■ 20.2379, 14.3596,
4.5231

■ 42.6935, 45.9842,
52.9693

■ 19.1131, 12.5746,
2.7162

■ 47.4589, 52.4144,
64.1163

■ 18.2840, 11.1874,
1.6041

■ 52.7109, 59.4540,
76.5476

■ 17.7947, 10.3335,
1.0567

■ 58.4630, 67.1185,
90.3023

■ 64.7281, 75.4229,
105.4181

■ 68.6939, 83.2518,
107.0564

Harmonies

Analogous

The Analogous color harmony consists of three colors that are next to each other on the color wheel.



29.4258, 26.0203, 25.5197



28.2068, 26.0203, 20.3654



26.0880, 26.0203, 17.6304

Triad

The Triadic color harmony groups three colors that are evenly spaced from another and form a triangle on the color wheel.



28.2068, 26.0203, 20.3654



20.6401, 26.0203, 24.6844



25.7618, 26.0203, 42.9885

Complementary

The Complementary color scheme is a pair of colors which are on the opposite of each other on the color wheel.



28.2068, 26.0203, 20.3654



27.1803, 31.5557, 43.6881

Split Complementary

Split-complementary colors differ from the complementary color scheme. The scheme consists of three colors, the original color and two neighbors of the complement color.



23.4229, 26.0203, 42.6689



28.2068, 26.0203, 20.3654



20.5651, 26.0203, 31.3430

Square

The Square scheme is like the rectangle color scheme, but the four colors are evenly spaced on the color wheel.



28.2068, 26.0203, 20.3654



21.7660, 26.0203, 19.8381



21.5541, 26.0203, 38.1440



27.9549, 26.0203, 38.9579

Rectangle

The Rectangle color scheme consists of four colors that form a rectangle on the color wheel.



28.2068, 26.0203, 20.3654



24.4998, 26.0203, 17.2286



21.5541, 26.0203, 38.1440



24.9647, 26.0203, 43.4029

Sweetspot

The Sweet Spot groups the original color and five complimentary colors.



28.2075, 26.0215, 20.3659



63.8977, 64.9281, 65.0169



29.6472, 24.0025, 35.9473



13.6905, 13.8406, 13.6882



82.5889, 86.8899, 94.6231



15.4596, 16.2647, 17.7123

Same Dimension

The Same Dimension uses a secret algorithm to generate beautiful new colors.



28.2075, 26.0215, 20.3659



47.9820, 42.6748, 30.1833



32.3378, 34.2821, 21.7427



8.1533, 8.3113, 8.3879



13.2786, 7.7627, 0.7985



0.4111, 0.2994, 0.0361

Inverse Universe

The Inverse Universe completely reimagines the original color for something new.



27.1803, 31.5557, 43.6881



45.8275, 54.2031, 78.8526



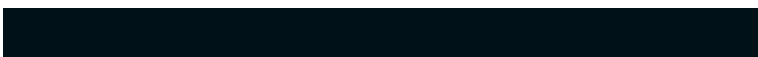
22.9889, 23.1730, 42.2910



8.0734, 8.7462, 10.2154



11.6583, 14.4505, 31.2193



0.3628, 0.4790, 0.8813

Previews

White Background



This preview shows how the XYZ color 28.2068, 26.0203, 20.3654 looks on a white background.

Color Contrast Check

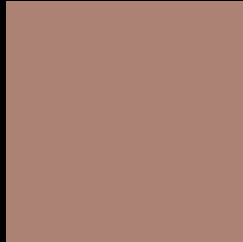
Large Text (above 18pt) WCAG AA ✓ Pass

Any Text WCAG AA × Fail

Large Text (above 18pt) WCAG AAA × Fail

Any Text WCAG AAA × Fail

Black Background



This preview shows how the XYZ color 28.2068, 26.0203, 20.3654 looks on a black background.

Color Contrast Check

Large Text (above 18pt) WCAG AA ✓ Pass

Any Text WCAG AA ✓ Pass

Large Text (above 18pt) WCAG AAA ✓ Pass

Any Text WCAG AAA × Fail

If you want to check with other color combinations, try the [Color Contrast Checker](#).

XYZ 28.2068, 26.0203, 20.3654

Background



This preview shows how black text looks on a background with the XYZ color 28.2068, 26.0203, 20.3654.



This preview shows how white text looks on a background with the XYZ color 28.2068, 26.0203,

Color Blindness Simulation

Color vision deficiency is a very complex topic, and I could not describe the different causes any better than Wikipedia does, so if you want to learn more, you should check out their [article about color blindness](#).

Dichromacy



Original Color

28.2068, 26.0203, 20.3654

Protanopia

24.5995, 25.9814, 22.1307

Deuteranopia

26.5778, 25.9925, 20.1393



Tritanopia

29.5603, 25.9836, 27.1242

Trichromacy



Original Color

28.2068, 26.0203, 20.3654

Protanomaly

25.7119, 25.9329, 21.4197

Deuteranomaly

27.2658, 26.1430, 20.1320

Tritanomaly

28.9820, 25.9343, 24.5974

Monochromacy



Original Color

28.2068, 26.0203, 20.3654

Achromatopsia

25.3171, 26.6356, 29.0061

Achromatomaly

26.0594, 26.2327, 25.5197

CSS Examples

Text

The CSS property to change the color of the text to XYZ 28.2068, 26.0203, 20.3654 is called "color". The color property can be set on classes, ids or directly on the HTML element.

This example shows how text in the color `rgb(172, 130, 117)` looks like.

```
.text, #text, p{  
    color:rgb(172, 130, 117)  
}
```

If you want to add a text shadow in that color use the text-shadow property, you can generate a text shadow directly with our [CSS Text Shadow Generator](#).

Here you see how black text with a 4 pixel rgb(172, 130, 117) colored shadow looks like.

```
.shadow{ text-shadow: 4px 4px 2px rgb(172, 130, 117) }
```

Border

The CSS property to change the border of an element to XYZ 28.2068, 26.0203, 20.3654 is called "border". The border property can be set on classes, ids or directly on the HTML element.

This example shows the color as border, it can be applied via the CSS property "border" or "border-color".

```
.border, #border, table{ border:4px solid rgb(172, 130, 117) }
```


If only the border color should be changed use the property `border-color`.

```
.border{ border-color:rgb(172, 130, 117) }
```

If you want to add a box shadow in that color use:

Here you see how a box with a 4 pixel `rgb(172, 130, 117)` colored shadow looks like.

```
.boxshadow{ -moz-box-shadow:4px 4px 4px  
4px rgb(172, 130, 117); -webkit-box-  
shadow:4px 4px 4px 4px rgb(172, 130, 117);  
box-shadow:4px 4px 4px 4px rgb(172, 130,  
117) }
```

Background

The CSS property to change the background color of an element to XYZ 28.2068, 26.0203, 20.3654 is called "background". The background property can be set on classes, ids or directly on the HTML element.

```
.background, #background, body{  
background: rgb(172, 130, 117) }
```

If only the background color should be changed can be used:

```
.background{ background-color: rgb(172,  
130, 117) }
```

This example shows the color as background, it is applied via the CSS property "background".

To optimize and compress your CSS code, you can use our [online CSS compressor and optimizer](#) based on csstidy. If you want to create a linear or radial gradient as background or border, check our [CSS Gradient Generator](#).

Hey! You found this booklet interesting? Support Converting Colors with the new Membership Option!

The pro membership hides all ads, plus gives you double the colors in the color bucket, and more awesome pro features!

[Learn more, Memberships starting at \\$2.50/m!](#)

**Follow me
on Twitter!**

@ConvertingColor