

Converting Colors

XYZ(28.3214, 27.9417, 20.4236)

Have a look what the booklet for
XYZ(28.3214, 27.9417, 20.4236)
contains.

XYZ(28.3214, 27.9417, 20.4236)	3
<i>Conversions</i>	4
<i>Details</i>	6
<i>Harmonies</i>	12
<i>Previews</i>	24
<i>Color Blindness Simulation</i>	28
<i>CSS Examples</i>	31

Color

**XYZ(28.3214, 27.9417,
20.4236)**

Conversions

Conversions Part 1

Format	Color
Hex	A78B74
RGB	167, 139, 116
RGB Percent	65%, 55%, 45%
CMY	0.3451, 0.4549, 0.5451
CMYK	0.00, 0.17, 0.31, 0.35
HSL	27°, 22%, 55%
HSV	27°, 31%, 65%
XYZ	28.3214, 27.9417, 20.4236
YIQ	144.7500, 24.0710, -1.2170

Conversions

Conversions Part 2

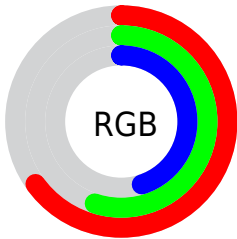
Format	Color
R_{YB}	167, 158, 116
Decimal	10980212
CIE _{Lab}	59.84, 7.08, 16.27
CIE _{LCh}	60, 17.740, 66.474
Yxy	27.9417, 0.3693, 0.3644
Android (android.graphics.Color)	4289170292 (0xFFA78B74)
YUV	144.7500, -14.1737, 19.5133
Hunter-Lab	52.8599, 3.1323, 14.0939

Details

The XYZ color **28.3214, 27.9417, 20.4236** is a dark color, and the websafe version is hex **CC9999**. A complement of this color would be **24.1506, 26.4488, 40.3917**, and the grayscale version is **26.8616, 28.2605, 30.7757**.

A 20% lighter version of the original color is **56.3489, 56.2144, 44.9263**, and **11.5552, 11.1395, 7.0100** is the 20% darker color. If you saturate the color by 10%, you get **26.1639, 25.0440, 15.3350**, and if you desaturate by 10%, it is **30.7663, 31.1345, 26.4702**.

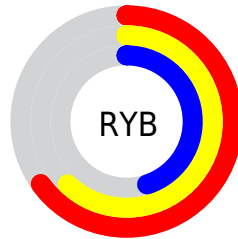
Distribution



Red (65%)

Green (55%)

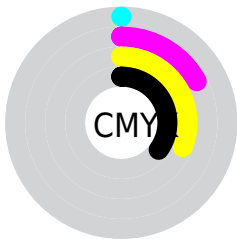
Blue (45%)



Red (65%)

Yellow (62%)

Blue (45%)

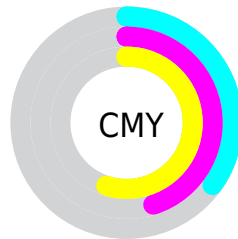


Cyan (0%)

Magenta (17%)

Yellow (31%)

Black (35%)



Cyan (35%)

Magenta (45%)

Yellow (55%)

Brightness & Saturation Gradients

These gradients show how the XYZ color 28.3214, 27.9417, 20.4236 changes by changing the brightness by 10 percent. The first figure shows a shift by +10% for each color and the second figure -10%.

Similar to the brightness gradients but the following saturation gradients show a change of the XYZ color 28.3214, 27.9417, 20.4236 by changing the saturation by 10% instead.

■ 28.3214, 27.9417,
20.4236

■ 28.3214, 27.9417,
20.4236

286.0518,
292.1882, 266.8789

■ 18.7098, 18.2817,
12.5162

■ 56.4022, 56.3914,
44.9945

■ 11.5635, 11.1524,
6.9695

■ 75.6021, 75.9498,
62.4951

■ 6.5173, 6.1695,
3.3649

■ 98.7288, 99.5765,
84.0305

■ 3.2057, 2.9484,
1.2838

126.1477,
127.6560, 110.0193

■ 1.2635, 1.1049,
0.0485

158.2241,
160.5724, 140.8800

■ 0.1556, 0.0000,
0.0000

195.3233,

■ 0.0000, 0.0000,

198.7104, 177.0311

0.0000

237.8108,
242.4542, 218.8912

■ 28.3214, 27.9417,
20.4236

■ 28.3214, 27.9417,
20.4236

■ 26.1639, 25.0440,
15.3350

■ 30.7663, 31.1345,
26.4702

■ 24.2796, 22.4284,
11.1525

■ 33.5078, 34.6272,
33.5197

■ 22.6562, 20.0864,
7.8219

■ 36.5572, 38.4295,
41.6160

■ 21.2793, 18.0075,
5.2823

■ 39.9246, 42.5493,
50.8000

■ 20.1330, 16.1805,
3.4645

■ 43.6195, 46.9942,
61.1104

■ 19.1987, 14.5929,
2.2873

■ 47.6511, 51.7716,
72.5838

■ 18.4746, 13.2919,
1.5919

■ 52.0281, 56.8886,
85.2555

■ 56.7590, 62.3521,
99.1589

■ 59.9783, 67.4192,
104.4598

Harmonies

Analogous

The Analogous color harmony consists of three colors that are next to each other on the color wheel.



30.1887, 27.9417, 23.6402



28.3214, 27.9417, 20.4236



26.0732, 27.9417, 19.7036

Triad

The Triadic color harmony groups three colors that are evenly spaced from another and form a triangle on the color wheel.



28.3214, 27.9417, 20.4236



22.4889, 27.9417, 31.8414



29.2119, 27.9417, 41.5076

Complementary

The Complementary color scheme is a pair of colors which are on the opposite of each other on the color wheel.



28.3214, 27.9417, 20.4236



24.1506, 26.4488, 40.3917

Split Complementary

Split-complementary colors differ from the complementary color scheme. The scheme consists of three colors, the original color and two neighbors of the complement color.



27.0482, 27.9417, 44.4615



28.3214, 27.9417, 20.4236



23.2303, 27.9417, 38.3947

Square

The Square scheme is like the rectangle color scheme, but the four colors are evenly spaced on the color wheel.



28.3214, 27.9417, 20.4236



22.7873, 27.9417, 25.7435



24.8689, 27.9417, 43.2488



30.7228, 27.9417, 35.6394

Rectangle

The Rectangle color scheme consists of four colors that form a rectangle on the color wheel.



28.3214, 27.9417, 20.4236



24.6765, 27.9417, 20.6306



24.8689, 27.9417, 43.2488



28.5323, 27.9417, 42.9094

Sweetspot

The Sweet Spot groups the original color and five complimentary colors.



28.3221, 27.9430, 20.4242



60.7281, 62.9183, 61.9129



27.2199, 22.7218, 29.3570



13.4253, 13.8729, 13.4238



80.6108, 84.8088, 92.3568



14.7206, 15.4872, 16.8656

Same Dimension

The Same Dimension uses a secret algorithm to generate beautiful new colors.



28.3221, 27.9430, 20.4242



47.9153, 46.2887, 29.9082



32.4451, 36.1889, 21.7985



7.7993, 8.0787, 7.9375



14.1846, 10.2665, 1.2340



0.3966, 0.3527, 0.0472

Inverse Universe

The Inverse Universe completely reimagines the original color for something new.



24.1506, 26.4488, 40.3917



39.1732, 43.1534, 71.7401



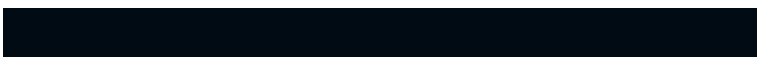
20.7212, 19.5902, 39.2486



7.4603, 7.9575, 9.5611



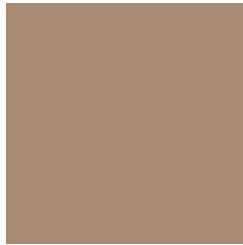
8.2940, 8.0481, 29.0918



0.2518, 0.2959, 0.7245

Previews

White Background



This preview shows how the XYZ color 28.3214, 27.9417, 20.4236 looks on a white background.

Color Contrast Check

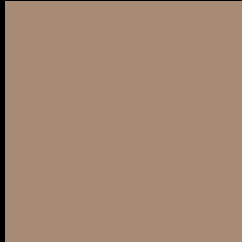
Large Text (above 18pt) WCAG AA ✓ Pass

Any Text WCAG AA × Fail

Large Text (above 18pt) WCAG AAA × Fail

Any Text WCAG AAA × Fail

Black Background



This preview shows how the XYZ color 28.3214, 27.9417, 20.4236 looks on a black background.

Color Contrast Check

Large Text (above 18pt) WCAG AA ✓ Pass

Any Text WCAG AA ✓ Pass

Large Text (above 18pt) WCAG AAA ✓ Pass

Any Text WCAG AAA × Fail

If you want to check with other color combinations, try the [Color Contrast Checker](#).

XYZ 28.3214, 27.9417, 20.4236

Background



This preview shows how black text looks on a background with the XYZ color 28.3214, 27.9417, 20.4236.



This preview shows how white text looks on a background with the XYZ color 28.3214, 27.9417,

Color Blindness Simulation

Color vision deficiency is a very complex topic, and I could not describe the different causes any better than Wikipedia does, so if you want to learn more, you should check out their [article about color blindness](#).

Dichromacy



Original Color

28.3214, 27.9417, 20.4236

Protanopia

26.3801, 28.0268, 21.1589

Deuteranopia

28.5335, 28.0510, 20.4335



Tritanopia

30.3524, 27.9183, 30.5771

Trichromacy



Original Color

28.3214, 27.9417, 20.4236

Protanomaly

26.9844, 27.8995, 20.7925

Deuteranomaly

28.5335, 28.0510, 20.4335

Tritanomaly

29.4694, 27.7646, 26.3601

Monochromacy



Original Color

28.3214, 27.9417, 20.4236

Achromatopsia

26.9133, 28.3149, 30.8349

Achromatomaly

27.2624, 28.1385, 26.5486

CSS Examples

Text

The CSS property to change the color of the text to XYZ 28.3214, 27.9417, 20.4236 is called "color". The color property can be set on classes, ids or directly on the HTML element.

This example shows how text in the color `rgb(167, 139, 116)` looks like.

```
.text, #text, p{  
    color:rgb(167, 139, 116)  
}
```

If you want to add a text shadow in that color use the text-shadow property, you can generate a text shadow directly with our [CSS Text Shadow Generator](#).

Here you see how black text with a 4 pixel rgb(167, 139, 116) colored shadow looks like.

```
.shadow{ text-shadow: 4px 4px 2px rgb(167, 139, 116) }
```

Border

The CSS property to change the border of an element to XYZ 28.3214, 27.9417, 20.4236 is called "border". The border property can be set on classes, ids or directly on the HTML element.

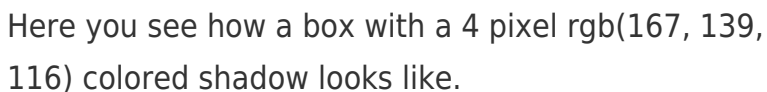
This example shows the color as border, it can be applied via the CSS property "border" or "border-color".

```
.border, #border, table{ border:4px solid rgb(167, 139, 116) }
```


If only the border color should be changed use the property `border-color`.

```
.border{ border-color:rgb(167, 139, 116) }
```

If you want to add a box shadow in that color use:



Here you see how a box with a 4 pixel `rgb(167, 139, 116)` colored shadow looks like.

```
.boxshadow{ -moz-box-shadow:4px 4px 4px 4px rgb(167, 139, 116); -webkit-box-shadow:4px 4px 4px 4px rgb(167, 139, 116); box-shadow:4px 4px 4px 4px rgb(167, 139, 116) }
```

Background

The CSS property to change the background color of an element to XYZ 28.3214, 27.9417, 20.4236 is called "background". The background property can be set on classes, ids or directly on the HTML element.

```
.background, #background, body{  
background: rgb(167, 139, 116) }
```

If only the background color should be changed can be used:

```
.background{ background-color: rgb(167,  
139, 116) }
```

This example shows the color as background, it is applied via the CSS property "background".

To optimize and compress your CSS code, you can use our [online CSS compressor and optimizer](#) based on csstidy. If you want to create a linear or radial gradient as background or border, check our [CSS Gradient Generator](#).

Hey! You found this booklet interesting? Support Converting Colors with the new Membership Option!

The pro membership hides all ads, plus gives you double the colors in the color bucket, and more awesome pro features!

[Learn more, Memberships starting at \\$2.50/m!](#)

**Follow me
on Twitter!**

@ConvertingColor