

Converting Colors

XYZ(28.3288, 27.4605, 13.4802)

Have a look what the booklet for
XYZ(28.3288, 27.4605, 13.4802)
contains.

XYZ(28.3288, 27.4605, 13.4802)	3
<i>Conversions</i>	4
<i>Details</i>	6
<i>Harmonies</i>	12
<i>Previews</i>	24
<i>Color Blindness Simulation</i>	28
<i>CSS Examples</i>	31

Color

**XYZ(28.3288, 27.4605,
13.4802)**

Conversions

Conversions Part 1

Format	Color
Hex	AF885A
RGB	175, 136, 90
RGB Percent	69%, 53%, 35%
CMY	0.3137, 0.4666, 0.6471
CMYK	0.00, 0.22, 0.49, 0.31
HSL	32°, 35%, 52%
HSV	32°, 49%, 69%
XYZ	28.3288, 27.4605, 13.4802
YIQ	142.4170, 38.0100, -6.0380

Conversions

Conversions Part 2

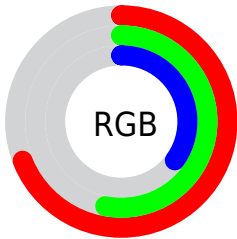
Format	Color
R_{YB}	162, 175, 90
Decimal	11503706
CIE _{Lab}	59.40, 9.00, 30.32
CIE _{LCh}	59, 31.624, 73.470
Yxy	27.4605, 0.4090, 0.3964
Android (android.graphics.Color)	4289693786 (0xFFAF885A)
YUV	142.4170, -25.8416, 28.5753
Hunter-Lab	52.4028, 4.7918, 21.4301

Details

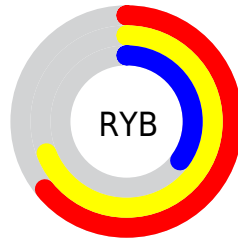
The XYZ color **28.3288, 27.4605, 13.4802** is a dark color, and the websafe version is hex **CC9966**. A complement of this color would be **19.8042, 20.9684, 43.5607**, and the grayscale version is **25.9658, 27.3181, 29.7494**.

A 20% lighter version of the original color is **56.2840, 55.4741, 32.9404**, and **11.5096, 10.8231, 3.7679** is the 20% darker color. If you saturate the color by 10%, you get **26.5813, 25.0206, 9.6455**, and if you desaturate by 10%, it is **30.3377, 30.1427, 18.2678**.

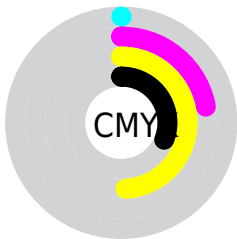
Distribution



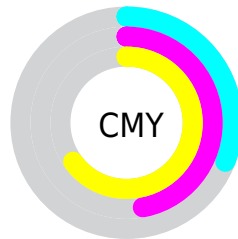
- Red (69%)
- Green (53%)
- Blue (35%)



- Red (64%)
- Yellow (69%)
- Blue (35%)



- Cyan (0%)
- Magenta (22%)
- Yellow (49%)
- Black (31%)



- Cyan (31%)
- Magenta (47%)
- Yellow (65%)

Brightness & Saturation Gradients

These gradients show how the XYZ color 28.3288, 27.4605, 13.4802 changes by changing the brightness by 10 percent. The first figure shows a shift by +10% for each color and the second figure -10%.

Similar to the brightness gradients but the following saturation gradients show a change of the XYZ color 28.3288, 27.4605, 13.4802 by changing the saturation by 10% instead.

■ 28.3288, 27.4605,
13.4802

■ 28.3288, 27.4605,
13.4802

286.0864,
289.8799, 225.2875

■ 18.7154, 17.9194,
7.6254

■ 56.4139, 55.6219,
32.8676

■ 11.5676, 10.8921,
3.7719

■ 75.6164, 75.0110,
47.2373

■ 6.5201, 5.9943,
1.5011

■ 98.7458, 98.4516,
65.2823

■ 3.2074, 2.8416,
0.2187

■ 126.1677,
126.3280, 87.4214

■ 1.2644, 1.0496,
0.0000

158.2474,
159.0246, 114.0729

■ 0.1563, 0.0000,
0.0000

195.3501,

■ 0.0000, 0.0000,

196.9259, 145.6554

0.0000

237.8413,
240.4162, 182.5874

■ 28.3288, 27.4605,
13.4802

■ 28.3288, 27.4605,
13.4802

■ 26.5813, 25.0206,
9.6455

■ 30.3377, 30.1427,
18.2678

■ 25.0789, 22.8102,
6.6956

■ 32.6191, 33.0712,
24.0667

■ 23.8062, 20.8212,
4.5560

■ 35.1858, 36.2549,
30.9324

■ 22.7447, 19.0431,
3.1388

■ 38.0490, 39.7012,
38.9160

■ 21.8631, 17.4601,
2.2897

■ 41.2192, 43.4167,
48.0652

■ 21.7457, 17.2470,
2.1829

■ 44.7066, 47.4082,
58.4249

■ 48.5206, 51.6818,
70.0377

■ 52.6704, 56.2436,
82.9439

■ 57.1647, 61.0995,
97.1822

Harmonies

Analogous

The Analogous color harmony consists of three colors that are next to each other on the color wheel.



32.0296, 27.4605, 17.2600



28.3288, 27.4605, 13.4802



24.3656, 27.4605, 13.3036

Triad

The Triadic color harmony groups three colors that are evenly spaced from another and form a triangle on the color wheel.



28.3288, 27.4605, 13.4802



19.3698, 27.4605, 35.2759



31.7009, 27.4605, 48.6964

Complementary

The Complementary color scheme is a pair of colors which are on the opposite of each other on the color wheel.



28.3288, 27.4605, 13.4802



19.8042, 20.9684, 43.5607

Split Complementary

Split-complementary colors differ from the complementary color scheme. The scheme consists of three colors, the original color and two neighbors of the complement color.



27.9156, 27.4605, 56.5365



28.3288, 27.4605, 13.4802



20.9521, 27.4605, 47.5644

Square

The Square scheme is like the rectangle color scheme, but the four colors are evenly spaced on the color wheel.



28.3288, 27.4605, 13.4802



19.4563, 27.4605, 24.1111



23.9920, 27.4605, 56.0765



34.1072, 27.4605, 36.5480

Rectangle

The Rectangle color scheme consists of four colors that form a rectangle on the color wheel.



28.3288, 27.4605, 13.4802



22.1199, 27.4605, 15.1413



23.9920, 27.4605, 56.0765



30.5318, 27.4605, 52.0459

Sweetspot

The Sweet Spot groups the original color and five complimentary colors.



28.3295, 27.4618, 13.4807



64.6550, 66.9227, 59.9077



25.3424, 18.0293, 23.1465



14.1416, 14.5968, 12.6842



84.5950, 89.0005, 96.9216



16.2198, 17.0645, 18.5832

Same Dimension

The Same Dimension uses a secret algorithm to generate beautiful new colors.



28.3295, 27.4618, 13.4807



47.4814, 44.6318, 17.0149



34.2252, 40.1875, 15.6263



8.3508, 8.7064, 8.4537



15.6350, 12.4755, 1.5839



0.4888, 0.4548, 0.0620

Inverse Universe

The Inverse Universe completely reimagines the original color for something new.



19.8042, 20.9684, 43.5607



30.4502, 31.6722, 77.1453



15.8916, 12.7263, 42.1760



7.8703, 8.3399, 10.1477



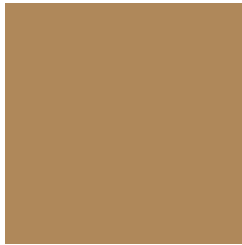
7.6708, 6.4755, 29.8901



0.2685, 0.2903, 0.8499

Previews

White Background



This preview shows how the XYZ color 28.3288, 27.4605, 13.4802 looks on a white background.

Color Contrast Check

Large Text (above 18pt) WCAG AA ✓ Pass

Any Text WCAG AA × Fail

Large Text (above 18pt) WCAG AAA × Fail

Any Text WCAG AAA × Fail

Black Background



This preview shows how the XYZ color 28.3288, 27.4605, 13.4802 looks on a black background.

Color Contrast Check

Large Text (above 18pt) WCAG AA ✓ Pass

Any Text WCAG AA ✓ Pass

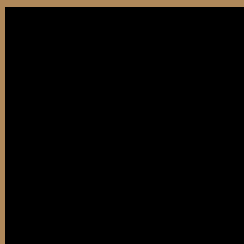
Large Text (above 18pt) WCAG AAA ✓ Pass

Any Text WCAG AAA × Fail

If you want to check with other color combinations, try the [Color Contrast Checker](#).

XYZ 28.3288, 27.4605, 13.4802

Background



This preview shows how black text looks on a background with the XYZ color 28.3288, 27.4605, 13.4802.



This preview shows how white text looks on a background with the XYZ color 28.3288, 27.4605,

Color Blindness Simulation

Color vision deficiency is a very complex topic, and I could not describe the different causes any better than Wikipedia does, so if you want to learn more, you should check out their [article about color blindness](#).

Dichromacy



Original Color

28.3288, 27.4605, 13.4802

Protanopia

25.5085, 27.5032, 14.3201

Deuteranopia

28.0247, 27.5137, 13.5065



Tritanopia

31.3067, 27.4424, 28.4578

Trichromacy



Original Color

28.3288, 27.4605, 13.4802

Protanomaly

26.4141, 27.3154, 14.0054

Deuteranomaly

28.2467, 27.6282, 13.5169

Tritanomaly

30.1242, 27.3726, 22.1081

Monochromacy



Original Color

28.3288, 27.4605, 13.4802

Achromatopsia

25.7108, 27.0498, 29.4572

Achromatomaly

26.2797, 27.0563, 22.5762

CSS Examples

Text

The CSS property to change the color of the text to XYZ 28.3288, 27.4605, 13.4802 is called "color". The color property can be set on classes, ids or directly on the HTML element.

This example shows how text in the color `rgb(175, 136, 90)` looks like.

```
.text, #text, p{  
    color:rgb(175, 136, 90)  
}
```

If you want to add a text shadow in that color use the text-shadow property, you can generate a text shadow directly with our [CSS Text Shadow Generator](#).

Here you see how black text with a 4 pixel rgb(175, 136, 90) colored shadow looks like.

```
.shadow{ text-shadow: 4px 4px 2px rgb(175, 136, 90) }
```

Border

The CSS property to change the border of an element to XYZ 28.3288, 27.4605, 13.4802 is called "border". The border property can be set on classes, ids or directly on the HTML element.

This example shows the color as border, it can be applied via the CSS property "border" or "border-color".

```
.border, #border, table{ border:4px solid rgb(175, 136, 90) }
```


If only the border color should be changed use the property `border-color`.

```
.border{ border-color:rgb(175, 136, 90) }
```

If you want to add a box shadow in that color use:

Here you see how a box with a 4 pixel `rgb(175, 136, 90)` colored shadow looks like.

```
.boxshadow{ -moz-box-shadow:4px 4px 4px  
4px rgb(175, 136, 90); -webkit-box-  
shadow:4px 4px 4px 4px rgb(175, 136, 90);  
box-shadow:4px 4px 4px 4px rgb(175, 136,  
90) }
```

Background

The CSS property to change the background color of an element to XYZ 28.3288, 27.4605, 13.4802 is called "background". The background property can be set on classes, ids or directly on the HTML element.

```
.background, #background, body{  
background: rgb(175, 136, 90) }
```

If only the background color should be changed can be used:

```
.background{ background-color: rgb(175,  
136, 90) }
```

This example shows the color as background, it is applied via the CSS property "background".

To optimize and compress your CSS code, you can use our [online CSS compressor and optimizer](#) based on csstidy. If you want to create a linear or radial gradient as background or border, check our [CSS Gradient Generator](#).

Hey! You found this booklet interesting? Support Converting Colors with the new Membership Option!

The pro membership hides all ads, plus gives you double the colors in the color bucket, and more awesome pro features!

[Learn more, Memberships starting at \\$2.50/m!](#)

**Follow me
on Twitter!**

@ConvertingColor