

Converting Colors

XYZ(28.3421, 26.1772, 14.6997)

Have a look what the booklet for
XYZ(28.3421, 26.1772, 14.6997)
contains.

XYZ(28.4540, 26.2748, 14.6382)	3
<i>Conversions</i>	4
<i>Details</i>	6
<i>Harmonies</i>	12
<i>Previews</i>	24
<i>Color Blindness Simulation</i>	28
<i>CSS Examples</i>	31

Color

**XYZ(28.4540, 26.2748,
14.6382)**

Conversions

Conversions Part 1

Format	Color
Hex	B28260
RGB	178, 130, 96
RGB Percent	70%, 51%, 38%
CMY	0.3020, 0.4902, 0.6235
CMYK	0.00, 0.27, 0.46, 0.30
HSL	25°, 35%, 54%
HSV	25°, 46%, 70%
XYZ	28.4540, 26.2748, 14.6382
YIQ	140.4760, 39.5220, -0.3980

Conversions

Conversions Part 2

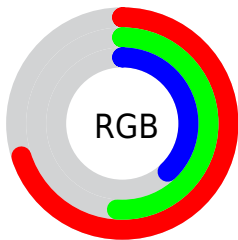
Format	Color
RYB	178, 154, 96
Decimal	11698784
CIELab	58.30, 14.24, 25.64
CIELCh	58, 29.328, 60.962
Yxy	26.2748, 0.4102, 0.3788
Android (android.graphics.Color)	4289888864 (0xFFB28260)
YUV	140.4760, -21.9267, 32.9085
Hunter-Lab	51.2590, 9.3827, 18.9496

Details

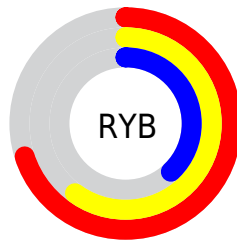
The XYZ color **28.4540, 26.2748, 14.6382** is a dark color, and the websafe version is hex **CC9966**. A complement of this color would be **22.8324, 25.6464, 45.8660**, and the grayscale version is **25.1852, 26.4968, 28.8550**.

A 20% lighter version of the original color is **56.4609, 53.6357, 34.9807**, and **11.6652, 10.3176, 4.2824** is the 20% darker color. If you saturate the color by 10%, you get **26.4092, 23.3516, 10.3610**, and if you desaturate by 10%, it is **30.8260, 29.5555, 19.9404**.

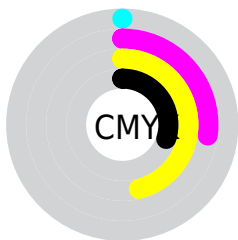
Distribution



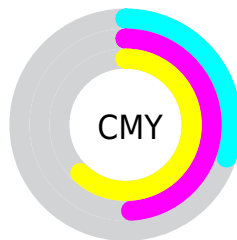
- Red (70%)
- Green (51%)
- Blue (38%)



- Red (70%)
- Yellow (60%)
- Blue (38%)



- Cyan (0%)
- Magenta (27%)
- Yellow (46%)
- Black (30%)



- Cyan (30%)
- Magenta (49%)
- Yellow (62%)

Brightness & Saturation Gradients

These gradients show how the XYZ color 28.4540, 26.2748, 14.6382 changes by changing the brightness by 10 percent. The first figure shows a shift by +10% for each color and the second figure -10%.

Similar to the brightness gradients but the following saturation gradients show a change of the XYZ color 28.4540, 26.2748, 14.6382 by changing the saturation by 10% instead.

■ 28.4540, 26.2748,
14.6382

■ 28.4540, 26.2748,
14.6382

286.6709,
284.1285, 232.7306

■ 18.8104, 17.0293,
8.4221

■ 56.6121, 53.7179,
34.9505

■ 11.6365, 10.2554,
4.2746

■ 75.8572, 72.6844,
49.8837

■ 6.5671, 5.5686,
1.7771

■ 99.0335, 95.6600,
68.5598

■ 3.2368, 2.5846,
0.4128

■ 126.5064,
123.0291, 91.3971

■ 1.2802, 0.9189,
0.0000

158.6413,
155.1761, 118.8143

■ 0.1683, 0.0000,
0.0000

195.8034,

■ 0.0000, 0.0000,

192.4854, 151.2300

0.0000

238.3581,
235.3414, 189.0625

■ 28.4540, 26.2748,
14.6382

■ 28.4540, 26.2748,
14.6382

■ 26.4092, 23.3516,
10.3610

■ 30.8260, 29.5555,
19.9404

■ 24.6728, 20.7686,
7.0392

■ 33.5388, 33.2024,
26.3280

■ 23.2269, 18.5127,
4.5965

■ 36.6073, 37.2286,
33.8584

■ 22.0503, 16.5682,
2.9443

■ 40.0451, 41.6454,
42.5845

■ 21.1165, 14.9166,
1.9673

■ 43.8650, 46.4636,
52.5560

■ 20.7964, 14.3377,
1.6714

■ 48.0789, 51.6935,
63.8195

■ 52.6985, 57.3451,
76.4194

■ 57.7347, 63.4279,
90.3979

■ 63.0043, 69.8735,
104.7740

Harmonies

Analogous

The Analogous color harmony consists of three colors that are next to each other on the color wheel.



31.3311, 26.2748, 19.6434



28.4540, 26.2748, 14.6382



24.8584, 26.2748, 13.1159

Triad

The Triadic color harmony groups three colors that are evenly spaced from another and form a triangle on the color wheel.



28.4540, 26.2748, 14.6382



18.7221, 26.2748, 28.9401



28.6723, 26.2748, 48.9836

Complementary

The Complementary color scheme is a pair of colors which are on the opposite of each other on the color wheel.



28.4540, 26.2748, 14.6382



22.8324, 25.6464, 45.8660

Split Complementary

Split-complementary colors differ from the complementary color scheme. The scheme consists of three colors, the original color and two neighbors of the complement color.



25.0888, 26.2748, 53.0970



28.4540, 26.2748, 14.6382



19.5398, 26.2748, 39.9558

Square

The Square scheme is like the rectangle color scheme, but the four colors are evenly spaced on the color wheel.



28.4540, 26.2748, 14.6382



19.4421, 26.2748, 20.0916



21.7889, 26.2748, 49.4574



31.4654, 26.2748, 39.2459

Rectangle

The Rectangle color scheme consists of four colors that form a rectangle on the color wheel.



28.4540, 26.2748, 14.6382



22.5983, 26.2748, 13.9027



21.7889, 26.2748, 49.4574



27.5093, 26.2748, 51.1611

Sweetspot

The Sweet Spot groups the original color and five complimentary colors.



28.4547, 26.2761, 14.6387



67.4723, 68.9200, 64.1229



27.6692, 19.8814, 29.2482



14.6668, 14.9041, 13.5010



86.6293, 91.1408, 99.2523



17.0014, 17.8868, 19.4787

Same Dimension

The Same Dimension uses a secret algorithm to generate beautiful new colors.



28.4547, 26.2761, 14.6387



47.9311, 42.4042, 18.8681



34.8085, 38.9838, 16.7567



8.7762, 9.0649, 8.9397



14.9393, 10.3771, 1.2156



0.5282, 0.4428, 0.0576

Inverse Universe

The Inverse Universe completely reimagines the original color for something new.



22.8324, 25.6464, 45.8660



36.4757, 41.0875, 82.3894



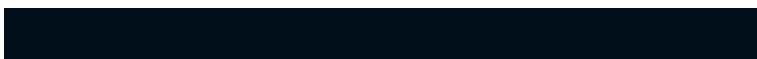
17.8304, 15.6424, 44.1987



8.4414, 9.0289, 10.8042



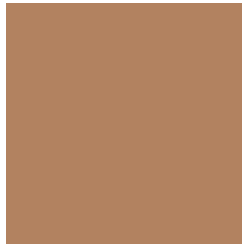
9.3683, 9.5370, 31.4840



0.3507, 0.4119, 1.0093

Previews

White Background



This preview shows how the XYZ color 28.4540, 26.2748, 14.6382 looks on a white background.

Color Contrast Check

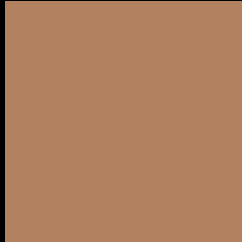
Large Text (above 18pt) WCAG AA ✓ Pass

Any Text WCAG AA × Fail

Large Text (above 18pt) WCAG AAA × Fail

Any Text WCAG AAA × Fail

Black Background



This preview shows how the XYZ color 28.4540, 26.2748, 14.6382 looks on a black background.

Color Contrast Check

Large Text (above 18pt) WCAG AA ✓ Pass

Any Text WCAG AA ✓ Pass

Large Text (above 18pt) WCAG AAA ✓ Pass

Any Text WCAG AAA × Fail

If you want to check with other color combinations, try the [Color Contrast Checker](#).

XYZ 28.4540, 26.2748, 14.6382

Background



This preview shows how black text looks on a background with the XYZ color 28.4540, 26.2748, 14.6382.



This preview shows how white text looks on a background with the XYZ color 28.4540, 26.2748,

Color Blindness Simulation

Color vision deficiency is a very complex topic, and I could not describe the different causes any better than Wikipedia does, so if you want to learn more, you should check out their [article about color blindness](#).

Dichromacy



Original Color

28.4540, 26.2748, 14.6382

Protanopia

24.4408, 26.2556, 15.8363

Deuteranopia

26.7391, 26.2012, 14.4745



Tritanopia

30.6927, 26.2122, 25.9960

Trichromacy



Original Color

28.4540, 26.2748, 14.6382

Protanomaly

25.7542, 26.0862, 15.4821

Deuteranomaly

27.4663, 26.3719, 14.4691

Tritanomaly

29.8019, 26.2381, 21.2630

Monochromacy



Original Color

28.4540, 26.2748, 14.6382

Achromatopsia

24.9269, 26.2251, 28.5591

Achromatomaly

25.7687, 25.9336, 22.7163

CSS Examples

Text

The CSS property to change the color of the text to XYZ 28.4540, 26.2748, 14.6382 is called "color". The color property can be set on classes, ids or directly on the HTML element.

This example shows how text in the color `rgb(178, 130, 96)` looks like.

```
.text, #text, p{  
    color:rgb(178, 130, 96)  
}
```

If you want to add a text shadow in that color use the text-shadow property, you can generate a text shadow directly with our [CSS Text Shadow Generator](#).

Here you see how black text with a 4 pixel rgb(178, 130, 96) colored shadow looks like.

```
.shadow{ text-shadow: 4px 4px 2px rgb(178, 130, 96) }
```

Border

The CSS property to change the border of an element to XYZ 28.4540, 26.2748, 14.6382 is called "border". The border property can be set on classes, ids or directly on the HTML element.

This example shows the color as border, it can be applied via the CSS property "border" or "border-color".

```
.border, #border, table{ border:4px solid rgb(178, 130, 96) }
```


If only the border color should be changed use the property `border-color`.

```
.border{ border-color:rgb(178, 130, 96) }
```

If you want to add a box shadow in that color use:

Here you see how a box with a 4 pixel `rgb(178, 130, 96)` colored shadow looks like.

```
.boxshadow{ -moz-box-shadow:4px 4px 4px  
4px rgb(178, 130, 96); -webkit-box-  
shadow:4px 4px 4px 4px rgb(178, 130, 96);  
box-shadow:4px 4px 4px 4px rgb(178, 130,  
96) }
```

Background

The CSS property to change the background color of an element to XYZ 28.4540, 26.2748, 14.6382 is called "background". The background property can be set on classes, ids or directly on the HTML element.

```
.background, #background, body{  
background: rgb(178, 130, 96) }
```

If only the background color should be changed can be used:

```
.background{ background-color: rgb(178,  
130, 96) }
```

This example shows the color as background, it is applied via the CSS property "background".

To optimize and compress your CSS code, you can use our [online CSS compressor and optimizer](#) based on csstidy. If you want to create a linear or radial gradient as background or border, check our [CSS Gradient Generator](#).

Hey! You found this booklet interesting? Support Converting Colors with the new Membership Option!

The pro membership hides all ads, plus gives you double the colors in the color bucket, and more awesome pro features!

[Learn more, Memberships starting at \\$2.50/m!](#)

**Follow me
on Twitter!**

@ConvertingColor