

Converting Colors

XYZ(28.3617, 27.9064, 11.4736)

Have a look what the booklet for
XYZ(28.3617, 27.9064, 11.4736)
contains.

XYZ(28.4409, 27.9863, 11.4923)	3
<i>Conversions</i>	4
<i>Details</i>	6
<i>Harmonies</i>	12
<i>Previews</i>	24
<i>Color Blindness Simulation</i>	28
<i>CSS Examples</i>	31

Color

**XYZ(28.4409, 27.9863,
11.4923)**

Conversions

Conversions Part 1

Format	Color
Hex	B08A50
RGB	176, 138, 80
RGB Percent	69%, 54%, 31%
CMY	0.3098, 0.4588, 0.6863
CMYK	0.00, 0.22, 0.55, 0.31
HSL	36°, 38%, 50%
HSV	36°, 55%, 69%
XYZ	28.4409, 27.9863, 11.4923
YIQ	142.7500, 41.2660, -9.9820

Conversions

Conversions Part 2

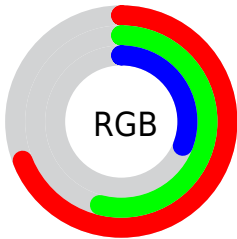
Format	Color
R_{YB}	143, 176, 80
Decimal	11569744
CIE _{Lab}	59.88, 7.38, 36.30
CIE _{LCh}	60, 37.046, 78.514
Yxy	27.9863, 0.4187, 0.4121
Android (android.graphics.Color)	4289759824 (0xFFB08A50)
YUV	142.7500, -30.9357, 29.1603
Hunter-Lab	52.9021, 3.3855, 24.1515

Details

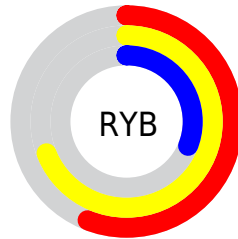
The XYZ color **28.4409, 27.9863, 11.4923** is a dark color, and the websafe version is hex **CC9966**. A complement of this color would be **17.6228, 17.7960, 43.5801**, and the grayscale version is **26.1172, 27.4774, 29.9229**.

A 20% lighter version of the original color is **56.6592, 56.3927, 29.3714**, and **11.6356, 11.1487, 2.9051** is the 20% darker color. If you saturate the color by 10%, you get **26.9065, 25.8254, 8.1821**, and if you desaturate by 10%, it is **30.2111, 30.3462, 15.7220**.

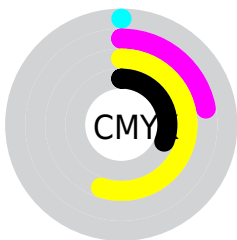
Distribution



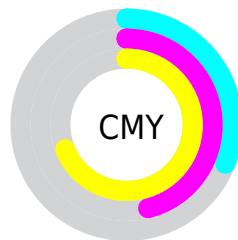
- Red (69%)
- Green (54%)
- Blue (31%)



- Red (56%)
- Yellow (69%)
- Blue (31%)



- Cyan (0%)
- Magenta (22%)
- Yellow (55%)
- Black (31%)



- Cyan (31%)
- Magenta (46%)
- Yellow (69%)

Brightness & Saturation Gradients

These gradients show how the XYZ color 28.4409, 27.9863, 11.4923 changes by changing the brightness by 10 percent. The first figure shows a shift by +10% for each color and the second figure -10%.

Similar to the brightness gradients but the following saturation gradients show a change of the XYZ color 28.4409, 27.9863, 11.4923 by changing the saturation by 10% instead.

■ 28.4409, 27.9863,
11.4923

■ 28.4409, 27.9863,
11.4923

286.6098,
292.4014, 211.8718

■ 18.8004, 18.3153,
6.2807

■ 56.5913, 56.4626,
29.2174

■ 11.6293, 11.1766,
2.9450

■ 75.8320, 76.0367,
42.5680

■ 6.5622, 6.1858,
1.0666

■ 99.0034, 99.6806,
59.4687

■ 3.2337, 2.9584,
0.0000

■ 126.4710,
127.7787, 80.3379

■ 1.2785, 1.1100,
0.0000

■ 158.6001,
160.7155, 105.5943

■ 0.1671, 0.0000,
0.0000

195.7560,

■ 0.0000, 0.0000,

198.8753, 135.6564

0.0000

238.3041,
242.6425, 170.9427

■ 28.4409, 27.9863,
11.4923

■ 28.4409, 27.9863,
11.4923

■ 26.9065, 25.8254,
8.1821

■ 30.2111, 30.3462,
15.7220

■ 25.5911, 23.8517,
5.7177

■ 32.2284, 32.9084,
20.9338

■ 24.4784, 22.0578,
4.0166

■ 34.5056, 35.6807,
27.1869

■ 23.5482, 20.4336,
2.9787

■ 37.0540, 38.6695,
34.5349

■ 23.0937, 19.6087,
2.5677

■ 39.8841, 41.8807,
43.0281

■ 43.0057, 45.3199,
52.7134

■ 46.4284, 48.9926,
63.6351

■ 50.1610, 52.9039,
75.8354

■ 54.2120, 57.0587,
89.3543

Harmonies

Analogous

The Analogous color harmony consists of three colors that are next to each other on the color wheel.



33.0484, 27.9863, 14.9026



28.4409, 27.9863, 11.4923



23.8318, 27.9863, 11.9264

Triad

The Triadic color harmony groups three colors that are evenly spaced from another and form a triangle on the color wheel.



28.4409, 27.9863, 11.4923



18.9166, 27.9863, 39.4540



33.9623, 27.9863, 51.0388

Complementary

The Complementary color scheme is a pair of colors which are on the opposite of each other on the color wheel.



28.4409, 27.9863, 11.4923



17.6228, 17.7960, 43.5801

Split Complementary

Split-complementary colors differ from the complementary color scheme. The scheme consists of three colors, the original color and two neighbors of the complement color.



29.5749, 27.9863, 62.2012



28.4409, 27.9863, 11.4923



21.0504, 27.9863, 54.2698

Square

The Square scheme is like the rectangle color scheme, but the four colors are evenly spaced on the color wheel.



28.4409, 27.9863, 11.4923



18.6890, 27.9863, 25.6028



24.8406, 27.9863, 63.5324



36.4779, 27.9863, 35.9231

Rectangle

The Rectangle color scheme consists of four colors that form a rectangle on the color wheel.



28.4409, 27.9863, 11.4923



21.3591, 27.9863, 14.3734



24.8406, 27.9863, 63.5324



32.6352, 27.9863, 55.5473

Sweetspot

The Sweet Spot groups the original color and five complimentary colors.



28.4416, 27.9876, 11.4929



66.3660, 69.1648, 60.1758



24.0670, 16.2851, 19.1395



14.1774, 14.7503, 12.4436



84.5950, 89.0005, 96.9216



16.2198, 17.0645, 18.5832

Same Dimension

The Same Dimension uses a secret algorithm to generate beautiful new colors.



28.4416, 27.9876, 11.4929



48.3938, 46.2463, 14.0283



32.7830, 39.7798, 13.5402



8.9092, 9.3308, 8.9840



17.0027, 14.5040, 1.9034



0.5900, 0.5664, 0.0782

Inverse Universe

The Inverse Universe completely reimagines the original color for something new.



17.6228, 17.7960, 43.5801



26.8343, 25.9762, 78.0949



14.8830, 11.0258, 42.4177



8.3087, 8.7637, 10.7600



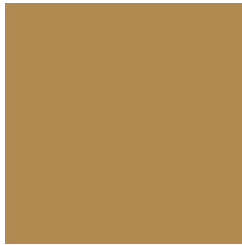
7.3948, 5.5901, 30.8262



0.2905, 0.2915, 0.9892

Previews

White Background



This preview shows how the XYZ color 28.4409, 27.9863, 11.4923 looks on a white background.

Color Contrast Check

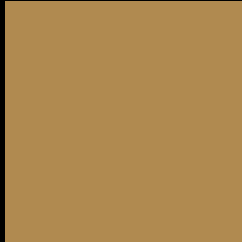
Large Text (above 18pt) WCAG AA ✓ Pass

Any Text WCAG AA × Fail

Large Text (above 18pt) WCAG AAA × Fail

Any Text WCAG AAA × Fail

Black Background



This preview shows how the XYZ color 28.4409, 27.9863, 11.4923 looks on a black background.

Color Contrast Check

Large Text (above 18pt) WCAG AA ✓ Pass

Any Text WCAG AA ✓ Pass

Large Text (above 18pt) WCAG AAA ✓ Pass

Any Text WCAG AAA × Fail

If you want to check with other color combinations, try the [Color Contrast Checker](#).

XYZ 28.4409, 27.9863, 11.4923

Background



This preview shows how black text looks on a background with the XYZ color 28.4409, 27.9863, 11.4923.



This preview shows how white text looks on a background with the XYZ color 28.4409, 27.9863,

Color Blindness Simulation

Color vision deficiency is a very complex topic, and I could not describe the different causes any better than Wikipedia does, so if you want to learn more, you should check out their [article about color blindness](#).

Dichromacy



Original Color

28.4409, 27.9863, 11.4923

Protanopia

25.9465, 28.2309, 12.0642

Deuteranopia

28.6679, 28.1033, 11.5029



Tritanopia

31.9801, 27.9794, 28.9143

Trichromacy



Original Color

28.4409, 27.9863, 11.4923

Protanomaly

26.6753, 27.9394, 11.7715

Deuteranomaly

28.6679, 28.1033, 11.5029

Tritanomaly

30.4453, 27.9658, 21.2461

Monochromacy



Original Color

28.4409, 27.9863, 11.4923

Achromatopsia

26.1081, 27.4677, 29.9124

Achromatomaly

26.4326, 27.3744, 21.6599

CSS Examples

Text

The CSS property to change the color of the text to XYZ 28.4409, 27.9863, 11.4923 is called "color". The color property can be set on classes, ids or directly on the HTML element.

This example shows how text in the color `rgb(176, 138, 80)` looks like.

```
.text, #text, p{  
    color:rgb(176, 138, 80)  
}
```

If you want to add a text shadow in that color use the text-shadow property, you can generate a text shadow directly with our [CSS Text Shadow Generator](#).

Here you see how black text with a 4 pixel rgb(176, 138, 80) colored shadow looks like.

```
.shadow{ text-shadow: 4px 4px 2px rgb(176, 138, 80) }
```

Border

The CSS property to change the border of an element to XYZ 28.4409, 27.9863, 11.4923 is called "border". The border property can be set on classes, ids or directly on the HTML element.

This example shows the color as border, it can be applied via the CSS property "border" or "border-color".

```
.border, #border, table{ border:4px solid rgb(176, 138, 80) }
```


If only the border color should be changed use the property border-color.

```
.border{ border-color:rgb(176, 138, 80) }
```

If you want to add a box shadow in that color use:

Here you see how a box with a 4 pixel rgb(176, 138, 80) colored shadow looks like.

```
.boxshadow{ -moz-box-shadow:4px 4px 4px  
4px rgb(176, 138, 80); -webkit-box-  
shadow:4px 4px 4px 4px rgb(176, 138, 80);  
box-shadow:4px 4px 4px 4px rgb(176, 138,  
80) }
```

Background

The CSS property to change the background color of an element to XYZ 28.4409, 27.9863, 11.4923 is called "background". The background property can be set on classes, ids or directly on the HTML element.

```
.background, #background, body{  
background: rgb(176, 138, 80) }
```

If only the background color should be changed can be used:

```
.background{ background-color: rgb(176,  
138, 80) }
```

This example shows the color as background, it is applied via the CSS property "background".

To optimize and compress your CSS code, you can use our [online CSS compressor and optimizer](#) based on csstidy. If you want to create a linear or radial gradient as background or border, check our [CSS Gradient Generator](#).

Hey! You found this booklet interesting? Support Converting Colors with the new Membership Option!

The pro membership hides all ads, plus gives you double the colors in the color bucket, and more awesome pro features!

[Learn more, Memberships starting at \\$2.50/m!](#)

**Follow me
on Twitter!**

@ConvertingColor