

# Converting Colors

XYZ(28.3623, 28.6045, 19.3931)

Have a look what the booklet for  
XYZ(28.3623, 28.6045, 19.3931)  
contains.

<b>XYZ(28.3235, 28.6228, 19.3612)</b> .....	3
<b><i>Conversions</i></b> .....	4
<b><i>Details</i></b> .....	6
<b><i>Harmonies</i></b> .....	12
<b><i>Previews</i></b> .....	24
<b><i>Color Blindness Simulation</i></b> .....	28
<b><i>CSS Examples</i></b> .....	31

# Color

**XYZ(28.3235, 28.6228,  
19.3612)**

# Conversions

## Conversions Part 1

<b>Format</b>	<b>Color</b>
Hex	A68E70
RGB	166, 142, 112
RGB Percent	65%, 56%, 44%
CMY	0.3490, 0.4431, 0.5608
CMYK	0.00, 0.14, 0.33, 0.35
HSL	33°, 23%, 55%
HSV	33°, 33%, 65%
XYZ	28.3235, 28.6228, 19.3612
YIQ	145.7560, 23.9340, -4.2420

# Conversions

## Conversions Part 2

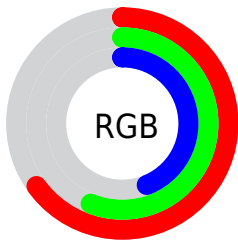
<b>Format</b>	<b>Color</b>
<b>R<sub>YB</sub></b>	155, 166, 112
Decimal	10915440
CIE <sub>Lab</sub>	60.45, 4.45, 19.34
CIE <sub>LCh</sub>	60, 19.846, 77.028
Yxy	28.6228, 0.3712, 0.3751
Android (android.graphics.Color)	4289105520 (0xFFA68E70)
YUV	145.7560, -16.6417, 17.7540
Hunter-Lab	53.5003, 0.8739, 15.9938

# Details

The XYZ color **28.3235, 28.6228, 19.3612** is a dark color, and the websafe version is hex **999966**. A complement of this color would be **22.3690, 23.8056, 39.4924**, and the grayscale version is **27.2814, 28.7021, 31.2566**.

A 20% lighter version of the original color is **56.5650, 57.6898, 43.2759**, and **11.5626, 11.5352, 6.4676** is the 20% darker color. If you saturate the color by 10%, you get **26.4218, 26.1647, 14.5801**, and if you desaturate by 10%, it is **30.4697, 31.2970, 25.0652**.

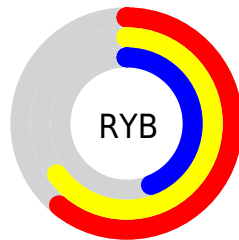
# Distribution



Red (65%)

Green (56%)

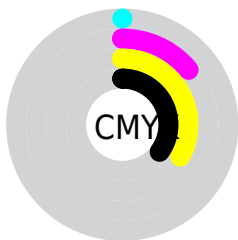
Blue (44%)



Red (61%)

Yellow (65%)

Blue (44%)

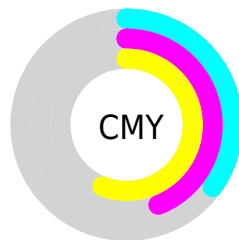


Cyan (0%)

Magenta (14%)

Yellow (33%)

Black (35%)



Cyan (35%)

Magenta (44%)

Yellow (56%)

# Brightness & Saturation Gradients

These gradients show how the XYZ color 28.3235, 28.6228, 19.3612 changes by changing the brightness by 10 percent. The first figure shows a shift by +10% for each color and the second figure -10%.

Similar to the brightness gradients but the following saturation gradients show a change of the XYZ color 28.3235, 28.6228, 19.3612 by changing the saturation by 10% instead.



■ 28.3235, 28.6228,  
19.3612

■ 28.3235, 28.6228,  
19.3612

286.0616,  
295.4310, 260.9244

■ 18.7114, 18.7957,  
11.7521

■ 56.4056, 57.4772,  
43.1884

■ 11.5647, 11.5227,  
6.4546

■ 75.6062, 77.2733,  
60.2435

■ 6.5181, 6.4196,  
3.0502

■ 98.7337, 101.1612,  
81.2844

■ 3.2062, 3.1019,  
1.1203

■ 126.1534,  
129.5253, 106.7296

■ 1.2637, 1.1851,  
0.0000

158.2307,  
162.7499, 136.9977

■ 0.1558, 0.0495,  
0.0000

195.3309,

■ 0.0000, 0.0000,

201.2194, 172.5072

0.0000

237.8195,  
245.3184, 213.6766

■ 28.3235, 28.6228,  
19.3612

■ 28.3235, 28.6228,  
19.3612

■ 26.4218, 26.1647,  
14.5801

■ 30.4697, 31.2970,  
25.0652

■ 24.7518, 23.9122,  
10.6702

■ 32.8683, 34.1895,  
31.7364

■ 23.3023, 21.8597,  
7.5776

■ 35.5294, 37.3076,  
39.4184

■ 22.0604, 19.9995,  
5.2413

■ 38.4618, 40.6568,  
48.1515

■ 21.0116, 18.3234,  
3.5918

■ 41.6740, 44.2424,  
57.9738

■ 20.1385, 16.8220,  
2.5464

■ 45.1740, 48.0697,  
68.9215

■ 19.5733, 15.8017,  
2.0184

■ 48.9695, 52.1437,  
81.0293

■ 53.0679, 56.4691,  
94.3300

■ 56.4281, 60.6314,  
103.3367

# Harmonies

## Analogous

The Analogous color harmony consists of three colors that are next to each other on the color wheel.



30.6952, 28.6228, 21.9579



28.3235, 28.6228, 19.3612



25.7909, 28.6228, 19.5496

# Triad

The Triadic color harmony groups three colors that are evenly spaced from another and form a triangle on the color wheel.



28.3235, 28.6228, 19.3612



22.7705, 28.6228, 35.4724



30.9626, 28.6228, 41.7800

# Complementary

The Complementary color scheme is a pair of colors which are on the opposite of each other on the color wheel.



28.3235, 28.6228, 19.3612



22.3690, 23.8056, 39.4924

# Split Complementary

Split-complementary colors differ from the complementary color scheme. The scheme consists of three colors, the original color and two neighbors of the complement color.



28.6702, 28.6228, 46.6570



28.3235, 28.6228, 19.3612



23.9901, 28.6228, 42.6425

# Square

The Square scheme is like the rectangle color scheme, but the four colors are evenly spaced on the color wheel.



28.3235, 28.6228, 19.3612



22.6906, 28.6228, 28.1109



26.1166, 28.6228, 46.9954



32.2819, 28.6228, 34.4334



# Rectangle

The Rectangle color scheme consists of four colors that form a rectangle on the color wheel.



28.3235, 28.6228, 19.3612



24.3510, 28.6228, 21.2233



26.1166, 28.6228, 46.9954



30.2740, 28.6228, 43.8094

# Sweetspot

The Sweet Spot groups the original color and five complimentary colors.



28.3242, 28.6241, 19.3618



60.7413, 63.3398, 60.6986



25.9856, 21.4818, 26.1816



13.4515, 14.0072, 13.1802



80.6108, 84.8088, 92.3568



14.7206, 15.4872, 16.8656



# Same Dimension

The Same Dimension uses a secret algorithm to generate beautiful new colors.



28.3242, 28.6241, 19.3618



48.8781, 48.6999, 28.7318



31.7268, 36.2606, 20.6565



7.8637, 8.2075, 7.9590



15.2253, 12.3478, 1.5809



0.4202, 0.4001, 0.0551



# Inverse Universe

The Inverse Universe completely reimagines the original color for something new.



22.3690, 23.8056, 39.4924



36.3756, 38.5877, 71.0062



19.7083, 17.9664, 38.5056



7.3959, 7.8288, 9.5396



7.2695, 5.9992, 28.7503

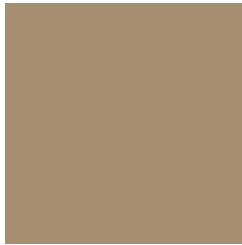


0.2283, 0.2487, 0.7166



# Previews

## White Background



This preview shows how the XYZ color 28.3235, 28.6228, 19.3612 looks on a white background.

## Color Contrast Check

Large Text (above 18pt) WCAG AA ✓ Pass

Any Text WCAG AA × Fail

Large Text (above 18pt) WCAG AAA × Fail

Any Text WCAG AAA × Fail



# Black Background



This preview shows how the XYZ color 28.3235, 28.6228, 19.3612 looks on a black background.

## Color Contrast Check

Large Text (above 18pt) WCAG AA ✓ Pass

Any Text WCAG AA ✓ Pass

Large Text (above 18pt) WCAG AAA ✓ Pass

Any Text WCAG AAA × Fail

If you want to check with other color combinations, try the [Color Contrast Checker](#).

**XYZ 28.3235, 28.6228, 19.3612**

## **Background**



This preview shows how black text looks on a background with the XYZ color 28.3235, 28.6228, 19.3612.



This preview shows how white text looks on a background with the XYZ color 28.3235, 28.6228,



# Color Blindness Simulation

Color vision deficiency is a very complex topic, and I could not describe the different causes any better than Wikipedia does, so if you want to learn more, you should check out their [article about color blindness](#).

## Dichromacy



### Original Color

28.3235, 28.6228, 19.3612

### Protanopia

26.8337, 28.7412, 20.0529

### Deuteranopia

29.0973, 28.5839, 19.3129



## Tritanopia

30.8685, 28.5755, 31.9056

# Trichromacy



## Original Color

28.3235, 28.6228, 19.3612

## Protanomaly

27.4041, 28.8140, 19.7401

## Deuteranomaly

28.8117, 28.6546, 19.3416

## Tritanomaly

29.9680, 28.6495, 26.8721

# Monochromacy



## Original Color

28.3235, 28.6228, 19.3612

## Achromatopsia

27.3213, 28.7441, 31.3023

## Achromatomaly

27.5653, 28.7443, 26.6496

# CSS Examples

## Text

The CSS property to change the color of the text to XYZ 28.3235, 28.6228, 19.3612 is called "color". The color property can be set on classes, ids or directly on the HTML element.

This example shows how text in the color `rgb(166, 142, 112)` looks like.

```
.text, #text, p{  
    color:rgb(166, 142, 112)  
}
```

If you want to add a text shadow in that color use the text-shadow property, you can generate a text shadow directly with our [CSS Text Shadow Generator](#).

Here you see how black text with a 4 pixel rgb(166, 142, 112) colored shadow looks like.

```
.shadow{ text-shadow: 4px 4px 2px rgb(166, 142, 112) }
```

## Border

The CSS property to change the border of an element to XYZ 28.3235, 28.6228, 19.3612 is called "border". The border property can be set on classes, ids or directly on the HTML element.

This example shows the color as border, it can be applied via the CSS property "border" or "border-color".

```
.border, #border, table{ border:4px solid rgb(166, 142, 112) }
```



If only the border color should be changed use the property `border-color`.

```
.border{ border-color:rgb(166, 142, 112) }
```

If you want to add a box shadow in that color use:

Here you see how a box with a 4 pixel `rgb(166, 142, 112)` colored shadow looks like.

```
.boxshadow{ -moz-box-shadow:4px 4px 4px  
4px rgb(166, 142, 112); -webkit-box-  
shadow:4px 4px 4px 4px rgb(166, 142, 112);  
box-shadow:4px 4px 4px 4px rgb(166, 142,  
112) }
```

# Background

The CSS property to change the background color of an element to XYZ 28.3235, 28.6228, 19.3612 is called "background". The background property can be set on classes, ids or directly on the HTML element.

```
.background, #background, body{  
background: rgb(166, 142, 112) }
```

If only the background color should be changed can be used:

```
.background{ background-color: rgb(166,  
142, 112) }
```

This example shows the color as background, it is applied via the CSS property "background".

To optimize and compress your CSS code, you can use our [online CSS compressor and optimizer](#) based on csstidy. If you want to create a linear or radial gradient as background or border, check our [CSS Gradient Generator](#).

Hey! You found this booklet interesting? Support Converting Colors with the new Membership Option!

The pro membership hides all ads, plus gives you double the colors in the color bucket, and more awesome pro features!

**[Learn more, Memberships starting at \\$2.50/m!](#)**

**Follow me  
on Twitter!**

@ConvertingColor