

Converting Colors

XYZ(28.3971, 27.0335, 20.5884)

Have a look what the booklet for
XYZ(28.3971, 27.0335, 20.5884)
contains.

XYZ(28.4524, 27.1583, 20.5721)	3
<i>Conversions</i>	4
<i>Details</i>	6
<i>Harmonies</i>	12
<i>Previews</i>	24
<i>Color Blindness Simulation</i>	28
<i>CSS Examples</i>	31

Color

**XYZ(28.4524, 27.1583,
20.5721)**

Conversions

Conversions Part 1

Format	Color
Hex	AA8775
RGB	170, 135, 117
RGB Percent	67%, 53%, 46%
CMY	0.3333, 0.4706, 0.5412
CMYK	0.00, 0.21, 0.31, 0.33
HSL	20°, 24%, 56%
HSV	20°, 31%, 67%
XYZ	28.4524, 27.1583, 20.5721
YIQ	143.4130, 26.6380, 1.8220

Conversions

Conversions Part 2

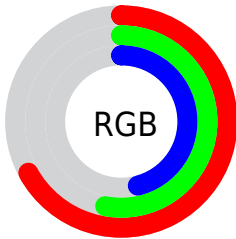
Format	Color
R_{YB}	170, 144, 117
Decimal	11175797
CIE _{Lab}	59.12, 10.68, 14.75
CIE _{LCh}	59, 18.214, 54.104
Yxy	27.1583, 0.3735, 0.3565
Android (android.graphics.Color)	4289365877 (0xFFAA8775)
YUV	143.4130, -13.0216, 23.3168
Hunter-Lab	52.1136, 6.2565, 13.0745

Details

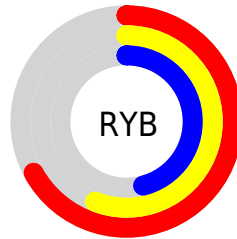
The XYZ color **28.4524, 27.1583, 20.5721** is a dark color, and the websafe version is hex **CC9999**. A complement of this color would be **25.8198, 29.1398, 42.2940**, and the grayscale version is **26.3171, 27.6877, 30.1519**.

A 20% lighter version of the original color is **56.5087, 54.9998, 45.1738**, and **11.6588, 10.7086, 7.0827** is the 20% darker color. If you saturate the color by 10%, you get **26.0579, 23.8261, 15.2824**, and if you desaturate by 10%, it is **31.1951, 30.8959, 26.8740**.

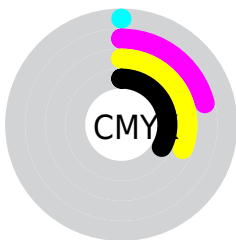
Distribution



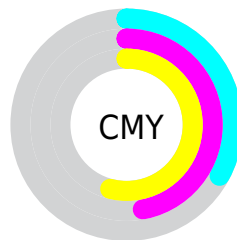
- Red (67%)
- Green (53%)
- Blue (46%)



- Red (67%)
- Yellow (56%)
- Blue (46%)



- Cyan (0%)
- Magenta (21%)
- Yellow (31%)
- Black (33%)



- Cyan (33%)
- Magenta (47%)
- Yellow (54%)

Brightness & Saturation Gradients

These gradients show how the XYZ color 28.4524, 27.1583, 20.5721 changes by changing the brightness by 10 percent. The first figure shows a shift by +10% for each color and the second figure -10%.

Similar to the brightness gradients but the following saturation gradients show a change of the XYZ color 28.4524, 27.1583, 20.5721 by changing the saturation by 10% instead.

■ 28.4524, 27.1583,
20.5721

■ 28.4524, 27.1583,
20.5721

286.6634,
288.4228, 267.7016

■ 18.8092, 17.6921,
12.6234

■ 56.6095, 55.1378,
45.2458

■ 11.6356, 10.7292,
7.0421

■ 75.8541, 74.4199,
62.8079

■ 6.5665, 5.8850,
3.4096

■ 99.0299, 97.7428,
84.4115

■ 3.2364, 2.7753,
1.3074

126.5021,
125.4909, 110.4752

■ 1.2800, 1.0156,
0.0678

158.6362,
158.0485, 141.4175

■ 0.1682, 0.0000,
0.0000

195.7976,

■ 0.0000, 0.0000,

195.8001, 177.6570

0.0000

238.3515,
239.1301, 219.6121

■ 28.4524, 27.1583,
20.5721

■ 28.4524, 27.1583,
20.5721

■ 26.0579, 23.8261,
15.2824

■ 31.1951, 30.8959,
26.8740

■ 23.9944, 20.8815,
10.9497

■ 34.2977, 35.0486,
34.2360

■ 22.2466, 18.3106,
7.5162


■ 37.7741, 39.6304,
42.7049


■ 20.7968, 16.0975,
4.9169


■ 41.6369, 44.6533,
52.3241


■ 19.6255, 14.2247,
3.0778


■ 45.8978, 50.1291,
63.1347


 18.7100, 12.6729,
1.9120

 50.5682, 56.0690,
75.1759

 18.0779, 11.5467,
1.2759

 55.6589, 62.4839,
88.4849

 61.1805, 69.3841,
103.0975

 64.6323, 75.7755,
105.8274

Harmonies

Analogous

The Analogous color harmony consists of three colors that are next to each other on the color wheel.



29.9971, 27.1583, 24.7628



28.4524, 27.1583, 20.5721



26.2632, 27.1583, 18.8161

Triad

The Triadic color harmony groups three colors that are evenly spaced from another and form a triangle on the color wheel.



28.4524, 27.1583, 20.5721



21.7180, 27.1583, 28.3076



27.6333, 27.1583, 42.4830

Complementary

The Complementary color scheme is a pair of colors which are on the opposite of each other on the color wheel.



28.4524, 27.1583, 20.5721



25.8198, 29.1398, 42.2940

Split Complementary

Split-complementary colors differ from the complementary color scheme. The scheme consists of three colors, the original color and two neighbors of the complement color.



25.3682, 27.1583, 43.7973



28.4524, 27.1583, 20.5721



22.0375, 27.1583, 34.9639

Square

The Square scheme is like the rectangle color scheme, but the four colors are evenly spaced on the color wheel.



28.4524, 27.1583, 20.5721



22.4427, 27.1583, 22.8426



23.3424, 27.1583, 40.8721



29.5052, 27.1583, 37.5052

Rectangle

The Rectangle color scheme consists of four colors that form a rectangle on the color wheel.



28.4524, 27.1583, 20.5721



24.7661, 27.1583, 19.0464



23.3424, 27.1583, 40.8721



26.8893, 27.1583, 43.3957

Sweetspot

The Sweet Spot groups the original color and five complimentary colors.



28.4531, 27.1596, 20.5727



63.4437, 65.2018, 65.0462



28.6339, 23.5469, 32.8851



13.9563, 14.2860, 14.0425



82.5889, 86.8899, 94.6231



15.4596, 16.2647, 17.7123

Same Dimension

The Same Dimension uses a secret algorithm to generate beautiful new colors.



28.4531, 27.1596, 20.5727



48.7324, 45.2681, 30.8895



32.5626, 35.3786, 21.9425



7.7317, 7.9434, 7.9150



13.3455, 8.5883, 0.9543



0.3719, 0.3034, 0.0390

Inverse Universe

The Inverse Universe completely reimagines the original color for something new.



25.8198, 29.1398, 42.2940



43.2249, 49.3899, 76.2569



22.0317, 21.5636, 41.0313



7.5297, 8.0964, 9.5842



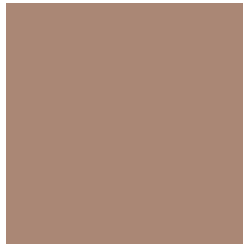
9.6733, 10.8069, 29.5516



0.2799, 0.3520, 0.7338

Previews

White Background



This preview shows how the XYZ color 28.4524, 27.1583, 20.5721 looks on a white background.

Color Contrast Check

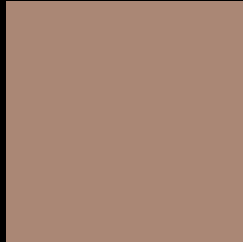
Large Text (above 18pt) WCAG AA ✓ Pass

Any Text WCAG AA × Fail

Large Text (above 18pt) WCAG AAA × Fail

Any Text WCAG AAA × Fail

Black Background



This preview shows how the XYZ color 28.4524, 27.1583, 20.5721 looks on a black background.

Color Contrast Check

Large Text (above 18pt) WCAG AA ✓ Pass

Any Text WCAG AA ✓ Pass

Large Text (above 18pt) WCAG AAA ✓ Pass

Any Text WCAG AAA × Fail

If you want to check with other color combinations, try the [Color Contrast Checker](#).

XYZ 28.4524, 27.1583, 20.5721

Background



This preview shows how black text looks on a background with the XYZ color 28.4524, 27.1583, 20.5721.



This preview shows how white text looks on a background with the XYZ color 28.4524, 27.1583,

Color Blindness Simulation

Color vision deficiency is a very complex topic, and I could not describe the different causes any better than Wikipedia does, so if you want to learn more, you should check out their [article about color blindness](#).

Dichromacy



Original Color

28.4524, 27.1583, 20.5721

Protanopia

25.6408, 27.1861, 21.6653

Deuteranopia

27.6736, 27.1750, 20.6164



Tritanopia

30.2324, 27.0698, 29.2228

Trichromacy



Original Color

28.4524, 27.1583, 20.5721

Protanomaly

26.4670, 26.9652, 21.2626

Deuteranomaly

27.9514, 27.1082, 20.5888

Tritanomaly

29.4982, 26.9666, 25.8407

Monochromacy



Original Color

28.4524, 27.1583, 20.5721

Achromatopsia

26.1081, 27.4677, 29.9124

Achromatomaly

26.8180, 27.2497, 26.4005

CSS Examples

Text

The CSS property to change the color of the text to XYZ 28.4524, 27.1583, 20.5721 is called "color". The color property can be set on classes, ids or directly on the HTML element.

This example shows how text in the color `rgb(170, 135, 117)` looks like.

```
.text, #text, p{  
    color:rgb(170, 135, 117)  
}
```

If you want to add a text shadow in that color use the text-shadow property, you can generate a text shadow directly with our [CSS Text Shadow Generator](#).

Here you see how black text with a 4 pixel rgb(170, 135, 117) colored shadow looks like.

```
.shadow{ text-shadow: 4px 4px 2px rgb(170, 135, 117) }
```

Border

The CSS property to change the border of an element to XYZ 28.4524, 27.1583, 20.5721 is called "border". The border property can be set on classes, ids or directly on the HTML element.

This example shows the color as border, it can be applied via the CSS property "border" or "border-color".

```
.border, #border, table{ border:4px solid rgb(170, 135, 117) }
```


If only the border color should be changed use the property `border-color`.

```
.border{ border-color:rgb(170, 135, 117) }
```

If you want to add a box shadow in that color use:

Here you see how a box with a 4 pixel `rgb(170, 135, 117)` colored shadow looks like.

```
.boxshadow{ -moz-box-shadow:4px 4px 4px  
4px rgb(170, 135, 117); -webkit-box-  
shadow:4px 4px 4px 4px rgb(170, 135, 117);  
box-shadow:4px 4px 4px 4px rgb(170, 135,  
117) }
```

Background

The CSS property to change the background color of an element to XYZ 28.4524, 27.1583, 20.5721 is called "background". The background property can be set on classes, ids or directly on the HTML element.

```
.background, #background, body{  
background: rgb(170, 135, 117) }
```

If only the background color should be changed can be used:

```
.background{ background-color: rgb(170,  
135, 117) }
```

This example shows the color as background, it is applied via the CSS property "background".

To optimize and compress your CSS code, you can use our [online CSS compressor and optimizer](#) based on csstidy. If you want to create a linear or radial gradient as background or border, check our [CSS Gradient Generator](#).

Hey! You found this booklet interesting? Support Converting Colors with the new Membership Option!

The pro membership hides all ads, plus gives you double the colors in the color bucket, and more awesome pro features!

[Learn more, Memberships starting at \\$2.50/m!](#)

**Follow me
on Twitter!**

@ConvertingColor