

Converting Colors

XYZ(28.3980, 26.0602, 10.4812)

Have a look what the booklet for
XYZ(28.3980, 26.0602, 10.4812)
contains.

XYZ(28.4812, 26.1814, 10.5736)	3
<i>Conversions</i>	4
<i>Details</i>	6
<i>Harmonies</i>	12
<i>Previews</i>	24
<i>Color Blindness Simulation</i>	28
<i>CSS Examples</i>	31

Color

**XYZ(28.4812, 26.1814,
10.5736)**

Conversions

Conversions Part 1

Format	Color
Hex	B6814D
RGB	182, 129, 77
RGB Percent	71%, 51%, 30%
CMY	0.2863, 0.4941, 0.6980
CMYK	0.00, 0.29, 0.58, 0.29
HSL	30°, 42%, 51%
HSV	30°, 58%, 71%
XYZ	28.4812, 26.1814, 10.5736
YIQ	138.9190, 48.2800, -4.9360

Conversions

Conversions Part 2

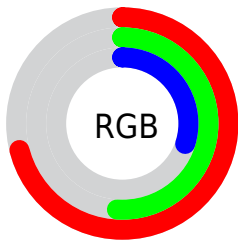
Format	Color
R_{YB}	182, 180, 77
Decimal	11960653
CIE _{Lab}	58.21, 14.72, 36.02
CIE _{LCh}	58, 38.910, 67.768
Yxy	26.1814, 0.4366, 0.4013
Android (android.graphics.Color)	4290150733 (0xFFB6814D)
YUV	138.9190, -30.5261, 37.7820
Hunter-Lab	51.1678, 9.8138, 23.5654

Details

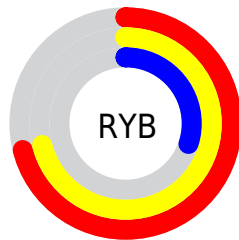
The XYZ color **28.4812, 26.1814, 10.5736** is a dark color, and the websafe version is hex **CC9966**. A complement of this color would be **19.4863, 20.9195, 47.2666**, and the grayscale version is **24.6108, 25.8924, 28.1969**.

A 20% lighter version of the original color is **56.4939, 53.5135, 27.4303**, and **11.7072, 10.2667, 2.5929** is the 20% darker color. If you saturate the color by 10%, you get **26.7703, 23.6482, 7.2644**, and if you desaturate by 10%, it is **30.4819, 29.0067, 14.8669**.

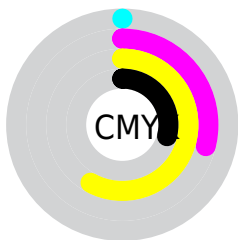
Distribution



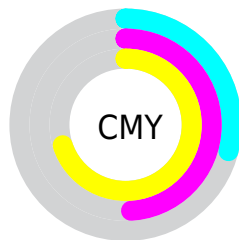
- Red (71%)
- Green (51%)
- Blue (30%)



- Red (71%)
- Yellow (71%)
- Blue (30%)



- Cyan (0%)
- Magenta (29%)
- Yellow (58%)
- Black (29%)



- Cyan (29%)
- Magenta (49%)
- Yellow (70%)
- Black (29%)

Brightness & Saturation Gradients

These gradients show how the XYZ color 28.4812, 26.1814, 10.5736 changes by changing the brightness by 10 percent. The first figure shows a shift by +10% for each color and the second figure -10%.

Similar to the brightness gradients but the following saturation gradients show a change of the XYZ color 28.4812, 26.1814, 10.5736 by changing the saturation by 10% instead.

■ 28.4812, 26.1814,
10.5736

■ 28.4812, 26.1814,
10.5736

286.7977,
283.6714, 205.3497

■ 18.8310, 16.9594,
5.6704

■ 56.6551, 53.5674,
27.4934

■ 11.6515, 10.2055,
2.5802

■ 75.9095, 72.5003,
40.3471

■ 6.5774, 5.5355,
0.8822

■ 99.0960, 95.4388,
56.6880

■ 3.2432, 2.5647,
0.0000

■ 126.5800,
122.7675, 76.9346

■ 1.2836, 0.9090,
0.0000

■ 158.7268,
154.8707, 101.5056

■ 0.1709, 0.0000,
0.0000

195.9018,

■ 0.0000, 0.0000,

192.1329, 130.8194

0.0000

238.4703,
234.9383, 165.2946

■ 28.4812, 26.1814,
10.5736

■ 28.4812, 26.1814,
10.5736

■ 26.7703, 23.6482,
7.2644

■ 30.4819, 29.0067,
14.8669

■ 25.3291, 21.3913,
4.8555

■ 32.7870, 32.1312,
20.2155

■ 24.1373, 19.3990,
3.2517

■ 35.4120, 35.5663,
26.6857

■ 23.1641, 17.6539,
2.3073

■ 38.3709, 39.3218,
34.3379

■ 22.9593, 17.2811,
2.1255

■ 41.6765, 43.4067,
43.2283

■ 45.3412, 47.8298,
53.4091

■ 49.3763, 52.5994,
64.9298

■ 53.7931, 57.7237,
77.8372

■ 58.6019, 63.2102,
92.1757

Harmonies

Analogous

The Analogous color harmony consists of three colors that are next to each other on the color wheel.



32.7758, 26.1814, 15.3607



28.4812, 26.1814, 10.5736



23.6773, 26.1814, 9.7226

Triad

The Triadic color harmony groups three colors that are evenly spaced from another and form a triangle on the color wheel.



28.4812, 26.1814, 10.5736



16.9276, 26.1814, 32.1689



30.8713, 26.1814, 54.4051

Complementary

The Complementary color scheme is a pair of colors which are on the opposite of each other on the color wheel.



28.4812, 26.1814, 10.5736



19.4863, 20.9195, 47.2666

Split Complementary

Split-complementary colors differ from the complementary color scheme. The scheme consists of three colors, the original color and two neighbors of the complement color.



26.1324, 26.1814, 62.8215



28.4812, 26.1814, 10.5736



18.3741, 26.1814, 47.5874

Square

The Square scheme is like the rectangle color scheme, but the four colors are evenly spaced on the color wheel.



28.4812, 26.1814, 10.5736



17.3895, 26.1814, 19.7555



21.6044, 26.1814, 59.9949



34.2729, 26.1814, 39.5232

Rectangle

The Rectangle color scheme consists of four colors that form a rectangle on the color wheel.



28.4812, 26.1814, 10.5736



20.8890, 26.1814, 11.1311



21.6044, 26.1814, 59.9949



29.3599, 26.1814, 58.2684

Sweetspot

The Sweet Spot groups the original color and five complimentary colors.



28.4818, 26.1827, 10.5741



69.7961, 71.5776, 62.8612



26.0590, 16.8985, 23.4502



15.1672, 15.4975, 13.2293



88.6918, 93.3107, 101.6153



17.8044, 18.7317, 20.3988

Same Dimension

The Same Dimension uses a secret algorithm to generate beautiful new colors.



28.4818, 26.1827, 10.5741



47.8433, 41.8150, 11.9430



37.0026, 43.2243, 13.4144



9.3621, 9.7271, 9.4910



16.2801, 12.3366, 1.5231



0.6359, 0.5588, 0.0743

Inverse Universe

The Inverse Universe completely reimagines the original color for something new.



19.4863, 20.9195, 47.2666



30.0012, 31.3724, 84.7100



14.2823, 10.5114, 45.5319



8.8856, 9.4485, 11.4348



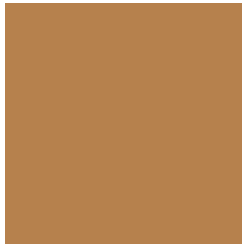
8.7234, 7.9065, 32.3194



0.3694, 0.4024, 1.1600

Previews

White Background



This preview shows how the XYZ color 28.4812, 26.1814, 10.5736 looks on a white background.

Color Contrast Check

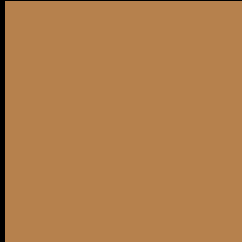
Large Text (above 18pt) WCAG AA ✓ Pass

Any Text WCAG AA × Fail

Large Text (above 18pt) WCAG AAA × Fail

Any Text WCAG AAA × Fail

Black Background



This preview shows how the XYZ color 28.4812, 26.1814, 10.5736 looks on a black background.

Color Contrast Check

Large Text (above 18pt) WCAG AA ✓ Pass

Any Text WCAG AA ✓ Pass

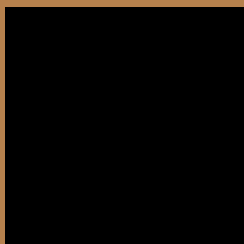
Large Text (above 18pt) WCAG AAA ✓ Pass

Any Text WCAG AAA × Fail

If you want to check with other color combinations, try the [Color Contrast Checker](#).

XYZ 28.4812, 26.1814, 10.5736

Background



This preview shows how black text looks on a background with the XYZ color 28.4812, 26.1814, 10.5736.



This preview shows how white text looks on a background with the XYZ color 28.4812, 26.1814,

Color Blindness Simulation

Color vision deficiency is a very complex topic, and I could not describe the different causes any better than Wikipedia does, so if you want to learn more, you should check out their [article about color blindness](#).

Dichromacy



Original Color

28.4812, 26.1814, 10.5736

Protanopia

24.1897, 26.2203, 11.5707

Deuteranopia

26.8429, 26.3427, 10.5073



Tritanopia

31.3741, 26.0241, 25.1994

Trichromacy



Original Color

28.4812, 26.1814, 10.5736

Protanomaly

25.5620, 26.0800, 11.2761

Deuteranomaly

27.4603, 26.2544, 10.4578

Tritanomaly

30.2658, 26.1514, 18.7818

Monochromacy



Original Color

28.4812, 26.1814, 10.5736

Achromatopsia

24.5403, 25.8183, 28.1161

Achromatomaly

25.3339, 25.5575, 20.1208

CSS Examples

Text

The CSS property to change the color of the text to XYZ 28.4812, 26.1814, 10.5736 is called "color". The color property can be set on classes, ids or directly on the HTML element.

This example shows how text in the color `rgb(182, 129, 77)` looks like.

```
.text, #text, p{  
    color:rgb(182, 129, 77)  
}
```

If you want to add a text shadow in that color use the text-shadow property, you can generate a text shadow directly with our [CSS Text Shadow Generator](#).

Here you see how black text with a 4 pixel rgb(182, 129, 77) colored shadow looks like.

```
.shadow{ text-shadow: 4px 4px 2px rgb(182, 129, 77) }
```

Border

The CSS property to change the border of an element to XYZ 28.4812, 26.1814, 10.5736 is called "border". The border property can be set on classes, ids or directly on the HTML element.

This example shows the color as border, it can be applied via the CSS property "border" or "border-color".

```
.border, #border, table{ border:4px solid rgb(182, 129, 77) }
```


If only the border color should be changed use the property `border-color`.

```
.border{ border-color:rgb(182, 129, 77) }
```

If you want to add a box shadow in that color use:

Here you see how a box with a 4 pixel `rgb(182, 129, 77)` colored shadow looks like.

```
.boxshadow{ -moz-box-shadow:4px 4px 4px  
4px rgb(182, 129, 77); -webkit-box-  
shadow:4px 4px 4px 4px rgb(182, 129, 77);  
box-shadow:4px 4px 4px 4px rgb(182, 129,  
77) }
```

Background

The CSS property to change the background color of an element to XYZ 28.4812, 26.1814, 10.5736 is called "background". The background property can be set on classes, ids or directly on the HTML element.

```
.background, #background, body{  
background: rgb(182, 129, 77) }
```

If only the background color should be changed can be used:

```
.background{ background-color: rgb(182,  
129, 77) }
```

This example shows the color as background, it is applied via the CSS property "background".

To optimize and compress your CSS code, you can use our [online CSS compressor and optimizer](#) based on csstidy. If you want to create a linear or radial gradient as background or border, check our [CSS Gradient Generator](#).

Hey! You found this booklet interesting? Support Converting Colors with the new Membership Option!

The pro membership hides all ads, plus gives you double the colors in the color bucket, and more awesome pro features!

[Learn more, Memberships starting at \\$2.50/m!](#)

**Follow me
on Twitter!**

@ConvertingColor