

Converting Colors

XYZ(28.4270, 26.5044, 12.6344)

Have a look what the booklet for
XYZ(28.4270, 26.5044, 12.6344)
contains.

XYZ(28.4270, 26.5044, 12.6344)	3
<i>Conversions</i>	4
<i>Details</i>	6
<i>Harmonies</i>	12
<i>Previews</i>	24
<i>Color Blindness Simulation</i>	28
<i>CSS Examples</i>	31

Color

**XYZ(28.4270, 26.5044,
12.6344)**

Conversions

Conversions Part 1

Format	Color
Hex	B38357
RGB	179, 131, 87
RGB Percent	70%, 51%, 34%
CMY	0.2980, 0.4863, 0.6588
CMYK	0.00, 0.27, 0.51, 0.30
HSL	29°, 38%, 52%
HSV	29°, 51%, 70%
XYZ	28.4270, 26.5044, 12.6344
YIQ	140.3360, 42.7320, -3.5080

Conversions

Conversions Part 2

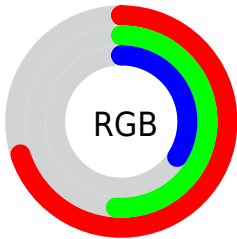
Format	Color
R_{YB}	179, 171, 87
Decimal	11764567
CIE _{Lab}	58.51, 13.20, 30.92
CIE _{LCh}	59, 33.620, 66.883
Yxy	26.5044, 0.4207, 0.3923
Android (android.graphics.Color)	4289954647 (0xFFB38357)
YUV	140.3360, -26.2946, 33.9083
Hunter-Lab	51.4824, 8.4679, 21.4872

Details

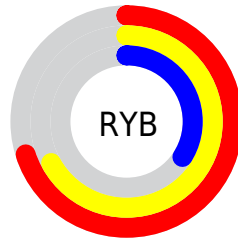
The XYZ color **28.4270, 26.5044, 12.6344** is a dark color, and the websafe version is hex **CC9966**. A complement of this color would be **20.7307, 22.6079, 45.9188**, and the grayscale version is **25.1461, 26.4557, 28.8102**.

A 20% lighter version of the original color is **56.6530, 54.1205, 31.5051**, and **11.7125, 10.4729, 3.4116** is the 20% darker color. If you saturate the color by 10%, you get **26.5863, 23.8519, 8.8494**, and if you desaturate by 10%, it is **30.5634, 29.4582, 17.4131**.

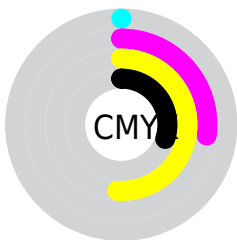
Distribution



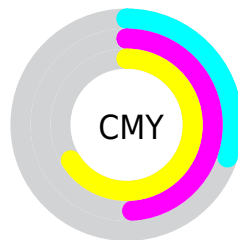
- Red (70%)
- Green (51%)
- Blue (34%)



- Red (70%)
- Yellow (67%)
- Blue (34%)



- Cyan (0%)
- Magenta (27%)
- Yellow (51%)
- Black (30%)



- Cyan (30%)
- Magenta (49%)
- Yellow (66%)

Brightness & Saturation Gradients

These gradients show how the XYZ color 28.4270, 26.5044, 12.6344 changes by changing the brightness by 10 percent. The first figure shows a shift by +10% for each color and the second figure -10%.

Similar to the brightness gradients but the following saturation gradients show a change of the XYZ color 28.4270, 26.5044, 12.6344 by changing the saturation by 10% instead.

■ 28.4270, 26.5044,
12.6344

■ 28.4270, 26.5044,
12.6344

286.5449,
285.2494, 219.6860

■ 18.7899, 17.2014,
7.0495

■ 56.5693, 54.0876,
31.3269

■ 11.6217, 10.3782,
3.4142

■ 75.8053, 73.1365,
45.2716

■ 6.5570, 5.6504,
1.3098

■ 98.9715, 96.2028,
62.8399

■ 3.2305, 2.6337,
0.0698

■ 126.4334,
123.6709, 84.4505

■ 1.2768, 0.9436,
0.0000

■ 158.5564,
155.9253, 110.5219

■ 0.1657, 0.0000,
0.0000

195.7057,

■ 0.0000, 0.0000,

193.3502, 141.4726

0.0000

238.2468,
236.3301, 177.7211

■ 28.4270, 26.5044,
12.6344

■ 28.4270, 26.5044,
12.6344

■ 26.5863, 23.8519,
8.8494

■ 30.5634, 29.4582,
17.4131

■ 25.0228, 21.4854,
5.9835

■ 33.0086, 32.7199,
23.2496

■ 23.7183, 19.3936,
3.9543

■ 35.7774, 36.3009,
30.2040

■ 22.6512, 17.5629,
2.6632

■ 38.8826, 40.2107,
38.3319

■ 21.8876, 16.1782,
1.9691

■ 42.3366, 44.4582,
47.6847

■ 46.1508, 49.0521,
58.3111

■ 50.3362, 54.0007,
70.2569

■ 54.9034, 59.3119,
83.5657

■ 59.8624, 64.9934,
98.2791

Harmonies

Analogous

The Analogous color harmony consists of three colors that are next to each other on the color wheel.



32.0639, 26.5044, 17.2848



28.4270, 26.5044, 12.6344



24.2555, 26.5044, 11.7035

Triad

The Triadic color harmony groups three colors that are evenly spaced from another and form a triangle on the color wheel.



28.4270, 26.5044, 12.6344



18.1256, 26.5044, 31.6599



30.2441, 26.5044, 51.0388

Complementary

The Complementary color scheme is a pair of colors which are on the opposite of each other on the color wheel.



28.4270, 26.5044, 12.6344



20.7307, 22.6079, 45.9188

Split Complementary

Split-complementary colors differ from the complementary color scheme. The scheme consists of three colors, the original color and two neighbors of the complement color.



26.1516, 26.5044, 57.7018



28.4270, 26.5044, 12.6344



19.3790, 26.5044, 44.7041

Square

The Square scheme is like the rectangle color scheme, but the four colors are evenly spaced on the color wheel.



28.4270, 26.5044, 12.6344



18.5939, 26.5044, 20.8462



22.2116, 26.5044, 55.1133



33.1903, 26.5044, 38.6993

Rectangle

The Rectangle color scheme consists of four colors that form a rectangle on the color wheel.



28.4270, 26.5044, 12.6344



21.7812, 26.5044, 13.0006



22.2116, 26.5044, 55.1133



28.9407, 26.5044, 54.1505

Sweetspot

The Sweet Spot groups the original color and five complimentary colors.



28.4276, 26.5057, 12.6349



67.4198, 69.2446, 62.7813



26.4474, 18.1798, 25.4327



14.6798, 15.0176, 13.2363



86.6293, 91.1408, 99.2523



17.0014, 17.8868, 19.4787

Same Dimension

The Same Dimension uses a secret algorithm to generate beautiful new colors.



28.4276, 26.5057, 12.6349



47.1197, 41.9834, 14.8916



35.8229, 41.2963, 15.1000



8.8205, 9.1535, 8.9544



15.5313, 11.5612, 1.4129



0.5472, 0.4808, 0.0640

Inverse Universe

The Inverse Universe completely reimagines the original color for something new.



20.7307, 22.6079, 45.9188



31.7531, 34.1906, 81.3071



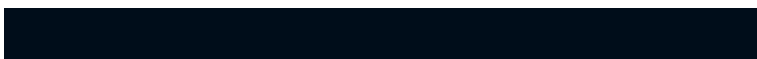
15.7292, 12.6048, 44.2517



8.3965, 8.9392, 10.7892



8.6052, 8.0108, 31.2297



0.3287, 0.3680, 1.0019

Previews

White Background



This preview shows how the XYZ color 28.4270, 26.5044, 12.6344 looks on a white background.

Color Contrast Check

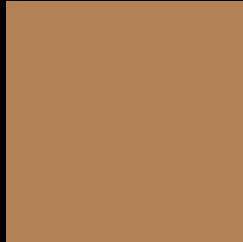
Large Text (above 18pt) WCAG AA ✓ Pass

Any Text WCAG AA × Fail

Large Text (above 18pt) WCAG AAA × Fail

Any Text WCAG AAA × Fail

Black Background



This preview shows how the XYZ color 28.4270, 26.5044, 12.6344 looks on a black background.

Color Contrast Check

Large Text (above 18pt) WCAG AA ✓ Pass

Any Text WCAG AA ✓ Pass

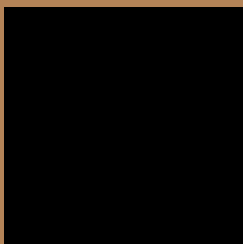
Large Text (above 18pt) WCAG AAA ✓ Pass

Any Text WCAG AAA × Fail

If you want to check with other color combinations, try the [Color Contrast Checker](#).

XYZ 28.4270, 26.5044, 12.6344

Background



This preview shows how black text looks on a background with the XYZ color 28.4270, 26.5044, 12.6344.



This preview shows how white text looks on a background with the XYZ color 28.4270, 26.5044,

Color Blindness Simulation

Color vision deficiency is a very complex topic, and I could not describe the different causes any better than Wikipedia does, so if you want to learn more, you should check out their [article about color blindness](#).

Dichromacy



Original Color

28.4270, 26.5044, 12.6344

Protanopia

24.5501, 26.5774, 13.7336

Deuteranopia

27.1383, 26.6578, 12.5192



Tritanopia

31.2352, 26.4838, 26.3873

Trichromacy



Original Color

28.4270, 26.5044, 12.6344

Protanomaly

25.6914, 26.3109, 13.3973

Deuteranomaly

27.6604, 26.7208, 12.5039

Tritanomaly

30.1508, 26.4318, 20.6523

Monochromacy



Original Color

28.4270, 26.5044, 12.6344

Achromatopsia

24.9269, 26.2251, 28.5591

Achromatomaly

25.7233, 26.1418, 21.7793

CSS Examples

Text

The CSS property to change the color of the text to XYZ 28.4270, 26.5044, 12.6344 is called "color". The color property can be set on classes, ids or directly on the HTML element.

This example shows how text in the color `rgb(179, 131, 87)` looks like.

```
.text, #text, p{  
    color:rgb(179, 131, 87)  
}
```

If you want to add a text shadow in that color use the text-shadow property, you can generate a text shadow directly with our [CSS Text Shadow Generator](#).

Here you see how black text with a 4 pixel rgb(179, 131, 87) colored shadow looks like.

```
.shadow{ text-shadow: 4px 4px 2px rgb(179, 131, 87) }
```

Border

The CSS property to change the border of an element to XYZ 28.4270, 26.5044, 12.6344 is called "border". The border property can be set on classes, ids or directly on the HTML element.

This example shows the color as border, it can be applied via the CSS property "border" or "border-color".

```
.border, #border, table{ border:4px solid rgb(179, 131, 87) }
```


If only the border color should be changed use the property `border-color`.

```
.border{ border-color:rgb(179, 131, 87) }
```

If you want to add a box shadow in that color use:

Here you see how a box with a 4 pixel `rgb(179, 131, 87)` colored shadow looks like.

```
.boxshadow{ -moz-box-shadow:4px 4px 4px  
4px rgb(179, 131, 87); -webkit-box-  
shadow:4px 4px 4px 4px rgb(179, 131, 87);  
box-shadow:4px 4px 4px 4px rgb(179, 131,  
87) }
```

Background

The CSS property to change the background color of an element to XYZ 28.4270, 26.5044, 12.6344 is called "background". The background property can be set on classes, ids or directly on the HTML element.

```
.background, #background, body{  
background: rgb(179, 131, 87) }
```

If only the background color should be changed can be used:

```
.background{ background-color: rgb(179,  
131, 87) }
```

This example shows the color as background, it is applied via the CSS property "background".

To optimize and compress your CSS code, you can use our [online CSS compressor and optimizer](#) based on csstidy. If you want to create a linear or radial gradient as background or border, check our [CSS Gradient Generator](#).

Hey! You found this booklet interesting? Support Converting Colors with the new Membership Option!

The pro membership hides all ads, plus gives you double the colors in the color bucket, and more awesome pro features!

[Learn more, Memberships starting at \\$2.50/m!](#)

**Follow me
on Twitter!**

@ConvertingColor