

Converting Colors

XYZ(28.5167, 26.6239, 16.3321)

Have a look what the booklet for
XYZ(28.5167, 26.6239, 16.3321)
contains.

XYZ(28.5540, 26.6919, 16.2175)	3
<i>Conversions</i>	4
<i>Details</i>	6
<i>Harmonies</i>	12
<i>Previews</i>	24
<i>Color Blindness Simulation</i>	28
<i>CSS Examples</i>	31

Color

**XYZ(28.5540, 26.6919,
16.2175)**

Conversions

Conversions Part 1

Format	Color
Hex	B08466
RGB	176, 132, 102
RGB Percent	69%, 52%, 40%
CMY	0.3098, 0.4823, 0.6000
CMYK	0.00, 0.25, 0.42, 0.31
HSL	24°, 32%, 55%
HSV	24°, 42%, 69%
XYZ	28.5540, 26.6919, 16.2175
YIQ	141.7360, 35.8540, -0.0020

Conversions

Conversions Part 2

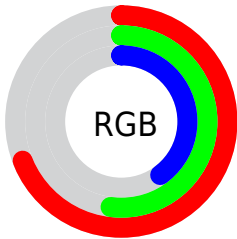
Format	Color
R _Y B	176, 152, 102
Decimal	11568230
CIE Lab	58.69, 12.94, 22.76
CIE LCh	59, 26.179, 60.374
Yxy	26.6919, 0.3996, 0.3735
Android (android.graphics.Color)	4289758310 (0xFFB08466)
YUV	141.7360, -19.5898, 30.0495
Hunter-Lab	51.6642, 8.2418, 17.5537

Details

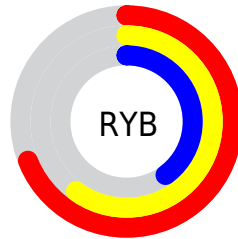
The XYZ color **28.5540, 26.6919, 16.2175** is a dark color, and the websafe version is hex **CC9966**. A complement of this color would be **23.5945, 26.5162, 44.9488**, and the grayscale version is **25.6724, 27.0093, 29.4132**.

A 20% lighter version of the original color is **56.7030, 54.3215, 37.6335**, and **11.7329, 10.4480, 5.0127** is the 20% darker color. If you saturate the color by 10%, you get **26.4237, 23.6830, 11.6488**, and if you desaturate by 10%, it is **31.0133, 30.0622, 21.8107**.

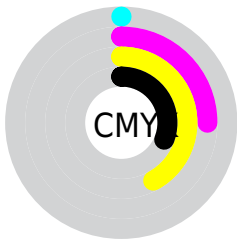
Distribution



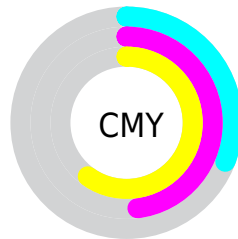
- Red (69%)
- Green (52%)
- Blue (40%)



- Red (69%)
- Yellow (60%)
- Blue (40%)



- Cyan (0%)
- Magenta (25%)
- Yellow (42%)
- Black (31%)





- Cyan (31%)
- Magenta (48%)
- Yellow (60%)

Brightness & Saturation Gradients


These gradients show how the XYZ color 28.5540, 26.6919, 16.2175 changes by changing the brightness by 10 percent. The first figure shows a shift by +10% for each color and the second figure -10%.

Similar to the brightness gradients but the following saturation gradients show a change of the XYZ color 28.5540, 26.6919, 16.2175 by changing the saturation by 10% instead.


 28.5540, 26.6919,
16.2175


 28.5540, 26.6919,
16.2175


287.1371,
286.1622, 242.5111


 18.8863, 17.3420,
9.5222


 56.7702, 54.3891,
37.7474


 11.6916, 10.4786,
4.9819


 76.0494, 73.5051,
53.4191

 6.6048, 5.7174,
2.1781


 99.2631, 96.6453,
72.9200

 3.2603, 2.6740,
0.6617

 126.7767,
124.1940, 96.6686

 1.2929, 0.9640,
0.0000

158.9555,
156.5357, 125.0834

 0.1779, 0.0000,
0.0000

196.1650,

 0.0000, 0.0000,

194.0547, 158.5831

0.0000

238.7704,
237.1354, 197.5862

■ 28.5540, 26.6919,
16.2175

■ 28.5540, 26.6919,
16.2175

■ 26.4237, 23.6830,
11.6488

■ 31.0133, 30.0622,
21.8107

■ 24.6044, 21.0186,
8.0392

■ 33.8144, 33.8024,
28.4850

■ 23.0793, 18.6859,
5.3184

■ 36.9719, 37.9253,
36.2946

■ 21.8285, 16.6697,
3.4053

■ 40.4985, 42.4422,
45.2898

■ 20.8294, 14.9531,
2.2039

■ 44.4068, 47.3637,
55.5175

■ 20.1807, 13.7825,
1.5967

■ 48.7083, 52.6999,
67.0225

■ 53.4142, 58.4607,
79.8470

■ 58.5353, 64.6555,
94.0313

■ 63.1998, 70.9408,
104.9697

Harmonies

Analogous

The Analogous color harmony consists of three colors that are next to each other on the color wheel.



31.0928, 26.6919, 20.9901



28.5540, 26.6919, 16.2175



25.3295, 26.6919, 14.6973

Triad

The Triadic color harmony groups three colors that are evenly spaced from another and form a triangle on the color wheel.



28.5540, 26.6919, 16.2175



19.6705, 26.6919, 29.1788



28.6298, 26.6919, 47.1942

Complementary

The Complementary color scheme is a pair of colors which are on the opposite of each other on the color wheel.



28.5540, 26.6919, 16.2175



23.5945, 26.5162, 44.9488

Split Complementary

Split-complementary colors differ from the complementary color scheme. The scheme consists of three colors, the original color and two neighbors of the complement color.



25.4103, 26.6919, 50.6352



28.5540, 26.6919, 16.2175



20.3961, 26.6919, 38.9784

Square

The Square scheme is like the rectangle color scheme, but the four colors are evenly spaced on the color wheel.



28.5540, 26.6919, 16.2175



20.3612, 26.6919, 21.1518



22.4317, 26.6919, 47.3541



31.1391, 26.6919, 38.7352

Rectangle

The Rectangle color scheme consists of four colors that form a rectangle on the color wheel.



28.5540, 26.6919, 16.2175



23.2756, 26.6919, 15.4122



22.4317, 26.6919, 47.3541



27.5861, 26.6919, 49.0471

Sweetspot

The Sweet Spot groups the original color and five complimentary colors.



28.5547, 26.6932, 16.2180



66.3431, 67.8628, 64.0407



27.8755, 20.8209, 29.9074



14.1004, 14.3469, 13.1868



84.5950, 89.0005, 96.9216



16.2198, 17.0645, 18.5832

Same Dimension

The Same Dimension uses a secret algorithm to generate beautiful new colors.



28.5547, 26.6932, 16.2180



48.3462, 43.5588, 22.0039



34.4164, 38.4167, 18.1720



8.7698, 9.0522, 8.9375



14.8614, 10.2213, 1.1896



0.5256, 0.4375, 0.0568

Inverse Universe

The Inverse Universe completely reimagines the original color for something new.



23.5945, 26.5162, 44.9488



38.1783, 43.1692, 80.8156



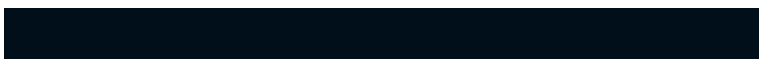
18.8276, 16.9825, 43.3598



8.4479, 9.0420, 10.8064



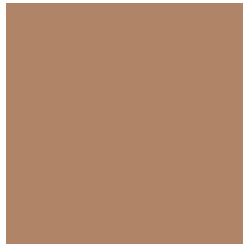
9.4879, 9.7761, 31.5239



0.3540, 0.4186, 1.0104

Previews

White Background



This preview shows how the XYZ color 28.5540, 26.6919, 16.2175 looks on a white background.

Color Contrast Check

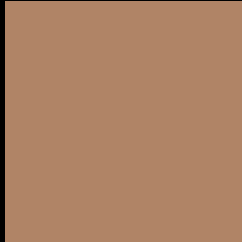
Large Text (above 18pt) WCAG AA ✓ Pass

Any Text WCAG AA × Fail

Large Text (above 18pt) WCAG AAA × Fail

Any Text WCAG AAA × Fail

Black Background



This preview shows how the XYZ color 28.5540, 26.6919, 16.2175 looks on a black background.

Color Contrast Check

Large Text (above 18pt) WCAG AA ✓ Pass

Any Text WCAG AA ✓ Pass

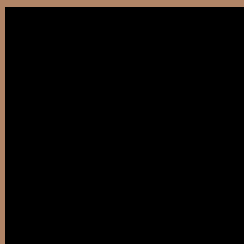
Large Text (above 18pt) WCAG AAA ✓ Pass

Any Text WCAG AAA × Fail

If you want to check with other color combinations, try the [Color Contrast Checker](#).

XYZ 28.5540, 26.6919, 16.2175

Background



This preview shows how black text looks on a background with the XYZ color 28.5540, 26.6919, 16.2175.



This preview shows how white text looks on a background with the XYZ color 28.5540, 26.6919,

Color Blindness Simulation

Color vision deficiency is a very complex topic, and I could not describe the different causes any better than Wikipedia does, so if you want to learn more, you should check out their [article about color blindness](#).

Dichromacy



Original Color

28.5540, 26.6919, 16.2175

Protanopia

25.0753, 26.7658, 17.4804

Deuteranopia

27.1614, 26.5924, 16.0132



Tritanopia

30.6951, 26.5686, 27.1774

Trichromacy



Original Color

28.5540, 26.6919, 16.2175

Protanomaly

26.3362, 26.7739, 17.1444

Deuteranomaly

27.6686, 26.6477, 15.9971

Tritanomaly

29.8484, 26.6207, 22.6339

Monochromacy



Original Color

28.5540, 26.6919, 16.2175

Achromatopsia

25.7108, 27.0498, 29.4572

Achromatomaly

26.2457, 26.5793, 23.8257

CSS Examples

Text

The CSS property to change the color of the text to XYZ 28.5540, 26.6919, 16.2175 is called "color". The color property can be set on classes, ids or directly on the HTML element.

This example shows how text in the color `rgb(176, 132, 102)` looks like.

```
.text, #text, p{  
    color:rgb(176, 132, 102)  
}
```

If you want to add a text shadow in that color use the text-shadow property, you can generate a text shadow directly with our [CSS Text Shadow Generator](#).

Here you see how black text with a 4 pixel rgb(176, 132, 102) colored shadow looks like.

```
.shadow{ text-shadow: 4px 4px 2px rgb(176, 132, 102) }
```

Border

The CSS property to change the border of an element to XYZ 28.5540, 26.6919, 16.2175 is called "border". The border property can be set on classes, ids or directly on the HTML element.

This example shows the color as border, it can be applied via the CSS property "border" or "border-color".

```
.border, #border, table{ border:4px solid rgb(176, 132, 102) }
```


If only the border color should be changed use the property `border-color`.

```
.border{ border-color:rgb(176, 132, 102) }
```

If you want to add a box shadow in that color use:

Here you see how a box with a 4 pixel `rgb(176, 132, 102)` colored shadow looks like.

```
.boxshadow{ -moz-box-shadow:4px 4px 4px  
4px rgb(176, 132, 102); -webkit-box-  
shadow:4px 4px 4px 4px rgb(176, 132, 102);  
box-shadow:4px 4px 4px 4px rgb(176, 132,  
102) }
```

Background

The CSS property to change the background color of an element to XYZ 28.5540, 26.6919, 16.2175 is called "background". The background property can be set on classes, ids or directly on the HTML element.

```
.background, #background, body{  
background: rgb(176, 132, 102) }
```

If only the background color should be changed can be used:

```
.background{ background-color: rgb(176,  
132, 102) }
```

This example shows the color as background, it is applied via the CSS property "background".

To optimize and compress your CSS code, you can use our [online CSS compressor and optimizer](#) based on csstidy. If you want to create a linear or radial gradient as background or border, check our [CSS Gradient Generator](#).

Hey! You found this booklet interesting? Support Converting Colors with the new Membership Option!

The pro membership hides all ads, plus gives you double the colors in the color bucket, and more awesome pro features!

[Learn more, Memberships starting at \\$2.50/m!](#)

**Follow me
on Twitter!**

@ConvertingColor