

Converting Colors

XYZ(28.5762, 24.4660, 21.2620)

Have a look what the booklet for
XYZ(28.5762, 24.4660, 21.2620)
contains.

XYZ(28.6487, 24.5202, 21.3121)	3
<i>Conversions</i>	4
<i>Details</i>	6
<i>Harmonies</i>	12
<i>Previews</i>	24
<i>Color Blindness Simulation</i>	28
<i>CSS Examples</i>	31

Color

**XYZ(28.6487, 24.5202,
21.3121)**

Conversions

Conversions Part 1

Format	Color
Hex	B27979
RGB	178, 121, 121
RGB Percent	70%, 47%, 47%
CMY	0.3020, 0.5255, 0.5255
CMYK	0.00, 0.32, 0.32, 0.30
HSL	0°, 27%, 59%
HSV	0°, 32%, 70%
XYZ	28.6487, 24.5202, 21.3121
YIQ	138.0430, 33.9720, 12.0840

Conversions

Conversions Part 2

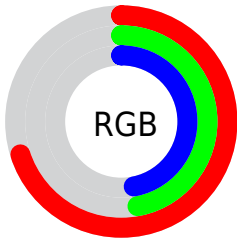
Format	Color
R_{YB}	178, 121, 121
Decimal	11696505
CIE _{Lab}	56.60, 22.29, 9.06
CIE _{LCh}	57, 24.060, 22.115
Yxy	24.5202, 0.3846, 0.3292
Android (android.graphics.Color)	4289886585 (0xFFB27979)
YUV	138.0430, -8.4022, 35.0423
Hunter-Lab	49.5179, 16.6154, 9.1446

Details

The XYZ color **28.6487, 24.5202, 21.3121** is a dark color, and the websafe version is hex **996666**. A complement of this color would be **31.8410, 39.1189, 47.9922**, and the grayscale version is **24.1964, 25.4565, 27.7221**.

A 20% lighter version of the original color is **56.9398, 50.9514, 46.3687**, and **11.8321, 9.4009, 7.4943** is the 20% darker color. If you saturate the color by 10%, you get **25.6892, 20.1898, 15.4280**, and if you desaturate by 10%, it is **32.2100, 29.7317, 28.3911**.

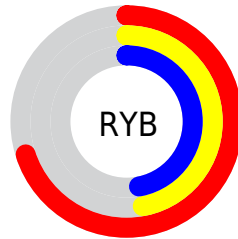
Distribution



Red (70%)

Green (47%)

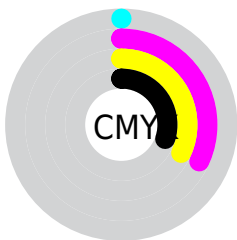
Blue (47%)



Red (70%)

Yellow (47%)

Blue (47%)

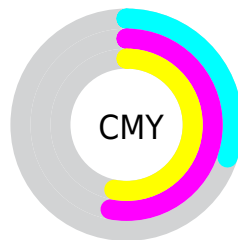


Cyan (0%)

Magenta (32%)

Yellow (32%)

Black (30%)



Cyan (30%)

Magenta (53%)

Yellow (53%)

Brightness & Saturation Gradients

These gradients show how the XYZ color 28.6487, 24.5202, 21.3121 changes by changing the brightness by 10 percent. The first figure shows a shift by +10% for each color and the second figure -10%.

Similar to the brightness gradients but the following saturation gradients show a change of the XYZ color 28.6487, 24.5202, 21.3121 by changing the saturation by 10% instead.

■ 28.6487, 24.5202,
21.3121

■ 28.6487, 24.5202,
21.3121

287.5780,
275.4400, 271.7678

■ 18.9582, 15.7200,
13.1589

■ 56.9199, 50.8778,
46.4939

■ 11.7439, 9.3262,
7.4060

■ 76.2313, 69.2039,
64.3595

■ 6.6405, 4.9546,
3.6350

■ 99.4803, 91.4741,
86.2997

■ 3.2826, 2.2206,
1.4273

127.0324,
118.0727, 112.7330

■ 1.3049, 0.7312,
0.1629

159.2529,
149.3843, 144.0779

■ 0.1869, 0.0000,
0.0000

196.5070,

■ 0.0000, 0.0000,

185.7931, 180.7530

0.0000

239.1603,
227.6835, 223.1768

■ 28.6487, 24.5202,
21.3121

■ 28.6487, 24.5202,
21.3121

■ 25.6892, 20.1898,
15.4280

■ 32.2100, 29.7317,
28.3911

■ 23.2965, 16.6885,
10.6714

■ 36.4018, 35.8653,
36.7241

■ 21.4349, 13.9645,
6.9709

■ 41.2530, 42.9641,
46.3683


■ 20.0641, 11.9585,
4.2459

■ 46.7905, 51.0670,
57.3769


■ 19.1377, 10.6029,
2.4044


■ 53.0396, 60.2110,
69.7999

 18.6007, 9.8171,
1.3372

 60.0241, 70.4312,
83.6851

 18.3603, 9.4653,
0.8593

 67.7669, 81.7610,
99.0780

 72.1702, 88.2050,
107.8292

Harmonies

Analogous

The Analogous color harmony consists of three colors that are next to each other on the color wheel.



29.0460, 24.5202, 28.8665



28.6487, 24.5202, 21.3121



26.7649, 24.5202, 16.2982

Triad

The Triadic color harmony groups three colors that are evenly spaced from another and form a triangle on the color wheel.



28.6487, 24.5202, 21.3121



19.3155, 24.5202, 18.3167



22.5760, 24.5202, 45.0347

Complementary

The Complementary color scheme is a pair of colors which are on the opposite of each other on the color wheel.



28.6487, 24.5202, 21.3121



31.8410, 39.1189, 47.9922

Split Complementary

Split-complementary colors differ from the complementary color scheme. The scheme consists of three colors, the original color and two neighbors of the complement color.



20.1582, 24.5202, 40.7846



28.6487, 24.5202, 21.3121



18.3764, 24.5202, 24.6416

Square

The Square scheme is like the rectangle color scheme, but the four colors are evenly spaced on the color wheel.



28.6487, 24.5202, 21.3121



21.3401, 24.5202, 14.8252



18.6721, 24.5202, 32.9232



25.3885, 24.5202, 43.6506

Rectangle

The Rectangle color scheme consists of four colors that form a rectangle on the color wheel.



28.6487, 24.5202, 21.3121



24.9958, 24.5202, 14.5642



18.6721, 24.5202, 32.9232



21.6936, 24.5202, 44.1921

Sweetspot

The Sweet Spot groups the original color and five complimentary colors.



28.6494, 24.5214, 21.3126



67.5472, 67.2856, 69.6483



33.2336, 26.3544, 45.4550



14.7086, 14.5318, 14.9207



86.6293, 91.1408, 99.2523



17.0014, 17.8868, 19.4787

Same Dimension

The Same Dimension uses a secret algorithm to generate beautiful new colors.



28.6494, 24.5214, 21.3126



48.2737, 39.0830, 31.3334



32.6383, 32.4992, 22.6422



8.4964, 8.5054, 8.8464



13.1370, 6.7725, 0.6148



0.4134, 0.2131, 0.0193

Inverse Universe

The Inverse Universe completely reimagines the original color for something new.



31.8410, 39.1189, 47.9922



54.9208, 69.4850, 86.8985



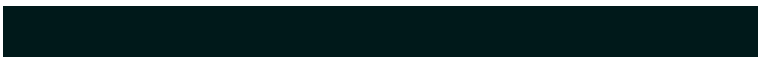
26.7480, 28.9330, 46.2945



8.7426, 9.6315, 10.9046



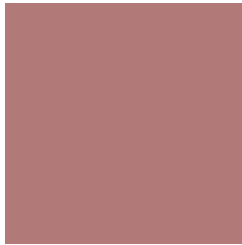
17.1394, 25.0792, 34.0744



0.5393, 0.7891, 1.0721

Previews

White Background



This preview shows how the XYZ color 28.6487, 24.5202, 21.3121 looks on a white background.

Color Contrast Check

Large Text (above 18pt) WCAG AA ✓ Pass

Any Text WCAG AA × Fail

Large Text (above 18pt) WCAG AAA × Fail

Any Text WCAG AAA × Fail

Black Background



This preview shows how the XYZ color 28.6487, 24.5202, 21.3121 looks on a black background.

Color Contrast Check

Large Text (above 18pt) WCAG AA ✓ Pass

Any Text WCAG AA ✓ Pass

Large Text (above 18pt) WCAG AAA ✓ Pass

Any Text WCAG AAA × Fail

If you want to check with other color combinations, try the [Color Contrast Checker](#).

XYZ 28.6487, 24.5202, 21.3121

Background



This preview shows how black text looks on a background with the XYZ color 28.6487, 24.5202, 21.3121.



This preview shows how white text looks on a background with the XYZ color 28.6487, 24.5202,

Color Blindness Simulation

Color vision deficiency is a very complex topic, and I could not describe the different causes any better than Wikipedia does, so if you want to learn more, you should check out their [article about color blindness](#).

Dichromacy



Original Color

28.6487, 24.5202, 21.3121

Protanopia

23.5818, 24.7687, 24.3068

Deuteranopia

24.9636, 24.5331, 20.8724



Tritanopia

29.2693, 24.6016, 23.9748

Trichromacy



Original Color

28.6487, 24.5202, 21.3121

Protanomaly

25.2086, 24.6090, 23.1600

Deuteranomaly

26.0838, 24.3213, 21.0890

Tritanomaly

29.0728, 24.5230, 22.9398

Monochromacy



Original Color

28.6487, 24.5202, 21.3121

Achromatopsia

24.1572, 25.4152, 27.6772

Achromatomaly

25.5530, 24.9408, 25.2971

CSS Examples

Text

The CSS property to change the color of the text to XYZ 28.6487, 24.5202, 21.3121 is called "color". The color property can be set on classes, ids or directly on the HTML element.

This example shows how text in the color `rgb(178, 121, 121)` looks like.

```
.text, #text, p{  
    color:rgb(178, 121, 121)  
}
```

If you want to add a text shadow in that color use the text-shadow property, you can generate a text shadow directly with our [CSS Text Shadow Generator](#).

Here you see how black text with a 4 pixel rgb(178, 121, 121) colored shadow looks like.

```
.shadow{ text-shadow: 4px 4px 2px rgb(178, 121, 121) }
```

Border

The CSS property to change the border of an element to XYZ 28.6487, 24.5202, 21.3121 is called "border". The border property can be set on classes, ids or directly on the HTML element.

This example shows the color as border, it can be applied via the CSS property "border" or "border-color".

```
.border, #border, table{ border:4px solid rgb(178, 121, 121) }
```


If only the border color should be changed use the property `border-color`.

```
.border{ border-color:rgb(178, 121, 121) }
```

If you want to add a box shadow in that color use:

Here you see how a box with a 4 pixel `rgb(178, 121, 121)` colored shadow looks like.

```
.boxshadow{ -moz-box-shadow:4px 4px 4px  
4px rgb(178, 121, 121); -webkit-box-  
shadow:4px 4px 4px 4px rgb(178, 121, 121);  
box-shadow:4px 4px 4px 4px rgb(178, 121,  
121) }
```

Background

The CSS property to change the background color of an element to XYZ 28.6487, 24.5202, 21.3121 is called "background". The background property can be set on classes, ids or directly on the HTML element.

```
.background, #background, body{  
background: rgb(178, 121, 121) }
```

If only the background color should be changed can be used:

```
.background{ background-color: rgb(178,  
121, 121) }
```

This example shows the color as background, it is applied via the CSS property "background".

To optimize and compress your CSS code, you can use our [online CSS compressor and optimizer](#) based on csstidy. If you want to create a linear or radial gradient as background or border, check our [CSS Gradient Generator](#).

Hey! You found this booklet interesting? Support Converting Colors with the new Membership Option!

The pro membership hides all ads, plus gives you double the colors in the color bucket, and more awesome pro features!

[Learn more, Memberships starting at \\$2.50/m!](#)

**Follow me
on Twitter!**

@ConvertingColor