

# Converting Colors

XYZ(28.8744, 28.7105, 19.6476)

Have a look what the booklet for  
XYZ(28.8744, 28.7105, 19.6476)  
contains.

<b>XYZ(28.8677, 28.6770, 19.6365)</b> .....	3
<b><i>Conversions</i></b> .....	4
<b><i>Details</i></b> .....	6
<b><i>Harmonies</i></b> .....	12
<b><i>Previews</i></b> .....	24
<b><i>Color Blindness Simulation</i></b> .....	28
<b><i>CSS Examples</i></b> .....	31

# Color

**XYZ(28.8677, 28.6770,  
19.6365)**

# Conversions

## Conversions Part 1

<b>Format</b>	<b>Color</b>
Hex	A98D71
RGB	169, 141, 113
RGB Percent	66%, 55%, 44%
CMY	0.3373, 0.4470, 0.5569
CMYK	0.00, 0.17, 0.33, 0.34
HSL	30°, 25%, 55%
HSV	30°, 33%, 66%
XYZ	28.8677, 28.6770, 19.6365
YIQ	146.1800, 25.6760, -2.7720

# Conversions

## Conversions Part 2

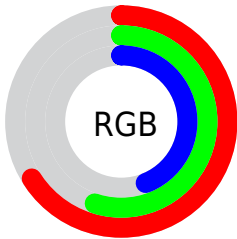
<b>Format</b>	<b>Color</b>
<b>R<sub>YB</sub></b>	169, 169, 113
Decimal	11111793
CIE <sub>Lab</sub>	60.50, 6.37, 18.89
CIE <sub>LCh</sub>	60, 19.938, 71.361
Yxy	28.6770, 0.3740, 0.3716
Android (android.graphics.Color)	4289301873 (0xFFA98D71)
YUV	146.1800, -16.3577, 20.0131
Hunter-Lab	53.5509, 2.5099, 15.7447

# Details

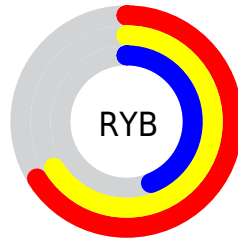
The XYZ color **28.8677, 28.6770, 19.6365** is a dark color, and the websafe version is hex **999966**. A complement of this color would be **23.4961, 25.4243, 41.2052**, and the grayscale version is **27.4537, 28.8834, 31.4540**.

A 20% lighter version of the original color is **57.3580, 57.7544, 43.7219**, and **11.8977, 11.5768, 6.6085** is the 20% darker color. If you saturate the color by 10%, you get **26.8050, 25.9350, 14.6840**, and if you desaturate by 10%, it is **31.2042, 31.6827, 25.5551**.

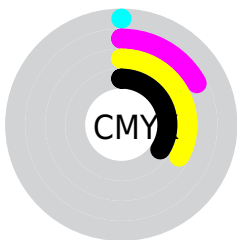
# Distribution



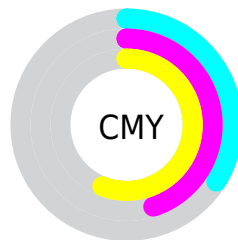
- Red (66%)
- Green (55%)
- Blue (44%)



- Red (66%)
- Yellow (66%)
- Blue (44%)



- Cyan (0%)
- Magenta (17%)
- Yellow (33%)
- Black (34%)



- Cyan (34%)
- Magenta (45%)
- Yellow (56%)

# Brightness & Saturation Gradients

These gradients show how the XYZ color 28.8677, 28.6770, 19.6365 changes by changing the brightness by 10 percent. The first figure shows a shift by +10% for each color and the second figure -10%.

Similar to the brightness gradients but the following saturation gradients show a change of the XYZ color 28.8677, 28.6770, 19.6365 by changing the saturation by 10% instead.



■ 28.8677, 28.6770,  
19.6365

■ 28.8677, 28.6770,  
19.6365

288.5957,  
295.6879, 262.4792

■ 19.1245, 18.8366,  
11.9496

■ 57.2658, 57.5635,  
43.6578

■ 11.8648, 11.5523,  
6.5873

■ 76.6515, 77.3784,  
60.8294

■ 6.7233, 6.4396,  
3.1308

■ 99.9821, 101.2870,  
81.9996

■ 3.3344, 3.1142,  
1.1618

■ 127.6229,  
129.6735, 107.5870

■ 1.3330, 1.1916,  
0.0000

159.9393,  
162.9225, 138.0101

■ 0.2077, 0.0549,  
0.0000

197.2967,

■ 0.0000, 0.0000,

201.4183, 173.6875

0.0000

240.0604,  
245.5453, 215.0377

■ 28.8677, 28.6770,  
19.6365

■ 28.8677, 28.6770,  
19.6365

■ 26.8050, 25.9350,  
14.6840

■ 31.2042, 31.6827,  
25.5551

■ 25.0018, 23.4445,  
10.6431

■ 33.8233, 34.9557,  
32.4865

■ 23.4460, 21.1981,  
7.4568

■ 36.7362, 38.5048,  
40.4767

■ 22.1231, 19.1865,  
5.0607

■ 39.9529, 42.3370,  
49.5680

■ 21.0170, 17.3995,  
3.3810

■ 43.4827, 46.4590,  
59.8007

■ 20.1086, 15.8255,  
2.3299

■ 47.3345, 50.8774,  
71.2129

■ 19.5723, 14.8553,  
1.8358

■ 51.5169, 55.5982,  
83.8410

■ 56.0382, 60.6277,  
97.7196

■ 59.2366, 65.3038,  
104.0905

# Harmonies

## Analogous

The Analogous color harmony consists of three colors that are next to each other on the color wheel.



31.1388, 28.6770, 22.7705



28.8677, 28.6770, 19.6365



26.2942, 28.6770, 19.2969

# Triad

The Triadic color harmony groups three colors that are evenly spaced from another and form a triangle on the color wheel.



28.8677, 28.6770, 19.6365



22.6906, 28.6770, 34.0978



30.6563, 28.6770, 43.1047

# Complementary

The Complementary color scheme is a pair of colors which are on the opposite of each other on the color wheel.



28.8677, 28.6770, 19.6365



23.4961, 25.4243, 41.2052

# Split Complementary

Split-complementary colors differ from the complementary color scheme. The scheme consists of three colors, the original color and two neighbors of the complement color.



28.2423, 28.6770, 47.2672



28.8677, 28.6770, 19.6365



23.7113, 28.6770, 41.5478

# Square

The Square scheme is like the rectangle color scheme, but the four colors are evenly spaced on the color wheel.



28.8677, 28.6770, 19.6365



22.8347, 28.6770, 26.9136



25.7066, 28.6770, 46.6564



32.2155, 28.6770, 35.9725



# Rectangle

The Rectangle color scheme consists of four colors that form a rectangle on the color wheel.



28.8677, 28.6770, 19.6365



24.7635, 28.6770, 20.6260



25.7066, 28.6770, 46.6564



29.9117, 28.6770, 44.9446

# Sweetspot

The Sweet Spot groups the original color and five complimentary colors.



28.8684, 28.6783, 19.6371



62.0622, 64.4308, 62.2112



27.0753, 22.1687, 28.0515



13.3784, 13.8610, 13.1558



80.6108, 84.8088, 92.3568



14.7206, 15.4872, 16.8656



# Same Dimension

The Same Dimension uses a secret algorithm to generate beautiful new colors.



28.8684, 28.6783, 19.6371



48.8568, 47.5948, 28.2911



33.5309, 38.0033, 21.1913



7.8294, 8.1389, 7.9476



14.6407, 11.1787, 1.3861



0.4074, 0.3744, 0.0508



# Inverse Universe

The Inverse Universe completely reimagines the original color for something new.



23.4961, 25.4243, 41.2052



37.6906, 40.8314, 73.1198



19.8769, 18.1859, 39.9988



7.4300, 7.8969, 9.5510



7.7822, 7.0246, 28.9212

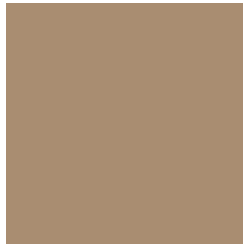


0.2406, 0.2733, 0.7207



# Previews

## White Background



This preview shows how the XYZ color 28.8677, 28.6770, 19.6365 looks on a white background.

## Color Contrast Check

Large Text (above 18pt) WCAG AA ✓ Pass

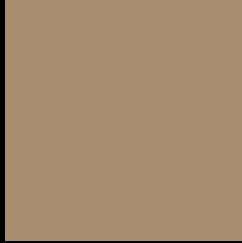
Any Text WCAG AA × Fail

Large Text (above 18pt) WCAG AAA × Fail

Any Text WCAG AAA × Fail



# Black Background



This preview shows how the XYZ color 28.8677, 28.6770, 19.6365 looks on a black background.

## Color Contrast Check

Large Text (above 18pt) WCAG AA ✓ Pass

Any Text WCAG AA ✓ Pass

Large Text (above 18pt) WCAG AAA ✓ Pass

Any Text WCAG AAA × Fail

If you want to check with other color combinations, try the [Color Contrast Checker](#).

**XYZ 28.8677, 28.6770, 19.6365**

## **Background**



This preview shows how black text looks on a background with the XYZ color 28.8677, 28.6770, 19.6365.



This preview shows how white text looks on a background with the XYZ color 28.8677, 28.6770,



# Color Blindness Simulation

Color vision deficiency is a very complex topic, and I could not describe the different causes any better than Wikipedia does, so if you want to learn more, you should check out their [article about color blindness](#).

## Dichromacy



### Original Color

28.8677, 28.6770, 19.6365

### Protanopia

26.8910, 28.7641, 20.3544

### Deuteranopia

29.1533, 28.6063, 19.6078



## Tritanopia

31.3042, 28.5991, 31.4740

# Trichromacy



## Original Color

28.8677, 28.6770, 19.6365

## Protanomaly

27.5077, 28.6350, 19.9969

## Deuteranomaly

28.9363, 28.4945, 19.5977

## Tritanomaly

30.4749, 28.6969, 26.8545

# Monochromacy



## Original Color

28.8677, 28.6770, 19.6365

## Achromatopsia

27.3213, 28.7441, 31.3023

## Achromatomaly

27.6028, 28.5378, 26.6078

# CSS Examples

## Text

The CSS property to change the color of the text to XYZ 28.8677, 28.6770, 19.6365 is called "color". The color property can be set on classes, ids or directly on the HTML element.

This example shows how text in the color `rgb(169, 141, 113)` looks like.

```
.text, #text, p{  
    color:rgb(169, 141, 113)  
}
```

If you want to add a text shadow in that color use the text-shadow property, you can generate a text shadow directly with our [CSS Text Shadow Generator](#).

Here you see how black text with a 4 pixel rgb(169, 141, 113) colored shadow looks like.

```
.shadow{ text-shadow: 4px 4px 2px rgb(169, 141, 113) }
```

## Border

The CSS property to change the border of an element to XYZ 28.8677, 28.6770, 19.6365 is called "border". The border property can be set on classes, ids or directly on the HTML element.

This example shows the color as border, it can be applied via the CSS property "border" or "border-color".

```
.border, #border, table{ border:4px solid rgb(169, 141, 113) }
```



If only the border color should be changed use the property `border-color`.

```
.border{ border-color:rgb(169, 141, 113) }
```

If you want to add a box shadow in that color use:

Here you see how a box with a 4 pixel `rgb(169, 141, 113)` colored shadow looks like.

```
.boxshadow{ -moz-box-shadow:4px 4px 4px  
4px rgb(169, 141, 113); -webkit-box-  
shadow:4px 4px 4px 4px rgb(169, 141, 113);  
box-shadow:4px 4px 4px 4px rgb(169, 141,  
113) }
```

# Background

The CSS property to change the background color of an element to XYZ 28.8677, 28.6770, 19.6365 is called "background". The background property can be set on classes, ids or directly on the HTML element.

```
.background, #background, body{  
background: rgb(169, 141, 113) }
```

If only the background color should be changed can be used:

```
.background{ background-color: rgb(169,  
141, 113) }
```

This example shows the color as background, it is applied via the CSS property "background".

To optimize and compress your CSS code, you can use our [online CSS compressor and optimizer](#) based on csstidy. If you want to create a linear or radial gradient as background or border, check our [CSS Gradient Generator](#).

Hey! You found this booklet interesting? Support Converting Colors with the new Membership Option!

The pro membership hides all ads, plus gives you double the colors in the color bucket, and more awesome pro features!

**[Learn more, Memberships starting at \\$2.50/m!](#)**

**Follow me  
on Twitter!**

@ConvertingColor