

Converting Colors

XYZ(28.9465, 27.1842, 22.2642)

Have a look what the booklet for
XYZ(28.9465, 27.1842, 22.2642)
contains.

XYZ(28.8325, 27.1133, 22.1261)	3
<i>Conversions</i>	4
<i>Details</i>	6
<i>Harmonies</i>	12
<i>Previews</i>	24
<i>Color Blindness Simulation</i>	28
<i>CSS Examples</i>	31

Color

**XYZ(28.8325, 27.1133,
22.1261)**

Conversions

Conversions Part 1

Format	Color
Hex	AB867A
RGB	171, 134, 122
RGB Percent	67%, 53%, 48%
CMY	0.3294, 0.4745, 0.5216
CMYK	0.00, 0.22, 0.29, 0.33
HSL	15°, 23%, 57%
HSV	15°, 29%, 67%
XYZ	28.8325, 27.1133, 22.1261
YIQ	143.6950, 25.9040, 4.1120

Conversions

Conversions Part 2

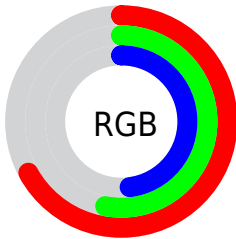
Format	Color
R _Y B	171, 138, 122
Decimal	11241082
CIE Lab	59.08, 12.34, 11.86
CIE LCh	59, 17.119, 43.870
Yxy	27.1133, 0.3693, 0.3473
Android (android.graphics.Color)	4289431162 (0xFFAB867A)
YUV	143.6950, -10.6956, 23.9465
Hunter-Lab	52.0704, 7.7160, 11.2554

Details

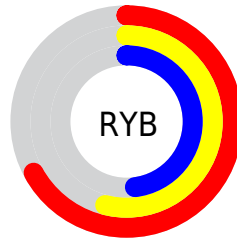
The XYZ color **28.8325, 27.1133, 22.1261** is a dark color, and the websafe version is hex **CC9999**. A complement of this color would be **27.7744, 31.8729, 43.2162**, and the grayscale version is **26.4215, 27.7975, 30.2715**.

A 20% lighter version of the original color is **57.0889, 54.9275, 47.6376**, and **11.8441, 10.6732, 7.7392** is the 20% darker color. If you saturate the color by 10%, you get **26.1881, 23.3733, 16.4692**, and if you desaturate by 10%, it is **31.8827, 31.3661, 28.8387**.

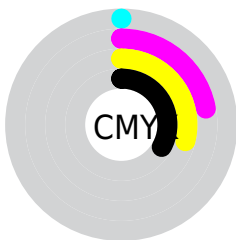
Distribution



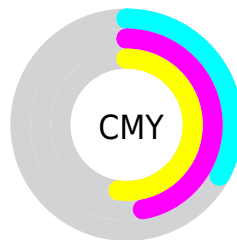
- Red (67%)
- Green (53%)
- Blue (48%)



- Red (67%)
- Yellow (54%)
- Blue (48%)



- Cyan (0%)
- Magenta (22%)
- Yellow (29%)
- Black (33%)



- Cyan (33%)
- Magenta (47%)
- Yellow (52%)

Brightness & Saturation Gradients

These gradients show how the XYZ color 28.8325, 27.1133, 22.1261 changes by changing the brightness by 10 percent. The first figure shows a shift by +10% for each color and the second figure -10%.

Similar to the brightness gradients but the following saturation gradients show a change of the XYZ color 28.8325, 27.1133, 22.1261 by changing the saturation by 10% instead.

■ 28.8325, 27.1133,
22.1261

■ 28.8325, 27.1133,
22.1261

288.4323,
288.2053, 276.1791

■ 19.0978, 17.6583,
13.7504

■ 57.2103, 55.0656,
47.8592

■ 11.8454, 10.7050,
7.8105

■ 76.5840, 74.3318,
66.0536

■ 6.7099, 5.8688,
3.8879

■ 99.9015, 97.6371,
88.3581

■ 3.3261, 2.7655,
1.5640

127.5281,
125.3660, 115.1910

■ 1.3285, 1.0106,
0.2650

159.8291,
157.9029, 146.9711

■ 0.2044, 0.0000,
0.0000

197.1699,

■ 0.0000, 0.0000,

195.6321, 184.1167

0.0000

239.9158,
238.9381, 227.0466

■ 28.8325, 27.1133,
22.1261

■ 28.8325, 27.1133,
22.1261

■ 26.1881, 23.3733,
16.4692

■ 31.8827, 31.3661,
28.8387

■ 23.9297, 20.1229,
11.8123

■ 35.3531, 36.1465,
36.6555

■ 22.0391, 17.3425,
8.0969

■ 39.2598, 41.4732,
45.6240

■ 20.4957, 15.0097,
5.2580

■ 43.6176, 47.3629,
55.7884

■ 19.2766, 13.1002,
3.2221

■ 48.4405, 53.8317,
67.1906

■ 18.3560, 11.5872,
1.9033

■ 53.7420, 60.8948,
79.8705

■ 17.6941, 10.4368,
1.1480

■ 59.5348, 68.5670,
93.8661

■ 17.6187, 10.3061,
1.0607

■ 65.2133, 76.6154,
105.9589

■ 69.0932, 84.3751,
107.2522

Harmonies

Analogous

The Analogous color harmony consists of three colors that are next to each other on the color wheel.



29.9481, 27.1133, 26.8022



28.8325, 27.1133, 22.1261



26.9233, 27.1133, 19.6394

Triad

The Triadic color harmony groups three colors that are evenly spaced from another and form a triangle on the color wheel.



28.8325, 27.1133, 22.1261



22.0380, 27.1133, 26.3859



26.7632, 27.1133, 42.4149

Complementary

The Complementary color scheme is a pair of colors which are on the opposite of each other on the color wheel.



28.8325, 27.1133, 22.1261



27.7744, 31.8729, 43.2162

Split Complementary

Split-complementary colors differ from the complementary color scheme. The scheme consists of three colors, the original color and two neighbors of the complement color.



24.6508, 27.1133, 42.2628



28.8325, 27.1133, 22.1261



22.0004, 27.1133, 32.4193

Square

The Square scheme is like the rectangle color scheme, but the four colors are evenly spaced on the color wheel.



28.8325, 27.1133, 22.1261



23.0388, 27.1133, 21.8576



22.9331, 27.1133, 38.4052



28.7097, 27.1133, 38.7959

Rectangle

The Rectangle color scheme consists of four colors that form a rectangle on the color wheel.



28.8325, 27.1133, 22.1261



25.4954, 27.1133, 19.3102



22.9331, 27.1133, 38.4052



26.0474, 27.1133, 42.8170

Sweetspot

The Sweet Spot groups the original color and five complimentary colors.



28.8332, 27.1146, 22.1267



62.9835, 64.2813, 64.8928



30.0615, 25.1002, 36.3198



13.8394, 14.0522, 14.0035



82.5889, 86.8899, 94.6231



15.4596, 16.2647, 17.7123

Same Dimension

The Same Dimension uses a secret algorithm to generate beautiful new colors.



28.8332, 27.1146, 22.1267



48.7364, 44.4683, 33.3807



32.5230, 34.4941, 23.3566



8.1587, 8.3222, 8.3897



13.3178, 7.8410, 0.8115



0.4132, 0.3036, 0.0368

Inverse Universe

The Inverse Universe completely reimagines the original color for something new.



27.7744, 31.8729, 43.2162



46.5376, 54.3031, 77.0306



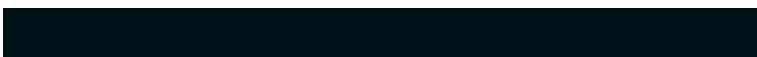
24.0502, 24.4247, 41.9749



8.0676, 8.7346, 10.2134



11.5129, 14.1596, 31.1708



0.3597, 0.4728, 0.8803

Previews

White Background



This preview shows how the XYZ color 28.8325, 27.1133, 22.1261 looks on a white background.

Color Contrast Check

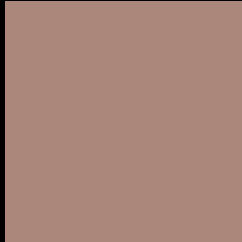
Large Text (above 18pt) WCAG AA ✓ Pass

Any Text WCAG AA × Fail

Large Text (above 18pt) WCAG AAA × Fail

Any Text WCAG AAA × Fail

Black Background



This preview shows how the XYZ color 28.8325, 27.1133, 22.1261 looks on a black background.

Color Contrast Check

Large Text (above 18pt) WCAG AA ✓ Pass

Any Text WCAG AA ✓ Pass

Large Text (above 18pt) WCAG AAA ✓ Pass

Any Text WCAG AAA × Fail

If you want to check with other color combinations, try the [Color Contrast Checker](#).

XYZ 28.8325, 27.1133, 22.1261

Background



This preview shows how black text looks on a background with the XYZ color 28.8325, 27.1133, 22.1261.



This preview shows how white text looks on a background with the XYZ color 28.8325, 27.1133,

Color Blindness Simulation

Color vision deficiency is a very complex topic, and I could not describe the different causes any better than Wikipedia does, so if you want to learn more, you should check out their [article about color blindness](#).

Dichromacy



Original Color

28.8325, 27.1133, 22.1261

Protanopia

25.8333, 27.2419, 23.6353

Deuteranopia

27.7067, 27.1643, 21.8721



Tritanopia

30.1576, 27.0399, 28.8291

Trichromacy



Original Color

28.8325, 27.1133, 22.1261

Protanomaly

26.8389, 27.1140, 23.2210

Deuteranomaly

28.1917, 27.2043, 21.8542

Tritanomaly

29.5676, 26.9944, 26.2063

Monochromacy



Original Color

28.8325, 27.1133, 22.1261

Achromatopsia

26.5089, 27.8894, 30.3716

Achromatomaly

27.1484, 27.4038, 27.1511

CSS Examples

Text

The CSS property to change the color of the text to XYZ 28.8325, 27.1133, 22.1261 is called "color". The color property can be set on classes, ids or directly on the HTML element.

This example shows how text in the color `rgb(171, 134, 122)` looks like.

```
.text, #text, p{  
    color:rgb(171, 134, 122)  
}
```

If you want to add a text shadow in that color use the text-shadow property, you can generate a text shadow directly with our [CSS Text Shadow Generator](#).

Here you see how black text with a 4 pixel rgb(171, 134, 122) colored shadow looks like.

```
.shadow{ text-shadow: 4px 4px 2px rgb(171, 134, 122) }
```

Border

The CSS property to change the border of an element to XYZ 28.8325, 27.1133, 22.1261 is called "border". The border property can be set on classes, ids or directly on the HTML element.

This example shows the color as border, it can be applied via the CSS property "border" or "border-color".

```
.border, #border, table{ border:4px solid rgb(171, 134, 122) }
```


If only the border color should be changed use the property `border-color`.

```
.border{ border-color:rgb(171, 134, 122) }
```

If you want to add a box shadow in that color use:

Here you see how a box with a 4 pixel `rgb(171, 134, 122)` colored shadow looks like.

```
.boxshadow{ -moz-box-shadow:4px 4px 4px  
4px rgb(171, 134, 122); -webkit-box-  
shadow:4px 4px 4px 4px rgb(171, 134, 122);  
box-shadow:4px 4px 4px 4px rgb(171, 134,  
122) }
```

Background

The CSS property to change the background color of an element to XYZ 28.8325, 27.1133, 22.1261 is called "background". The background property can be set on classes, ids or directly on the HTML element.

```
.background, #background, body{  
background: rgb(171, 134, 122) }
```

If only the background color should be changed can be used:

```
.background{ background-color: rgb(171,  
134, 122) }
```

This example shows the color as background, it is applied via the CSS property "background".

To optimize and compress your CSS code, you can use our [online CSS compressor and optimizer](#) based on csstidy. If you want to create a linear or radial gradient as background or border, check our [CSS Gradient Generator](#).

Hey! You found this booklet interesting? Support Converting Colors with the new Membership Option!

The pro membership hides all ads, plus gives you double the colors in the color bucket, and more awesome pro features!

[Learn more, Memberships starting at \\$2.50/m!](#)

**Follow me
on Twitter!**

@ConvertingColor