

# Converting Colors

XYZ(29.0502, 28.5400, 20.1973)

Have a look what the booklet for  
XYZ(29.0502, 28.5400, 20.1973)  
contains.

<b>XYZ(29.0502, 28.5400, 20.1973)</b> .....	3
<b><i>Conversions</i></b> .....	4
<b><i>Details</i></b> .....	6
<b><i>Harmonies</i></b> .....	12
<b><i>Previews</i></b> .....	24
<b><i>Color Blindness Simulation</i></b> .....	28
<b><i>CSS Examples</i></b> .....	31

# Color

**XYZ(29.0502, 28.5400,  
20.1973)**

# Conversions

## Conversions Part 1

<b>Format</b>	<b>Color</b>
Hex	AA8C73
RGB	170, 140, 115
RGB Percent	67%, 55%, 45%
CMY	0.3333, 0.4510, 0.5490
CMYK	0.00, 0.18, 0.32, 0.33
HSL	27°, 24%, 56%
HSV	27°, 32%, 67%
XYZ	29.0502, 28.5400, 20.1973
YIQ	146.1200, 25.9050, -1.4150

# Conversions

## Conversions Part 2

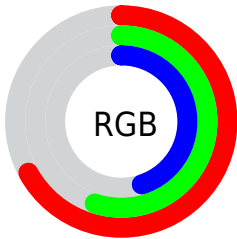
<b>Format</b>	<b>Color</b>
<b>R<sub>YB</sub></b>	170, 161, 115
Decimal	11177075
CIE <sub>Lab</sub>	60.37, 7.61, 17.62
CIE <sub>LCh</sub>	60, 19.188, 66.650
Yxy	28.5400, 0.3735, 0.3669
Android (android.graphics.Color)	4289367155 (0xFFAA8C73)
YUV	146.1200, -15.3422, 20.9428
Hunter-Lab	53.4228, 3.5745, 14.9805

# Details

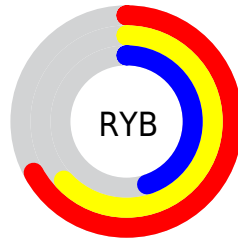
The XYZ color **29.0502, 28.5400, 20.1973** is a dark color, and the websafe version is hex **CC9999**. A complement of this color would be **24.4511, 26.7972, 41.9141**, and the grayscale version is **27.4249, 28.8532, 31.4211**.

A 20% lighter version of the original color is **57.6309, 57.5423, 44.6285**, and **12.0054, 11.4995, 6.8971** is the 20% darker color. If you saturate the color by 10%, you get **26.8627, 25.5888, 15.0789**, and if you desaturate by 10%, it is **31.5338, 31.7944, 26.3052**.

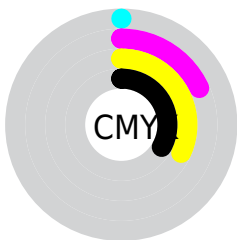
# Distribution



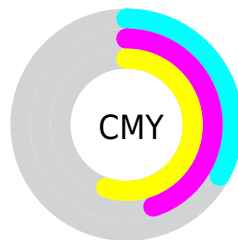
- Red (67%)
- Green (55%)
- Blue (45%)



- Red (67%)
- Yellow (63%)
- Blue (45%)



- Cyan (0%)
- Magenta (18%)
- Yellow (32%)
- Black (33%)



- Cyan (33%)
- Magenta (45%)
- Yellow (55%)

# Brightness & Saturation Gradients

These gradients show how the XYZ color 29.0502, 28.5400, 20.1973 changes by changing the brightness by 10 percent. The first figure shows a shift by +10% for each color and the second figure -10%.

Similar to the brightness gradients but the following saturation gradients show a change of the XYZ color 29.0502, 28.5400, 20.1973 by changing the saturation by 10% instead.



■ 29.0502, 28.5400,  
20.1973

■ 29.0502, 28.5400,  
20.1973

289.4417,  
295.0383, 265.6207

■ 19.2633, 18.7331,  
12.3530

■ 57.5538, 57.3454,  
44.6110

■ 11.9658, 11.4776,  
6.8591

■ 77.0013, 77.1128,  
62.0176

■ 6.7924, 6.3890,  
3.2971

■ 100.3996,  
100.9690, 83.4487

■ 3.3778, 3.0831,  
1.2482

128.1141,  
129.2986, 109.3228

■ 1.3566, 1.1752,  
0.0188

160.5102,  
162.4860, 140.0585

■ 0.2250, 0.0413,  
0.0000

197.9533,

■ 0.0000, 0.0000,

200.9154, 176.0744

0.0000

240.8087,  
244.9714, 217.7889

■ 29.0502, 28.5400,  
20.1973

■ 29.0502, 28.5400,  
20.1973

■ 26.8627, 25.5888,  
15.0789

■ 31.5338, 31.7944,  
26.3052

■ 24.9564, 22.9272,  
10.8948

■ 34.3231, 35.3570,  
33.4499

■ 23.3182, 20.5464,  
7.5875

■ 37.4300, 39.2379,  
41.6779

■ 21.9328, 18.4354,  
5.0918

■ 40.8652, 43.4453,  
51.0324

■ 20.7833, 16.5824,  
3.3337

■ 44.6386, 47.9872,  
61.5542

■ 19.8497, 14.9740,  
2.2249

■ 48.7598, 52.8711,  
73.2818

■ 19.2514, 13.8936,  
1.6671

■ 53.2380, 58.1045,  
86.2524

■ 58.0821, 63.6945,  
100.5011

■ 61.1356, 68.7820,  
104.6618

# Harmonies

## Analogous

The Analogous color harmony consists of three colors that are next to each other on the color wheel.



31.1127, 28.5400, 23.6511



29.0502, 28.5400, 20.1973



26.5808, 28.5400, 19.4407

# Triad

The Triadic color harmony groups three colors that are evenly spaced from another and form a triangle on the color wheel.



29.0502, 28.5400, 20.1973



22.6825, 28.5400, 32.6750



30.0575, 28.5400, 43.2980

# Complementary

The Complementary color scheme is a pair of colors which are on the opposite of each other on the color wheel.



29.0502, 28.5400, 20.1973



24.4511, 26.7972, 41.9141

# Split Complementary

Split-complementary colors differ from the complementary color scheme. The scheme consists of three colors, the original color and two neighbors of the complement color.



27.6794, 28.5400, 46.6156



29.0502, 28.5400, 20.1973



23.4960, 28.5400, 39.9100

# Square

The Square scheme is like the rectangle color scheme, but the four colors are evenly spaced on the color wheel.



29.0502, 28.5400, 20.1973



23.0004, 28.5400, 25.9960



25.2895, 28.5400, 45.2902



31.7185, 28.5400, 36.7764



# Rectangle

The Rectangle color scheme consists of four colors that form a rectangle on the color wheel.



29.0502, 28.5400, 20.1973



25.0540, 28.5400, 20.4464



25.2895, 28.5400, 45.2902



29.3101, 28.5400, 44.8666

# Sweetspot

The Sweet Spot groups the original color and five complimentary colors.



29.0509, 28.5413, 20.1979



63.4495, 65.6305, 63.7623



27.8387, 22.8599, 29.8347



13.9841, 14.4277, 13.7861



82.5889, 86.8899, 94.6231



15.4596, 16.2647, 17.7123



# Same Dimension

The Same Dimension uses a secret algorithm to generate beautiful new colors.



29.0509, 28.5413, 20.1979



49.7388, 47.7929, 29.6466



33.5369, 37.5132, 21.6932



7.8015, 8.0830, 7.9383



14.2159, 10.3290, 1.2444



0.3974, 0.3543, 0.0474



# Inverse Universe

The Inverse Universe completely reimagines the original color for something new.



24.4511, 26.7972, 41.9141



40.0433, 44.1120, 75.4058



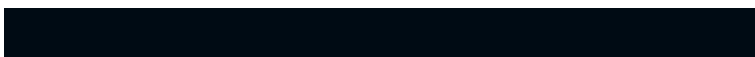
20.7753, 19.4455, 40.6888



7.4581, 7.9531, 9.5604



8.2549, 7.9700, 29.0788

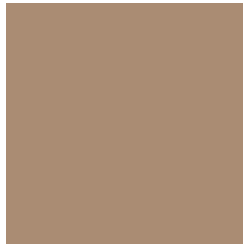


0.2510, 0.2942, 0.7242



# Previews

## White Background



This preview shows how the XYZ color 29.0502, 28.5400, 20.1973 looks on a white background.

## Color Contrast Check

Large Text (above 18pt) WCAG AA ✓ Pass

Any Text WCAG AA × Fail

Large Text (above 18pt) WCAG AAA × Fail

Any Text WCAG AAA × Fail



# Black Background



This preview shows how the XYZ color 29.0502, 28.5400, 20.1973 looks on a black background.

## Color Contrast Check

Large Text (above 18pt) WCAG AA ✓ Pass

Any Text WCAG AA ✓ Pass

Large Text (above 18pt) WCAG AAA ✓ Pass

Any Text WCAG AAA × Fail

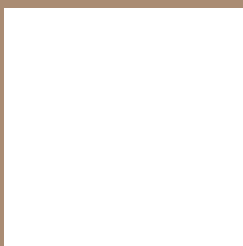
If you want to check with other color combinations, try the [Color Contrast Checker](#).

**XYZ 29.0502, 28.5400, 20.1973**

## **Background**



This preview shows how black text looks on a background with the XYZ color 29.0502, 28.5400, 20.1973.



This preview shows how white text looks on a background with the XYZ color 29.0502, 28.5400,



# Color Blindness Simulation

Color vision deficiency is a very complex topic, and I could not describe the different causes any better than Wikipedia does, so if you want to learn more, you should check out their [article about color blindness](#).

## Dichromacy



### Original Color

29.0502, 28.5400, 20.1973

### Protanopia

26.9130, 28.5274, 21.2274

### Deuteranopia

29.0502, 28.5400, 20.1973



## Tritanopia

31.2260, 28.5679, 31.0625

# Trichromacy



## Original Color

29.0502, 28.5400, 20.1973

## Protanomaly

27.5306, 28.4029, 20.8609

## Deuteranomaly

29.0502, 28.5400, 20.1973

## Tritanomaly

30.3321, 28.4112, 26.8069

# Monochromacy



## Original Color

29.0502, 28.5400, 20.1973

## Achromatopsia

27.3213, 28.7441, 31.3023

## Achromatomaly

27.8640, 28.6643, 26.9859

# CSS Examples

## Text

The CSS property to change the color of the text to XYZ 29.0502, 28.5400, 20.1973 is called "color". The color property can be set on classes, ids or directly on the HTML element.

This example shows how text in the color `rgb(170, 140, 115)` looks like.

```
.text, #text, p{  
    color:rgb(170, 140, 115)  
}
```

If you want to add a text shadow in that color use the text-shadow property, you can generate a text shadow directly with our [CSS Text Shadow Generator](#).

Here you see how black text with a 4 pixel rgb(170, 140, 115) colored shadow looks like.

```
.shadow{ text-shadow: 4px 4px 2px rgb(170, 140, 115) }
```

## Border

The CSS property to change the border of an element to XYZ 29.0502, 28.5400, 20.1973 is called "border". The border property can be set on classes, ids or directly on the HTML element.

This example shows the color as border, it can be applied via the CSS property "border" or "border-color".

```
.border, #border, table{ border:4px solid rgb(170, 140, 115) }
```



If only the border color should be changed use the property `border-color`.

```
.border{ border-color:rgb(170, 140, 115) }
```

If you want to add a box shadow in that color use:

Here you see how a box with a 4 pixel `rgb(170, 140, 115)` colored shadow looks like.

```
.boxshadow{ -moz-box-shadow:4px 4px 4px  
4px rgb(170, 140, 115); -webkit-box-  
shadow:4px 4px 4px 4px rgb(170, 140, 115);  
box-shadow:4px 4px 4px 4px rgb(170, 140,  
115) }
```

# Background

The CSS property to change the background color of an element to XYZ 29.0502, 28.5400, 20.1973 is called "background". The background property can be set on classes, ids or directly on the HTML element.

```
.background, #background, body{  
background: rgb(170, 140, 115) }
```

If only the background color should be changed can be used:

```
.background{ background-color: rgb(170,  
140, 115) }
```

This example shows the color as background, it is applied via the CSS property "background".

To optimize and compress your CSS code, you can use our [online CSS compressor and optimizer](#) based on csstidy. If you want to create a linear or radial gradient as background or border, check our [CSS Gradient Generator](#).

Hey! You found this booklet interesting? Support Converting Colors with the new Membership Option!

The pro membership hides all ads, plus gives you double the colors in the color bucket, and more awesome pro features!

**[Learn more, Memberships starting at \\$2.50/m!](#)**

**Follow me  
on Twitter!**

@ConvertingColor