

Converting Colors

XYZ(29.1439, 26.5481, 24.9619)

Have a look what the booklet for
XYZ(29.1439, 26.5481, 24.9619)
contains.

XYZ(29.2263, 26.6419, 25.0747)	3
<i>Conversions</i>	4
<i>Details</i>	6
<i>Harmonies</i>	12
<i>Previews</i>	24
<i>Color Blindness Simulation</i>	28
<i>CSS Examples</i>	31

Color

**XYZ(29.2263, 26.6419,
25.0747)**

Conversions

Conversions Part 1

Format	Color
Hex	AC8383
RGB	172, 131, 131
RGB Percent	67%, 51%, 51%
CMY	0.3255, 0.4863, 0.4863
CMYK	0.00, 0.24, 0.24, 0.33
HSL	0°, 20%, 59%
HSV	0°, 24%, 67%
XYZ	29.2263, 26.6419, 25.0747
YIQ	143.2590, 24.4360, 8.6920

Conversions

Conversions Part 2

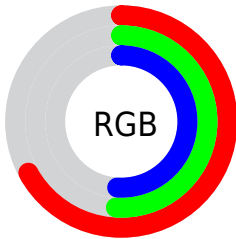
Format	Color
R _Y B	172, 131, 131
Decimal	11305859
CIE Lab	58.64, 15.75, 6.10
CIE LCh	59, 16.891, 21.178
Yxy	26.6419, 0.3611, 0.3291
Android (android.graphics.Color)	4289495939 (0xFFAC8383)
YUV	143.2590, -6.0437, 25.2059
Hunter-Lab	51.6158, 10.7440, 7.3283

Details

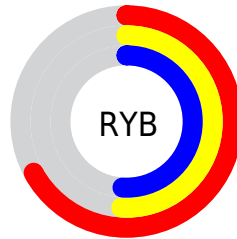
The XYZ color **29.2263, 26.6419, 25.0747** is a dark color, and the websafe version is hex **CC9999**. A complement of this color would be **31.5587, 37.3080, 44.5679**, and the grayscale version is **26.2290, 27.5950, 30.0509**.

A 20% lighter version of the original color is **57.7871, 54.2357, 52.7702**, and **12.0732, 10.4160, 9.3568** is the 20% darker color. If you saturate the color by 10%, you get **26.0347, 21.9719, 18.7290**, and if you desaturate by 10%, it is **32.9963, 32.1587, 32.5686**.

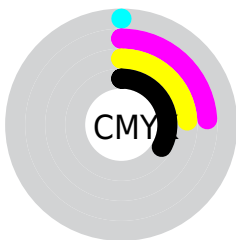
Distribution



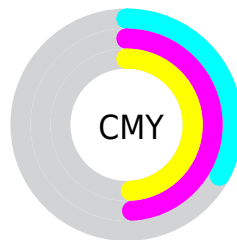
- Red (67%)
- Green (51%)
- Blue (51%)



- Red (67%)
- Yellow (51%)
- Blue (51%)



- Cyan (0%)
- Magenta (24%)
- Yellow (24%)
- Black (33%)



- Cyan (33%)
- Magenta (49%)
- Yellow (49%)

Brightness & Saturation Gradients

These gradients show how the XYZ color 29.2263, 26.6419, 25.0747 changes by changing the brightness by 10 percent. The first figure shows a shift by +10% for each color and the second figure -10%.

Similar to the brightness gradients but the following saturation gradients show a change of the XYZ color 29.2263, 26.6419, 25.0747 by changing the saturation by 10% instead.

■ 29.2263, 26.6419,
25.0747

■ 29.2263, 26.6419,
25.0747

290.2562,
285.9191, 291.6693

■ 19.3972, 17.3045,
15.9132

■ 57.8315, 54.3087,
52.7440

■ 12.0634, 10.4518,
9.3091

■ 77.3384, 73.4068,
72.0889

■ 6.8593, 5.6995,
4.8438

■ 100.8018, 96.5273,
95.6653

■ 3.4198, 2.6633,
2.0987

128.5873,
124.0546, 123.8918

■ 1.3795, 0.9586,
0.6150

161.0601,
156.3730, 157.1869

■ 0.2415, 0.0000,
0.0000

198.5856,

■ 0.0000, 0.0000,

193.8670, 195.9692

0.0000

241.5292,
236.9208, 240.6571

■ 29.2263, 26.6419,
25.0747

■ 29.2263, 26.6419,
25.0747

■ 26.0347, 21.9719,
18.7290

■ 32.9963, 32.1587,
32.5686

■ 23.3909, 18.1032,
13.4733

■ 37.3692, 38.5573,
41.2617

■ 21.2648, 14.9921,
9.2468

■ 42.3703, 45.8753,
51.2040

■ 19.6224, 12.5888,
5.9820

■ 48.0232, 54.1470,
62.4421

■ 18.4258, 10.8378,
3.6034

■ 54.3502, 63.4050,
75.0203

■ 17.6314, 9.6752,
2.0244

■ 61.3724, 73.6803,
88.9806

■ 17.1868, 9.0245,
1.1407

■ 69.1101, 85.0026,
104.3634

■ 17.0135, 8.7710,
0.7963

■ 70.8234, 87.5107,
107.7662

Harmonies

Analogous

The Analogous color harmony consists of three colors that are next to each other on the color wheel.



29.4714, 26.6419, 30.7959



29.2263, 26.6419, 25.0747



27.9058, 26.6419, 20.9885

Triad

The Triadic color harmony groups three colors that are evenly spaced from another and form a triangle on the color wheel.



29.2263, 26.6419, 25.0747



22.3404, 26.6419, 22.4209



24.7155, 26.6419, 41.8227

Complementary

The Complementary color scheme is a pair of colors which are on the opposite of each other on the color wheel.



29.2263, 26.6419, 25.0747



31.5587, 37.3080, 44.5679

Split Complementary

Split-complementary colors differ from the complementary color scheme. The scheme consists of three colors, the original color and two neighbors of the complement color.



22.9034, 26.6419, 38.8484



29.2263, 26.6419, 25.0747



21.5822, 26.6419, 27.2917

Square

The Square scheme is like the rectangle color scheme, but the four colors are evenly spaced on the color wheel.



29.2263, 26.6419, 25.0747



23.9087, 26.6419, 19.6081



21.7825, 26.6419, 33.3336



26.7906, 26.6419, 41.0160

Rectangle

The Rectangle color scheme consists of four colors that form a rectangle on the color wheel.



29.2263, 26.6419, 25.0747



26.6310, 26.6419, 19.4847



21.7825, 26.6419, 33.3336



24.0572, 26.6419, 41.2186

Sweetspot

The Sweet Spot groups the original color and five complimentary colors.



29.2270, 26.6431, 25.0752



65.0604, 65.9500, 69.4224



32.5763, 27.9821, 42.7142



14.0396, 14.1869, 14.8894



82.5889, 86.8899, 94.6231



15.4596, 16.2647, 17.7123

Same Dimension

The Same Dimension uses a secret algorithm to generate beautiful new colors.



29.2270, 26.6431, 25.0752



49.6056, 43.3354, 38.6986



32.2575, 32.7042, 26.0854



8.0053, 8.0155, 8.3386



12.6608, 6.5271, 0.5926



0.3522, 0.1816, 0.0165

Inverse Universe

The Inverse Universe completely reimagines the original color for something new.



31.5587, 37.3080, 44.5679



54.6332, 66.3315, 80.7296



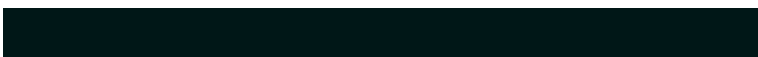
27.9540, 30.0987, 43.3663



8.2363, 9.0720, 10.2697



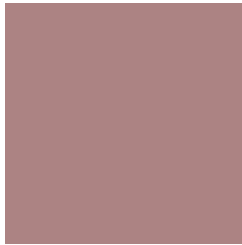
16.5178, 24.1694, 32.8391



0.4595, 0.6724, 0.9136

Previews

White Background



This preview shows how the XYZ color 29.2263, 26.6419, 25.0747 looks on a white background.

Color Contrast Check

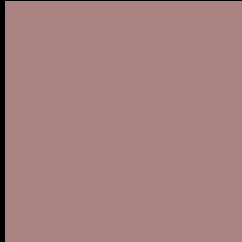
Large Text (above 18pt) WCAG AA ✓ Pass

Any Text WCAG AA × Fail

Large Text (above 18pt) WCAG AAA × Fail

Any Text WCAG AAA × Fail

Black Background



This preview shows how the XYZ color 29.2263, 26.6419, 25.0747 looks on a black background.

Color Contrast Check

Large Text (above 18pt) WCAG AA ✓ Pass

Any Text WCAG AA ✓ Pass

Large Text (above 18pt) WCAG AAA ✓ Pass

Any Text WCAG AAA × Fail

If you want to check with other color combinations, try the [Color Contrast Checker](#).

XYZ 29.2263, 26.6419, 25.0747

Background



This preview shows how black text looks on a background with the XYZ color 29.2263, 26.6419, 25.0747.



This preview shows how white text looks on a background with the XYZ color 29.2263, 26.6419,

Color Blindness Simulation

Color vision deficiency is a very complex topic, and I could not describe the different causes any better than Wikipedia does, so if you want to learn more, you should check out their [article about color blindness](#).

Dichromacy



Original Color

29.2263, 26.6419, 25.0747

Protanopia

25.6459, 26.8471, 27.1229

Deuteranopia

27.1315, 26.5910, 24.8217



Tritanopia

29.9498, 26.7429, 28.3943

Trichromacy



Original Color

29.2263, 26.6419, 25.0747

Protanomaly

26.7663, 26.5811, 26.2742

Deuteranomaly

27.8642, 26.5544, 24.7760

Tritanomaly

29.7316, 26.6556, 27.2449

Monochromacy



Original Color

29.2263, 26.6419, 25.0747

Achromatopsia

26.1081, 27.4677, 29.9124

Achromatomaly

27.2192, 27.1993, 28.2415

CSS Examples

Text

The CSS property to change the color of the text to XYZ 29.2263, 26.6419, 25.0747 is called "color". The color property can be set on classes, ids or directly on the HTML element.

This example shows how text in the color `rgb(172, 131, 131)` looks like.

```
.text, #text, p{  
    color:rgb(172, 131, 131)  
}
```

If you want to add a text shadow in that color use the text-shadow property, you can generate a text shadow directly with our [CSS Text Shadow Generator](#).

Here you see how black text with a 4 pixel rgb(172, 131, 131) colored shadow looks like.

```
.shadow{ text-shadow: 4px 4px 2px rgb(172, 131, 131) }
```

Border

The CSS property to change the border of an element to XYZ 29.2263, 26.6419, 25.0747 is called "border". The border property can be set on classes, ids or directly on the HTML element.

This example shows the color as border, it can be applied via the CSS property "border" or "border-color".

```
.border, #border, table{ border:4px solid rgb(172, 131, 131) }
```


If only the border color should be changed use the property `border-color`.

```
.border{ border-color:rgb(172, 131, 131) }
```

If you want to add a box shadow in that color use:

Here you see how a box with a 4 pixel `rgb(172, 131, 131)` colored shadow looks like.

```
.boxshadow{ -moz-box-shadow:4px 4px 4px  
4px rgb(172, 131, 131); -webkit-box-  
shadow:4px 4px 4px 4px rgb(172, 131, 131);  
box-shadow:4px 4px 4px 4px rgb(172, 131,  
131) }
```

Background

The CSS property to change the background color of an element to XYZ 29.2263, 26.6419, 25.0747 is called "background". The background property can be set on classes, ids or directly on the HTML element.

```
.background, #background, body{  
background: rgb(172, 131, 131) }
```

If only the background color should be changed can be used:

```
.background{ background-color: rgb(172,  
131, 131) }
```

This example shows the color as background, it is applied via the CSS property "background".

To optimize and compress your CSS code, you can use our [online CSS compressor and optimizer](#) based on csstidy. If you want to create a linear or radial gradient as background or border, check our [CSS Gradient Generator](#).

Hey! You found this booklet interesting? Support Converting Colors with the new Membership Option!

The pro membership hides all ads, plus gives you double the colors in the color bucket, and more awesome pro features!

[Learn more, Memberships starting at \\$2.50/m!](#)

**Follow me
on Twitter!**

@ConvertingColor