

Converting Colors

XYZ(29.1971, 27.3412, 26.6246)

Have a look what the booklet for
XYZ(29.1971, 27.3412, 26.6246)
contains.

XYZ(29.1856, 27.4020, 26.6725)	3
<i>Conversions</i>	4
<i>Details</i>	6
<i>Harmonies</i>	12
<i>Previews</i>	24
<i>Color Blindness Simulation</i>	28
<i>CSS Examples</i>	31

Color

**XYZ(29.1856, 27.4020,
26.6725)**

Conversions

Conversions Part 1

Format	Color
Hex	A88787
RGB	168, 135, 135
RGB Percent	66%, 53%, 53%
CMY	0.3412, 0.4706, 0.4706
CMYK	0.00, 0.20, 0.20, 0.34
HSL	0°, 16%, 59%
HSV	0°, 20%, 66%
XYZ	29.1856, 27.4020, 26.6725
YIQ	144.8670, 19.6680, 6.9960

Conversions

Conversions Part 2

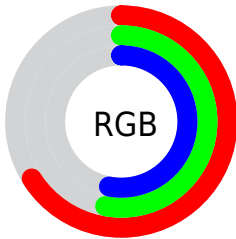
Format	Color
R_{YB}	168, 135, 135
Decimal	11044743
CIE _{Lab}	59.34, 12.56, 4.76
CIE _{LCh}	59, 13.435, 20.768
Yxy	27.4020, 0.3505, 0.3291
Android (android.graphics.Color)	4289234823 (0xFFA88787)
YUV	144.8670, -4.8644, 20.2876
Hunter-Lab	52.3469, 7.9141, 6.4326

Details

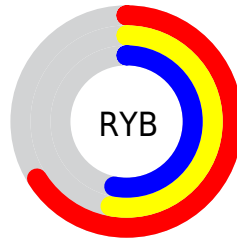
The XYZ color **29.1856, 27.4020, 26.6725** is a dark color, and the websafe version is hex **CC9999**. A complement of this color would be **31.0620, 35.9825, 42.3543**, and the grayscale version is **26.8738, 28.2733, 30.7896**.

A 20% lighter version of the original color is **57.8008, 55.4446, 55.2324**, and **11.9584, 10.7977, 10.0482** is the 20% darker color. If you saturate the color by 10%, you get **25.9332, 22.6430, 20.2059**, and if you desaturate by 10%, it is **32.9960, 32.9778, 34.2466**.

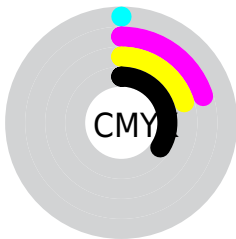
Distribution



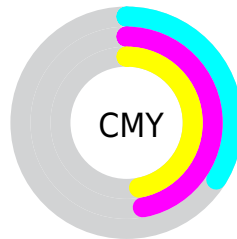
- Red (66%)
- Green (53%)
- Blue (53%)



- Red (66%)
- Yellow (53%)
- Blue (53%)



- Cyan (0%)
- Magenta (20%)
- Yellow (20%)
- Black (34%)



- Cyan (34%)
- Magenta (47%)
- Yellow (47%)

Brightness & Saturation Gradients

These gradients show how the XYZ color 29.1856, 27.4020, 26.6725 changes by changing the brightness by 10 percent. The first figure shows a shift by +10% for each color and the second figure -10%.

Similar to the brightness gradients but the following saturation gradients show a change of the XYZ color 29.1856, 27.4020, 26.6725 by changing the saturation by 10% instead.

■ 29.1856, 27.4020,
26.6725

■ 29.1856, 27.4020,
26.6725

290.0681,
289.5983, 299.7778

■ 19.3663, 17.8754,
17.0972

■ 57.7674, 55.5283,
55.3552

■ 12.0408, 10.8605,
10.1411

■ 77.2605, 74.8967,
75.2997

■ 6.8439, 5.9731,
5.3858

■ 100.7089, 98.3145,
99.5376

■ 3.4101, 2.8288,
2.4127

128.4780,
126.1661, 128.4875

■ 1.3742, 1.0430,
0.7933

160.9331,
158.8359, 162.5679

■ 0.2377, 0.0000,
0.0000

198.4396,

■ 0.0000, 0.0000,

196.7083, 202.1974

0.0000

241.3628,
240.1676, 247.7945

■ 29.1856, 27.4020,
26.6725

■ 29.1856, 27.4020,
26.6725

■ 25.9332, 22.6430,
20.2059

■ 32.9960, 32.9778,
34.2466

■ 23.2105, 18.6589,
14.7933

■ 37.3865, 39.4022,
42.9749

■ 20.9902, 15.4100,
10.3795

■ 42.3806, 46.7100,
52.9035

■ 19.2415, 12.8511,
6.9034

■ 48.0001, 54.9327,
64.0753

■ 17.9305, 10.9326,
4.2972

■ 54.2655, 64.1007,
76.5312

■ 17.0184, 9.5978,
2.4842

■ 61.1965, 74.2424,
90.3104

■ 16.4599, 8.7805,
1.3742

■ 68.8119, 85.3856,
105.4502

■ 16.1586, 8.3396,
0.7753

■ 69.9586, 87.0649,
107.7257

■ 16.1488, 8.3252,
0.7558

Harmonies

Analogous

The Analogous color harmony consists of three colors that are next to each other on the color wheel.



29.3674, 27.4020, 31.3461



29.1856, 27.4020, 26.6725



28.1431, 27.4020, 23.2245

Triad

The Triadic color harmony groups three colors that are evenly spaced from another and form a triangle on the color wheel.



29.1856, 27.4020, 26.6725



23.6203, 27.4020, 24.3558



25.5296, 27.4020, 39.9382

Complementary

The Complementary color scheme is a pair of colors which are on the opposite of each other on the color wheel.



29.1856, 27.4020, 26.6725



31.0620, 35.9825, 42.3543

Split Complementary

Split-complementary colors differ from the complementary color scheme. The scheme consists of three colors, the original color and two neighbors of the complement color.



24.0534, 27.4020, 37.5966



29.1856, 27.4020, 26.6725



22.9827, 27.4020, 28.3754

Square

The Square scheme is like the rectangle color scheme, but the four colors are evenly spaced on the color wheel.



29.1856, 27.4020, 26.6725



24.9153, 27.4020, 21.9903



23.1378, 27.4020, 33.2405



27.2078, 27.4020, 39.3561

Rectangle

The Rectangle color scheme consists of four colors that form a rectangle on the color wheel.



29.1856, 27.4020, 26.6725



27.1241, 27.4020, 21.9211



23.1378, 27.4020, 33.2405



24.9945, 27.4020, 39.4583

Sweetspot

The Sweet Spot groups the original color and five complimentary colors.



29.1864, 27.4032, 26.6731



62.5674, 63.7814, 67.4964



31.8806, 28.4803, 40.8631



13.5329, 13.7493, 14.5044



80.6108, 84.8088, 92.3568



14.7206, 15.4872, 16.8656

Same Dimension

The Same Dimension uses a secret algorithm to generate beautiful new colors.



29.1864, 27.4032, 26.6731



50.0070, 45.4021, 42.5263



31.6692, 32.3690, 27.5007



7.5312, 7.5424, 7.8482



12.1948, 6.2869, 0.5708



0.2967, 0.1530, 0.0139

Inverse Universe

The Inverse Universe completely reimagines the original color for something new.



31.0620, 35.9825, 42.3543



54.1006, 64.1268, 76.7514



28.2071, 30.2729, 41.4027



7.7475, 8.5320, 9.6568



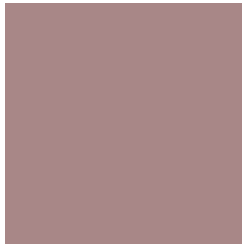
15.9095, 23.2791, 31.6303



0.3871, 0.5664, 0.7696

Previews

White Background



This preview shows how the XYZ color 29.1856, 27.4020, 26.6725 looks on a white background.

Color Contrast Check

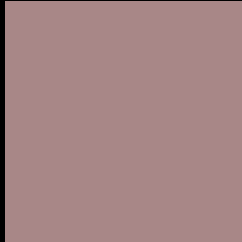
Large Text (above 18pt) WCAG AA ✓ Pass

Any Text WCAG AA × Fail

Large Text (above 18pt) WCAG AAA × Fail

Any Text WCAG AAA × Fail

Black Background



This preview shows how the XYZ color 29.1856, 27.4020, 26.6725 looks on a black background.

Color Contrast Check

Large Text (above 18pt) WCAG AA ✓ Pass

Any Text WCAG AA ✓ Pass

Large Text (above 18pt) WCAG AAA ✓ Pass

Any Text WCAG AAA × Fail

If you want to check with other color combinations, try the [Color Contrast Checker](#).

XYZ 29.1856, 27.4020, 26.6725

Background



This preview shows how black text looks on a background with the XYZ color 29.1856, 27.4020, 26.6725.



This preview shows how white text looks on a background with the XYZ color 29.1856, 27.4020,

26.6725.

Color Blindness Simulation

Color vision deficiency is a very complex topic, and I could not describe the different causes any better than Wikipedia does, so if you want to learn more, you should check out their [article about color blindness](#).

Dichromacy



Original Color

29.1856, 27.4020, 26.6725

Protanopia

26.3658, 27.4131, 28.3277

Deuteranopia

27.8888, 27.3718, 26.3676



Tritanopia

29.9213, 27.4988, 30.1163

Trichromacy



Original Color

29.1856, 27.4020, 26.6725

Protanomaly

27.3376, 27.2688, 27.8673

Deuteranomaly

28.3530, 27.3991, 26.3484

Tritanomaly

29.6950, 27.4083, 28.9245

Monochromacy



Original Color

29.1856, 27.4020, 26.6725

Achromatopsia

26.9133, 28.3149, 30.8349

Achromatomaly

27.4695, 27.7451, 29.1069

CSS Examples

Text

The CSS property to change the color of the text to XYZ 29.1856, 27.4020, 26.6725 is called "color". The color property can be set on classes, ids or directly on the HTML element.

This example shows how text in the color `rgb(168, 135, 135)` looks like.

```
.text, #text, p{  
    color:rgb(168, 135, 135)  
}
```

If you want to add a text shadow in that color use the text-shadow property, you can generate a text shadow directly with our [CSS Text Shadow Generator](#).

Here you see how black text with a 4 pixel rgb(168, 135, 135) colored shadow looks like.

```
.shadow{ text-shadow: 4px 4px 2px rgb(168, 135, 135) }
```

Border

The CSS property to change the border of an element to XYZ 29.1856, 27.4020, 26.6725 is called "border". The border property can be set on classes, ids or directly on the HTML element.

This example shows the color as border, it can be applied via the CSS property "border" or "border-color".

```
.border, #border, table{ border:4px solid rgb(168, 135, 135) }
```


If only the border color should be changed use the property `border-color`.

```
.border{ border-color:rgb(168, 135, 135) }
```

If you want to add a box shadow in that color use:

Here you see how a box with a 4 pixel `rgb(168, 135, 135)` colored shadow looks like.

```
.boxshadow{ -moz-box-shadow:4px 4px 4px 4px rgb(168, 135, 135); -webkit-box-shadow:4px 4px 4px 4px rgb(168, 135, 135); box-shadow:4px 4px 4px 4px rgb(168, 135, 135) }
```

Background

The CSS property to change the background color of an element to XYZ 29.1856, 27.4020, 26.6725 is called "background". The background property can be set on classes, ids or directly on the HTML element.

```
.background, #background, body{  
background: rgb(168, 135, 135) }
```

If only the background color should be changed can be used:

```
.background{ background-color: rgb(168,  
135, 135) }
```

This example shows the color as background, it is applied via the CSS property "background".

To optimize and compress your CSS code, you can use our [online CSS compressor and optimizer](#) based on csstidy. If you want to create a linear or radial gradient as background or border, check our [CSS Gradient Generator](#).

Hey! You found this booklet interesting? Support Converting Colors with the new Membership Option!

The pro membership hides all ads, plus gives you double the colors in the color bucket, and more awesome pro features!

[Learn more, Memberships starting at \\$2.50/m!](#)

**Follow me
on Twitter!**

@ConvertingColor