

Converting Colors

XYZ(29.2520, 25.8456, 23.4178)

Have a look what the booklet for
XYZ(29.2520, 25.8456, 23.4178)
contains.

XYZ(29.3246, 25.9412, 23.5402)	3
<i>Conversions</i>	4
<i>Details</i>	6
<i>Harmonies</i>	12
<i>Previews</i>	24
<i>Color Blindness Simulation</i>	28
<i>CSS Examples</i>	31

Color

**XYZ(29.3246, 25.9412,
23.5402)**

Conversions

Conversions Part 1

Format	Color
Hex	B07F7F
RGB	176, 127, 127
RGB Percent	69%, 50%, 50%
CMY	0.3098, 0.5019, 0.5020
CMYK	0.00, 0.28, 0.28, 0.31
HSL	0°, 24%, 59%
HSV	0°, 28%, 69%
XYZ	29.3246, 25.9412, 23.5402
YIQ	141.6510, 29.2040, 10.3880

Conversions

Conversions Part 2

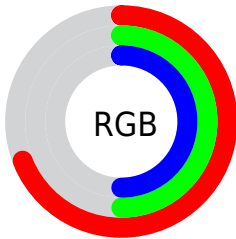
Format	Color
R_{YB}	176, 127, 127
Decimal	11566975
CIE _{Lab}	57.98, 18.97, 7.52
CIE _{LCh}	58, 20.409, 21.613
Yxy	25.9412, 0.3721, 0.3292
Android (android.graphics.Color)	4289757055 (0xFFB07F7F)
YUV	141.6510, -7.2229, 30.1241
Hunter-Lab	50.9325, 13.6402, 8.2499

Details

The XYZ color **29.3246, 25.9412, 23.5402** is a dark color, and the websafe version is hex **996666**. A complement of this color would be **32.1135, 38.6958, 46.8507**, and the grayscale version is **25.5935, 26.9263, 29.3228**.

A 20% lighter version of the original color is **58.1637, 53.2614, 50.3949**, and **12.0551, 9.9954, 8.5017** is the 20% darker color. If you saturate the color by 10%, you get **26.1985, 21.3670, 17.3248**, and if you desaturate by 10%, it is **33.0495, 31.3919, 30.9443**.

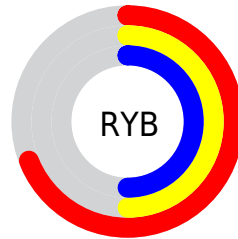
Distribution



Red (69%)

Green (50%)

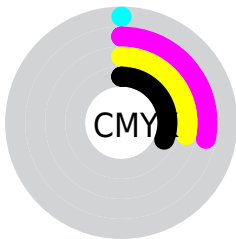
Blue (50%)



Red (69%)

Yellow (50%)

Blue (50%)

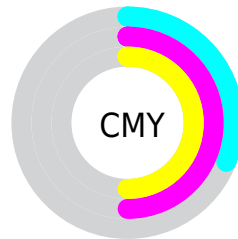


Cyan (0%)

Magenta (28%)

Yellow (28%)

Black (31%)



Cyan (31%)

Magenta (50%)

Yellow (50%)

Brightness & Saturation Gradients

These gradients show how the XYZ color 29.3246, 25.9412, 23.5402 changes by changing the brightness by 10 percent. The first figure shows a shift by +10% for each color and the second figure -10%.

Similar to the brightness gradients but the following saturation gradients show a change of the XYZ color 29.3246, 25.9412, 23.5402 by changing the saturation by 10% instead.

■ 29.3246, 25.9412,
23.5402

■ 29.3246, 25.9412,
23.5402

290.7101,
282.4933, 283.6989

■ 19.4720, 16.7797,
14.7839

■ 57.9864, 53.1801,
50.2132

■ 12.1179, 10.0775,
8.5229

■ 77.5264, 72.0262,
68.9670

■ 6.8968, 5.4504,
4.3388

■ 101.0261, 94.8693,
91.8903

■ 3.4434, 2.5139,
1.8130

128.8511,
122.0938, 119.4016

■ 1.3923, 0.8836,
0.4365

161.3667,
154.0840, 151.9197

■ 0.2508, 0.0000,
0.0000

198.9381,

■ 0.0000, 0.0000,

191.2244, 189.8628

0.0000

241.9308,
233.8994, 233.6497

■ 29.3246, 25.9412,
23.5402

■ 29.3246, 25.9412,
23.5402

■ 26.1985, 21.3670,
17.3248

■ 33.0495, 31.3919,
30.9443

■ 23.6381, 17.6203,
12.2348

■ 37.3999, 37.7577,
39.5929

■ 21.6101, 14.6528,
8.2034

■ 42.4034, 45.0793,
49.5400

■ 20.0770, 12.4094,
5.1560

■ 48.0855, 53.3937,
60.8361

■ 18.9966, 10.8284,
3.0084

■ 54.4702, 62.7361,
73.5289

■ 18.3194, 9.8374,
1.6624

■ 61.5802, 73.1399,
87.6639

■ 17.9667, 9.3212,
0.9614

■ 69.4375, 84.6371,
103.2845

■ 17.9046, 9.2304,
0.8380

■ 71.7145, 87.9701,
107.8079

Harmonies

Analogous

The Analogous color harmony consists of three colors that are next to each other on the color wheel.



29.6425, 25.9412, 30.2696



29.3246, 25.9412, 23.5402



27.7144, 25.9412, 18.8955

Triad

The Triadic color harmony groups three colors that are evenly spaced from another and form a triangle on the color wheel.



29.3246, 25.9412, 23.5402



21.1287, 25.9412, 20.6353



23.9723, 25.9412, 43.8936

Complementary

The Complementary color scheme is a pair of colors which are on the opposite of each other on the color wheel.



29.3246, 25.9412, 23.5402



32.1135, 38.6958, 46.8507

Split Complementary

Split-complementary colors differ from the complementary color scheme. The scheme consists of three colors, the original color and two neighbors of the complement color.



21.8319, 25.9412, 40.2613



29.3246, 25.9412, 23.5402



20.2632, 25.9412, 26.3138

Square

The Square scheme is like the rectangle color scheme, but the four colors are evenly spaced on the color wheel.



29.3246, 25.9412, 23.5402



22.9534, 25.9412, 17.4229



20.5118, 25.9412, 33.5395



26.4415, 25.9412, 42.8182

Rectangle

The Rectangle color scheme consists of four colors that form a rectangle on the color wheel.



29.3246, 25.9412, 23.5402



26.1800, 25.9412, 17.2344



20.5118, 25.9412, 33.5395



23.1930, 25.9412, 43.1636

Sweetspot

The Sweet Spot groups the original color and five complimentary colors.



29.3253, 25.9424, 23.5407



67.5778, 68.1094, 71.3048



33.3304, 27.5436, 44.6340



14.3771, 14.3682, 14.9200



84.5950, 89.0005, 96.9216



16.2198, 17.0645, 18.5832

Same Dimension

The Same Dimension uses a secret algorithm to generate beautiful new colors.



29.3253, 25.9424, 23.5407



49.8039, 42.1014, 35.9708



32.8826, 33.0571, 24.7265



8.4964, 8.5054, 8.8464



13.1370, 6.7726, 0.6148



0.4134, 0.2131, 0.0194

Inverse Universe

The Inverse Universe completely reimagines the original color for something new.



32.1135, 38.6958, 46.8507



55.6507, 68.8444, 84.8505



27.7363, 29.9413, 45.3917



8.7426, 9.6314, 10.9046



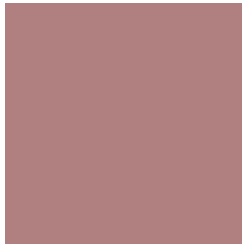
17.1390, 25.0783, 34.0743



0.5393, 0.7891, 1.0721

Previews

White Background



This preview shows how the XYZ color 29.3246, 25.9412, 23.5402 looks on a white background.

Color Contrast Check

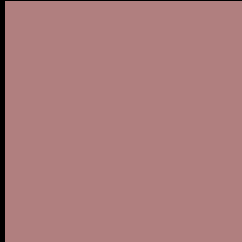
Large Text (above 18pt) WCAG AA ✓ Pass

Any Text WCAG AA ✗ Fail

Large Text (above 18pt) WCAG AAA ✗ Fail

Any Text WCAG AAA ✗ Fail

Black Background



This preview shows how the XYZ color 29.3246, 25.9412, 23.5402 looks on a black background.

Color Contrast Check

Large Text (above 18pt) WCAG AA ✓ Pass

Any Text WCAG AA ✓ Pass

Large Text (above 18pt) WCAG AAA ✓ Pass

Any Text WCAG AAA × Fail

If you want to check with other color combinations, try the [Color Contrast Checker](#).

XYZ 29.3246, 25.9412, 23.5402

Background



This preview shows how black text looks on a background with the XYZ color 29.3246, 25.9412, 23.5402.



This preview shows how white text looks on a background with the XYZ color 29.3246, 25.9412,

Color Blindness Simulation

Color vision deficiency is a very complex topic, and I could not describe the different causes any better than Wikipedia does, so if you want to learn more, you should check out their [article about color blindness](#).

Dichromacy



Original Color

29.3246, 25.9412, 23.5402

Protanopia

24.9679, 26.0880, 25.9098

Deuteranopia

26.5304, 26.1034, 23.3788



Tritanopia

29.9655, 26.0181, 26.3643

Trichromacy



Original Color

29.3246, 25.9412, 23.5402

Protanomaly

26.4710, 26.0346, 25.1027

Deuteranomaly

27.5342, 26.0082, 23.3075

Tritanomaly

29.7572, 25.9348, 25.2673

Monochromacy



Original Color

29.3246, 25.9412, 23.5402

Achromatopsia

25.7108, 27.0498, 29.4572

Achromatomaly

26.7874, 26.5675, 27.3831

CSS Examples

Text

The CSS property to change the color of the text to XYZ 29.3246, 25.9412, 23.5402 is called "color". The color property can be set on classes, ids or directly on the HTML element.

This example shows how text in the color `rgb(176, 127, 127)` looks like.

```
.text, #text, p{  
    color:rgb(176, 127, 127)  
}
```

If you want to add a text shadow in that color use the text-shadow property, you can generate a text shadow directly with our [CSS Text Shadow Generator](#).

Here you see how black text with a 4 pixel rgb(176, 127, 127) colored shadow looks like.

```
.shadow{ text-shadow: 4px 4px 2px rgb(176, 127, 127) }
```

Border

The CSS property to change the border of an element to XYZ 29.3246, 25.9412, 23.5402 is called "border". The border property can be set on classes, ids or directly on the HTML element.

This example shows the color as border, it can be applied via the CSS property "border" or "border-color".

```
.border, #border, table{ border:4px solid rgb(176, 127, 127) }
```


If only the border color should be changed use the property border-color.

```
.border{ border-color:rgb(176, 127, 127) }
```

If you want to add a box shadow in that color use:

Here you see how a box with a 4 pixel rgb(176, 127, 127) colored shadow looks like.

```
.boxshadow{ -moz-box-shadow:4px 4px 4px  
4px rgb(176, 127, 127); -webkit-box-  
shadow:4px 4px 4px 4px rgb(176, 127, 127);  
box-shadow:4px 4px 4px 4px rgb(176, 127,  
127) }
```

Background

The CSS property to change the background color of an element to XYZ 29.3246, 25.9412, 23.5402 is called "background". The background property can be set on classes, ids or directly on the HTML element.

```
.background, #background, body{  
background: rgb(176, 127, 127) }
```

If only the background color should be changed can be used:

```
.background{ background-color: rgb(176,  
127, 127) }
```

This example shows the color as background, it is applied via the CSS property "background".

To optimize and compress your CSS code, you can use our [online CSS compressor and optimizer](#) based on csstidy. If you want to create a linear or radial gradient as background or border, check our [CSS Gradient Generator](#).

Hey! You found this booklet interesting? Support Converting Colors with the new Membership Option!

The pro membership hides all ads, plus gives you double the colors in the color bucket, and more awesome pro features!

[Learn more, Memberships starting at \\$2.50/m!](#)

**Follow me
on Twitter!**

@ConvertingColor