

Converting Colors

XYZ(29.2541, 27.8492, 12.1072)

Have a look what the booklet for
XYZ(29.2541, 27.8492, 12.1072)
contains.

XYZ(29.2814, 27.7762, 12.0017)	3
<i>Conversions</i>	4
<i>Details</i>	6
<i>Harmonies</i>	12
<i>Previews</i>	24
<i>Color Blindness Simulation</i>	28
<i>CSS Examples</i>	31

Color

**XYZ(29.2814, 27.7762,
12.0017)**

Conversions

Conversions Part 1

Format	Color
Hex	B58753
RGB	181, 135, 83
RGB Percent	71%, 53%, 33%
CMY	0.2902, 0.4706, 0.6745
CMYK	0.00, 0.25, 0.54, 0.29
HSL	32°, 40%, 52%
HSV	32°, 54%, 71%
XYZ	29.2814, 27.7762, 12.0017
YIQ	142.8260, 44.1080, -6.4200

Conversions

Conversions Part 2

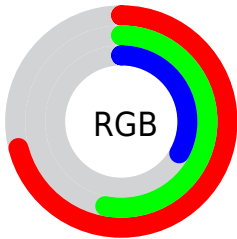
Format	Color
RYB	170, 181, 83
Decimal	11896659
CIELab	59.69, 11.46, 34.60
CIElCh	60, 36.448, 71.675
Yxy	27.7762, 0.4240, 0.4022
Android (android.graphics.Color)	4290086739 (0xFFB58753)
YUV	142.8260, -29.4942, 33.4786
Hunter-Lab	52.7031, 6.9426, 23.3905

Details

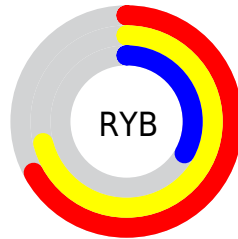
The XYZ color **29.2814, 27.7762, 12.0017** is a dark color, and the websafe version is hex **CC9966**. A complement of this color would be **19.7578, 20.8750, 46.7040**, and the grayscale version is **26.1412, 27.5026, 29.9503**.

A 20% lighter version of the original color is **57.8829, 56.0384, 30.3200**, and **12.0244, 10.9843, 3.1555** is the 20% darker color. If you saturate the color by 10%, you get **27.5335, 25.2566, 8.4100**, and if you desaturate by 10%, it is **31.3077, 30.5607, 16.5868**.

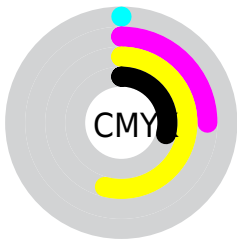
Distribution



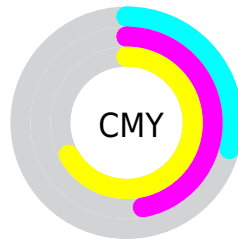
- Red (71%)
- Green (53%)
- Blue (33%)



- Red (67%)
- Yellow (71%)
- Blue (33%)



- Cyan (0%)
- Magenta (25%)
- Yellow (54%)
- Black (29%)



- Cyan (29%)
- Magenta (47%)
- Yellow (67%)

Brightness & Saturation Gradients

These gradients show how the XYZ color 29.2814, 27.7762, 12.0017 changes by changing the brightness by 10 percent. The first figure shows a shift by +10% for each color and the second figure -10%.

Similar to the brightness gradients but the following saturation gradients show a change of the XYZ color 29.2814, 27.7762, 12.0017 by changing the saturation by 10% instead.

■ 29.2814, 27.7762,
12.0017

■ 29.2814, 27.7762,
12.0017

290.5107,
291.3960, 215.3949

■ 19.4392, 18.1570,
6.6223

■ 57.9183, 56.1269,
30.1626

■ 12.0939, 11.0628,
3.1522

■ 77.4438, 75.6273,
43.7813

■ 6.8803, 6.1091,
1.1729

■ 100.9276, 99.1901,
60.9833

■ 3.4330, 2.9115,
0.0000

■ 128.7352,
127.1999, 82.1874

■ 1.3867, 1.0857,
0.0000

■ 161.2320,
160.0410, 107.8121

■ 0.2467, 0.0000,
0.0000

198.7832,

■ 0.0000, 0.0000,

198.0978, 138.2759

0.0000

241.7544,
241.7546, 173.9973

■ 29.2814, 27.7762,
12.0017

■ 29.2814, 27.7762,
12.0017

■ 27.5335, 25.2566,
8.4100

■ 31.3077, 30.5607,
16.5868

■ 26.0453, 22.9876,
5.7327

■ 33.6254, 33.6154,
22.2325

■ 24.7983, 20.9593,
3.8817

■ 36.2491, 36.9505,
29.0022

■ 23.7702, 19.1590,
2.7499

■ 39.1915, 40.5744,
36.9536

■ 23.2433, 18.1982,
2.2876

■ 42.4648, 44.4949,
46.1404

■ 46.0802, 48.7196,
56.6133

■ 50.0486, 53.2557,
68.4197

■ 54.3801, 58.1102,
81.6048

■ 59.0846, 63.2897,
96.2118

Harmonies

Analogous

The Analogous color harmony consists of three colors that are next to each other on the color wheel.



33.5766, 27.7762, 16.3293



29.2814, 27.7762, 12.0017



24.6501, 27.7762, 11.5955

Triad

The Triadic color harmony groups three colors that are evenly spaced from another and form a triangle on the color wheel.



29.2814, 27.7762, 12.0017



18.6484, 27.7762, 35.6669



32.7318, 27.7762, 53.3956

Complementary

The Complementary color scheme is a pair of colors which are on the opposite of each other on the color wheel.



29.2814, 27.7762, 12.0017



19.7578, 20.8750, 46.7040

Split Complementary

Split-complementary colors differ from the complementary color scheme. The scheme consists of three colors, the original color and two neighbors of the complement color.



28.2318, 27.7762, 62.4682



29.2814, 27.7762, 12.0017



20.3274, 27.7762, 50.4162

Square

The Square scheme is like the rectangle color scheme, but the four colors are evenly spaced on the color wheel.



29.2814, 27.7762, 12.0017



18.8600, 27.7762, 22.9551



23.7149, 27.7762, 61.2422



35.7226, 27.7762, 38.9314

Rectangle

The Rectangle color scheme consists of four colors that form a rectangle on the color wheel.



29.2814, 27.7762, 12.0017



22.0213, 27.7762, 13.3970



23.7149, 27.7762, 61.2422



31.3247, 27.7762, 57.3431

Sweetspot

The Sweet Spot groups the original color and five complimentary colors.



29.2821, 27.7776, 12.0022



69.0228, 71.2450, 62.9756



26.2034, 17.6321, 23.2709



14.6836, 15.1112, 12.9724



86.6293, 91.1408, 99.2523



17.0014, 17.8868, 19.4787

Same Dimension

The Same Dimension uses a secret algorithm to generate beautiful new colors.



29.2821, 27.7776, 12.0022



48.7585, 44.4097, 14.0067



36.7605, 43.2998, 14.6042



8.8572, 9.2269, 8.9667



16.0934, 12.6854, 1.6003



0.5642, 0.5147, 0.0696

Inverse Universe

The Inverse Universe completely reimagines the original color for something new.



19.7578, 20.8750, 46.7040



29.9299, 30.7799, 82.6582



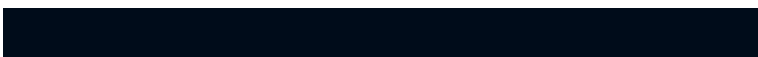
15.1471, 11.4372, 45.1253



8.3598, 8.8659, 10.7770



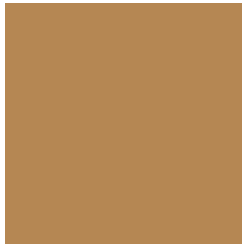
8.0549, 6.9102, 31.0462



0.3120, 0.3345, 0.9964

Previews

White Background



This preview shows how the XYZ color 29.2814, 27.7762, 12.0017 looks on a white background.

Color Contrast Check

Large Text (above 18pt) WCAG AA ✓ Pass

Any Text WCAG AA × Fail

Large Text (above 18pt) WCAG AAA × Fail

Any Text WCAG AAA × Fail

Black Background



This preview shows how the XYZ color 29.2814, 27.7762, 12.0017 looks on a black background.

Color Contrast Check

Large Text (above 18pt) WCAG AA ✓ Pass

Any Text WCAG AA ✓ Pass

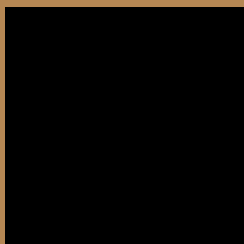
Large Text (above 18pt) WCAG AAA ✓ Pass

Any Text WCAG AAA × Fail

If you want to check with other color combinations, try the [Color Contrast Checker](#).

XYZ 29.2814, 27.7762, 12.0017

Background



This preview shows how black text looks on a background with the XYZ color 29.2814, 27.7762, 12.0017.



This preview shows how white text looks on a background with the XYZ color 29.2814, 27.7762,

Color Blindness Simulation

Color vision deficiency is a very complex topic, and I could not describe the different causes any better than Wikipedia does, so if you want to learn more, you should check out their [article about color blindness](#).

Dichromacy



Original Color

29.2814, 27.7762, 12.0017

Protanopia

25.7535, 27.8875, 12.8296

Deuteranopia

28.1478, 27.6145, 11.8292



Tritanopia

32.5563, 27.7124, 27.6779

Trichromacy



Original Color

29.2814, 27.7762, 12.0017

Protanomaly

26.8905, 27.8126, 12.5454

Deuteranomaly

28.4586, 27.5646, 11.8032

Tritanomaly

31.1535, 27.7310, 20.8502

Monochromacy



Original Color

29.2814, 27.7762, 12.0017

Achromatopsia

26.1081, 27.4677, 29.9124

Achromatomaly

26.7339, 27.3047, 21.9505

CSS Examples

Text

The CSS property to change the color of the text to XYZ 29.2814, 27.7762, 12.0017 is called "color". The color property can be set on classes, ids or directly on the HTML element.

This example shows how text in the color `rgb(181, 135, 83)` looks like.

```
.text, #text, p{  
    color:rgb(181, 135, 83)  
}
```

If you want to add a text shadow in that color use the text-shadow property, you can generate a text shadow directly with our [CSS Text Shadow Generator](#).

Here you see how black text with a 4 pixel rgb(181, 135, 83) colored shadow looks like.

```
.shadow{ text-shadow: 4px 4px 2px rgb(181, 135, 83) }
```

Border

The CSS property to change the border of an element to XYZ 29.2814, 27.7762, 12.0017 is called "border". The border property can be set on classes, ids or directly on the HTML element.

This example shows the color as border, it can be applied via the CSS property "border" or "border-color".

```
.border, #border, table{ border:4px solid rgb(181, 135, 83) }
```


If only the border color should be changed use the property `border-color`.

```
.border{ border-color:rgb(181, 135, 83) }
```

If you want to add a box shadow in that color use:

Here you see how a box with a 4 pixel `rgb(181, 135, 83)` colored shadow looks like.

```
.boxshadow{ -moz-box-shadow:4px 4px 4px  
4px rgb(181, 135, 83); -webkit-box-  
shadow:4px 4px 4px 4px rgb(181, 135, 83);  
box-shadow:4px 4px 4px 4px rgb(181, 135,  
83) }
```

Background

The CSS property to change the background color of an element to XYZ 29.2814, 27.7762, 12.0017 is called "background". The background property can be set on classes, ids or directly on the HTML element.

```
.background, #background, body{  
background: rgb(181, 135, 83) }
```

If only the background color should be changed can be used:

```
.background{ background-color: rgb(181,  
135, 83) }
```

This example shows the color as background, it is applied via the CSS property "background".

To optimize and compress your CSS code, you can use our [online CSS compressor and optimizer](#) based on csstidy. If you want to create a linear or radial gradient as background or border, check our [CSS Gradient Generator](#).

Hey! You found this booklet interesting? Support Converting Colors with the new Membership Option!

The pro membership hides all ads, plus gives you double the colors in the color bucket, and more awesome pro features!

[Learn more, Memberships starting at \\$2.50/m!](#)

**Follow me
on Twitter!**

@ConvertingColor