

Converting Colors

XYZ(29.3535, 25.1284, 21.8473)

Have a look what the booklet for
XYZ(29.3535, 25.1284, 21.8473)
contains.

XYZ(29.2948, 25.0275, 21.6991)	3
<i>Conversions</i>	4
<i>Details</i>	6
<i>Harmonies</i>	12
<i>Previews</i>	24
<i>Color Blindness Simulation</i>	28
<i>CSS Examples</i>	31

Color

**XYZ(29.2948, 25.0275,
21.6991)**

Conversions

Conversions Part 1

Format	Color
Hex	B47A7A
RGB	180, 122, 122
RGB Percent	71%, 48%, 48%
CMY	0.2941, 0.5216, 0.5216
CMYK	0.00, 0.32, 0.32, 0.29
HSL	0°, 28%, 59%
HSV	0°, 32%, 71%
XYZ	29.2948, 25.0275, 21.6991
YIQ	139.3420, 34.5680, 12.2960

Conversions

Conversions Part 2

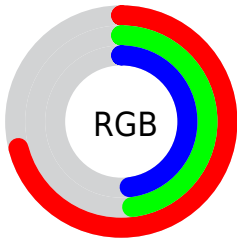
Format	Color
R_{YB}	180, 122, 122
Decimal	11827834
CIE _{Lab}	57.10, 22.65, 9.22
CIE _{LCh}	57, 24.452, 22.144
Yxy	25.0275, 0.3853, 0.3292
Android (android.graphics.Color)	4290017914 (0xFFB47A7A)
YUV	139.3420, -8.5496, 35.6571
Hunter-Lab	50.0275, 16.9769, 9.3026

Details

The XYZ color **29.2948, 25.0275, 21.6991** is a dark color, and the websafe version is hex **996666**. A complement of this color would be **32.5850, 40.0740, 49.1978**, and the grayscale version is **24.6956, 25.9817, 28.2941**.

A 20% lighter version of the original color is **57.8950, 51.7205, 46.9760**, and **12.0426, 9.6061, 7.5228** is the 20% darker color. If you saturate the color by 10%, you get **26.2721, 20.6046, 15.6893**, and if you desaturate by 10%, it is **32.9347, 30.3540, 28.9343**.

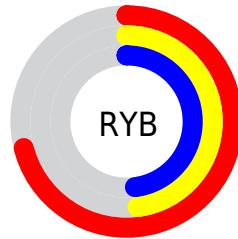
Distribution



Red (71%)

Green (48%)

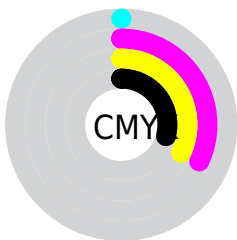
Blue (48%)



Red (71%)

Yellow (48%)

Blue (48%)

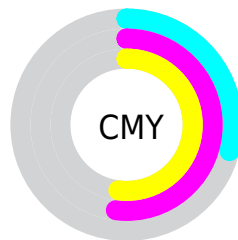


Cyan (0%)

Magenta (32%)

Yellow (32%)

Black (29%)



Cyan (29%)

Magenta (52%)

Yellow (52%)

Brightness & Saturation Gradients

These gradients show how the XYZ color 29.2948, 25.0275, 21.6991 changes by changing the brightness by 10 percent. The first figure shows a shift by +10% for each color and the second figure -10%.

Similar to the brightness gradients but the following saturation gradients show a change of the XYZ color 29.2948, 25.0275, 21.6991 by changing the saturation by 10% instead.

■ 29.2948, 25.0275,
21.6991

■ 29.2948, 25.0275,
21.6991

290.5725,
277.9749, 273.8729

■ 19.4493, 16.0975,
13.4398

■ 57.9395, 51.7018,
47.1440

■ 12.1013, 9.5932,
7.5978

■ 77.4694, 70.2150,
65.1666

■ 6.8854, 5.1301,
3.7546

■ 100.9582, 92.6914,
87.2807

■ 3.4362, 2.3238,
1.4917

128.7712,
119.5153, 113.9049

■ 1.3884, 0.7863,
0.2117

161.2738,
151.0712, 145.4577

■ 0.2480, 0.0000,
0.0000

198.8313,

■ 0.0000, 0.0000,

187.7435, 182.3575

0.0000

241.8091,
229.9166, 225.0231

■ 29.2948, 25.0275,
21.6991

■ 29.2948, 25.0275,
21.6991

■ 26.2721, 20.6046,
15.6893

■ 32.9347, 30.3540,
28.9343

■ 23.8305, 17.0319,
10.8357

■ 37.2214, 36.6265,
37.4560

■ 21.9335, 14.2559,
7.0646

■ 42.1846, 43.8891,
47.3228

■ 20.5392, 12.2156,
4.2930

■ 47.8520, 52.1820,
58.5896

■ 19.6000, 10.8412,
2.4261

■ 54.2495, 61.5433,
71.3078

■ 19.0589, 10.0494,
1.3507

■ 61.4017, 72.0089,
85.5265

■ 18.8226, 9.7036,
0.8809

■ 69.3322, 83.6134,
101.2926

■ 72.6325, 88.4433,
107.8509

Harmonies

Analogous

The Analogous color harmony consists of three colors that are next to each other on the color wheel.



29.7063, 25.0275, 29.4766



29.2948, 25.0275, 21.6991



27.3508, 25.0275, 16.5486

Triad

The Triadic color harmony groups three colors that are evenly spaced from another and form a triangle on the color wheel.



29.2948, 25.0275, 21.6991



19.6779, 25.0275, 18.6304



23.0389, 25.0275, 46.1746

Complementary

The Complementary color scheme is a pair of colors which are on the opposite of each other on the color wheel.



29.2948, 25.0275, 21.6991



32.5850, 40.0740, 49.1978

Split Complementary

Split-complementary colors differ from the complementary color scheme. The scheme consists of three colors, the original color and two neighbors of the complement color.



20.5487, 25.0275, 41.7890



29.2948, 25.0275, 21.6991



18.7129, 25.0275, 25.1397

Square

The Square scheme is like the rectangle color scheme, but the four colors are evenly spaced on the color wheel.



29.2948, 25.0275, 21.6991



21.7610, 25.0275, 15.0421



19.0183, 25.0275, 33.6766



25.9369, 25.0275, 44.7387

Rectangle

The Rectangle color scheme consists of four colors that form a rectangle on the color wheel.



29.2948, 25.0275, 21.6991



25.5267, 25.0275, 14.7707



19.0183, 25.0275, 33.6766



22.1299, 25.0275, 45.3058

Sweetspot

The Sweet Spot groups the original color and five complimentary colors.



29.2955, 25.0287, 21.6996



69.2339, 68.9632, 71.3823



34.0203, 26.9179, 46.5828



14.7086, 14.5318, 14.9207



86.6293, 91.1408, 99.2523



17.0014, 17.8868, 19.4787

Same Dimension

The Same Dimension uses a secret algorithm to generate beautiful new colors.



29.2955, 25.0287, 21.6996



48.9343, 39.2591, 31.0274



33.4021, 33.2419, 23.0685



8.4964, 8.5054, 8.8464



13.1370, 6.7725, 0.6148



0.4134, 0.2131, 0.0194

Inverse Universe

The Inverse Universe completely reimagines the original color for something new.



32.5850, 40.0740, 49.1978



55.8759, 71.0086, 89.0557



27.3311, 29.5663, 47.4466



8.7426, 9.6315, 10.9046



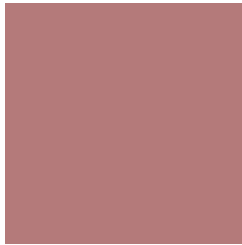
17.1394, 25.0791, 34.0744



0.5393, 0.7891, 1.0721

Previews

White Background



This preview shows how the XYZ color 29.2948, 25.0275, 21.6991 looks on a white background.

Color Contrast Check

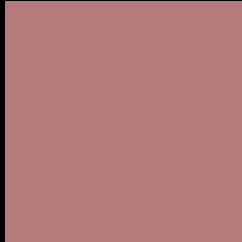
Large Text (above 18pt) WCAG AA ✓ Pass

Any Text WCAG AA ✗ Fail

Large Text (above 18pt) WCAG AAA ✗ Fail

Any Text WCAG AAA ✗ Fail

Black Background



This preview shows how the XYZ color 29.2948, 25.0275, 21.6991 looks on a black background.

Color Contrast Check

Large Text (above 18pt) WCAG AA ✓ Pass

Any Text WCAG AA ✓ Pass

Large Text (above 18pt) WCAG AAA ✓ Pass

Any Text WCAG AAA × Fail

If you want to check with other color combinations, try the [Color Contrast Checker](#).

XYZ 29.2948, 25.0275, 21.6991

Background



This preview shows how black text looks on a background with the XYZ color 29.2948, 25.0275, 21.6991.



This preview shows how white text looks on a background with the XYZ color 29.2948, 25.0275,

Color Blindness Simulation

Color vision deficiency is a very complex topic, and I could not describe the different causes any better than Wikipedia does, so if you want to learn more, you should check out their [article about color blindness](#).

Dichromacy



Original Color

29.2948, 25.0275, 21.6991

Protanopia

24.1303, 25.2538, 24.7218

Deuteranopia

25.5461, 25.0267, 21.2535



Tritanopia

29.9227, 25.1102, 24.3888

Trichromacy



Original Color

29.2948, 25.0275, 21.6991

Protanomaly

25.7923, 25.1028, 23.5646

Deuteranomaly

26.6874, 24.8182, 21.4730

Tritanomaly

29.7242, 25.0308, 23.3435

Monochromacy



Original Color

29.2948, 25.0275, 21.6991

Achromatopsia

24.5403, 25.8183, 28.1161

Achromatomaly

25.9476, 25.3385, 25.7135

CSS Examples

Text

The CSS property to change the color of the text to XYZ 29.2948, 25.0275, 21.6991 is called "color". The color property can be set on classes, ids or directly on the HTML element.

This example shows how text in the color `rgb(180, 122, 122)` looks like.

```
.text, #text, p{  
    color:rgb(180, 122, 122)  
}
```

If you want to add a text shadow in that color use the text-shadow property, you can generate a text shadow directly with our [CSS Text Shadow Generator](#).

Here you see how black text with a 4 pixel rgb(180, 122, 122) colored shadow looks like.

```
.shadow{ text-shadow: 4px 4px 2px rgb(180, 122, 122) }
```

Border

The CSS property to change the border of an element to XYZ 29.2948, 25.0275, 21.6991 is called "border". The border property can be set on classes, ids or directly on the HTML element.

This example shows the color as border, it can be applied via the CSS property "border" or "border-color".

```
.border, #border, table{ border:4px solid rgb(180, 122, 122) }
```


If only the border color should be changed use the property `border-color`.

```
.border{ border-color:rgb(180, 122, 122) }
```

If you want to add a box shadow in that color use:

Here you see how a box with a 4 pixel `rgb(180, 122, 122)` colored shadow looks like.

```
.boxshadow{ -moz-box-shadow:4px 4px 4px  
4px rgb(180, 122, 122); -webkit-box-  
shadow:4px 4px 4px 4px rgb(180, 122, 122);  
box-shadow:4px 4px 4px 4px rgb(180, 122,  
122) }
```

Background

The CSS property to change the background color of an element to XYZ 29.2948, 25.0275, 21.6991 is called "background". The background property can be set on classes, ids or directly on the HTML element.

```
.background, #background, body{  
background: rgb(180, 122, 122) }
```

If only the background color should be changed can be used:

```
.background{ background-color: rgb(180,  
122, 122) }
```

This example shows the color as background, it is applied via the CSS property "background".

To optimize and compress your CSS code, you can use our [online CSS compressor and optimizer](#) based on csstidy. If you want to create a linear or radial gradient as background or border, check our [CSS Gradient Generator](#).

Hey! You found this booklet interesting? Support Converting Colors with the new Membership Option!

The pro membership hides all ads, plus gives you double the colors in the color bucket, and more awesome pro features!

[Learn more, Memberships starting at \\$2.50/m!](#)

**Follow me
on Twitter!**

@ConvertingColor