

Converting Colors

XYZ(29.3889, 28.7800, 26.0524)

Have a look what the booklet for
XYZ(29.3889, 28.7800, 26.0524)
contains.

XYZ(29.4844, 28.8502, 26.2050)	3
<i>Conversions</i>	4
<i>Details</i>	6
<i>Harmonies</i>	12
<i>Previews</i>	24
<i>Color Blindness Simulation</i>	28
<i>CSS Examples</i>	31

Color

**XYZ(29.4844, 28.8502,
26.2050)**

Conversions

Conversions Part 1

Format	Color
Hex	A68D85
RGB	166, 141, 133
RGB Percent	65%, 55%, 52%
CMY	0.3490, 0.4470, 0.4784
CMYK	0.00, 0.15, 0.20, 0.35
HSL	15°, 16%, 59%
HSV	15°, 20%, 65%
XYZ	29.4844, 28.8502, 26.2050
YIQ	147.5630, 17.4680, 2.8120

Conversions

Conversions Part 2

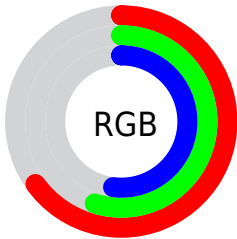
Format	Color
R _Y B	166, 144, 133
Decimal	10915205
CIE Lab	60.65, 8.09, 7.75
CIE LCh	61, 11.200, 43.778
Yxy	28.8502, 0.3488, 0.3413
Android (android.graphics.Color)	4289105285 (0xFFA68D85)
YUV	147.5630, -7.1796, 16.1692
Hunter-Lab	53.7124, 3.9875, 8.6725

Details

The XYZ color **29.4844, 28.8502, 26.2050** is a dark color, and the websafe version is hex **999999**. A complement of this color would be **28.7825, 32.1927, 40.7734**, and the grayscale version is **27.9909, 29.4486, 32.0695**.

A 20% lighter version of the original color is **58.1968, 57.9475, 54.5721**, and **12.2807, 11.6997, 9.9985** is the 20% darker color. If you saturate the color by 10%, you get **26.6771, 24.9281, 20.0512**, and if you desaturate by 10%, it is **32.6851, 33.2685, 33.3849**.

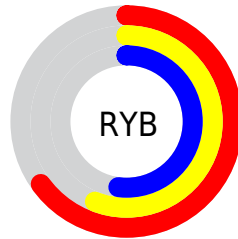
Distribution



Red (65%)

Green (55%)

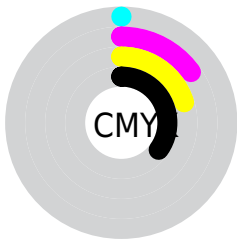
Blue (52%)



Red (65%)

Yellow (56%)

Blue (52%)

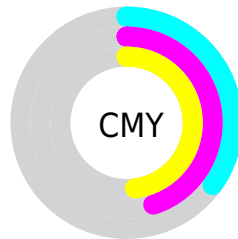


Cyan (0%)

Magenta (15%)

Yellow (20%)

Black (35%)



Cyan (35%)

Magenta (45%)

Yellow (48%)

Brightness & Saturation Gradients

These gradients show how the XYZ color 29.4844, 28.8502, 26.2050 changes by changing the brightness by 10 percent. The first figure shows a shift by +10% for each color and the second figure -10%.

Similar to the brightness gradients but the following saturation gradients show a change of the XYZ color 29.4844, 28.8502, 26.2050 by changing the saturation by 10% instead.

■ 29.4844, 28.8502,
26.2050

■ 29.4844, 28.8502,
26.2050

291.4468,
296.5075, 297.4244

■ 19.5937, 18.9675,
16.7499

■ 58.2381, 57.8390,
54.5936

■ 12.2066, 11.6468,
9.8963

■ 77.8317, 77.7139,
74.3642

■ 6.9577, 6.5037,
5.2255

■ 101.3904,
101.6884, 98.4105

■ 3.4818, 3.1537,
2.3192

129.2795,
130.1468, 127.1508

■ 1.4134, 1.2125,
0.7419

161.8643,
163.4735, 161.0038

■ 0.2657, 0.0719,
0.0000

199.5103,

■ 0.0000, 0.0000,

202.0529, 200.3881

0.0000

242.5826,
246.2694, 245.7221

■ 29.4844, 28.8502,
26.2050

■ 29.4844, 28.8502,
26.2050

■ 26.6771, 24.9281,
20.0512

■ 32.6851, 33.2685,
33.3849

■ 24.2454, 21.4808,
14.8745

■ 36.2914, 38.1955,
41.6330

■ 22.1734, 18.4913,
10.6249

■ 40.3179, 43.6485,
50.9914

■ 20.4433, 15.9397,
7.2469

■ 44.7780, 49.6423,
61.4994

■ 19.0356, 13.8050,
4.6791

■ 49.6840, 56.1914,
73.1941

■ 17.9287, 12.0642,
2.8521

■ 55.0482, 63.3098,
86.1113

■ 17.0980, 10.6917,
1.6847

■ 60.8822, 71.0109,
100.2850

■ 16.4998, 9.6529,
0.9993

■ 65.4085, 78.5921,
106.3301

■ 16.4935, 9.6421,
0.9918

■ 69.2724, 86.3199,
107.6181

Harmonies

Analogous

The Analogous color harmony consists of three colors that are next to each other on the color wheel.



30.2198, 28.8502, 29.5490



29.4844, 28.8502, 26.2050



28.2077, 28.8502, 24.3515

Triad

The Triadic color harmony groups three colors that are evenly spaced from another and form a triangle on the color wheel.



29.4844, 28.8502, 26.2050



24.8298, 28.8502, 29.2343



28.0908, 28.8502, 39.8256

Complementary

The Complementary color scheme is a pair of colors which are on the opposite of each other on the color wheel.



29.4844, 28.8502, 26.2050



28.7825, 32.1927, 40.7734

Split Complementary

Split-complementary colors differ from the complementary color scheme. The scheme consists of three colors, the original color and two neighbors of the complement color.



26.6496, 28.8502, 39.7224



29.4844, 28.8502, 26.2050



24.8010, 28.8502, 33.3537

Square

The Square scheme is like the rectangle color scheme, but the four colors are evenly spaced on the color wheel.



29.4844, 28.8502, 26.2050



25.5368, 28.8502, 25.9922



25.4567, 28.8502, 37.2689



29.3962, 28.8502, 37.5394

Rectangle

The Rectangle color scheme consists of four colors that form a rectangle on the color wheel.



29.4844, 28.8502, 26.2050



27.2379, 28.8502, 24.0987



25.4567, 28.8502, 37.2689



27.6054, 28.8502, 40.0750

Sweetspot

The Sweet Spot groups the original color and five complimentary colors.



29.4852, 28.8515, 26.2056



61.6979, 63.6375, 65.9980



30.3111, 27.3614, 36.1673



13.7178, 14.1190, 14.5660



80.6108, 84.8088, 92.3568



14.7206, 15.4872, 16.8656

Same Dimension

The Same Dimension uses a secret algorithm to generate beautiful new colors.



29.4852, 28.8515, 26.2056



51.0985, 49.0013, 42.2336



32.0506, 33.9824, 27.0608



7.6734, 7.8268, 7.8956



12.8216, 7.5404, 0.7797



0.3504, 0.2604, 0.0318

Inverse Universe

The Inverse Universe completely reimagines the original color for something new.



28.7825, 32.1927, 40.7734



49.5776, 56.2167, 73.7132



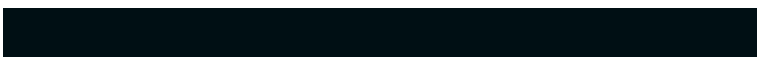
26.1994, 27.0267, 39.9124



7.5911, 8.2192, 9.6047



11.1350, 13.7302, 30.0388



0.3071, 0.4065, 0.7429

Previews

White Background



This preview shows how the XYZ color 29.4844, 28.8502, 26.2050 looks on a white background.

Color Contrast Check

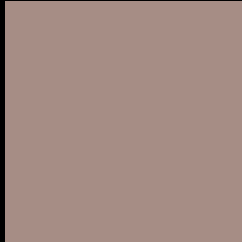
Large Text (above 18pt) WCAG AA ✓ Pass

Any Text WCAG AA × Fail

Large Text (above 18pt) WCAG AAA × Fail

Any Text WCAG AAA × Fail

Black Background



This preview shows how the XYZ color 29.4844, 28.8502, 26.2050 looks on a black background.

Color Contrast Check

Large Text (above 18pt) WCAG AA ✓ Pass

Any Text WCAG AA ✓ Pass

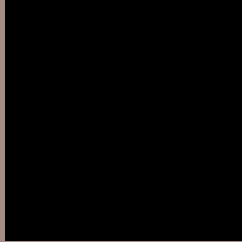
Large Text (above 18pt) WCAG AAA ✓ Pass

Any Text WCAG AAA × Fail

If you want to check with other color combinations, try the [Color Contrast Checker](#).

XYZ 29.4844, 28.8502, 26.2050

Background



This preview shows how black text looks on a background with the XYZ color 29.4844, 28.8502, 26.2050.



This preview shows how white text looks on a background with the XYZ color 29.4844, 28.8502,

Color Blindness Simulation

Color vision deficiency is a very complex topic, and I could not describe the different causes any better than Wikipedia does, so if you want to learn more, you should check out their [article about color blindness](#).

Dichromacy



Original Color

29.4844, 28.8502, 26.2050

Protanopia

27.6717, 29.0107, 27.4337

Deuteranopia

29.4844, 28.8502, 26.2050



Tritanopia

30.8059, 28.9600, 32.4000

Trichromacy



Original Color

29.4844, 28.8502, 26.2050

Protanomaly

28.2511, 28.8639, 27.0040

Deuteranomaly

29.4844, 28.8502, 26.2050

Tritanomaly

30.2724, 28.9548, 29.9799

Monochromacy



Original Color

29.4844, 28.8502, 26.2050

Achromatopsia

28.1479, 29.6138, 32.2495

Achromatomaly

28.6009, 29.2025, 30.1158

CSS Examples

Text

The CSS property to change the color of the text to XYZ 29.4844, 28.8502, 26.2050 is called "color". The color property can be set on classes, ids or directly on the HTML element.

This example shows how text in the color `rgb(166, 141, 133)` looks like.

```
.text, #text, p{  
    color:rgb(166, 141, 133)  
}
```

If you want to add a text shadow in that color use the text-shadow property, you can generate a text shadow directly with our [CSS Text Shadow Generator](#).

Here you see how black text with a 4 pixel rgb(166, 141, 133) colored shadow looks like.

```
.shadow{ text-shadow: 4px 4px 2px rgb(166, 141, 133) }
```

Border

The CSS property to change the border of an element to XYZ 29.4844, 28.8502, 26.2050 is called "border". The border property can be set on classes, ids or directly on the HTML element.

This example shows the color as border, it can be applied via the CSS property "border" or "border-color".

```
.border, #border, table{ border:4px solid rgb(166, 141, 133) }
```


If only the border color should be changed use the property `border-color`.

```
.border{ border-color:rgb(166, 141, 133) }
```

If you want to add a box shadow in that color use:

Here you see how a box with a 4 pixel `rgb(166, 141, 133)` colored shadow looks like.

```
.boxshadow{ -moz-box-shadow:4px 4px 4px  
4px rgb(166, 141, 133); -webkit-box-  
shadow:4px 4px 4px 4px rgb(166, 141, 133);  
box-shadow:4px 4px 4px 4px rgb(166, 141,  
133) }
```

Background

The CSS property to change the background color of an element to XYZ 29.4844, 28.8502, 26.2050 is called "background". The background property can be set on classes, ids or directly on the HTML element.

```
.background, #background, body{  
background: rgb(166, 141, 133) }
```

If only the background color should be changed can be used:

```
.background{ background-color: rgb(166,  
141, 133) }
```

This example shows the color as background, it is applied via the CSS property "background".

To optimize and compress your CSS code, you can use our [online CSS compressor and optimizer](#) based on csstidy. If you want to create a linear or radial gradient as background or border, check our [CSS Gradient Generator](#).

Hey! You found this booklet interesting? Support Converting Colors with the new Membership Option!

The pro membership hides all ads, plus gives you double the colors in the color bucket, and more awesome pro features!

[Learn more, Memberships starting at \\$2.50/m!](#)

**Follow me
on Twitter!**

@ConvertingColor