

Converting Colors

XYZ(29.4286, 27.5343, 14.5679)

Have a look what the booklet for
XYZ(29.4286, 27.5343, 14.5679)
contains.

XYZ(29.4130, 27.5797, 14.5997)	3
<i>Conversions</i>	4
<i>Details</i>	6
<i>Harmonies</i>	12
<i>Previews</i>	24
<i>Color Blindness Simulation</i>	28
<i>CSS Examples</i>	31

Color

**XYZ(29.4130, 27.5797,
14.5997)**

Conversions

Conversions Part 1

Format	Color
Hex	B4865F
RGB	180, 134, 95
RGB Percent	71%, 53%, 37%
CMY	0.2941, 0.4745, 0.6274
CMYK	0.00, 0.26, 0.47, 0.29
HSL	28°, 36%, 54%
HSV	28°, 47%, 71%
XYZ	29.4130, 27.5797, 14.5997
YIQ	143.3080, 39.9350, -2.3770

Conversions

Conversions Part 2

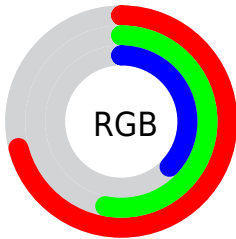
Format	Color
RYB	180, 167, 95
Decimal	11830879
CIELab	59.51, 12.74, 27.82
CIELCh	60, 30.595, 65.401
Yxy	27.5797, 0.4108, 0.3852
Android (android.graphics.Color)	4290020959 (0xFFB4865F)
YUV	143.3080, -23.8158, 32.1789
Hunter-Lab	52.5164, 8.0693, 20.2787

Details

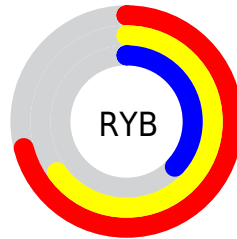
The XYZ color **29.4130, 27.5797, 14.5997** is a dark color, and the websafe version is hex **CC9966**. A complement of this color would be **22.4820, 24.7769, 46.7773**, and the grayscale version is **26.3132, 27.6835, 30.1474**.

A 20% lighter version of the original color is **58.2185, 55.7931, 34.8948**, and **12.1613, 10.9140, 4.2620** is the 20% darker color. If you saturate the color by 10%, you get **27.4028, 24.7208, 10.3488**, and if you desaturate by 10%, it is **31.7377, 30.7649, 19.8887**.

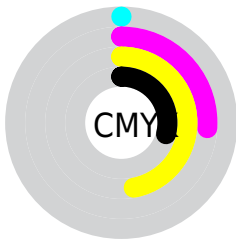
Distribution



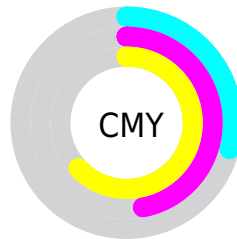
- Red (71%)
- Green (53%)
- Blue (37%)



- Red (71%)
- Yellow (65%)
- Blue (37%)



- Cyan (0%)
- Magenta (26%)
- Yellow (47%)
- Black (29%)





- Cyan (29%)
- Magenta (47%)
- Yellow (63%)

Brightness & Saturation Gradients


These gradients show how the XYZ color 29.4130, 27.5797, 14.5997 changes by changing the brightness by 10 percent. The first figure shows a shift by +10% for each color and the second figure -10%.


Similar to the brightness gradients but the following saturation gradients show a change of the XYZ color 29.4130, 27.5797, 14.5997 by changing the saturation by 10% instead.


 29.4130, 27.5797,
14.5997


 29.4130, 27.5797,
14.5997


291.1178,
290.4531, 232.4871


 19.5393, 18.0091,
8.3954


 58.1256, 55.8127,
34.8817

 12.1669, 10.9565,
4.2576


 77.6953, 75.2439,
49.7965

 6.9305, 6.0376,
1.7677


 101.2277, 98.7307,
68.4520

 3.4646, 2.8680,
0.4065

 129.0882,
126.6575, 91.2665

 1.4040, 1.0632,
0.0000

161.6421,
159.4088, 118.6588

 0.2590, 0.0000,
0.0000

199.2547,

 0.0000, 0.0000,

197.3689, 151.0473

0.0000

242.2915,
240.9222, 188.8505

■ 29.4130, 27.5797,
14.5997

■ 29.4130, 27.5797,
14.5997

■ 27.4028, 24.7208,
10.3488

■ 31.7377, 30.7649,
19.8887

■ 25.6884, 22.1723,
7.0637

■ 34.3900, 34.2837,
26.2781

■ 24.2522, 19.9226,
4.6652

■ 37.3845, 38.1478,
33.8272

■ 23.0731, 17.9574,
3.0607

■ 40.7345, 42.3674,
42.5907

■ 22.1221, 16.2591,
2.1160

■ 44.4523, 46.9520,
52.6194

■ 21.8848, 15.8283,
1.9017

■ 48.5497, 51.9107,
63.9616

■ 53.0379, 57.2525,
76.6629

■ 57.9277, 62.9857,
90.7666

■ 62.9052, 68.9892,
104.6085

Harmonies

Analogous

The Analogous color harmony consists of three colors that are next to each other on the color wheel.



32.7131, 27.5797, 19.3589



29.4130, 27.5797, 14.5997



25.5240, 27.5797, 13.4986

Triad

The Triadic color harmony groups three colors that are evenly spaced from another and form a triangle on the color wheel.



29.4130, 27.5797, 14.5997



19.5212, 27.5797, 32.0667



30.7336, 27.5797, 50.8043

Complementary

The Complementary color scheme is a pair of colors which are on the opposite of each other on the color wheel.



29.4130, 27.5797, 14.5997



22.4820, 24.7769, 46.7773

Split Complementary

Split-complementary colors differ from the complementary color scheme. The scheme consists of three colors, the original color and two neighbors of the complement color.



26.9156, 27.5797, 56.4237



29.4130, 27.5797, 14.5997



20.6377, 27.5797, 44.0398

Square

The Square scheme is like the rectangle color scheme, but the four colors are evenly spaced on the color wheel.



29.4130, 27.5797, 14.5997



20.0502, 27.5797, 22.0504



23.2552, 27.5797, 53.6864



33.5262, 27.5797, 39.7332

Rectangle

The Rectangle color scheme consists of four colors that form a rectangle on the color wheel.



29.4130, 27.5797, 14.5997



23.1688, 27.5797, 14.6772



23.2552, 27.5797, 53.6864



29.5143, 27.5797, 53.5023

Sweetspot

The Sweet Spot groups the original color and five complimentary colors.



29.4137, 27.5810, 14.6002



69.5292, 71.3836, 65.8396



27.7784, 19.8334, 27.8572



14.7576, 15.0859, 13.5313



86.6293, 91.1408, 99.2523



17.0014, 17.8868, 19.4787

Same Dimension

The Same Dimension uses a secret algorithm to generate beautiful new colors.



29.4137, 27.5810, 14.6002



49.4346, 44.4565, 18.2561



36.3642, 41.4821, 16.9171



8.8069, 9.1264, 8.9499



15.3400, 11.1786, 1.3492



0.5412, 0.4688, 0.0620

Inverse Universe

The Inverse Universe completely reimagines the original color for something new.



22.4820, 24.7769, 46.7773



35.2802, 38.7134, 83.9076



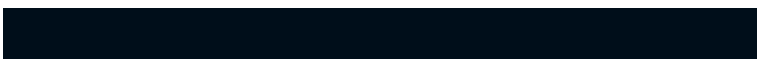
17.4433, 14.6996, 45.0977



8.4101, 8.9665, 10.7938



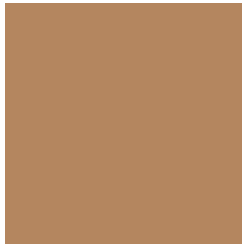
8.8272, 8.4547, 31.3037



0.3353, 0.3811, 1.0041

Previews

White Background



This preview shows how the XYZ color 29.4130, 27.5797, 14.5997 looks on a white background.

Color Contrast Check

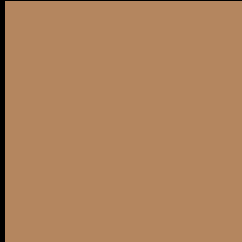
Large Text (above 18pt) WCAG AA ✓ Pass

Any Text WCAG AA × Fail

Large Text (above 18pt) WCAG AAA × Fail

Any Text WCAG AAA × Fail

Black Background



This preview shows how the XYZ color 29.4130, 27.5797, 14.5997 looks on a black background.

Color Contrast Check

Large Text (above 18pt) WCAG AA ✓ Pass

Any Text WCAG AA ✓ Pass

Large Text (above 18pt) WCAG AAA ✓ Pass

Any Text WCAG AAA × Fail

If you want to check with other color combinations, try the [Color Contrast Checker](#).

XYZ 29.4130, 27.5797, 14.5997

Background



This preview shows how black text looks on a background with the XYZ color 29.4130, 27.5797, 14.5997.



This preview shows how white text looks on a background with the XYZ color 29.4130, 27.5797,

Color Blindness Simulation

Color vision deficiency is a very complex topic, and I could not describe the different causes any better than Wikipedia does, so if you want to learn more, you should check out their [article about color blindness](#).

Dichromacy



Original Color

29.4130, 27.5797, 14.5997

Protanopia

25.7430, 27.8159, 15.8166

Deuteranopia

27.9793, 27.4701, 14.4173



Tritanopia

32.0738, 27.4637, 27.6553

Trichromacy



Original Color

29.4130, 27.5797, 14.5997

Protanomaly

26.8925, 27.5305, 15.4518

Deuteranomaly

28.5037, 27.5304, 14.4013

Tritanomaly

31.0239, 27.4377, 22.0732

Monochromacy



Original Color

29.4130, 27.5797, 14.5997

Achromatopsia

26.1081, 27.4677, 29.9124

Achromatomaly

26.8543, 27.3304, 23.5986

CSS Examples

Text

The CSS property to change the color of the text to XYZ 29.4130, 27.5797, 14.5997 is called "color". The color property can be set on classes, ids or directly on the HTML element.

This example shows how text in the color `rgb(180, 134, 95)` looks like.

```
.text, #text, p{  
    color:rgb(180, 134, 95)  
}
```

If you want to add a text shadow in that color use the text-shadow property, you can generate a text shadow directly with our [CSS Text Shadow Generator](#).

Here you see how black text with a 4 pixel rgb(180, 134, 95) colored shadow looks like.

```
.shadow{ text-shadow: 4px 4px 2px rgb(180, 134, 95) }
```

Border

The CSS property to change the border of an element to XYZ 29.4130, 27.5797, 14.5997 is called "border". The border property can be set on classes, ids or directly on the HTML element.

This example shows the color as border, it can be applied via the CSS property "border" or "border-color".

```
.border, #border, table{ border:4px solid rgb(180, 134, 95) }
```


If only the border color should be changed use the property `border-color`.

```
.border{ border-color:rgb(180, 134, 95) }
```

If you want to add a box shadow in that color use:

Here you see how a box with a 4 pixel `rgb(180, 134, 95)` colored shadow looks like.

```
.boxshadow{ -moz-box-shadow:4px 4px 4px  
4px rgb(180, 134, 95); -webkit-box-  
shadow:4px 4px 4px 4px rgb(180, 134, 95);  
box-shadow:4px 4px 4px 4px rgb(180, 134,  
95) }
```

Background

The CSS property to change the background color of an element to XYZ 29.4130, 27.5797, 14.5997 is called "background". The background property can be set on classes, ids or directly on the HTML element.

```
.background, #background, body{  
background: rgb(180, 134, 95) }
```

If only the background color should be changed can be used:

```
.background{ background-color: rgb(180,  
134, 95) }
```

This example shows the color as background, it is applied via the CSS property "background".

To optimize and compress your CSS code, you can use our [online CSS compressor and optimizer](#) based on csstidy. If you want to create a linear or radial gradient as background or border, check our [CSS Gradient Generator](#).

Hey! You found this booklet interesting? Support Converting Colors with the new Membership Option!

The pro membership hides all ads, plus gives you double the colors in the color bucket, and more awesome pro features!

[Learn more, Memberships starting at \\$2.50/m!](#)

**Follow me
on Twitter!**

@ConvertingColor