

Converting Colors

XYZ(29.5044, 28.1444, 18.5297)

Have a look what the booklet for
XYZ(29.5044, 28.1444, 18.5297)
contains.

XYZ(29.4393, 28.1311, 18.6301)	3
<i>Conversions</i>	4
<i>Details</i>	6
<i>Harmonies</i>	12
<i>Previews</i>	24
<i>Color Blindness Simulation</i>	28
<i>CSS Examples</i>	31

Color

**XYZ(29.4393, 28.1311,
18.6301)**

Conversions

Conversions Part 1

Format	Color
Hex	AF896E
RGB	175, 137, 110
RGB Percent	69%, 54%, 43%
CMY	0.3137, 0.4627, 0.5686
CMYK	0.00, 0.22, 0.37, 0.31
HSL	25°, 29%, 56%
HSV	25°, 37%, 69%
XYZ	29.4393, 28.1311, 18.6301
YIQ	145.2840, 31.3150, -0.3410

Conversions

Conversions Part 2

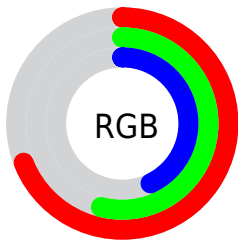
Format	Color
RYB	175, 156, 110
Decimal	11503982
CIELab	60.01, 10.68, 20.01
CIELCh	60, 22.687, 61.911
Yxy	28.1311, 0.3863, 0.3692
Android (android.graphics.Color)	4289694062 (0xFFAF896E)
YUV	145.2840, -17.3950, 26.0609
Hunter-Lab	53.0388, 6.2591, 16.3013

Details

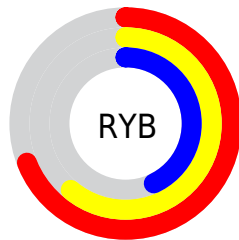
The XYZ color **29.4393, 28.1311, 18.6301** is a dark color, and the websafe version is hex **CC9966**. A complement of this color would be **24.7577, 27.5888, 44.5776**, and the grayscale version is **27.0894, 28.5002, 31.0367**.

A 20% lighter version of the original color is **58.2138, 56.5914, 42.0374**, and **12.1629, 11.2291, 6.0838** is the 20% darker color. If you saturate the color by 10%, you get **27.1933, 25.0162, 13.6359**, and if you desaturate by 10%, it is **32.0129, 31.5998, 24.6625**.

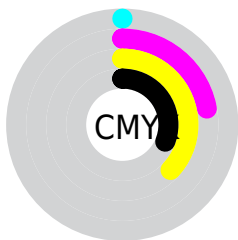
Distribution



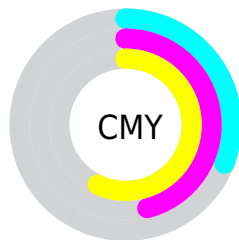
- Red (69%)
- Green (54%)
- Blue (43%)



- Red (69%)
- Yellow (61%)
- Blue (43%)



- Cyan (0%)
- Magenta (22%)
- Yellow (37%)
- Black (31%)





- Cyan (31%)
- Magenta (46%)
- Yellow (57%)

Brightness & Saturation Gradients


These gradients show how the XYZ color 29.4393, 28.1311, 18.6301 changes by changing the brightness by 10 percent. The first figure shows a shift by +10% for each color and the second figure -10%.


Similar to the brightness gradients but the following saturation gradients show a change of the XYZ color 29.4393, 28.1311, 18.6301 by changing the saturation by 10% instead.


 29.4393, 28.1311,
18.6301


 29.4393, 28.1311,
18.6301


291.2390,
293.0928, 256.7533


 19.5593, 18.4245,
11.2292


 58.1671, 56.6937,
41.9365


 12.1815, 11.2552,
6.1051


 77.7456, 76.3185,
58.6790

 6.9405, 6.2388,
2.8393


 101.2877,
100.0181, 79.3725

 3.4709, 2.9908,
1.0132

 129.1587,
128.1770, 104.4355

 1.4074, 1.1269,
0.0000

161.7240,
161.1795, 134.2865

 0.2615, 0.0008,
0.0000

199.3489,

 0.0000, 0.0000,

199.4100, 169.3442

0.0000

242.3988,
243.2530, 210.0269

■ 29.4393, 28.1311,
18.6301

■ 29.4393, 28.1311,
18.6301

■ 27.1933, 25.0162,
13.6359

■ 32.0129, 31.5998,
24.6625

■ 25.2576, 22.2389,
9.6182

■ 34.9257, 35.4296,
31.7864

■ 23.6169, 19.7877,
6.5115

■ 38.1915, 39.6327,
40.0535

■ 22.2529, 17.6486,
4.2413

■ 41.8226, 44.2196,
49.5116

■ 21.1452, 15.8065,
2.7211

■ 45.8306, 49.2000,
60.2059

■ 20.2653, 14.2425,
1.8246

■ 50.2267, 54.5836,
72.1792

■ 20.0422, 13.8401,
1.6151

■ 55.0214, 60.3795,
85.4721

■ 60.2249, 66.5967,
100.1236

■ 63.7682, 72.4122,
105.2237

Harmonies

Analogous

The Analogous color harmony consists of three colors that are next to each other on the color wheel.



31.7355, 28.1311, 22.9671



29.4393, 28.1311, 18.6301



26.5530, 28.1311, 17.3232

Triad

The Triadic color harmony groups three colors that are evenly spaced from another and form a triangle on the color wheel.



29.4393, 28.1311, 18.6301



21.5616, 28.1311, 31.1635



29.7827, 28.1311, 46.2154

Complementary

The Complementary color scheme is a pair of colors which are on the opposite of each other on the color wheel.



29.4393, 28.1311, 18.6301



24.7577, 27.5888, 44.5776

Split Complementary

Split-complementary colors differ from the complementary color scheme. The scheme consists of three colors, the original color and two neighbors of the complement color.



26.9234, 28.1311, 49.4385



29.4393, 28.1311, 18.6301



22.2944, 28.1311, 39.8319

Square

The Square scheme is like the rectangle color scheme, but the four colors are evenly spaced on the color wheel.



29.4393, 28.1311, 18.6301



22.1307, 28.1311, 23.7338



24.2068, 28.1311, 46.9167



31.9436, 28.1311, 38.7472

Rectangle

The Rectangle color scheme consists of four colors that form a rectangle on the color wheel.



29.4393, 28.1311, 18.6301



24.7181, 28.1311, 18.1148



24.2068, 28.1311, 46.9167



28.8646, 28.1311, 47.8861

Sweetspot

The Sweet Spot groups the original color and five complimentary colors.



29.4400, 28.1324, 18.6307



65.9546, 67.8520, 65.4887



28.6800, 22.4360, 31.2529



14.4867, 14.8590, 14.1187



84.5950, 89.0005, 96.9216



16.2198, 17.0645, 18.5832

Same Dimension

The Same Dimension uses a secret algorithm to generate beautiful new colors.



29.4400, 28.1324, 18.6307



49.2179, 45.5285, 25.5364



34.5888, 38.4299, 20.3469



8.2684, 8.5415, 8.4263



14.4108, 10.0271, 1.1759



0.4557, 0.3885, 0.0510

Inverse Universe

The Inverse Universe completely reimagines the original color for something new.



24.7577, 27.5888, 44.5776



39.5388, 44.3879, 79.1207



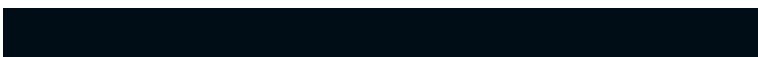
20.4717, 19.0169, 43.1489



7.9532, 8.5057, 10.1753



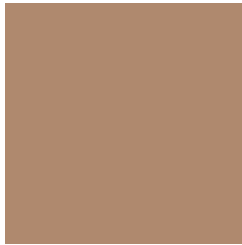
9.0266, 9.1871, 30.3420



0.3034, 0.3602, 0.8615

Previews

White Background



This preview shows how the XYZ color 29.4393, 28.1311, 18.6301 looks on a white background.

Color Contrast Check

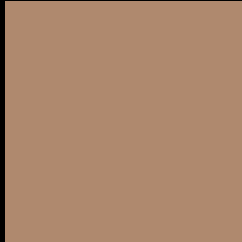
Large Text (above 18pt) WCAG AA ✓ Pass

Any Text WCAG AA × Fail

Large Text (above 18pt) WCAG AAA × Fail

Any Text WCAG AAA × Fail

Black Background



This preview shows how the XYZ color 29.4393, 28.1311, 18.6301 looks on a black background.

Color Contrast Check

Large Text (above 18pt) WCAG AA ✓ Pass

Any Text WCAG AA ✓ Pass

Large Text (above 18pt) WCAG AAA ✓ Pass

Any Text WCAG AAA × Fail

If you want to check with other color combinations, try the [Color Contrast Checker](#).

XYZ 29.4393, 28.1311, 18.6301

Background



This preview shows how black text looks on a background with the XYZ color 29.4393, 28.1311, 18.6301.



This preview shows how white text looks on a background with the XYZ color 29.4393, 28.1311,

Color Blindness Simulation

Color vision deficiency is a very complex topic, and I could not describe the different causes any better than Wikipedia does, so if you want to learn more, you should check out their [article about color blindness](#).

Dichromacy



Original Color

29.4393, 28.1311, 18.6301

Protanopia

26.4325, 28.3131, 19.6946

Deuteranopia

28.6247, 28.1371, 18.6742



Tritanopia

31.7056, 28.2232, 29.7632

Trichromacy



Original Color

29.4393, 28.1311, 18.6301

Protanomaly

27.4979, 28.1972, 19.3225

Deuteranomaly

28.9162, 28.0734, 18.6465

Tritanomaly

30.7533, 28.0360, 25.2633

Monochromacy



Original Color

29.4393, 28.1311, 18.6301

Achromatopsia

26.9133, 28.3149, 30.8349

Achromatomaly

27.5482, 28.0799, 25.7978

CSS Examples

Text

The CSS property to change the color of the text to XYZ 29.4393, 28.1311, 18.6301 is called "color". The color property can be set on classes, ids or directly on the HTML element.

This example shows how text in the color `rgb(175, 137, 110)` looks like.

```
.text, #text, p{  
    color:rgb(175, 137, 110)  
}
```

If you want to add a text shadow in that color use the text-shadow property, you can generate a text shadow directly with our [CSS Text Shadow Generator](#).

Here you see how black text with a 4 pixel rgb(175, 137, 110) colored shadow looks like.

```
.shadow{ text-shadow: 4px 4px 2px rgb(175, 137, 110) }
```

Border

The CSS property to change the border of an element to XYZ 29.4393, 28.1311, 18.6301 is called "border". The border property can be set on classes, ids or directly on the HTML element.

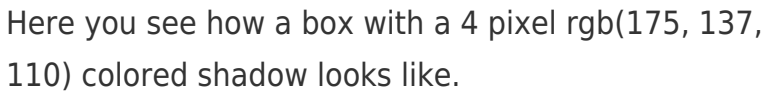
This example shows the color as border, it can be applied via the CSS property "border" or "border-color".

```
.border, #border, table{ border:4px solid rgb(175, 137, 110) }
```


If only the border color should be changed use the property `border-color`.

```
.border{ border-color:rgb(175, 137, 110) }
```

If you want to add a box shadow in that color use:



Here you see how a box with a 4 pixel `rgb(175, 137, 110)` colored shadow looks like.

```
.boxshadow{ -moz-box-shadow:4px 4px 4px 4px rgb(175, 137, 110); -webkit-box-shadow:4px 4px 4px 4px rgb(175, 137, 110); box-shadow:4px 4px 4px 4px rgb(175, 137, 110) }
```

Background

The CSS property to change the background color of an element to XYZ 29.4393, 28.1311, 18.6301 is called "background". The background property can be set on classes, ids or directly on the HTML element.

```
.background, #background, body{  
background: rgb(175, 137, 110) }
```

If only the background color should be changed can be used:

```
.background{ background-color: rgb(175,  
137, 110) }
```

This example shows the color as background, it is applied via the CSS property "background".

To optimize and compress your CSS code, you can use our [online CSS compressor and optimizer](#) based on csstidy. If you want to create a linear or radial gradient as background or border, check our [CSS Gradient Generator](#).

Hey! You found this booklet interesting? Support Converting Colors with the new Membership Option!

The pro membership hides all ads, plus gives you double the colors in the color bucket, and more awesome pro features!

[Learn more, Memberships starting at \\$2.50/m!](#)

**Follow me
on Twitter!**

@ConvertingColor