

# Converting Colors

XYZ(29.5745, 26.2752, 15.8318)

Have a look what the booklet for  
XYZ(29.5745, 26.2752, 15.8318)  
contains.

<b>XYZ(29.4668, 26.1856, 15.8132)</b> .....	3
<b><i>Conversions</i></b> .....	4
<b><i>Details</i></b> .....	6
<b><i>Harmonies</i></b> .....	12
<b><i>Previews</i></b> .....	24
<b><i>Color Blindness Simulation</i></b> .....	28
<b><i>CSS Examples</i></b> .....	31

# Color

**XYZ(29.4668, 26.1856,  
15.8132)**

# Conversions

## Conversions Part 1

<b>Format</b>	<b>Color</b>
Hex	B77F65
RGB	183, 127, 101
RGB Percent	72%, 50%, 40%
CMY	0.2824, 0.5019, 0.6039
CMYK	0.00, 0.31, 0.45, 0.28
HSL	19°, 36%, 56%
HSV	19°, 45%, 72%
XYZ	29.4668, 26.1856, 15.8132
YIQ	140.7800, 41.7220, 3.7860

# Conversions

## Conversions Part 2

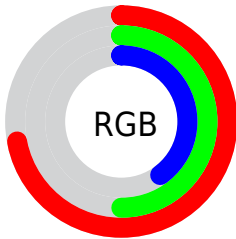
<b>Format</b>	<b>Color</b>
<b>R<sub>YB</sub></b>	183, 139, 101
Decimal	12025701
CIE Lab	58.21, 18.52, 22.83
CIE LCh	58, 29.394, 50.944
Yxy	26.1856, 0.4123, 0.3664
Android (android.graphics.Color)	4290215781 (0xFFB77F65)
YUV	140.7800, -19.6115, 37.0269
Hunter-Lab	51.1719, 13.2366, 17.4984

# Details

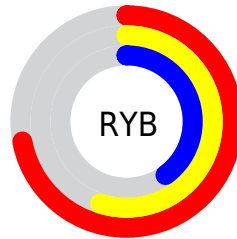
The XYZ color **29.4668, 26.1856, 15.8132** is a dark color, and the websafe version is hex **CC9966**. A complement of this color would be **25.9706, 30.2984, 49.2791**, and the grayscale version is **25.2948, 26.6121, 28.9805**.

A 20% lighter version of the original color is **58.2644, 53.6103, 36.9827**, and **12.2923, 10.3043, 4.8311** is the 20% darker color. If you saturate the color by 10%, you get **27.1531, 22.8368, 11.1001**, and if you desaturate by 10%, it is **32.1817, 30.0172, 21.6455**.

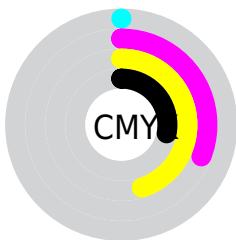
# Distribution



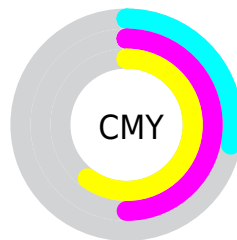
- Red (72%)
- Green (50%)
- Blue (40%)



- Red (72%)
- Yellow (55%)
- Blue (40%)



- Cyan (0%)
- Magenta (31%)
- Yellow (45%)
- Black (28%)



- Cyan (28%)
- Magenta (50%)
- Yellow (60%)

# Brightness & Saturation Gradients

These gradients show how the XYZ color 29.4668, 26.1856, 15.8132 changes by changing the brightness by 10 percent. The first figure shows a shift by +10% for each color and the second figure -10%.

Similar to the brightness gradients but the following saturation gradients show a change of the XYZ color 29.4668, 26.1856, 15.8132 by changing the saturation by 10% instead.



■ 29.4668, 26.1856,  
15.8132

■ 29.4668, 26.1856,  
15.8132

291.3657,  
283.6920, 240.0449

■ 19.5803, 16.9625,  
9.2391

■ 58.2104, 53.5742,  
37.0359

■ 12.1968, 10.2078,  
4.7986

■ 77.7981, 72.5086,  
52.5216

■ 6.9510, 5.5369,  
2.0729

■ 101.3503, 95.4488,  
71.8149

■ 3.4775, 2.5656,  
0.5996

■ 129.2324,  
122.7793, 95.3344

■ 1.4110, 0.9094,  
0.0000

161.8096,  
154.8845, 123.4986

■ 0.2641, 0.0000,  
0.0000

199.4473,

■ 0.0000, 0.0000,

192.1487, 156.7261

0.0000

242.5109,  
234.9564, 195.4353

■ 29.4668, 26.1856,  
15.8132

■ 29.4668, 26.1856,  
15.8132

■ 27.1531, 22.8368,  
11.1001

■ 32.1817, 30.0172,  
21.6455

■ 25.2178, 19.9470,  
7.4316

■ 35.3150, 34.3466,  
28.6619

■ 23.6389, 17.4961,  
4.7264

■ 38.8850, 39.1926,  
36.9241

■ 22.3908, 15.4605,  
2.8902

■ 42.9085, 44.5721,  
46.4891

■ 21.4434, 13.8140,  
1.8090

■ 47.4013, 50.5009,  
57.4102

■ 21.0432, 13.0967,  
1.4188

■ 52.3784, 56.9944,  
69.7379

■ 57.8541, 64.0673,  
83.5199

■ 63.8421, 71.7338,  
98.8018

■ 68.5842, 79.2987,  
106.2992

# Harmonies

## Analogous

The Analogous color harmony consists of three colors that are next to each other on the color wheel.



31.8621, 26.1856, 22.0488



29.4668, 26.1856, 15.8132



25.9843, 26.1856, 13.1762

# Triad

The Triadic color harmony groups three colors that are evenly spaced from another and form a triangle on the color wheel.



29.4668, 26.1856, 15.8132



18.7093, 26.1856, 25.5293



27.4226, 26.1856, 51.0820

# Complementary

The Complementary color scheme is a pair of colors which are on the opposite of each other on the color wheel.



29.4668, 26.1856, 15.8132



25.9706, 30.2984, 49.2791

# Split Complementary

Split-complementary colors differ from the complementary color scheme. The scheme consists of three colors, the original color and two neighbors of the complement color.



23.8242, 26.1856, 52.6516



29.4668, 26.1856, 15.8132



19.0150, 26.1856, 36.1281

# Square

The Square scheme is like the rectangle color scheme, but the four colors are evenly spaced on the color wheel.



29.4668, 26.1856, 15.8132



19.9319, 26.1856, 17.8364



20.8111, 26.1856, 46.6541



30.6057, 26.1856, 42.7711



# Rectangle

The Rectangle color scheme consists of four colors that form a rectangle on the color wheel.



29.4668, 26.1856, 15.8132



23.6086, 26.1856, 13.2436



20.8111, 26.1856, 46.6541



26.2141, 26.1856, 52.4825

# Sweetspot

The Sweet Spot groups the original color and five complimentary colors.



29.4675, 26.1869, 15.8137



70.7355, 71.6637, 68.7012



30.2709, 21.8104, 34.5278



15.2902, 15.3800, 14.3911



88.6918, 93.3107, 101.6153



17.8044, 18.7317, 20.3988



# Same Dimension

The Same Dimension uses a secret algorithm to generate beautiful new colors.



29.4675, 26.1869, 15.8137



48.5988, 40.8534, 19.8172



35.8740, 38.9999, 17.9492



9.2309, 9.4647, 9.4472



14.7355, 9.2473, 1.0083



0.5768, 0.4407, 0.0547



# Inverse Universe

The Inverse Universe completely reimagines the original color for something new.



25.9706, 30.2984, 49.2791



41.4874, 49.1036, 87.5270



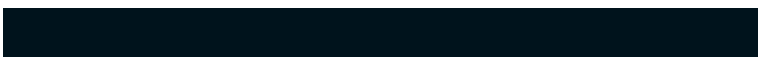
20.1636, 18.6844, 47.3435



9.0200, 9.7172, 11.4796



11.1396, 12.7389, 33.1248



0.4457, 0.5551, 1.1854



# Previews

## White Background



This preview shows how the XYZ color 29.4668, 26.1856, 15.8132 looks on a white background.

## Color Contrast Check

Large Text (above 18pt) WCAG AA ✓ Pass

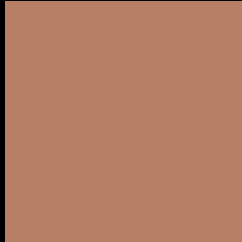
Any Text WCAG AA × Fail

Large Text (above 18pt) WCAG AAA × Fail

Any Text WCAG AAA × Fail



# Black Background



This preview shows how the XYZ color 29.4668, 26.1856, 15.8132 looks on a black background.

## Color Contrast Check

Large Text (above 18pt) WCAG AA ✓ Pass

Any Text WCAG AA ✓ Pass

Large Text (above 18pt) WCAG AAA ✓ Pass

Any Text WCAG AAA × Fail

If you want to check with other color combinations, try the [Color Contrast Checker](#).

**XYZ 29.4668, 26.1856, 15.8132**

## **Background**



This preview shows how black text looks on a background with the XYZ color 29.4668, 26.1856, 15.8132.



This preview shows how white text looks on a background with the XYZ color 29.4668, 26.1856,



# Color Blindness Simulation

Color vision deficiency is a very complex topic, and I could not describe the different causes any better than Wikipedia does, so if you want to learn more, you should check out their [article about color blindness](#).

## Dichromacy



### Original Color

29.4668, 26.1856, 15.8132

### Protanopia

24.6096, 26.3017, 17.6896

### Deuteranopia

26.7617, 26.1858, 15.7005



## Tritanopia

31.4975, 26.2710, 25.2405

# Trichromacy



## Original Color

29.4668, 26.1856, 15.8132

## Protanomaly

26.1141, 26.0292, 17.0124

## Deuteranomaly

27.6501, 26.0369, 15.6249

## Tritanomaly

30.6664, 26.1101, 21.5126

# Monochromacy



## Original Color

29.4668, 26.1856, 15.8132

## Achromatopsia

25.3171, 26.6356, 29.0061

## Achromatomaly

26.2804, 26.1826, 23.4073

# CSS Examples

## Text

The CSS property to change the color of the text to XYZ 29.4668, 26.1856, 15.8132 is called "color". The color property can be set on classes, ids or directly on the HTML element.

This example shows how text in the color `rgb(183, 127, 101)` looks like.

```
.text, #text, p{  
    color:rgb(183, 127, 101)  
}
```

If you want to add a text shadow in that color use the text-shadow property, you can generate a text shadow directly with our [CSS Text Shadow Generator](#).

Here you see how black text with a 4 pixel rgb(183, 127, 101) colored shadow looks like.

```
.shadow{ text-shadow: 4px 4px 2px rgb(183, 127, 101) }
```

## Border

The CSS property to change the border of an element to XYZ 29.4668, 26.1856, 15.8132 is called "border". The border property can be set on classes, ids or directly on the HTML element.

This example shows the color as border, it can be applied via the CSS property "border" or "border-color".

```
.border, #border, table{ border:4px solid rgb(183, 127, 101) }
```



If only the border color should be changed use the property `border-color`.

```
.border{ border-color:rgb(183, 127, 101) }
```

If you want to add a box shadow in that color use:

Here you see how a box with a 4 pixel `rgb(183, 127, 101)` colored shadow looks like.

```
.boxshadow{ -moz-box-shadow:4px 4px 4px  
4px rgb(183, 127, 101); -webkit-box-  
shadow:4px 4px 4px 4px rgb(183, 127, 101);  
box-shadow:4px 4px 4px 4px rgb(183, 127,  
101) }
```

# Background

The CSS property to change the background color of an element to XYZ 29.4668, 26.1856, 15.8132 is called "background". The background property can be set on classes, ids or directly on the HTML element.

```
.background, #background, body{  
background: rgb(183, 127, 101) }
```

If only the background color should be changed can be used:

```
.background{ background-color: rgb(183,  
127, 101) }
```

This example shows the color as background, it is applied via the CSS property "background".

To optimize and compress your CSS code, you can use our [online CSS compressor and optimizer](#) based on csstidy. If you want to create a linear or radial gradient as background or border, check our [CSS Gradient Generator](#).

Hey! You found this booklet interesting? Support Converting Colors with the new Membership Option!

The pro membership hides all ads, plus gives you double the colors in the color bucket, and more awesome pro features!

**[Learn more, Memberships starting at \\$2.50/m!](#)**

**Follow me  
on Twitter!**

@ConvertingColor