

Converting Colors

XYZ(29.7110, 28.2501, 20.0548)

Have a look what the booklet for
XYZ(29.7110, 28.2501, 20.0548)
contains.

XYZ(29.7194, 28.2431, 20.1047)	3
<i>Conversions</i>	4
<i>Details</i>	6
<i>Harmonies</i>	12
<i>Previews</i>	24
<i>Color Blindness Simulation</i>	28
<i>CSS Examples</i>	31

Color

**XYZ(29.7194, 28.2431,
20.1047)**

Conversions

Conversions Part 1

Format	Color
Hex	AF8973
RGB	175, 137, 115
RGB Percent	69%, 54%, 45%
CMY	0.3137, 0.4627, 0.5490
CMYK	0.00, 0.22, 0.34, 0.31
HSL	22°, 27%, 57%
HSV	22°, 34%, 69%
XYZ	29.7194, 28.2431, 20.1047
YIQ	145.8540, 29.7100, 1.2140

Conversions

Conversions Part 2

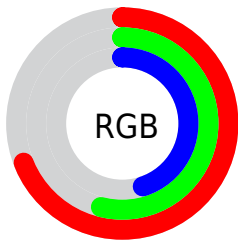
Format	Color
R_{YB}	175, 150, 115
Decimal	11503987
CIE _{Lab}	60.11, 11.32, 17.33
CIE _{LCh}	60, 20.700, 56.858
Yxy	28.2431, 0.3807, 0.3618
Android (android.graphics.Color)	4289694067 (0xFFAF8973)
YUV	145.8540, -15.2110, 25.5610
Hunter-Lab	53.1442, 6.8186, 14.7713

Details

The XYZ color **29.7194, 28.2431, 20.1047** is a dark color, and the websafe version is hex **CC9999**. A complement of this color would be **26.1990, 29.5215, 44.8750**, and the grayscale version is **27.3142, 28.7367, 31.2943**.

A 20% lighter version of the original color is **58.6672, 56.7727, 44.4254**, and **12.3065, 11.2866, 6.8401** is the 20% darker color. If you saturate the color by 10%, you get **27.3113, 24.8883, 14.7966**, and if you desaturate by 10%, it is **32.4820, 32.0007, 26.4748**.

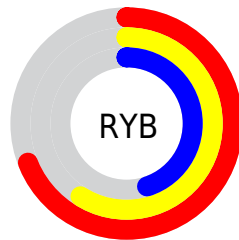
Distribution



Red (69%)

Green (54%)

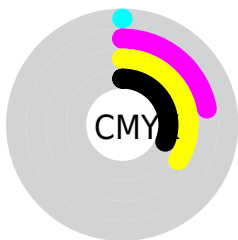
Blue (45%)



Red (69%)

Yellow (59%)

Blue (45%)

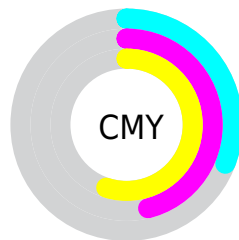


Cyan (0%)

Magenta (22%)

Yellow (34%)

Black (31%)



Cyan (31%)

Magenta (46%)

Yellow (55%)

Brightness & Saturation Gradients

These gradients show how the XYZ color 29.7194, 28.2431, 20.1047 changes by changing the brightness by 10 percent. The first figure shows a shift by +10% for each color and the second figure -10%.

Similar to the brightness gradients but the following saturation gradients show a change of the XYZ color 29.7194, 28.2431, 20.1047 by changing the saturation by 10% instead.

■ 29.7194, 28.2431,
20.1047

■ 29.7194, 28.2431,
20.1047

292.5277,
293.6267, 265.1043

■ 19.7727, 18.5090,
12.2863

■ 58.6078, 56.8723,
44.4539

■ 12.3372, 11.3160,
6.8141

■ 78.2803, 76.5362,
61.8219

■ 7.0476, 6.2798,
3.2694

■ 101.9254,
100.2789, 83.2101

■ 3.5385, 3.0160,
1.2338

129.9084,
128.4846, 109.0371

■ 1.4445, 1.1401,
0.0066

162.5948,
161.5379, 139.7216

■ 0.2876, 0.0119,
0.0000

200.3499,

■ 0.0000, 0.0000,

199.8231, 175.6819

0.0000

243.5391,
243.7245, 217.3366

■ 29.7194, 28.2431,
20.1047

■ 29.7194, 28.2431,
20.1047

■ 27.3113, 24.8883,
14.7966

■ 32.4820, 32.0007,
26.4748

■ 25.2398, 21.9182,
10.4900

■ 35.6116, 36.1705,
33.9593

■ 23.4885, 19.3192,
7.1208

■ 39.1226, 40.7663,
42.6093

■ 22.0389, 17.0753,
4.6170

■ 43.0281, 45.8004,
52.4721

■ 20.8696, 15.1689,
2.8955

■ 47.3404, 51.2842,
63.5925

■ 19.9563, 13.5804,
1.8567

■ 52.0714, 57.2289,
76.0128

■ 19.5227, 12.8009,
1.4419

■ 57.2324, 63.6452,
89.7735

■ 62.8339, 70.5434,
104.9123

■ 65.9396, 76.7547,
105.9475

Harmonies

Analogous

The Analogous color harmony consists of three colors that are next to each other on the color wheel.



31.6377, 28.2431, 24.6343



29.7194, 28.2431, 20.1047



27.1237, 28.2431, 18.3890

Triad

The Triadic color harmony groups three colors that are evenly spaced from another and form a triangle on the color wheel.



29.7194, 28.2431, 20.1047



22.0831, 28.2431, 29.9611



29.2061, 28.2431, 45.6486

Complementary

The Complementary color scheme is a pair of colors which are on the opposite of each other on the color wheel.



29.7194, 28.2431, 20.1047



26.1990, 29.5215, 44.8750

Split Complementary

Split-complementary colors differ from the complementary color scheme. The scheme consists of three colors, the original color and two neighbors of the complement color.



26.5667, 28.2431, 47.6928



29.7194, 28.2431, 20.1047



22.5611, 28.2431, 37.8067

Square

The Square scheme is like the rectangle color scheme, but the four colors are evenly spaced on the color wheel.



29.7194, 28.2431, 20.1047



22.8101, 28.2431, 23.4618



24.1607, 28.2431, 44.6184



31.3280, 28.2431, 39.4145

Rectangle

The Rectangle color scheme consists of four colors that form a rectangle on the color wheel.



29.7194, 28.2431, 20.1047



25.3973, 28.2431, 18.8207



24.1607, 28.2431, 44.6184



28.3451, 28.2431, 46.8887

Sweetspot

The Sweet Spot groups the original color and five complimentary colors.



29.7201, 28.2444, 20.1053



66.2807, 68.0711, 66.9329



29.5599, 23.6756, 33.1491



14.5425, 14.8813, 14.4127



84.5950, 89.0005, 96.9216



16.2198, 17.0645, 18.5832

Same Dimension

The Same Dimension uses a secret algorithm to generate beautiful new colors.



29.7201, 28.2444, 20.1053



49.9661, 46.0555, 28.7740



34.5926, 37.9894, 21.7294



8.2368, 8.4784, 8.4157



14.0351, 9.2758, 1.0507



0.4436, 0.3643, 0.0469

Inverse Universe

The Inverse Universe completely reimagines the original color for something new.



26.1990, 29.5215, 44.8750



42.7054, 48.6665, 79.7796



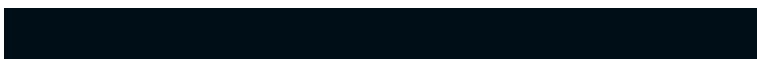
21.8913, 20.9062, 43.4391



7.9856, 8.5707, 10.1861



9.6584, 10.4507, 30.5526



0.3185, 0.3903, 0.8665

Previews

White Background



This preview shows how the XYZ color 29.7194, 28.2431, 20.1047 looks on a white background.

Color Contrast Check

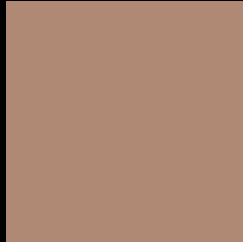
Large Text (above 18pt) WCAG AA ✓ Pass

Any Text WCAG AA × Fail

Large Text (above 18pt) WCAG AAA × Fail

Any Text WCAG AAA × Fail

Black Background



This preview shows how the XYZ color 29.7194, 28.2431, 20.1047 looks on a black background.

Color Contrast Check

Large Text (above 18pt) WCAG AA ✓ Pass

Any Text WCAG AA ✓ Pass

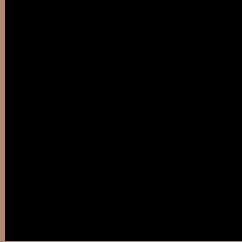
Large Text (above 18pt) WCAG AAA ✓ Pass

Any Text WCAG AAA × Fail

If you want to check with other color combinations, try the [Color Contrast Checker](#).

XYZ 29.7194, 28.2431, 20.1047

Background



This preview shows how black text looks on a background with the XYZ color 29.7194, 28.2431, 20.1047.



This preview shows how white text looks on a background with the XYZ color 29.7194, 28.2431,

Color Blindness Simulation

Color vision deficiency is a very complex topic, and I could not describe the different causes any better than Wikipedia does, so if you want to learn more, you should check out their [article about color blindness](#).

Dichromacy



Original Color

29.7194, 28.2431, 20.1047

Protanopia

26.7816, 28.4527, 21.5331

Deuteranopia

28.6893, 28.1381, 20.1388



Tritanopia

31.7056, 28.2232, 29.7632

Trichromacy



Original Color

29.7194, 28.2431, 20.1047

Protanomaly

27.8433, 28.3354, 21.1413

Deuteranomaly

28.9776, 28.0727, 20.1109

Tritanomaly

30.8902, 28.0908, 25.9843

Monochromacy



Original Color

29.7194, 28.2431, 20.1047

Achromatopsia

27.3213, 28.7441, 31.3023

Achromatomaly

28.1003, 28.5623, 26.9537

CSS Examples

Text

The CSS property to change the color of the text to XYZ 29.7194, 28.2431, 20.1047 is called "color". The color property can be set on classes, ids or directly on the HTML element.

This example shows how text in the color `rgb(175, 137, 115)` looks like.

```
.text, #text, p{  
    color:rgb(175, 137, 115)  
}
```

If you want to add a text shadow in that color use the text-shadow property, you can generate a text shadow directly with our [CSS Text Shadow Generator](#).

Here you see how black text with a 4 pixel rgb(175, 137, 115) colored shadow looks like.

```
.shadow{ text-shadow: 4px 4px 2px rgb(175, 137, 115) }
```

Border

The CSS property to change the border of an element to XYZ 29.7194, 28.2431, 20.1047 is called "border". The border property can be set on classes, ids or directly on the HTML element.

This example shows the color as border, it can be applied via the CSS property "border" or "border-color".

```
.border, #border, table{ border:4px solid rgb(175, 137, 115) }
```


If only the border color should be changed use the property `border-color`.

```
.border{ border-color:rgb(175, 137, 115) }
```

If you want to add a box shadow in that color use:

Here you see how a box with a 4 pixel `rgb(175, 137, 115)` colored shadow looks like.

```
.boxshadow{ -moz-box-shadow:4px 4px 4px  
4px rgb(175, 137, 115); -webkit-box-  
shadow:4px 4px 4px 4px rgb(175, 137, 115);  
box-shadow:4px 4px 4px 4px rgb(175, 137,  
115) }
```

Background

The CSS property to change the background color of an element to XYZ 29.7194, 28.2431, 20.1047 is called "background". The background property can be set on classes, ids or directly on the HTML element.

```
.background, #background, body{  
background: rgb(175, 137, 115) }
```

If only the background color should be changed can be used:

```
.background{ background-color: rgb(175,  
137, 115) }
```

This example shows the color as background, it is applied via the CSS property "background".

To optimize and compress your CSS code, you can use our [online CSS compressor and optimizer](#) based on csstidy. If you want to create a linear or radial gradient as background or border, check our [CSS Gradient Generator](#).

Hey! You found this booklet interesting? Support Converting Colors with the new Membership Option!

The pro membership hides all ads, plus gives you double the colors in the color bucket, and more awesome pro features!

[Learn more, Memberships starting at \\$2.50/m!](#)

**Follow me
on Twitter!**

@ConvertingColor