

Converting Colors

XYZ(29.7132, 20.8463, 28.0551)

Have a look what the booklet for
XYZ(29.7132, 20.8463, 28.0551)
contains.

XYZ(29.7137, 20.8288, 28.0455)	3
<i>Conversions</i>	4
<i>Details</i>	6
<i>Harmonies</i>	12
<i>Previews</i>	24
<i>Color Blindness Simulation</i>	28
<i>CSS Examples</i>	31

Color

**XYZ(29.7137, 20.8288,
28.0455)**

Conversions

Conversions Part 1

Format	Color
Hex	BC5F8E
RGB	188, 95, 142
RGB Percent	74%, 37%, 56%
CMY	0.2627, 0.6274, 0.4431
CMYK	0.00, 0.49, 0.24, 0.26
HSL	330°, 41%, 55%
HSV	330°, 49%, 74%
XYZ	29.7137, 20.8288, 28.0455
YIQ	128.1650, 40.3410, 34.3330

Conversions

Conversions Part 2

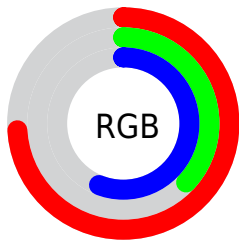
Format	Color
R_{YB}	188, 95, 142
Decimal	12345230
CIE _{Lab}	52.76, 42.96, -8.70
CIE _{LCh}	53, 43.831, 348.555
Yxy	20.8288, 0.3781, 0.2650
Android (android.graphics.Color)	4290535310 (0xFFBC5F8E)
YUV	128.1650, 6.8207, 52.4753
Hunter-Lab	45.6386, 36.3477, -4.4875

Details

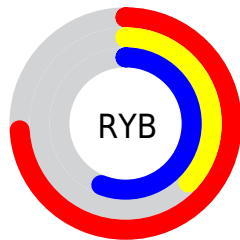
The XYZ color **29.7137, 20.8288, 28.0455** is a dark color, and the websafe version is hex **CC6699**. A complement of this color would be **27.5112, 40.3229, 31.5344**, and the grayscale version is **20.5430, 21.6128, 23.5364**.

A 20% lighter version of the original color is **58.5597, 44.7582, 57.7773**, and **12.3114, 7.4060, 10.9058** is the 20% darker color. If you saturate the color by 10%, you get **27.5507, 17.5738, 24.0223**, and if you desaturate by 10%, it is **32.3448, 24.9263, 32.5126**.

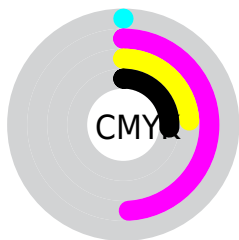
Distribution



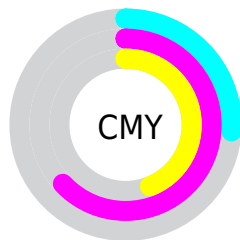
- Red (74%)
- Green (37%)
- Blue (56%)



- Red (74%)
- Yellow (37%)
- Blue (56%)



- Cyan (0%)
- Magenta (49%)
- Yellow (24%)
- Black (26%)



- Cyan (26%)
- Magenta (63%)
- Yellow (44%)

Brightness & Saturation Gradients

These gradients show how the XYZ color 29.7137, 20.8288, 28.0455 changes by changing the brightness by 10 percent. The first figure shows a shift by +10% for each color and the second figure -10%.

Similar to the brightness gradients but the following saturation gradients show a change of the XYZ color 29.7137, 20.8288, 28.0455 by changing the saturation by 10% instead.

■ 29.7137, 20.8288,
28.0455

■ 29.7137, 20.8288,
28.0455

292.5015,
256.3673, 306.6030

■ 19.7684, 12.9989,
18.1206

■ 58.5989, 44.8024,
57.5811

■ 12.3341, 7.4278,
10.8663

■ 78.2694, 61.7150,
78.0288

■ 7.0454, 3.7311,
5.8640

■ 101.9124, 82.4239,
102.8213

■ 3.5371, 1.5243,
2.6951

■ 129.8932,
107.3135, 132.3770

■ 1.4438, 0.3057,
0.9410

162.5771,
136.7682, 167.1145

■ 0.2871, 0.0000,
0.0000

200.3296,

■ 0.0000, 0.0000,

171.1725, 207.4523

0.0000

243.5159,
210.9107, 253.8090

■ 29.7137, 20.8288,
28.0455

■ 29.7137, 20.8288,
28.0455

■ 27.5507, 17.5738,
24.0223

■ 32.3448, 24.9263,
32.5126

■ 25.8227, 15.0980,
20.4243

■ 35.4704, 29.9177,
37.4385

■ 24.4948, 13.3339,
17.2329

■ 39.1172, 35.8538,
42.8388

■ 23.5255, 12.2007,
14.4267

■ 43.3091, 42.7807,
48.7278

■ 22.8385, 11.5486,
11.9723

■ 48.0687, 50.7413,
55.1192

■ 22.8049, 11.5177,
11.8492

■ 53.4172, 59.7763,
62.0259

■ 59.3747, 69.9238,
69.4604

■ 65.9602, 81.2203,
77.4348

■ 70.1847, 87.6856,
84.9581

Harmonies

Analogous

The Analogous color harmony consists of three colors that are next to each other on the color wheel.



27.1377, 20.8288, 43.7355



29.7137, 20.8288, 28.0455



29.3457, 20.8288, 15.5794

Triad

The Triadic color harmony groups three colors that are evenly spaced from another and form a triangle on the color wheel.



29.7137, 20.8288, 28.0455



17.1317, 20.8288, 6.2140



14.5341, 20.8288, 47.2426

Complementary

The Complementary color scheme is a pair of colors which are on the opposite of each other on the color wheel.



29.7137, 20.8288, 28.0455



27.5112, 40.3229, 31.5344

Split Complementary

Split-complementary colors differ from the complementary color scheme. The scheme consists of three colors, the original color and two neighbors of the complement color.



12.5834, 20.8288, 31.6621



29.7137, 20.8288, 28.0455



13.9163, 20.8288, 9.7714

Square

The Square scheme is like the rectangle color scheme, but the four colors are evenly spaced on the color wheel.



29.7137, 20.8288, 28.0455



21.5916, 20.8288, 5.8796



12.3761, 20.8288, 18.0449



18.1050, 20.8288, 57.3460

Rectangle

The Rectangle color scheme consists of four colors that form a rectangle on the color wheel.



29.7137, 20.8288, 28.0455



27.4906, 20.8288, 10.3364



12.3761, 20.8288, 18.0449



13.6923, 20.8288, 42.2469

Sweetspot

The Sweet Spot groups the original color and five complimentary colors.



29.7143, 20.8298, 28.0459



73.9768, 70.0533, 82.0330



23.9771, 17.3876, 49.6694



15.5723, 14.5107, 17.1643



90.7827, 95.5105, 104.0109



18.6292, 19.5994, 21.3438

Same Dimension

The Same Dimension uses a secret algorithm to generate beautiful new colors.



29.7143, 20.8298, 28.0459



49.7564, 31.5926, 43.1922



26.9688, 19.7316, 13.5881



9.7259, 9.6147, 10.9455



15.5644, 7.8569, 8.2656



0.6427, 0.3210, 0.4975

Inverse Universe

The Inverse Universe completely reimagines the original color for something new.



29.7143, 20.8298, 28.0459



49.7564, 31.5926, 43.1922



31.6140, 41.9640, 53.1393



9.7259, 9.6147, 10.9455



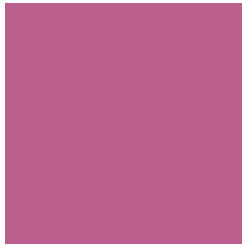
15.5644, 7.8569, 8.2656



0.6427, 0.3210, 0.4975

Previews

White Background



This preview shows how the XYZ color 29.7137, 20.8288, 28.0455 looks on a white background.

Color Contrast Check

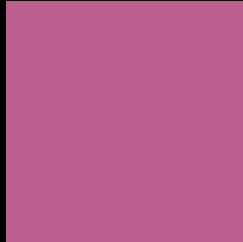
Large Text (above 18pt) WCAG AA ✓ Pass

Any Text WCAG AA ✗ Fail

Large Text (above 18pt) WCAG AAA ✗ Fail

Any Text WCAG AAA ✗ Fail

Black Background



This preview shows how the XYZ color 29.7137, 20.8288, 28.0455 looks on a black background.

Color Contrast Check

Large Text (above 18pt) WCAG AA ✓ Pass

Any Text WCAG AA ✓ Pass

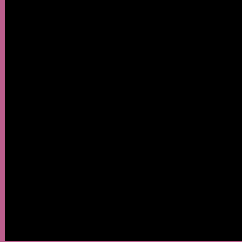
Large Text (above 18pt) WCAG AAA ✓ Pass

Any Text WCAG AAA × Fail

If you want to check with other color combinations, try the [Color Contrast Checker](#).

XYZ 29.7137, 20.8288, 28.0455

Background



This preview shows how black text looks on a background with the XYZ color 29.7137, 20.8288, 28.0455.



This preview shows how white text looks on a background with the XYZ color 29.7137, 20.8288,

Color Blindness Simulation

Color vision deficiency is a very complex topic, and I could not describe the different causes any better than Wikipedia does, so if you want to learn more, you should check out their [article about color blindness](#).

Dichromacy



Original Color

29.7137, 20.8288, 28.0455

Protanopia

21.1913, 21.0578, 37.1301

Deuteranopia

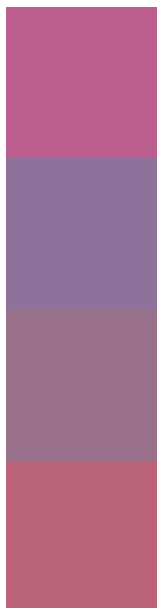
21.4298, 21.0404, 26.5986



Tritanopia

27.5193, 20.9212, 17.0558

Trichromacy



Original Color

29.7137, 20.8288, 28.0455

Protanomaly

23.2614, 20.2408, 33.6912

Deuteranomaly

23.8918, 20.5444, 27.1323

Tritanomaly

28.1627, 20.7433, 20.6087

Monochromacy



Original Color

29.7137, 20.8288, 28.0455

Achromatopsia

20.5175, 21.5861, 23.5072

Achromatomaly

23.0567, 20.6683, 24.9645

CSS Examples

Text

The CSS property to change the color of the text to XYZ 29.7137, 20.8288, 28.0455 is called "color". The color property can be set on classes, ids or directly on the HTML element.

This example shows how text in the color `rgb(188, 95, 142)` looks like.

```
.text, #text, p{  
    color:rgb(188, 95, 142)  
}
```

If you want to add a text shadow in that color use the text-shadow property, you can generate a text shadow directly with our [CSS Text Shadow Generator](#).

Here you see how black text with a 4 pixel rgb(188, 95, 142) colored shadow looks like.

```
.shadow{ text-shadow: 4px 4px 2px rgb(188, 95, 142) }
```

Border

The CSS property to change the border of an element to XYZ 29.7137, 20.8288, 28.0455 is called "border". The border property can be set on classes, ids or directly on the HTML element.

This example shows the color as border, it can be applied via the CSS property "border" or "border-color".

```
.border, #border, table{ border:4px solid rgb(188, 95, 142) }
```


If only the border color should be changed use the property `border-color`.

```
.border{ border-color:rgb(188, 95, 142) }
```

If you want to add a box shadow in that color use:

Here you see how a box with a 4 pixel `rgb(188, 95, 142)` colored shadow looks like.

```
.boxshadow{ -moz-box-shadow:4px 4px 4px  
4px rgb(188, 95, 142); -webkit-box-  
shadow:4px 4px 4px 4px rgb(188, 95, 142);  
box-shadow:4px 4px 4px 4px rgb(188, 95,  
142) }
```

Background

The CSS property to change the background color of an element to XYZ 29.7137, 20.8288, 28.0455 is called "background". The background property can be set on classes, ids or directly on the HTML element.

```
.background, #background, body{  
background: rgb(188, 95, 142) }
```

If only the background color should be changed can be used:

```
.background{ background-color: rgb(188, 95,  
142) }
```

This example shows the color as background, it is applied via the CSS property "background".

To optimize and compress your CSS code, you can use our [online CSS compressor and optimizer](#) based on csstidy. If you want to create a linear or radial gradient as background or border, check our [CSS Gradient Generator](#).

Hey! You found this booklet interesting? Support Converting Colors with the new Membership Option!

The pro membership hides all ads, plus gives you double the colors in the color bucket, and more awesome pro features!

[Learn more, Memberships starting at \\$2.50/m!](#)

**Follow me
on Twitter!**

@ConvertingColor