

Converting Colors

XYZ(29.7174, 27.6386, 25.5988)

Have a look what the booklet for
XYZ(29.7174, 27.6386, 25.5988)
contains.

XYZ(29.8421, 27.7645, 25.6160)	3
<i>Conversions</i>	4
<i>Details</i>	6
<i>Harmonies</i>	12
<i>Previews</i>	24
<i>Color Blindness Simulation</i>	28
<i>CSS Examples</i>	31

Color

**XYZ(29.8421, 27.7645,
25.6160)**

Conversions

Conversions Part 1

Format	Color
Hex	AC8784
RGB	172, 135, 132
RGB Percent	67%, 53%, 52%
CMY	0.3255, 0.4706, 0.4823
CMYK	0.00, 0.22, 0.23, 0.33
HSL	5°, 19%, 60%
HSV	5°, 23%, 67%
XYZ	29.8421, 27.7645, 25.6160
YIQ	145.7210, 23.0150, 6.9110

Conversions

Conversions Part 2

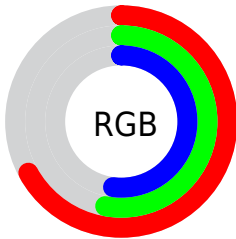
Format	Color
R_{YB}	172, 135, 132
Decimal	11306884
CIE _{Lab}	59.68, 13.65, 7.01
CIE _{LCh}	60, 15.342, 27.184
Yxy	27.7645, 0.3586, 0.3336
Android (android.graphics.Color)	4289496964 (0xFFAC8784)
YUV	145.7210, -6.7645, 23.0467
Hunter-Lab	52.6920, 8.8823, 8.0608

Details

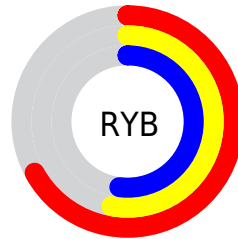
The XYZ color **29.8421, 27.7645, 25.6160** is a dark color, and the websafe version is hex **CC9999**. A complement of this color would be **31.1498, 36.2592, 44.3870**, and the grayscale version is **27.2282, 28.6462, 31.1957**.

A 20% lighter version of the original color is **58.7351, 55.9632, 53.6052**, and **12.4176, 11.0435, 9.6607** is the 20% darker color. If you saturate the color by 10%, you get **26.7046, 23.2203, 19.2341**, and if you desaturate by 10%, it is **33.5068, 33.0522, 33.1317**.

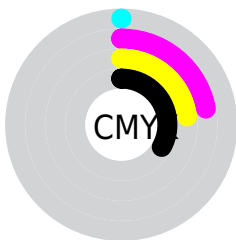
Distribution



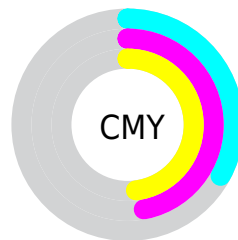
- Red (67%)
- Green (53%)
- Blue (52%)



- Red (67%)
- Yellow (53%)
- Blue (52%)



- Cyan (0%)
- Magenta (22%)
- Yellow (23%)
- Black (33%)



- Cyan (33%)
- Magenta (47%)
- Yellow (48%)

Brightness & Saturation Gradients

These gradients show how the XYZ color 29.8421, 27.7645, 25.6160 changes by changing the brightness by 10 percent. The first figure shows a shift by +10% for each color and the second figure -10%.

Similar to the brightness gradients but the following saturation gradients show a change of the XYZ color 29.8421, 27.7645, 25.6160 by changing the saturation by 10% instead.

■ 29.8421, 27.7645,
25.6160

■ 29.8421, 27.7645,
25.6160

293.0908,
291.3399, 294.4372

■ 19.8662, 18.1482,
16.3134

■ 58.8007, 56.1082,
53.6313

■ 12.4056, 11.0564,
9.5894

■ 78.5142, 75.6045,
73.1810

■ 7.0947, 6.1048,
5.0256

■ 102.2043, 99.1628,
96.9836

■ 3.5682, 2.9089,
2.2033

130.2363,
127.1677, 125.4574

■ 1.4609, 1.0844,
0.6763

162.9756,
160.0034, 159.0212

■ 0.2990, 0.0000,
0.0000

200.7875,

■ 0.0000, 0.0000,

198.0544, 198.0934

0.0000

244.0375,
241.7051, 243.0925

■ 29.8421, 27.7645,
25.6160

■ 29.8421, 27.7645,
25.6160

■ 26.7046, 23.2203,
19.2341

■ 33.5068, 33.0522,
33.1317

■ 24.0680, 19.3827,
13.9294

■ 37.7192, 39.1107,
41.8307

■ 21.9070, 16.2173,
9.6429

■ 42.5012, 45.9705,
51.7616

■ 20.1930, 13.6854,
6.3094

■ 47.8730, 53.6593,
62.9699

■ 18.8947, 11.7443,
3.8559

■ 53.8538, 62.2035,
75.4986

■ 17.9765, 10.3460,
2.1990

■ 60.4618, 71.6284,
89.3888

■ 17.3967, 9.4350,
1.2394

■ 67.7146, 81.9582,
104.6799

■ 17.1562, 9.0564,
0.8438

■ 70.8234, 87.5107,
107.7662

Harmonies

Analogous

The Analogous color harmony consists of three colors that are next to each other on the color wheel.



30.2858, 27.7645, 30.7578



29.8421, 27.7645, 25.6160



28.4591, 27.7645, 22.1251

Triad

The Triadic color harmony groups three colors that are evenly spaced from another and form a triangle on the color wheel.



29.8421, 27.7645, 25.6160



23.3821, 27.7645, 24.8120



26.2068, 27.7645, 42.1818

Complementary

The Complementary color scheme is a pair of colors which are on the opposite of each other on the color wheel.



29.8421, 27.7645, 25.6160



31.1498, 36.2592, 44.3870

Split Complementary

Split-complementary colors differ from the complementary color scheme. The scheme consists of three colors, the original color and two neighbors of the complement color.



24.4224, 27.7645, 40.1078



29.8421, 27.7645, 25.6160



22.8422, 27.7645, 29.7099

Square

The Square scheme is like the rectangle color scheme, but the four colors are evenly spaced on the color wheel.



29.8421, 27.7645, 25.6160



24.7245, 27.7645, 21.7024



23.2137, 27.7645, 35.3691



28.1272, 27.7645, 40.7437

Rectangle

The Rectangle color scheme consists of four colors that form a rectangle on the color wheel.



29.8421, 27.7645, 25.6160



27.2239, 27.7645, 20.9792



23.2137, 27.7645, 35.3691



25.5720, 27.7645, 41.8669

Sweetspot

The Sweet Spot groups the original color and five complimentary colors.



29.8429, 27.7658, 25.6166



65.3500, 66.5292, 69.5190



32.4576, 28.1506, 41.4236



14.1071, 14.3217, 14.9118



82.5889, 86.8899, 94.6231



15.4596, 16.2647, 17.7123

Same Dimension

The Same Dimension uses a secret algorithm to generate beautiful new colors.



29.8429, 27.7658, 25.6166



51.0360, 45.8809, 40.1474



32.8444, 33.7688, 26.6171



8.0518, 8.1084, 8.3541



12.7837, 6.7730, 0.6335



0.3709, 0.2190, 0.0227

Inverse Universe

The Inverse Universe completely reimagines the original color for something new.



31.1498, 36.2592, 44.3870



53.8315, 64.0597, 80.3333



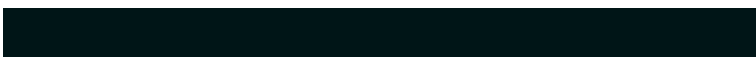
27.7627, 29.4850, 43.2579



8.1841, 8.9676, 10.2523



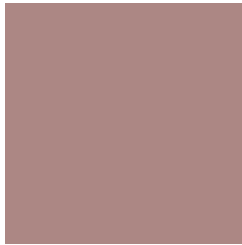
14.7963, 20.7265, 32.2653



0.4265, 0.6064, 0.9025

Previews

White Background



This preview shows how the XYZ color 29.8421, 27.7645, 25.6160 looks on a white background.

Color Contrast Check

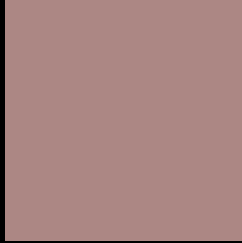
Large Text (above 18pt) WCAG AA ✓ Pass

Any Text WCAG AA ✗ Fail

Large Text (above 18pt) WCAG AAA ✗ Fail

Any Text WCAG AAA ✗ Fail

Black Background



This preview shows how the XYZ color 29.8421, 27.7645, 25.6160 looks on a black background.

Color Contrast Check

Large Text (above 18pt) WCAG AA ✓ Pass

Any Text WCAG AA ✓ Pass

Large Text (above 18pt) WCAG AAA ✓ Pass

Any Text WCAG AAA × Fail

If you want to check with other color combinations, try the [Color Contrast Checker](#).

XYZ 29.8421, 27.7645, 25.6160

Background



This preview shows how black text looks on a background with the XYZ color 29.8421, 27.7645, 25.6160.



This preview shows how white text looks on a background with the XYZ color 29.8421, 27.7645,

25.6160.

Color Blindness Simulation

Color vision deficiency is a very complex topic, and I could not describe the different causes any better than Wikipedia does, so if you want to learn more, you should check out their [article about color blindness](#).

Dichromacy



Original Color

29.8421, 27.7645, 25.6160

Protanopia

26.5506, 27.7470, 27.6232

Deuteranopia

28.4336, 27.8905, 25.3575



Tritanopia

30.6552, 27.6729, 30.1113

Trichromacy



Original Color

29.8421, 27.7645, 25.6160

Protanomaly

27.6559, 27.6735, 26.8056

Deuteranomaly

28.9111, 27.9226, 25.3386

Tritanomaly

30.4923, 27.8279, 28.5751

Monochromacy



Original Color

29.8421, 27.7645, 25.6160

Achromatopsia

27.3213, 28.7441, 31.3023

Achromatomaly

27.9983, 28.2377, 29.1740

CSS Examples

Text

The CSS property to change the color of the text to XYZ 29.8421, 27.7645, 25.6160 is called "color". The color property can be set on classes, ids or directly on the HTML element.

This example shows how text in the color `rgb(172, 135, 132)` looks like.

```
.text, #text, p{  
    color:rgb(172, 135, 132)  
}
```

If you want to add a text shadow in that color use the text-shadow property, you can generate a text shadow directly with our [CSS Text Shadow Generator](#).

Here you see how black text with a 4 pixel rgb(172, 135, 132) colored shadow looks like.

```
.shadow{ text-shadow: 4px 4px 2px rgb(172, 135, 132) }
```

Border

The CSS property to change the border of an element to XYZ 29.8421, 27.7645, 25.6160 is called "border". The border property can be set on classes, ids or directly on the HTML element.

This example shows the color as border, it can be applied via the CSS property "border" or "border-color".

```
.border, #border, table{ border:4px solid rgb(172, 135, 132) }
```


If only the border color should be changed use the property `border-color`.

```
.border{ border-color:rgb(172, 135, 132) }
```

If you want to add a box shadow in that color use:

Here you see how a box with a 4 pixel `rgb(172, 135, 132)` colored shadow looks like.

```
.boxshadow{ -moz-box-shadow:4px 4px 4px  
4px rgb(172, 135, 132); -webkit-box-  
shadow:4px 4px 4px 4px rgb(172, 135, 132);  
box-shadow:4px 4px 4px 4px rgb(172, 135,  
132) }
```

Background

The CSS property to change the background color of an element to XYZ 29.8421, 27.7645, 25.6160 is called "background". The background property can be set on classes, ids or directly on the HTML element.

```
.background, #background, body{  
background: rgb(172, 135, 132) }
```

If only the background color should be changed can be used:

```
.background{ background-color: rgb(172,  
135, 132) }
```

This example shows the color as background, it is applied via the CSS property "background".

To optimize and compress your CSS code, you can use our [online CSS compressor and optimizer](#) based on csstidy. If you want to create a linear or radial gradient as background or border, check our [CSS Gradient Generator](#).

Hey! You found this booklet interesting? Support Converting Colors with the new Membership Option!

The pro membership hides all ads, plus gives you double the colors in the color bucket, and more awesome pro features!

[Learn more, Memberships starting at \\$2.50/m!](#)

**Follow me
on Twitter!**

@ConvertingColor